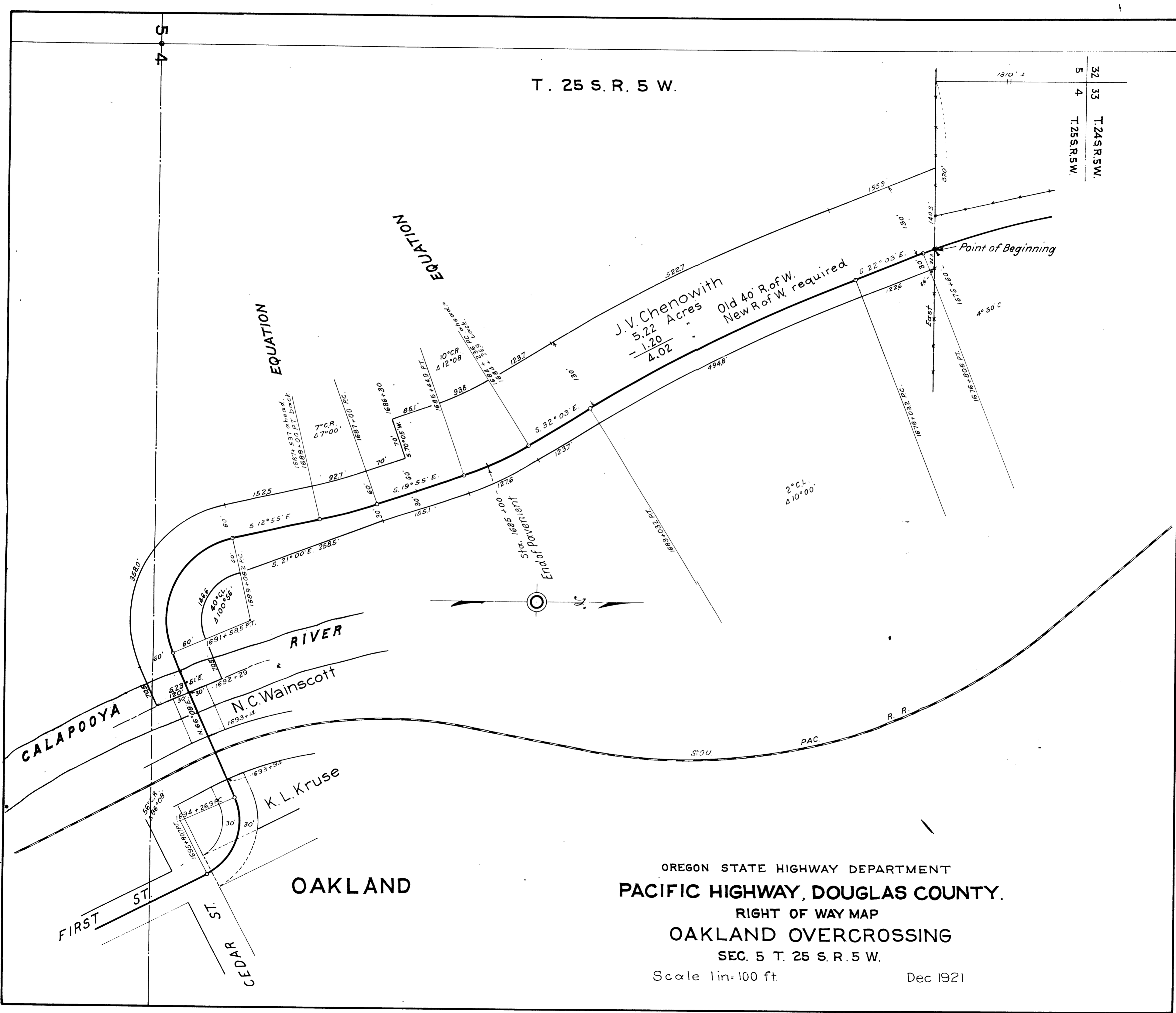


T. 25 S. R. 5 W.

32	T. 24 S. R. 5 W.
5	T. 25 S. R. 5 W.
4	



OREGON STATE HIGHWAY DEPARTMENT
PACIFIC HIGHWAY, DOUGLAS COUNTY.
 RIGHT OF WAY MAP
OAKLAND OVERCROSSING
 SEC. 5 T. 25 S. R. 5 W.

Scale 1 in = 100 ft. Dec. 1921