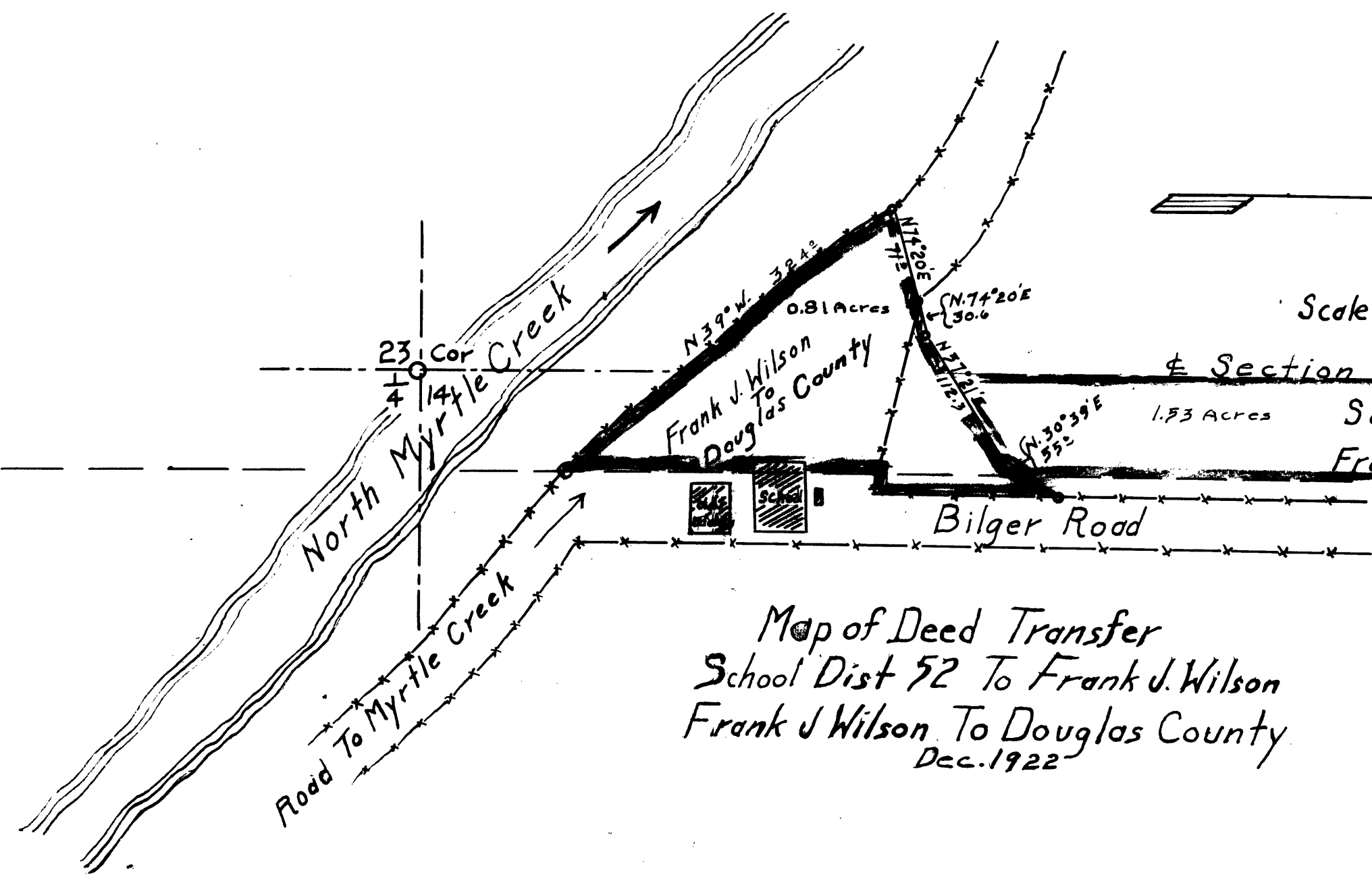


Cor. Henry Jones D.L.C. 48

North 993'



Scale 1"=100'

Section North 910°  
 School Dist. No. 52  
 To Frank J. Wilson Lot 3 Sec. 14  
 South 850°

East 772

Map of Deed Transfer  
 School Dist 52 To Frank J. Wilson  
 Frank J. Wilson To Douglas County  
 Dec. 1922