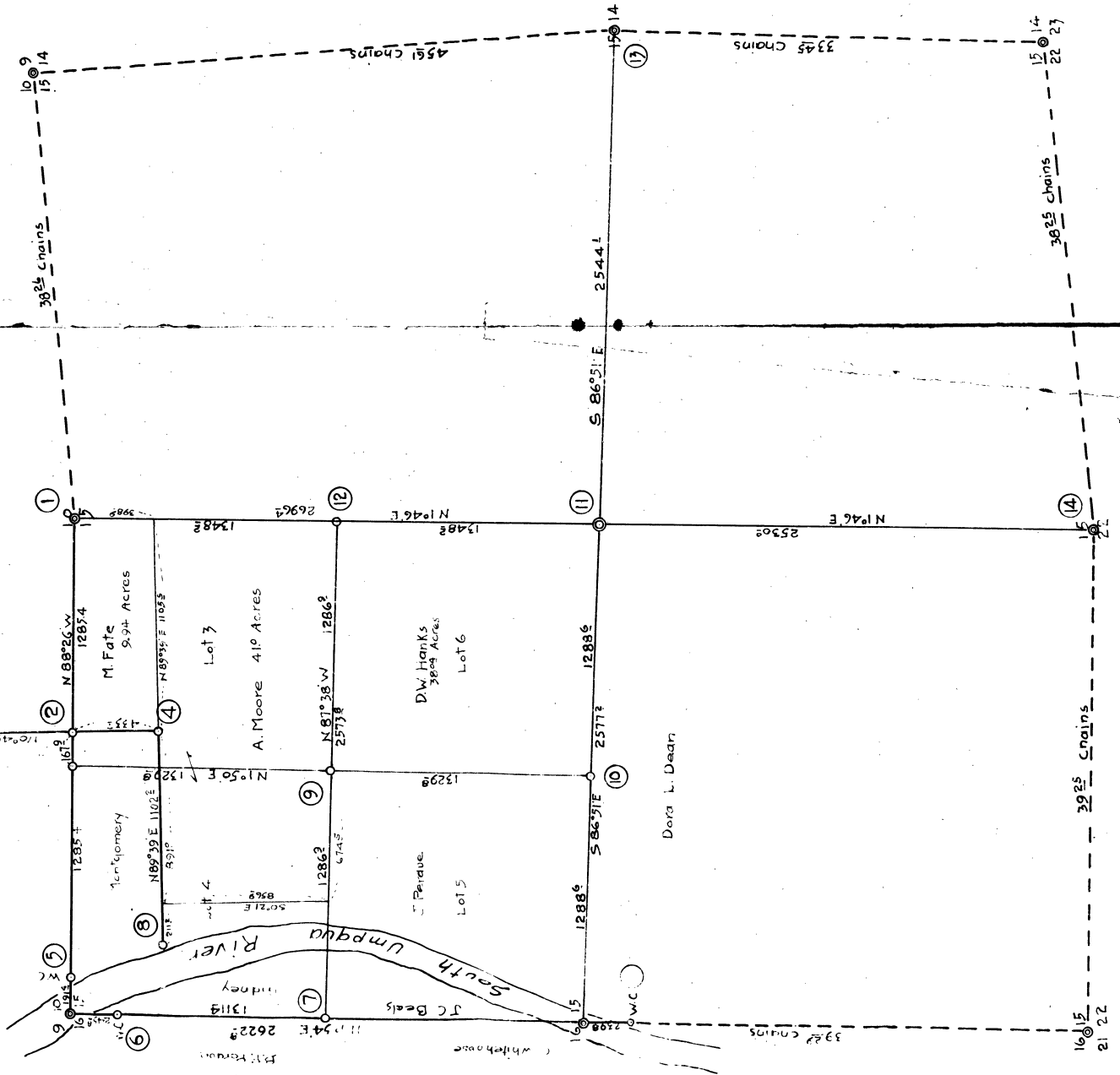


Andrew Thomas
D.L.C. # 48

Geo. T. Day
D.L.C. # 47



Description of Corners

Corner	Marked by	Witness	Traces
1/4	Pipe	20' W.O. N16 1/4 W	36 1/2 ft
		15' B.O. S19 W	39 1/2
2	Claim & Section	4' Pine N7 1/2 E	61 1/2
3	SW 1/4 48	20' W.O. N18 E	98 1/2
		B. Rock N18 W	21 1/2
4	SE 1/4 47	14' W.O. S7 1/2 E	22 1/2
5	WC 19 1/2 ft of Sec. 48	6' B.O. S31 W	18 1/2
6	WC 24 1/2 ft of Sec. 48	6' W.O. S39 E	43 1/2
	Rock	18' B.O. S33 E	26 1/2
7	1/16	16' Y. Pine N7 1/2 E	54 1/2
8	WC 1/4 47	8' Fir S12 E	18 1/2
		18' L. wood (O.B.T.)	21 1/2
9	Cont. NW 1/4	18' Fir S87 1/2 E	81 1/2
10	1/16 Cor	16' Fir N12 1/2 E	107 1/2
11	1/4	12' Fir S28 E	45 1/2
		48' " N38 W	36 1/2
12	1/16	12' Fir S60 E	59 1/2
		12' " N18 1/2 W	37 1/2
13	1/4	18' B.O. N56 W	41 1/2
		12' W.O. N86 E	66 1/2
14	1/4	14' W.O. N114 1/2 W	72 1/2
		Boulder S13 W	70 1/2

Subdivision of NW 1/4 of
Sec. 15 T. 30S. R. 4W
Douglas Co. Ore.

Surveyed Dec. 29 1922
By G. G. Stewart, Deputy Co. Sur.
Licensed Engineer No. 12,550

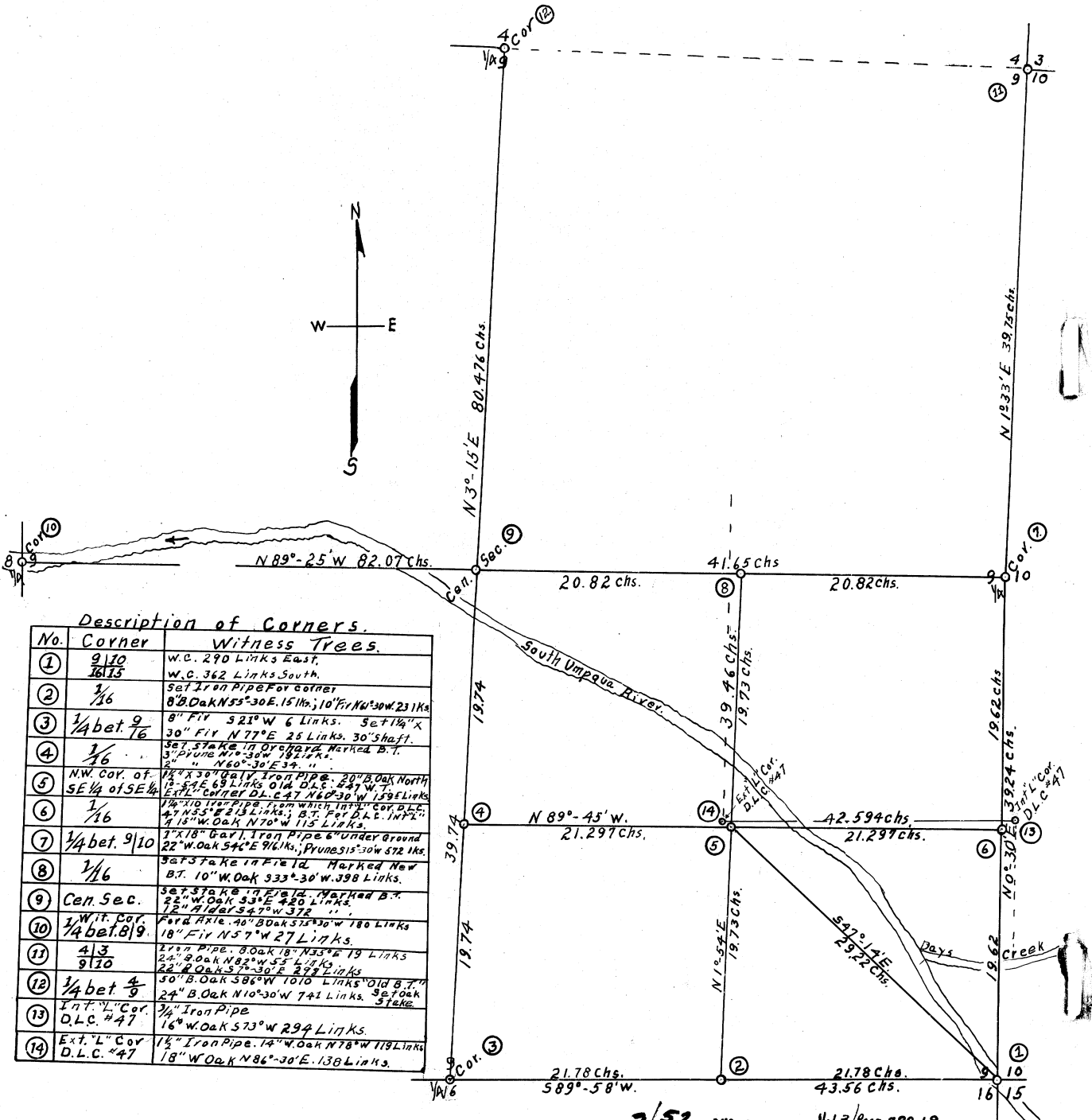
Variation 21° 05' E Bearings Magnetic
Scale 1 inch = 500 ft

5/1/22

COUNTY SURVEYORS FILE DATA
DO NOT REMOVE FROM OFFICE

GREAT BRITAIN

MAP SHOWING
Subdivision of SE 1/4 of SE 1/4 of Sec. 9
T. 30 S. R. 4 W. Wil. Mer.
FOR
Summer and Montgomery
H.L. Eppstein County Surveyor.
Dec. 5, 1928. Scale 1 in. =
Bearing True. Var. 20°-21' E.



Description of Corners.

No.	Corner	Witness Trees
1	9/10 16/15	W.C. 270 Links East, W.C. 362 Links South.
2	1/16	Set Iron Pipe for corner 8" B. Oak N 55° 30' E. 151 Lks.; 10" Fir N 6° 30' W. 231 Lks.
3	1/4 bet. 9/16	8" Fir S 21° W 6 Links. Set 1 1/4" x 30" Fir N 77° E 25 Links. 30" shaft.
4	1/16	Set stake in orchard marked B.T. 3" Pine N 7° 30' W 181 Lks. 2" " N 60° 30' E 32 "
5	N.W. Cor. of SE 1/4 of SE 1/4	1 1/4" x 30" Galv. Iron Pipe. 20" B. Oak North 12" S 4 E 69 Links Old D.L.C. #47 W. 7 Links Ext. Corner D.L.C. #47 N 67° 30' W 159 Links
6	1/16	1 1/4" x 10" Iron Pipe from which Int'l. Cor. D.L.C. #47 N 35° E 213 Links; B.T. Fir D.L.C. Int'l. 1 1/2" W. Oak N 70° W 115 Links.
7	1/4 bet. 9/10	2 1/2" x 18" Galv. Iron Pipe 6" Under Ground 22" W. Oak S 4° E 96 Lks.; Pine S 15° 30' W 572 Lks.
8	1/16	Set stake in field marked New B.T. 10" W. Oak S 33° 30' W 398 Links.
9	Cor. Sec.	Set stake in field marked B.T. 22" W. Oak S 3° E 420 Links. 12" B. Oak S 47° W 572 "
10	Int'l. Cor. 1/4 bet. 8/9	Feet. Arle. 40" B. Oak S 30° W 180 Links 18" Fir N 57° W 27 Links.
11	4/3 9/10	1 1/2" Pipe. 8" Oak N 35° E 19 Links 24" B. Oak N 82° W 53 Links 22" B. Oak S 7° E 272 Links
12	1/4 bet. 4/9	50" B. Oak S 86° W 1010 Links Old B.T. 24" B. Oak N 10° 30' W 741 Links. Set oak stake
13	Int'l. Cor. D.L.C. #47	3/4" Iron Pipe 16" W. Oak S 73° W 294 Links.
14	Ext. "L" Cor. D.L.C. #47	1 1/2" Iron Pipe. 14" W. Oak N 78° W 118 Links 18" W. Oak N 86° 30' E. 138 Links.

C. S. File No. 7/52

Summary of the surveying

Δ 2

Δ 1

1.53

North

Corner

Cor

116.4

Δ 1

13 132°

129.4

W corner south

Δ 2

37.4 to far west

162.5

over River

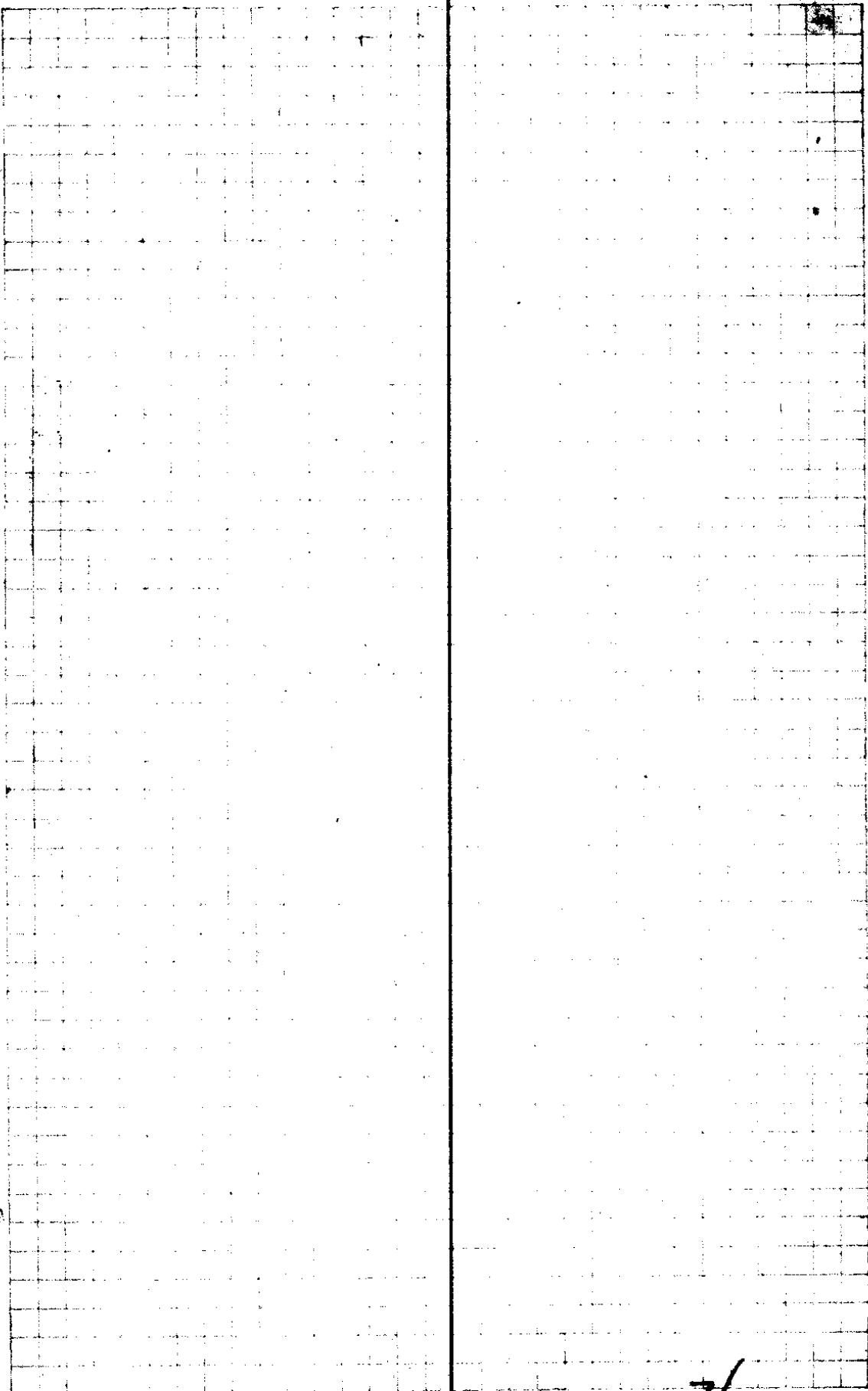
Δ 1

13 189°

184.1

W corner

East as section corner.



C. S. File No. 7/52

3

Sum & Quantity

	$\Delta 12$				
-17-30	118	1125	41.589		
	$\Delta 11$				
-1-15	311	3.109	40.129	Summ H.	
	$\Delta 10$				
+9°	115	1136	37.320	Summ H.	
	$\Delta 9$				
-1-30	261	2.809	36.184		
	$\Delta 8$				
+11°	297	4.879	33.375		
	$\Delta 7$				
+19°	232°	2.19.8	28.494		
	$\Delta 6$				
15°	197	1.903	26.298		
	$\Delta 5$			Foot Hill	
12	2089	2.089	24.315		
	$\Delta 4$				
		499	22.306		
	$\Delta 3$				
		14035	17.316		
	$\Delta 2$				
		83	3.281		
	$\Delta 1$				
8°	2475	2.451	2.451		West 58°9-22W
CON 9-10					
15-16					

Move 24 E of Back 496 link $\frac{1}{6}$ cor.
North, 225 links

0 1/2
5 1/2
7 1/2
10 1/2

C. S. File No.

7/52

Cor 1/4 4 *Sumner & Montgomery*

9051R

Δ24A set back on line 8375K Fall 5818 the West of Corner

Δ24

Triangulation

49.76

88.727

80.352 to Δ24A

Δ22

Triangulation 5.591

38.967

Δ21

11.92

33.376

Δ20

1.34

21.46

move 20 150 East

21.456

Δ19

2.300
5.000

2.65
4.995
5.00
8.35
15.995

15.995

20.12

move 19 145 East

20.116

Δ18

1.70

9.12
1.31
11.92
33.375

4.121

Δ17

20° 18'

1.701

2.421

Δ16

.72

.72

N 0°-54' W

1/4 Cor

45 lbs

89°-44' North

14

.063

43.673

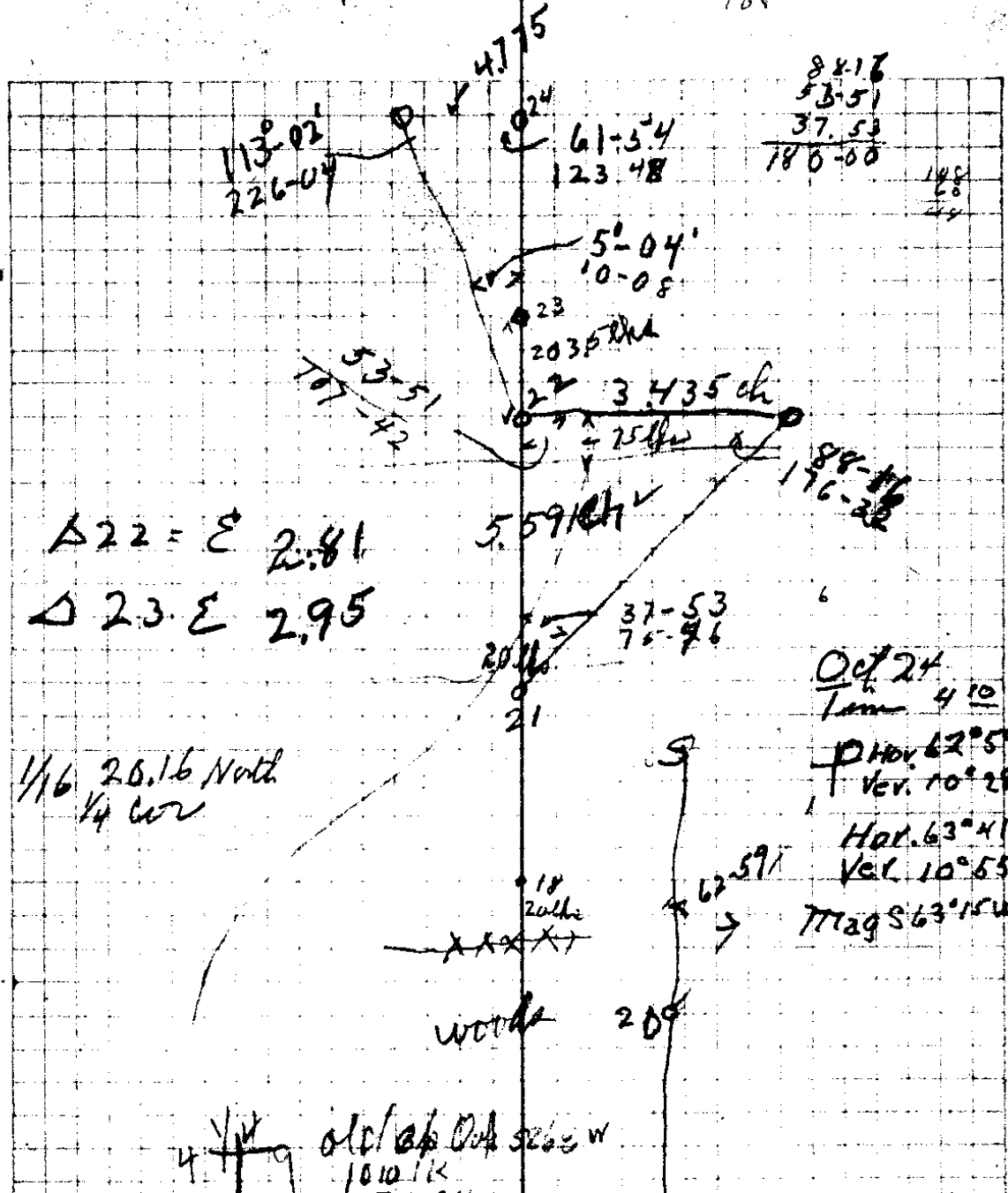
Δ13

21-30 2.145

1.996

43.560

west 589-22 W



$\Delta 22 = E \ 2.81$
 $\Delta 23 = E \ 2.95$

$1/16 \ 20.16 \ North$
 $1/4 \ NW$

Oct 24
 Tem 4 10
 PHOV $62^{\circ}59'$
 Ver. $10^{\circ}28'$
 Hat. $63^{\circ}41'$
 Ver. $10^{\circ}55'$
 Mag S $63^{\circ}15'W$

18
 20
 XXXX

woods 204

4 $1/4$ old B.P. Oct 5263 W
 1010.1K
 New B.O. 24
 N $10^{\circ}30'W$ 74' the 210

true

Fill 45 south of corner

Found Old B.T.
 Set $1/4$ S. shaft 3' long
 Marked New B.T.
 16 9 8" Fair 5 21 W 6 1/2
 30" 4" N 77 1/2 15 1/2

true

C.S. File No. 7/52

5

Sumner & Montgomery

To 1/4 Cor

on section
Δ 11 279.6

93-27 R

82.526

Δ 10 .395

2.03

82.13°

Δ 9

647

80.10

Δ 8

13.53

73.631

Δ 7

3.78

60.101

Δ 6

8-10
368

15.00
3.659
18.659

56.321

Δ 5

407

37.662

Δ 4 Pond
Dunn

3.16 40
2.98

3.121 2.22
2.49 2.978
1.505

12.359 } 38.592

Δ 3

3.51
8.925

12.435

21.233

Δ 2

3.51

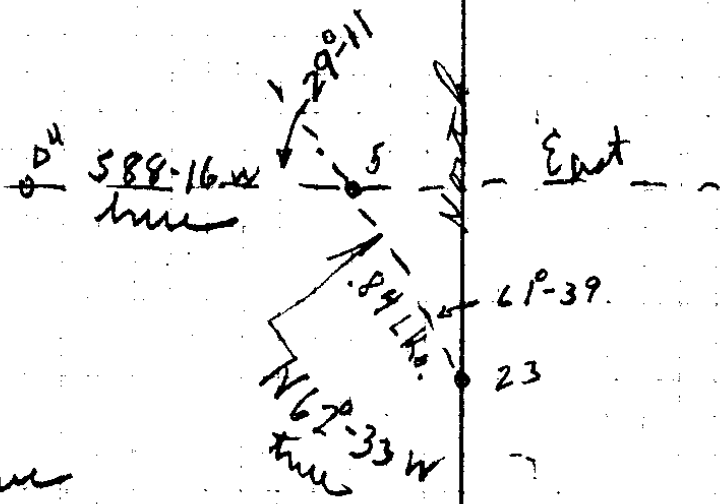
8.798

Δ 1

5288

Cont N88-16E

10 14 869



move
 #5 South 1.16 lb
 North $\frac{13}{103}$

move #6 South 1.73
 North $\frac{20}{1.53}$

move #7 South 2.05
 North $\frac{22}{1.83}$

Ed W
 1/2 Sec

6

Summer of 91 out going

Δ12

20 4555

4.552 26.041

mom S 1.88
E. 3.35

Δ11

8-45 2653

262.2 21.489

Δ10

1.55 5L 18.567

Δ9

70 ⁶⁹⁷ 17.317 10R

Δ8

70 ¹⁹⁷ 5° L 16.620

Δ7

14.55 15.923

Δ6

2.69 14.468

Δ5

1.059 11.778

Δ4

4.71 10.719

Δ3

1.36 6.009

Δ2

06-15 2108

3.119 4.649

Δ1

1.53 1.53

North NO-40W

House
Rogers

Garage

Cor
D.W.C. 47 SE.

chick

311

Montgomery
N 46° 20' E 205 ft
N 78° 1' E 123-30'

Road
10

Quays Creek

-x-x-2 270

school

Home

804 feet

school

xxx 20 feet

school

xxxx 30

xxxx 45 mont House

school

xxxx

C.S. File No. 7/53

7

Summer to Montgomery

over

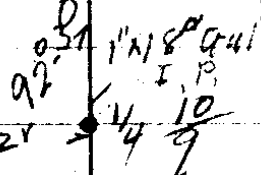
14

N 3 E

2.78

90°

.321



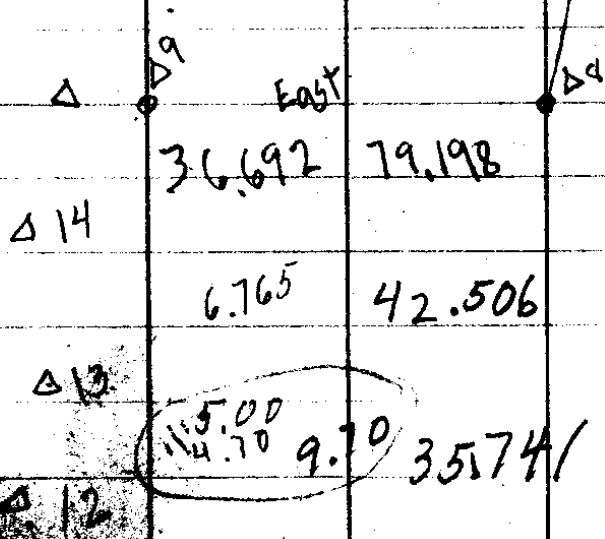
WOAK S46E 916.1Ks

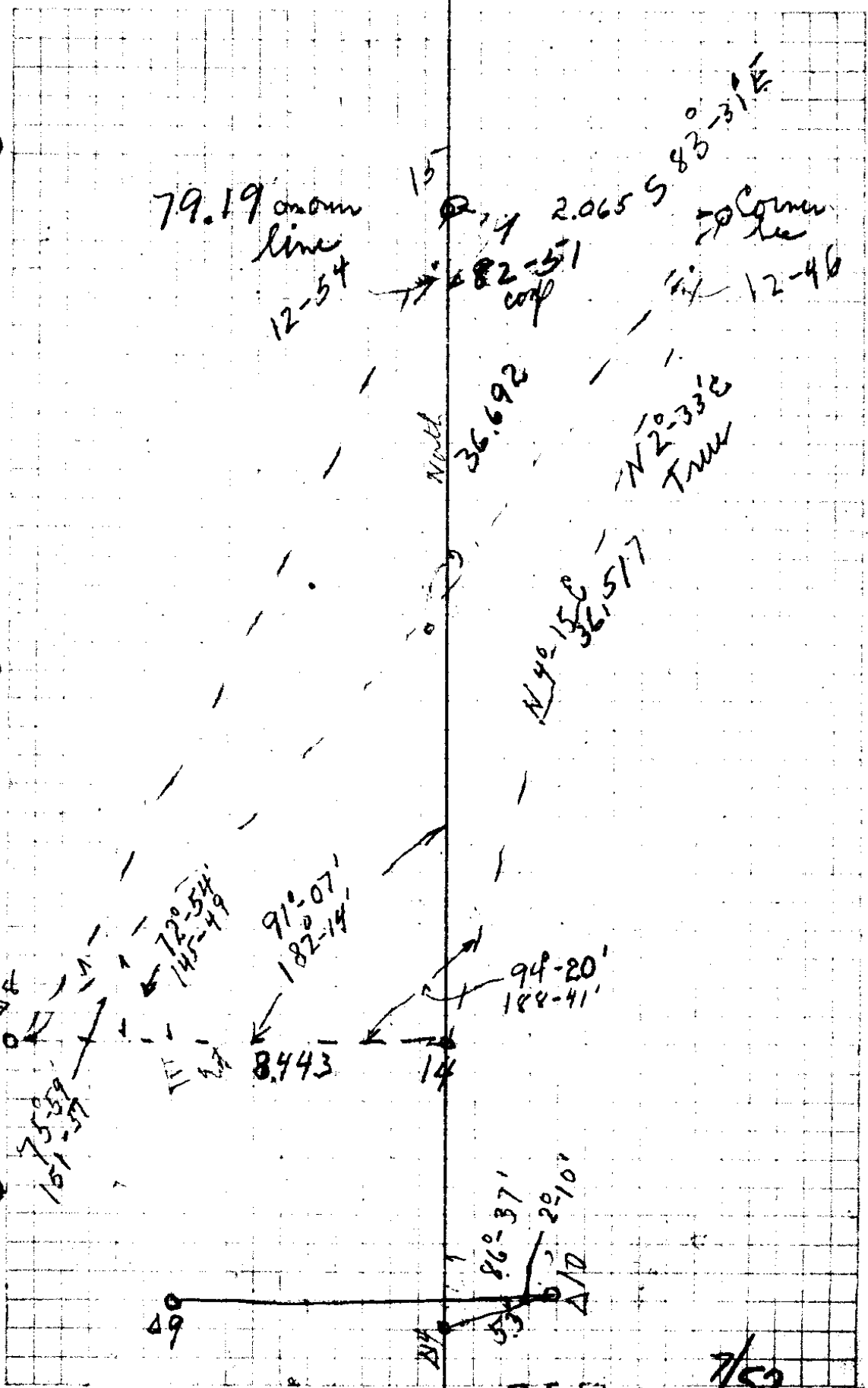
Pine Tree, S15-30W 572.1Ks

Lat $42^{\circ}58'$
 Ver 33-59-30

Oct 26
 Time 12-35
 Hor 101°52
 Ver 33°56
 Hor. 102°49
 Ver. 34°03

Mag S13°30W





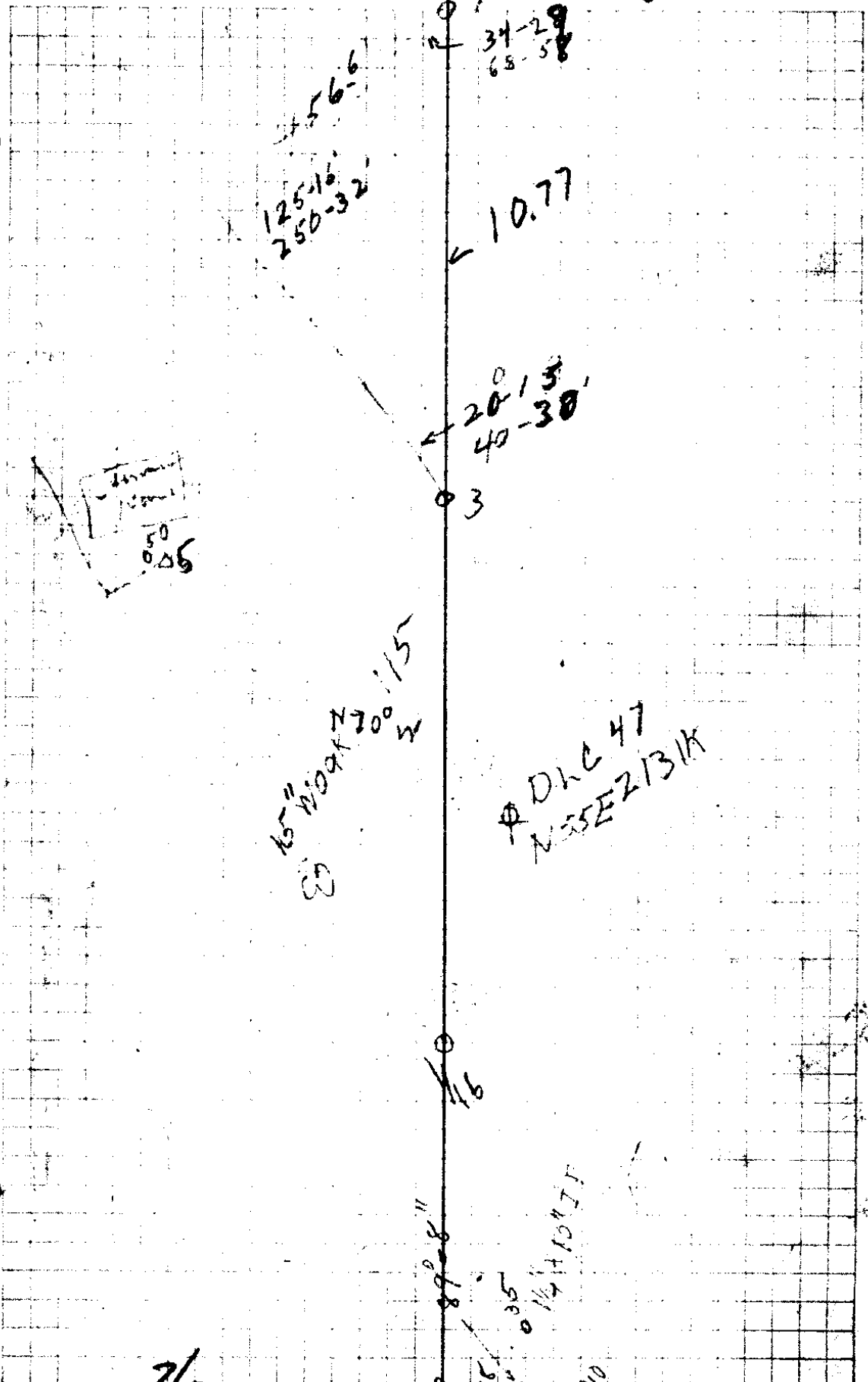
C. S. File No.

7/52

8 Summer to Montgomery

1/16	1.743	Fell South	94-47	N5E	N4-59E
Δ 11	.80	18.835	42.23		
Δ 10	5.25		41.432		
Δ 9	4.86		36.182		
Δ 8	5.675		31.322		
Δ 7	2.25		25.649		89-48W
Δ 6	.35		90W	South	
Δ 5	5.37			23.397	more E=North .77
Δ 4	10.77			18.027	more N=North .59
Transducer Δ 3	2.900			7.257	
Δ 2 3-30 4-15	4.007			4.357	
Δ 1	.350				
1/16					N89-48W

Summer of 1947



04
34-29
68-58

456-6
125-16
250-32

10.77

20 13
40-30

3

50
0.26

165 W 094 N 70 W

DLC 47
N 55 E 2131 K

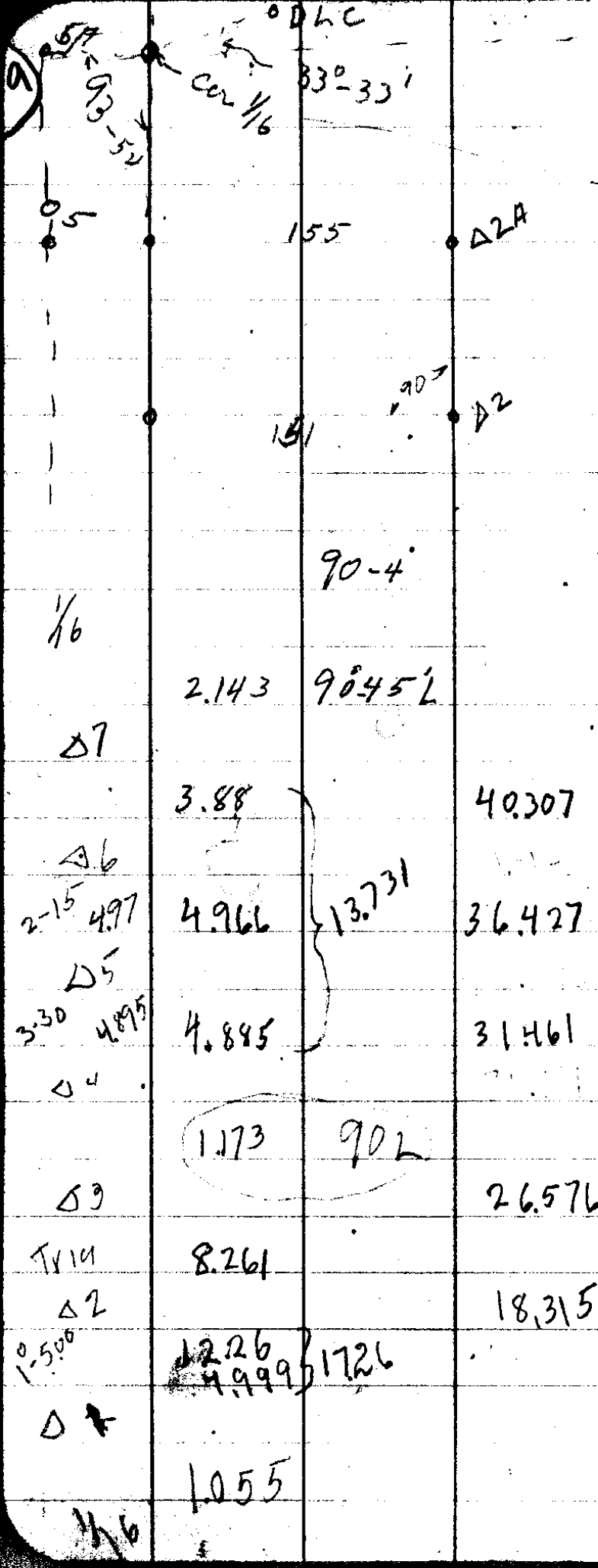
16

18

186
0.35

1/4 A 10 N 11

010



04 Ed W 5 A Back 51
N & S 2 A. 1555

04
NEW COR
SE 1/4 85 E 1/4

1/2" x 12" Bolt
20W 0 N 3-30W 121
CANDW 49 N 59-30E 107
30" W 0 N 79-15E 233

N 89-30W 589-13W

N 0-02W

589-58W

North N 0-02W

40.41 ~~9~~ MOVE #2 West 1.51
 " 2A ~~1.44~~ 1.558
 2A = 529 h/b North

40-58
 22-16
 63-14
 116-46

40-58
 81-36

4.7.73

Δ3
 116-46
 233-32

22-16
 44-32

Δ2

1/6 South

8 B.O. N55-30E 15 h
 10' FIX. N61-30W 23 h

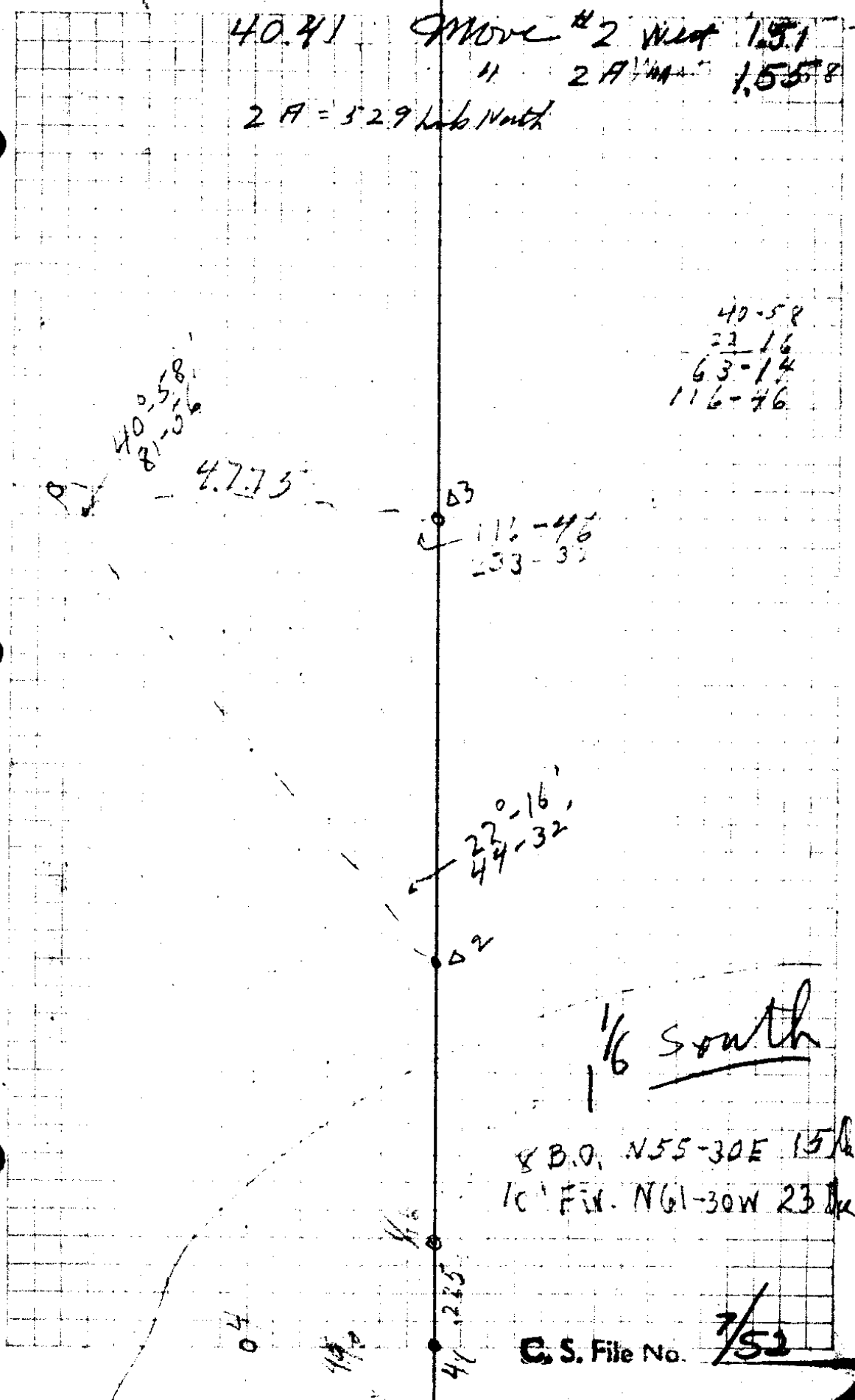
C.S. File No. 7/52

41-225

40

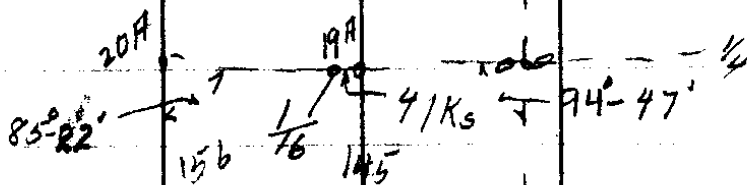
41

46



10

Summer of Montgomery



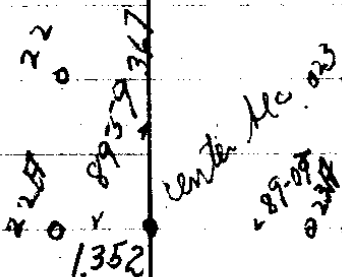
26

19

5A

103

55



22" W Oak 53-E 420

12" AIDER 547W 3.72

center section

N side
1/16 of SE 1/4

10" W Oak 518-30E 344

tree

44-27

6A

153

6

West
2 | 40.32
20.16

47

North
2 | 40.47
20.23
41.33
61.56
60.10
1.46 East of line?

3' PYRRE N1-30W 191K
2" " N60-30E 34 "

+ $\frac{1}{16}$ on $\frac{1}{2}$ sec
line $\frac{1}{4}$ North of
South $\frac{1}{4}$ cor.

4 1/2 W. A. Racker

5 H. H. "

5 Reiteration

5+2

approximate

11

Summer of Montgomery

Fall 19 th N.E. Corner			
Δ 6 2-70	4.82	4.81	30.52
Δ 5 5-30	4.48	4.47	25.71
Δ 4	Bank River	Put in a	□ 1" x 10" Bolt
	.88	21.24	13 lbs
Δ 3	in road,	11.51	20.36
Δ 2		5.27	8.85
Δ 1		3.58	W 5 lbs
1/16"	NW Cor	SE 1/4	W 5 lbs
			547-30E

12

Sumner Montgomery

Moved 7 A East 1.14 to 1/16 corner
 north side of SE 1/4 B.T. Bear S33-30W
 398 links 10" W 00R

Moved #2 N25-32E 1.56 from
 NW Cor of SE 1/4 to SE 1/4

DHC, Cor

N60-30W
 1.595

8758

North
 69 links

DHC B.T.
 20 W, O.

NW 1/16

#2

87-58
 N25-32E
 N62-26W

CS FILE FOLDER

CONTAINS

MORE

INFORMATION