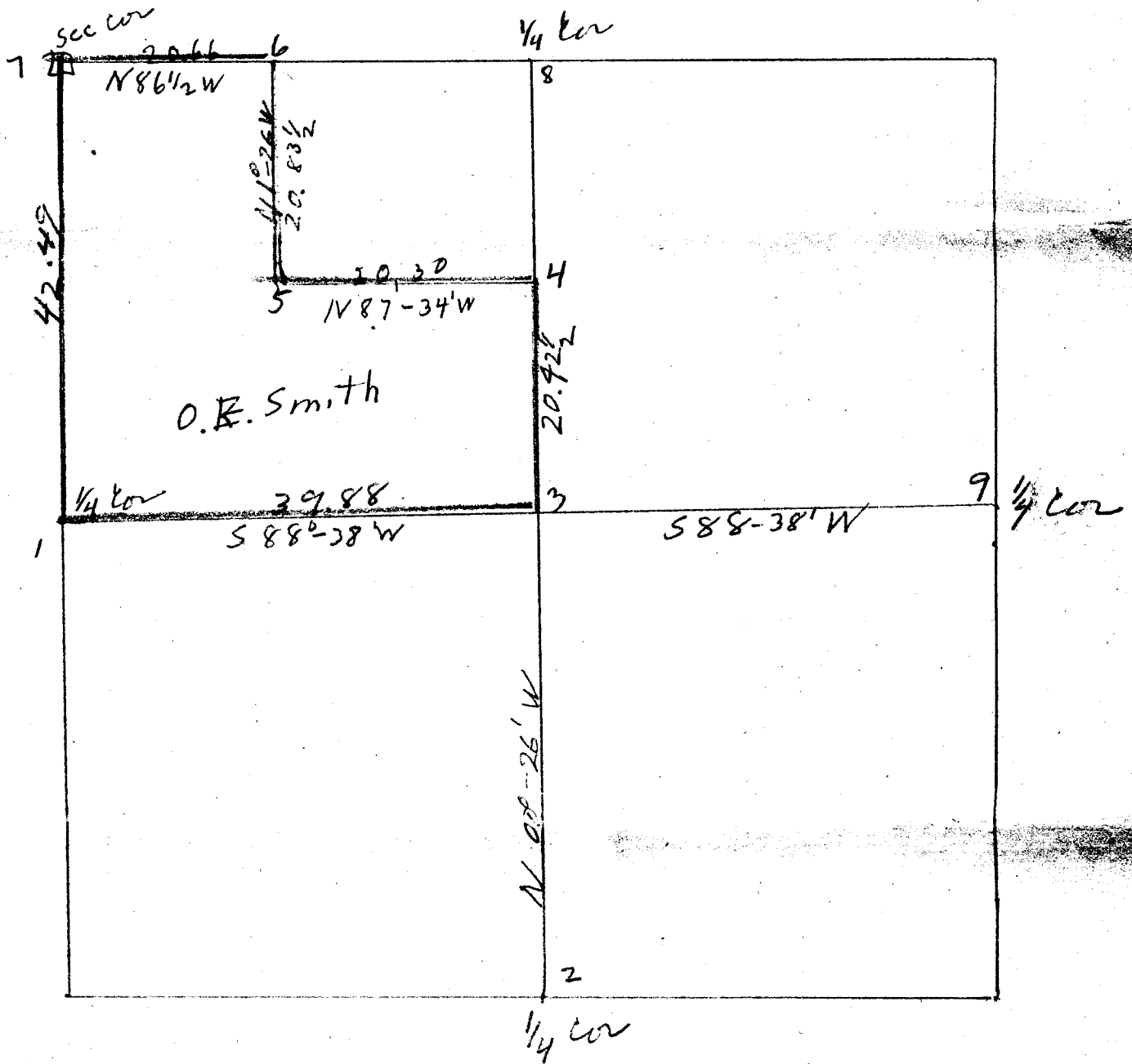


Survey made for O.E. Smith
 Sept 14-17 - '08
 T26S R3 W.W.M.



COUNTY SURVEYOR'S RECORD, DOUGLAS COUNTY, OREGON

MADE FOR - C. E. Smith
September 14, 1908

T 2 6 S., R. 3 W W.M

Began survey at the $\frac{1}{4}$ corner on West side sec. 21. I found a stone set by Co. Sur. Britt but B Ts decayed. However old trees in evidence. I run East on random at 40.00 chains set temp. stake for cen. of sec. Discontinue chaining here and continue on East on random line. I intersect the E. bdy. of sec. 21, 1.80 chains N. of $\frac{1}{4}$ corner on E. side of sec. I note this corner has been reset and B.T.s and corner stake in good condition.

I commence at $\frac{1}{4}$ corner on South side sec. 21. I find old corner set by Co. Sur. Britt and note that one bearing tree is standing but out of position as per Gov. field notes. I make test of position of corner and find it impossible to set stake according to old field notes and use cor. as set by Britt. From this corner I run random North and at intersection of this random with random run East I note I fall 20 lks East of temp stake set for cor. of section. I began chaining at the intersection of these random lines and at 39.95 chs. I fell .64 lks East of position assumed as position of $\frac{1}{4}$ cor on the North of sec 21. The position of this $\frac{1}{4}$ cor was taken as noted below for cor. No. 8. The corner according to E. B. Chapman was located by Co. Sur. Britt as well as the ones on the South and West side of the section. The old Gov. field notes in no way apply to this corner as they give post and rock mound. No rocks in the vicinity.

From this $\frac{1}{4}$ corner on the North side sec 21, I run random N 89°

47' W at 41.32 I fall 2.37 chs S of corner for N. W. cor. Sec. 21.

From these randoms lines I establish the center of the sec. 21 at a point 39.98 chs. S 86° 38' E of the $\frac{1}{4}$ cor. on West side sec. 21 at the intersection of the N&S and E&W random lines .

From the center of the section O. E. Smith's land was surveyed and corner set as per plat. Also, I ran a random line North 40.00 chs. from the N. W. corner sec. 21 and at the 40.00 chain point made diligent search for $\frac{1}{4}$ corner but none in evidence. I set temp stake at this point and continue a random West for 20 chs and set temp stake. Chainmen duly sworn.

May, Dec. 20°52' E

Corner N° 1' I reestablish as follows:

Set sand stove properly marked 4" x 8" x 18 from which Red fir 15" dia brs N 62°34'W 83 lk dist.

Red Fir 13" dia brs N 70°56' E 109 lk dist.

"

Corner N°3 Center of sec 21

I drove rifle barrel $\frac{1}{4}$ " dia 2 $\frac{1}{2}$ ft in the ground and set East of it 2 inches, a red fir post 4"x4"x 3' from which

White oak 8 ins dia brs N 61°07' W 3.03 lks dist.

Red fir 18 " " " S 37°48' E 4 59 " "

Red oak 14 " " " S 31°15' W 5.90 " "

"

Corner No. 2 Old white oak stake set by Co. Sur. Britt.

Corner No. 4 Marked root of red fir tree. Tree 36" in dia from which
maple 36" in dia brs S 45°30' E 22 lks dist.
W fir 15" in dia brs N 38°10' W 34 lks dist.

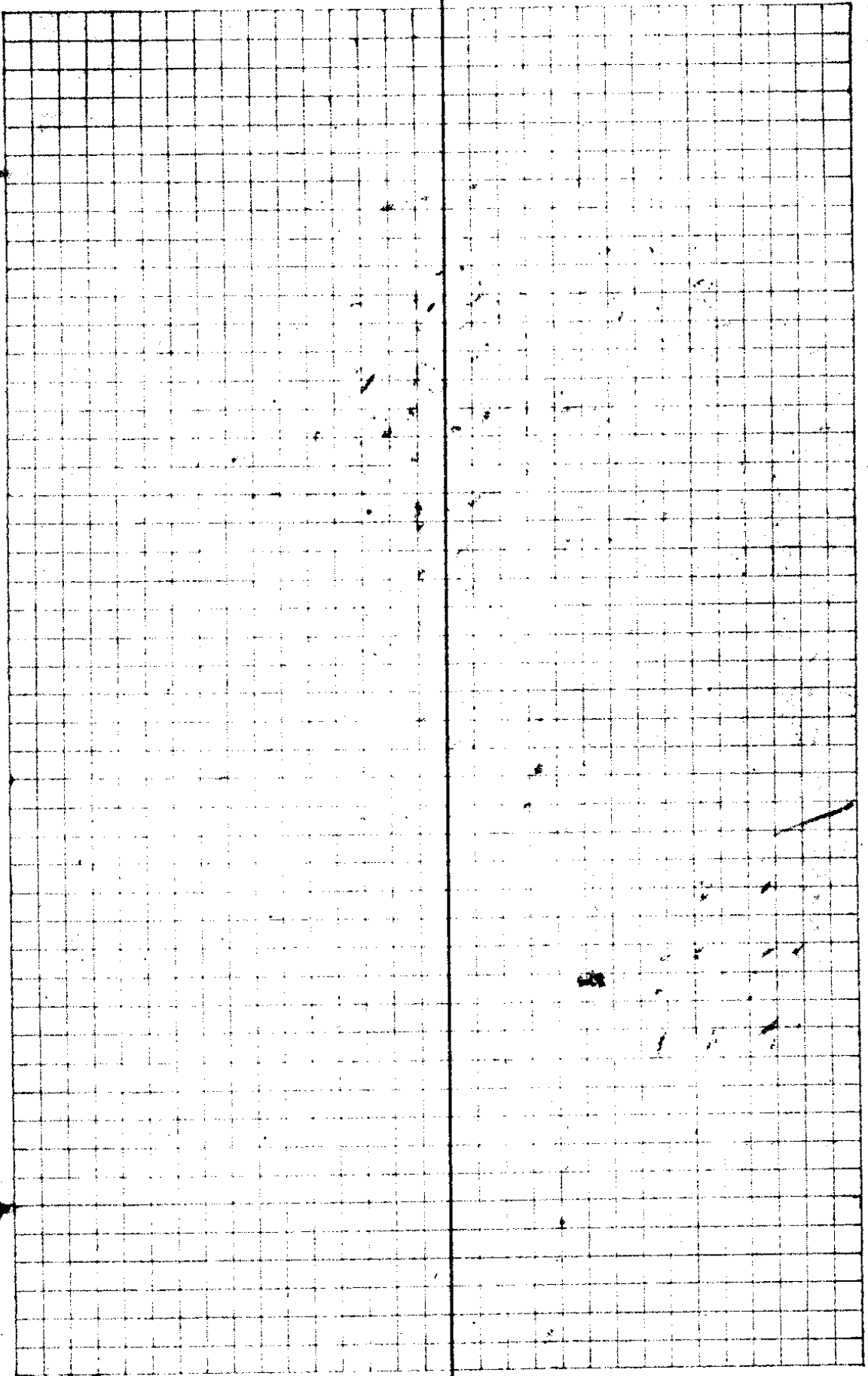
"

Corner No. 5 Set cedar post 4"x4"x3' from which
Red cedar 14" dia brs. S 54°10' W 1.195 lks dist.
Ash 12" dia brs. N 32°20' W 1.07 lks dist.

"

Corner N°6 Set White oak post 4"x4"x3' from which
Red fir 16 ins dia brs. S 65°30' E 43 lks dist.
Madrone 12 ins dia brs. N 9°15' W 22½ lks dist.

7-46



1

O. Smith

$\Delta 12$ 4-30' 303	3.02	20-28		S 80-30W	S 79-42W
$\Delta 11$ 6° 31'	3.093		3°-27'	N 79W	N 79-50W
$\Delta 10$.709	0-57'		N 82-30W	N 83-17W
$\Delta 9$ 6° 46'	4.67		72-55'	N 82-W	N 82-20W
$\Delta 8$ 5-15 259 Conv. Fund. Δ	2.56	51°-33'		N 89-30W	S 89-45W
	.757	51-05'		N 38W	N 38-42W
$\Delta 7-6$ 5-30' 177	1.763		12°-01'	N 13-E	N 12-23E
$\Delta 6-5$	2.337		0°-04'	N 1°E	N 0-22E
$\Delta 4-4$ 3-30' 206	2.06		3°-19'	N 1°E	N 0°-18E
$\Delta 3$ 1° 31'	3.11	2°-39'		N 2°-30W	N 3-01W
$\Delta 2$ 5-30' 532.5	3.31		0-38'	N 0W	N 0-22W
$\Delta 1$ 4-50' 500	2.38 4.99	7.37		N 1° W	N 1° W

Center section

.46 lbs W

.05 LK W

.0RE

.0# LK E

.04 LK W ✓

.0.5 LK

OR

Found
BT.

C. S. File No.

7/4/6

2

O B Smith 7-46

Δ22

1.215 51-32

S87-30W S89-00W

con Found

1.33 44°-15'

N40W N39-28W

Δ21

5-30 226

2.25 0°-29'

N4-30E N4°-47E

Δ20

5-30 268

2.67

4°-25' N5 E N5-16E

Δ19

6° 354

3.52

17°-51' North N0-51E

Δ18

5-30 187

1.86 43°-53'

N18W N18-42W

Δ17

8° 108

1.069

27°-16' N26E N25-11E

Δ16

8 135

1.337

0°-52' N10 W N2°-05W

Δ15

1.38

2°-40'

N1-30W N2-57W

Δ14

5-30 500

1.37 } 6.30
4977 }

97°-02' N0-30E N0-17W

con
~~Δ14~~

3.80

12-29

S83-30W S82-41W

Δ13

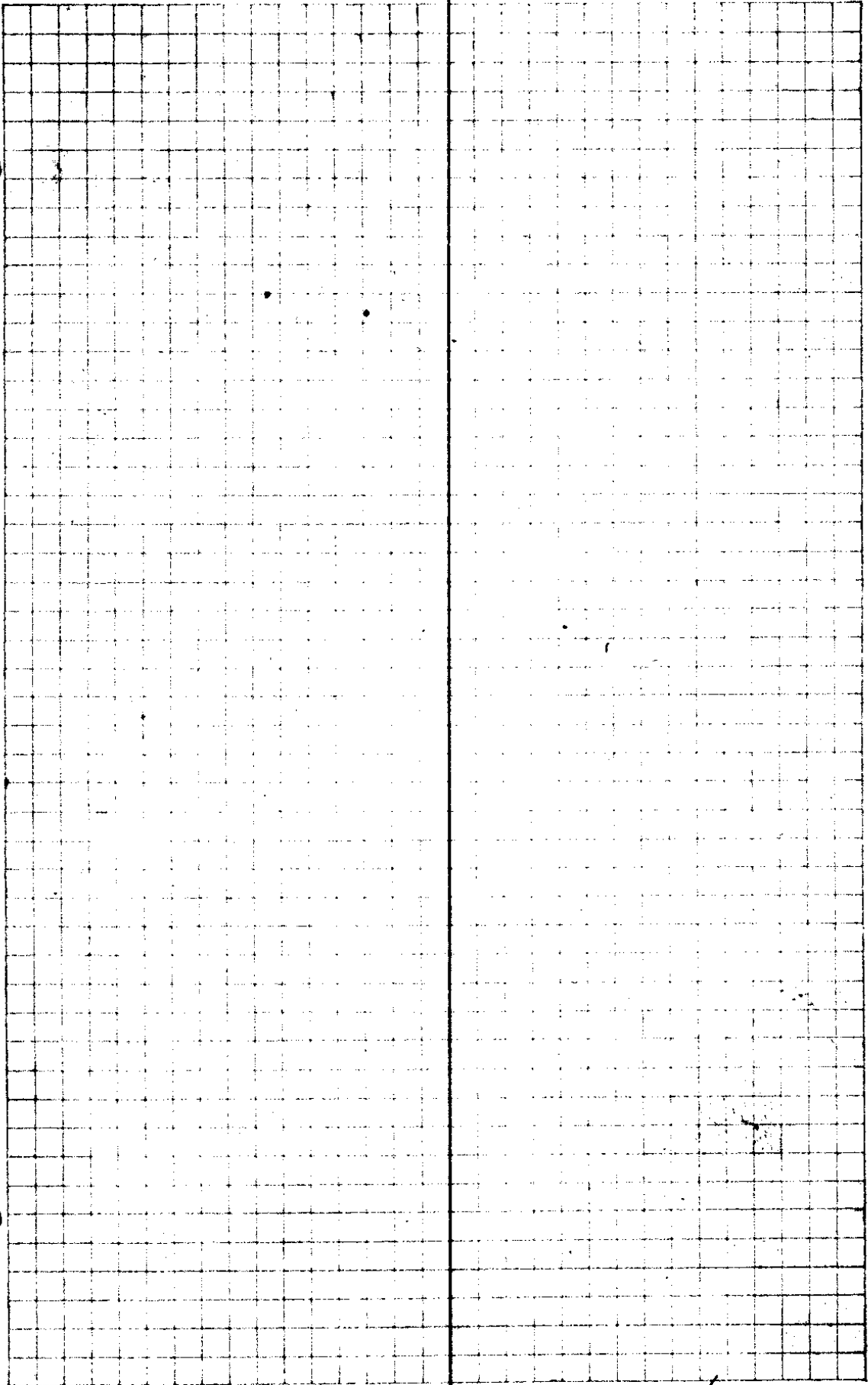
20-15 265

2.486

15°-28' N84W N84-50W

Δ12

7-46



C. S. File No. 7/46

3

O.E. Smith

$\Delta 33$ 15 ³⁰ 3638	3.507	21.709	15 ⁴⁵	N15E	N16-25E
$\Delta 32$ 5 ⁰ 151	1.504		4 ⁰⁷	North	N0-40E
$\Delta 31$ 12 ²⁰ 341 Com 21-29	3.407		10 ⁴⁸	N3 0	N3 ⁰ -27 0
19-30 114 $\Delta 30$	1.074	36 ⁴³		S74-W	S74-45W
12 ³⁰ 223 $\Delta 29$	2.177	18 ²⁰	5 ⁵⁰	N70W	N68-32W
27 ³⁰ 445 $\Delta 28$	3.947		11 ⁵⁸	N75-30W	N74-22 ^W
10 ¹¹ Hill $\Delta 27$	3.65		3 ⁵¹	N87W	N86-20W
13 ³⁰ 203 $\Delta 26$	1.703		3 ⁰⁵	S89W	S89-49W
3 ⁰ 360 $\Delta 25$	2.595	2 ¹⁵		S86-30W	S86-44W
10 152 $\Delta 24$	1.497	0 ⁴⁴		S88-30W	S88-59W
5 ⁰ 255 $\Delta 23$	2.540	2 ⁵⁹		S89W	S89-43W
8 236 $\Delta 22$ in line	2.336		3 ⁴²	N89W	N87-18W

7-46

June 15

5.

Time 76'20"

Hor 24°09'

Ver 26°00'

Time 5:17.5'

Hor 24°50'

Ver. 26°8'

N 81° W.

H

V

N 18° - 50 E

N 3° - 05 E

N 1° - 02 W

cov

Computed course 77-10 W

90
 12 - 56
 90
 122 - 50

cov in

old tree in Kev... line

marked new tree

Pin 16" N 68 E 24 "

" 24" N 44° W 78 "

Pin 12" S 32 E 60 "

Pin 20" S 76 W 51 "

C. S. File No.

7/46

4

20 94
121 37
53
O. Hill

$\Delta 45$
9° 222 2.193 0-52 N1°W NO-07W

$\Delta 44$
13° 348 3.391 17-14 NW 17-54E

$\Delta 43$
13° 402 3.907 0°-35' N17W N16-29W

$\Delta 42$
11° 175 1.718 0-39' N16-30 N15-54W

$\Delta 41$
16-30 2316 2.212 3-01' N17W N16-33W

$\Delta 40$
14-30 2957 2.863 5-25 N15W N13-32W

$\Delta 39$
8-15 223 2.037 4°-24' N9W N8-07W

$\Delta 38$
2.07 3-14 N5W N3-43W

$\Delta 37$
14-15 325 3.15 21°-53' N7-30W N6-57W

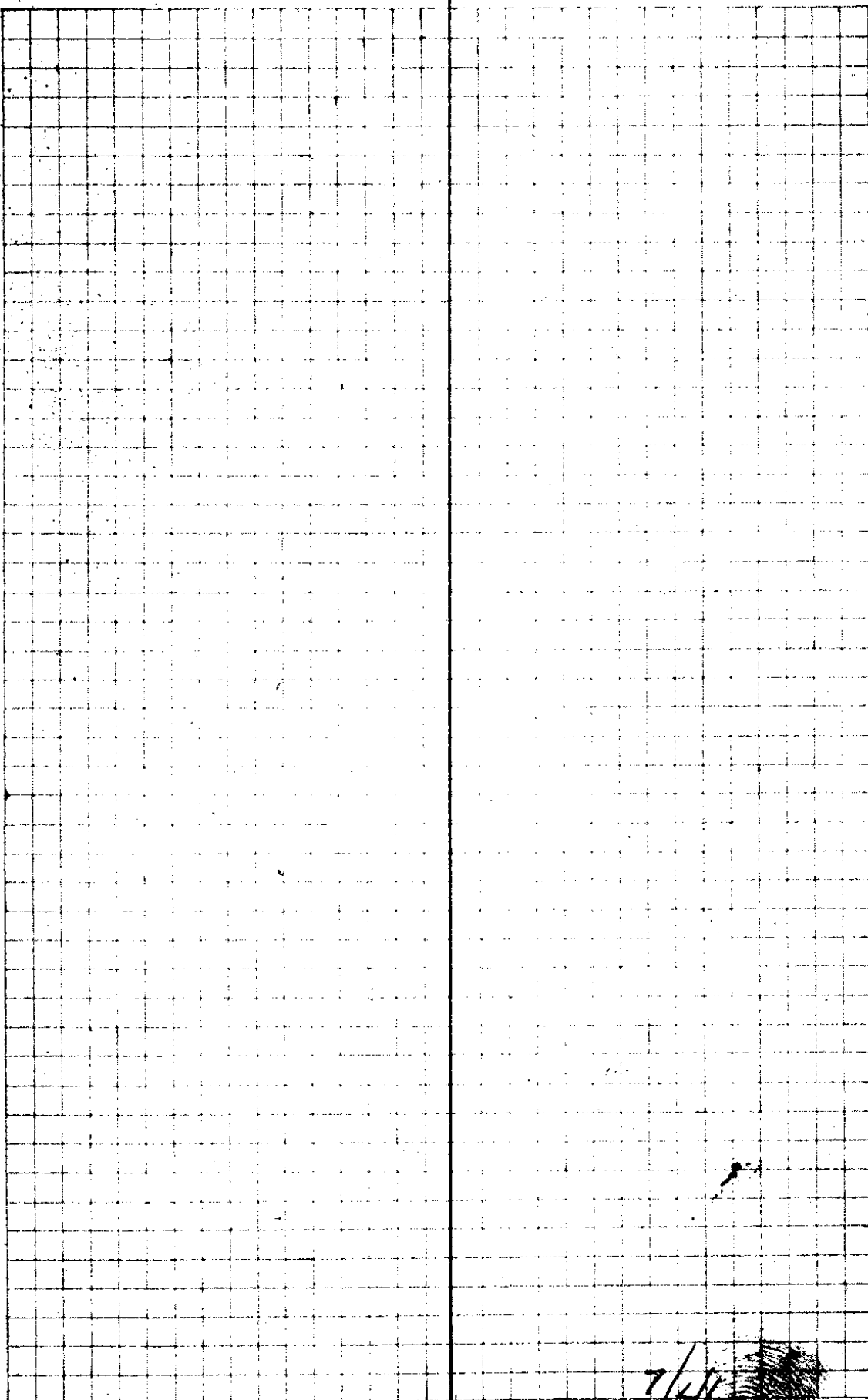
$\Delta 36$
12-30 2.71 2.646 10°-22' N14E N14-56E

$\Delta 35$
1° 361° 3.58.3 0-39' N16E N16-18E

34
4° 1927 1.922 0°-32' N16-30E N16-57E

33

7-46



C. S. File No. 7/46

5

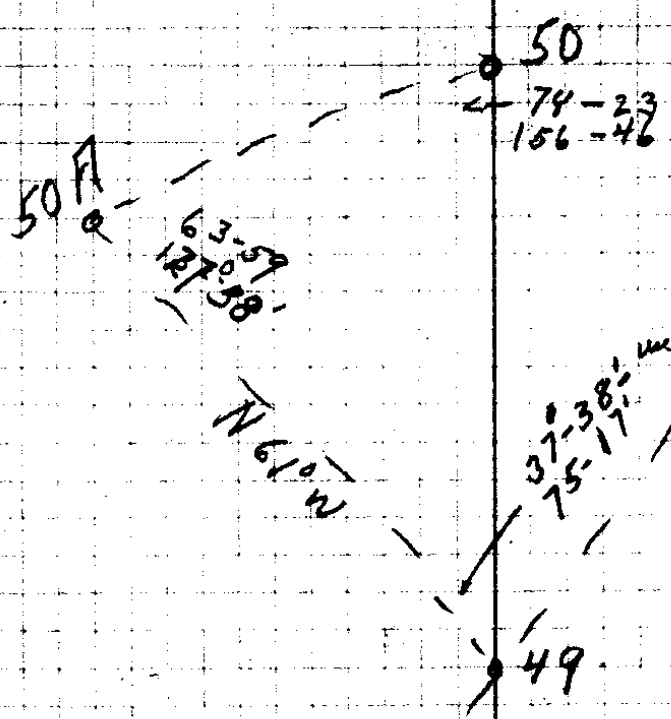
D E Smith

low pipe					
	23 ³		61-01	S40 E	S39-32E
Δ53					
	3.98		79-56	N79-30E	N79-27E
Δ52					
6 ³⁰ 5 ⁰	1 ⁰⁰ 1 ⁹⁶⁸	19.968	27-00	N 1°W	N0-29W
Δ51					
	3.325	5 ⁰ 24		N 27 W	N27-29W
Δ50					
	7.356	37 ⁰ -58 38 ⁰ -00		N23 W	N 22-05W
Δ49					
	2.31	20 ⁰ -45'		N15-30E	N15-54E
Δ48					
	1.03		35 ⁰ -12	N36-30E	N36-39E
Δ47					
16 600	4.806	39-22		N 1° E	N1-27E
Δ46	my 1/4 Cor.				
6 ⁴⁵ 2 ³⁷	2.353		40-56	N40 E	N40-59E
Δ45					

6. O.R. 7-46

12 W.O. S 35-30W 23 LK
12 " " N 72 E 54 " "
16 " " S 79-30E 20 " "
16 " " N 72-30W 131 " "

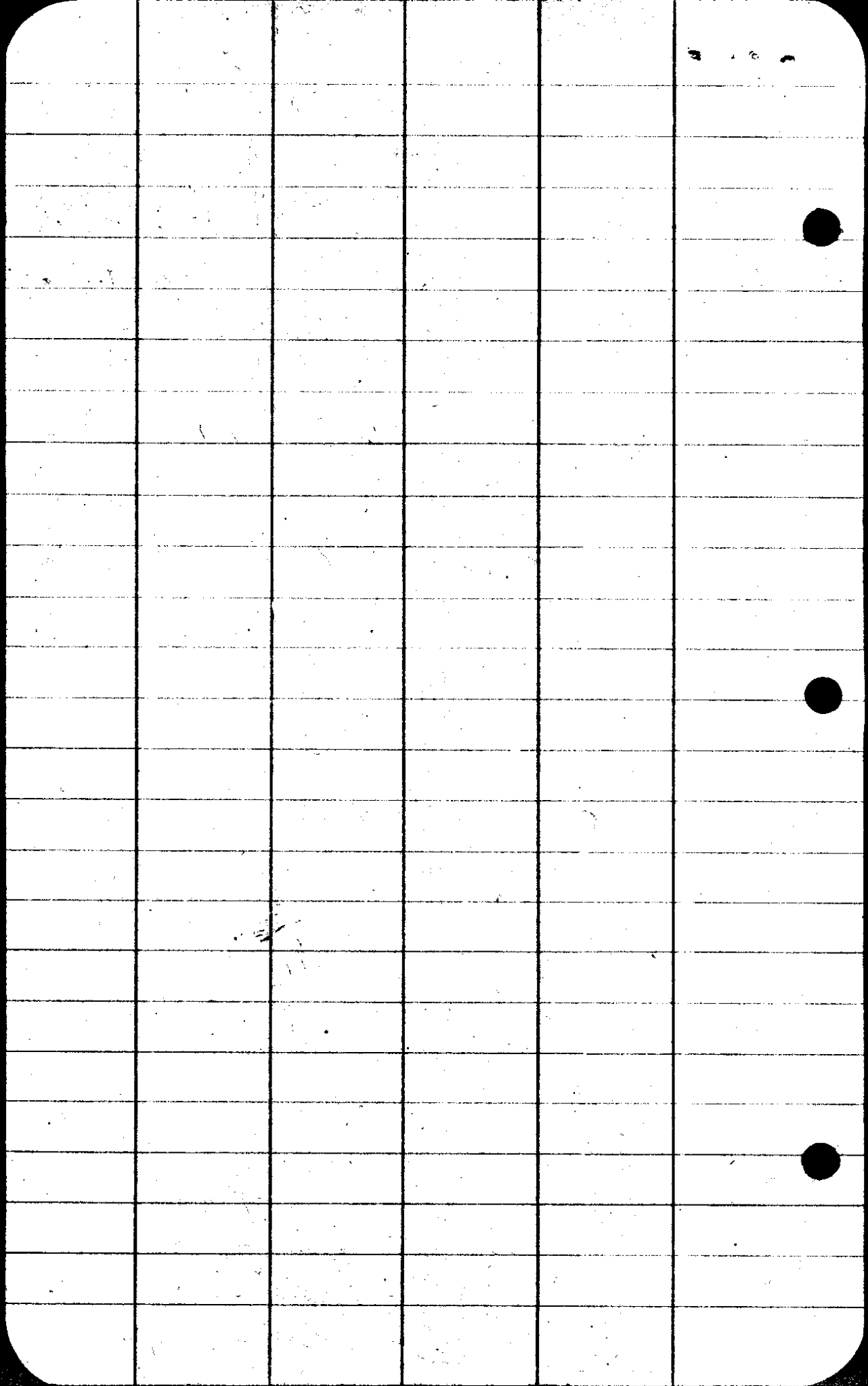
Cross I. Pipe 8.9
17-16



Fire 12" - N 75 E - 10 FT
" 10" N 64 50W 120 "

17-16

C. S. File No. 7/46



CS FILE FOLDER

CONTAINS

MORE

INFORMATION