

# Field Notes of Survey for

Ermal Briggs

T305R5W

## Purpose:-

- 1- To establish South line of D.C. 52
- 2- To determine difference if any between the area enclosed in his fences and the area covered by his deed.
- 3- To find the area enclosed between his fences and the river

5-21-23

Monday 3:00 P.M. to 11:00 P.M. with  
A.H. Guy Corden obtaining data + visit  
to ground.

5-22-23

Tuesday 8:00 A.M. to 2:00 P.M. in  
Courtthouse obtaining data on deeds  
2:00 P.M. to 6:00 P.M. Going to  
Briggs' and investigating corner  
at NE cor. Cl. 52.

May 20 1923

Cloudy & Cool  
Sun. P.M.

(2)

Sta.	Dist.	L.	M.C.	C.C.	
	28 <sup>125</sup>				West 87°11' W ✓
#9	377 <sup>4</sup>	R 8°34' 4°17'	587°50' W	588°32' W	707' - 300 298
#8	(1221) 259?	R 8°01' 4°01'	582° W	584°32' W	
#7	77 <sup>6</sup>	R 11°39' 5°49'	577° W	578°43' W	
#6	189 <sup>0</sup>	L 21°28' 10°44'	588 <sup>3</sup> ° W	589°27' W	190 <sup>2</sup> + 6°04
#5	274 <sup>6</sup>	L 0°52' 0°26'	588°50' W	589°53' W	
#4	150 <sup>4</sup>	R 2°14' 1°07'	588° W	588°46' W	
#3	188 <sup>8</sup>	L 2°14' 1°08'			
#2	478 <sup>2</sup>	POT.			{ 2662 - 8°58' 214
#1	125 <sup>8</sup>	POT.	West.	589°53' W	

NE Cor. Fuller Co. Cl. 52

98  
40  
35

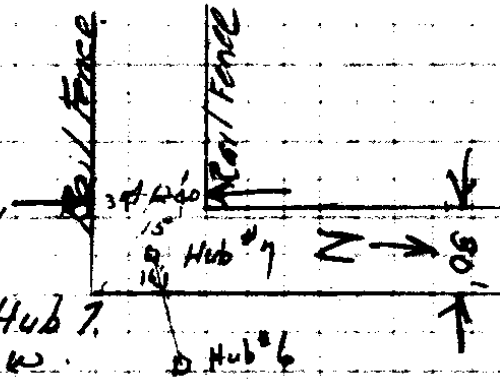
172  
18  
3

Irving T.  
Alec. Dubell HC.  
Ernal. Briggs RC.  
Oscar Swallowd. Axe.

Hub & Tack. Set on some prev  
Survey. Probably Road.

In Road.

Intersection Roads W & N  
Crossed Rail Fence, 16' Back of Hub 7.  
Rail Fence. 39' S of #7. E+W.



134	9849
126	7 266.2
200	
	19698
	59094
	19698
	2580438
3	214
	472

1/4 W of Hub #4. Blazed Tree.  
just S of line.

1/4 W of Hub #2. Creek Course S.

258° W of Hub #1 to  
← To Line fence between Briggs & Willis.  
↳ 154° W of Hub #1 a W.D. live tree.

Set Hub from Madkone said by H. Willis  
to be W.T. to D.C. 52. Tree blazed  
but not legible.

Vari. 20° E C.S. File No. 7/29

Sta Dist Angle MC CC

	37 <sup>23"</sup>			
13	76°			✓
Hub 12		21°12' L 10°36'	S 81°15'W	S 82°24'W
Hub 11	299 <sup>9</sup>	5°10' L 2°35'	N 88 <sup>1</sup> / <sub>2</sub> °W	N 87°00'W
Hub 10	313 <sup>2</sup>	5°33' R 2°46'	N 86 <sup>1</sup> / <sub>4</sub> °W	N 84°25'W
Hub 9	274 <sup>6</sup>	8°54' R 4°17'	West	N 87°11'W

2844<sup>5</sup>



Observation on the Sun  
 Survey for Briggs May 23 1920 (6)  
 Hub # 11 BS Hub # 12

Obs. #	Vert L	Hor L	Time	MC
#1	55°29'	35°53'	2:15 PM	558°30' W
#2	54°39'	32°21'	2:20 PM	558°00' W
#3	54°18'	31°39'	2:22 PM	558°30' W

DO

$\cos Q = \tan L \tan A - (\sin D \sec L \sec A)$   
 Q = L between Sun & Meridian  
 L = Latitude. A = Altitude  
 D = Declination

Hub 13 BS Hub 12

	Vert L	Hor L	Time	MC
1	33°44'	184°41'	4:20	584°30' W
2	33°20'	185°05'	4:23	585°30' W

Decl. Greenwich 20°25'58"  
                   6' 02"  
 D = 20°19'56"  
 Sin D = .34746  
 Diff 1 Hr. 29.37"  
                   12.33"  
                   88.11"  
                   88.11"  
                   352.44"  
 60 | 362.1321"  
                   6' 02"

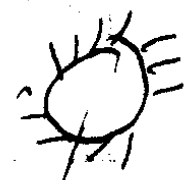
Latitude = 42°59'

360  
17019  
19444

(7)

N 89.33 W  
N 89.31  
N 89.51 W

Horizontal L



Hub 13

Hub 12

#1 582°24' W  
#2 582°23' W

No 1 Alt = 33°44'  
Refr = 1' 27"  
A = 33°42' 33"

Tan L = .93197  
" A = .66715  
465985  
93197  
652379  
559182  
559182  
.6217637855  
.57093  
.05083 = Cos Q.

Q = 587°05' W

Sec L = 1.3669  
" A = 1.2021

13669  
27338  
1640280  
1.64315049  
Sin D = .34746  
985980  
657260  
1150205  
657260  
492945  
5709 288990

C. S. File No. 7/29

8

Sta Dist L MC CC

7

Lew Swick Arrived about 4<sup>30</sup> PM on 30.

18

405<sup>E</sup>

S 1° 10' E S 0° 19' E ✓

17

291<sup>9</sup>

25° 08'  
L 12° 34'

S 10° 45' W S 12° 15' W

- 7° 45' - 2946

16

192<sup>6</sup>

28° 30'  
R 14° 15'

S 3° 15' S 2° 00' E

- 9° 34' - 1953

15

146<sup>8</sup>

4° 31'  
L 2° 15'

S 0° 25' W

14

427<sup>5</sup> ✓

10° 34'  
R 0° 57'

S 1° 30' E S 0° 42' E

5° 17' - 300  
1282

Hub 13

66° 32'  
L 83° 16'

S 82° 24' W

Computation Sun Observation #2

Alt = 33° 20'  
Refr = 1 28  
A = 33° 18' 32"

Tan L = .93197  
" A = .65710  

---

99197  
652379  
465985  
559182  

---

612397487  
568315998

Co Q .044081489  
Q = 587° 28' W

Sec L 1.3669  
" A 1.1966  

---

82014  
82014  
123021  
150359  

---

1.63569254

Sin D .34746  

---

781378  
654252  
1144941  
654252  

---

490689  

---

568315998

Fence 19' Left.

Quit Work 6 P.M.

Fence 2' Left of Hub 17

Fence West from cor 68' to intersection  
Fence Cor. 43' Ahead of 16

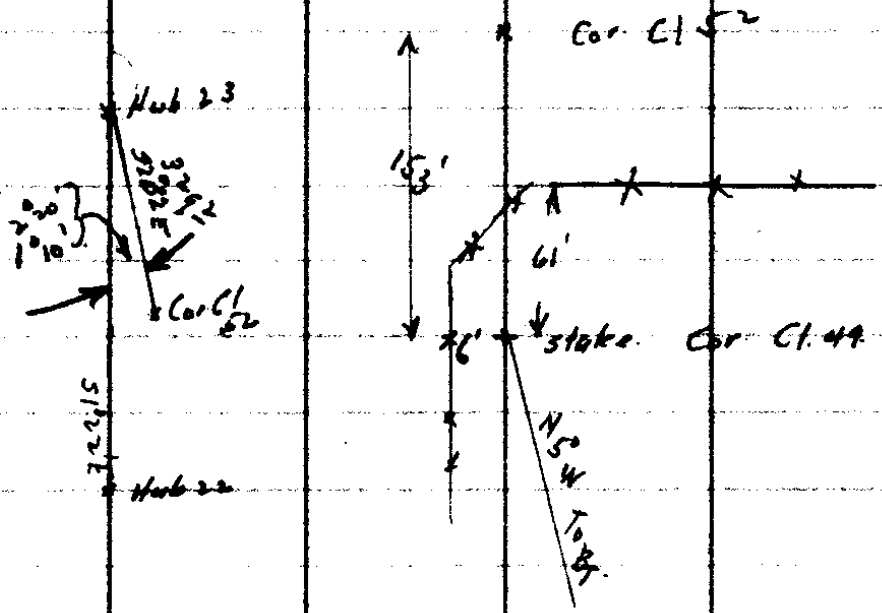
Fence 3' Right

Fence 5' Right  
On Hub 13 BS on Hub 12.

C. S. File No.

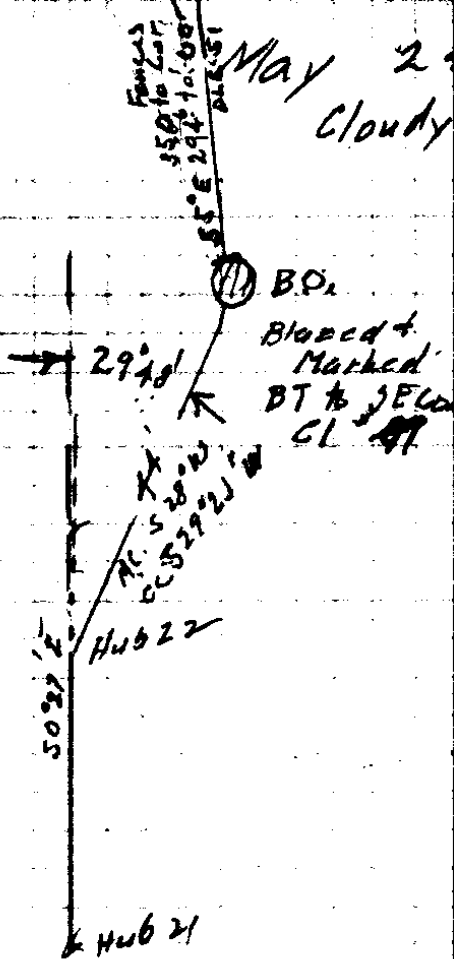
7/29

Sta. Dist. Angle. MC CC.



23	814 <sup>✓</sup>		S 2 <sup>1</sup> / <sub>4</sub> ° E	S 1 <sup>1</sup> / <sub>2</sub> ° 22' E	300-6 <sup>00</sup>
22	329 <sup>8</sup>	L 1 <sup>50</sup> ' L 0 <sup>55</sup> '	S 3 <sup>1</sup> / <sub>4</sub> ° E	S 0 <sup>27</sup> ' E	
21	125 <sup>9</sup>	R 8 <sup>06</sup>	S 9 <sup>3</sup> / <sub>4</sub> ° E	S 8 <sup>33</sup> ' E	
20	1245 <sup>1</sup>	L 15 <sup>24</sup> ' L 7 <sup>42</sup> '	S 2 <sup>9</sup> / <sub>4</sub> ° E	S 0 <sup>51</sup> ' E	-5 <sup>19</sup> -300 947 <sup>2</sup>
19	289 <sup>2</sup>	R 3 <sup>27</sup> ' R 10 <sup>44</sup> '	S 4 <sup>1</sup> / <sub>2</sub> ° E	S 2 <sup>35</sup> ' E	284 <sup>0</sup> -4 <sup>02</sup>
* 18		L 4 <sup>32</sup> ' L 2 <sup>16</sup> '		S 0 <sup>19</sup> ' E	

Gary Clark's Easement of 1/4  
 between Fullerton Church & Gary Clark's



Fullerton Church  
 550 to 1000  
 294.10  
 S 55° E

May 24 1923

Cloudy AM Sun PM.

T Irving

H.C. L.H. Smick

R.C. Alec Dubell

Axc. Oscar Swickord

" ~~Frank~~ Briggs  
Emma

814.2 856

9975  
 284  
 39900  
 79800  
 19950  
 2832900

99452  
 300  
 29835600  
 7957  
 300  
 2987100  
 797.2  
 1245.9

(298 + 255) + 100 Fence N side Road. (398)

Hub 22 on edge of Bench Patterson's House 50' NE  
 Fence 2' Left of Hub 22

19 to 20 between E 2 Rows in Apple Orchard

Fence 28' E of 19

S Cemetery fence 270' Ahead of #18

36' x 48'  
 Blazed Tree. 250' Ahead of 18 25' E of  
 Line

C. S. File No. 7/29

sta	Dist	Angle	MC	CC
32	505 <sup>4</sup>		N79°E	N79°38'E ✓
31		L 20°44' 10°22'		East.
	Right Bank	5 Umpqua River		✓
	390'			
31	258'			
30	POT.			
117'	178'		East.	
29	POT.			
	639'		N88°W	
28	POT.			
	300			
27	POT			
	491 <sup>5</sup>			
* 26	POT.			
	185			
* 25	POT			
	751°		East.	East.
* 24	SW Cor. C152	R 185°04' 92°32'		
	329'			N 2°32' W ✓
23				

36.35  
276.5  
3589

90 44  
60 38  
30 38

13

66  
330  
330  
3630

11 to River

1727  
6396  
23666

To River Bank

1608  
1567  
2375  
66  
14250  
1425  
156750

At Briggs Line Fence

At Erma Briggs Line Fence N & S

on Island (so called)

At 18' left of Hub 25 a Maple with blaze on S face

C. S. File No. 7/29

Sta	Dist	Angle	MC	CC
40	735 <sup>4</sup> ✓		N 0° 20' W	N 0° 06' W ✓
39	336 <sup>3</sup> ✓	0° 34' R 0° 17'	N 1 3/4° W	N 0° 23' W
38	533 <sup>3</sup> ✓	0° 54' L 0° 27'	N 0° 15' W	N 0° 04' E
*37	178 <sup>1</sup> ✓	12° 53' L 6° 26'	N 4° E	N 6° 30' E
36	497 <sup>2</sup> ✓	13° 47' R 6° 54'	N 0° 50' W	N 0° 24' W
35	845 <sup>2</sup> ✓	8° 01' R 1° 31'	N 1 1/4° W	N 1° 55' W ✓
34		187° 54' L 93° 54'		S 88° 00' E
34	211 <sup>9</sup>	R 84° 26'	S 88 1/4° E	S 88° 00' E ✓
33	164 <sup>6</sup>	43° 33' R 21° 47'	N 69 1/2° E	N 70° 13' E
32	376 <sup>5</sup>	18° 44' L 9° 25'		N 79° 38' E

300 - 2° 40' 236° - 4° 31' + 200

300 3° 00' + 362

300 3° 47' 235° 6° 25'

179 - 45° 50'

198 - 6° 55' + 300

274° 72° 00' 273° - 6° 55' + 300'

May 25 1923

25<sup>th</sup>

(15)

$$\begin{array}{r}
 88 \\
 93 \ 55 \\
 \hline
 181 \ 55 \\
 180
 \end{array}$$

Irving K

Smick HC

Alec RC

Ernal Axe

Oscar Flag

Fence 3' Rt of #39

Fence 3' Rt of 38

B.D. with Line Blaze 24' Ahead of 37 & 8' Left

Fence 32' Rt of #36  
Large B.D. with line blaze

2' Rt of Line

(Begin Work May 25 1923)

Rail Line Fence 24' R Hub 35

End of work May 24 1923

Rail Fence. N side of road back 37' Road

$$\begin{array}{r}
 70 \ 13 \\
 21 \ 47 \\
 \hline
 179 \ 20 \\
 92
 \end{array}$$

9448	1984
174	9927
8953	15888
69636	3968
99.48	17956
17806	17856
	176951.68
	300

Maple on S Bank River said by to be BT.  
Hub 15' N of edge of water. Line Fence 5' E  
No evidence of Alder BT. set on original  
Survey

River 40' R

River

C. S. File No.

7/29

Sta	Dist	Angle	MC	CC
-----	------	-------	----	----

From Stake for corner of C1.52. a  
 Pine about 44 or 46" dia is the correct  
 Bearing and distance. This tree has been  
 blazed but burnt out and chopped into  
 probably for pitch.

Hub 41

set IP. ~~43~~ 5 of at 42 66' for Cor C152

42

96<sup>5</sup>

N 0° 2' E N 1° 32' E

40

3° 15'  
R. 1° 38'

N 0° 06' W

44

30<sup>6</sup>

N 1° E

N 2° 09' E

40

R 2° 15'

N 0° 06' W

Found B.O. B.T. for Cor Cl. 53.  
 Stump had been pulled but was lying in  
 hole. Portion of Oak Log lying about  
 30' West. Scribe marks perfectly readable  
 when exposed. Set 4" squared oak Cor.  
 N 5° W. from B.T. for Corner to D.L.C. 53  
 Set another Cor to D.L.C. 52 1 ch  
 South as called for on Original  
 notes.

See Notes above.

N.W. Cor. Claim 53.

Cor. 115

52

(18)

Sta Dist Angle MC CC.

NE Cor. Place of beginning

46. 68<sup>2</sup> N20°W N19°36'W  
39 11  
2 19 36



47 87<sup>4</sup> North

46 POT 275<sup>3</sup> 277<sup>4</sup> - 7°05'

45 POT 297<sup>3</sup> N 1/2 E North 300 - 7°37'

" 44 180° R 90°00'

43. POTP 237<sup>2</sup> 300' - 7°00'

42<sup>8</sup> West West 125°  
NE Cor. (15) 180° R 90°00'

S 1/4 E South

19

$$\begin{array}{r}
 99237 \\
 2774 \\
 \hline
 396948 \\
 694659 \\
 198774 \\
 \hline
 275283438
 \end{array}$$

$$\begin{array}{r}
 99255 \\
 29765 \\
 125 \\
 \hline
 2228 \\
 297E
 \end{array}$$

$$\begin{array}{r}
 99118 \\
 297304 \\
 2753 \\
 \hline
 5726
 \end{array}$$

$$\begin{array}{r}
 660 \\
 3726 \\
 \hline
 874
 \end{array}$$

Hub for anterior Col C/52

BS. NW Cor C/53

C. S. File No. 7/29

Tie around

Lot 1

20

Sta	Dist	Angle	ML	CL
-----	------	-------	----	----

Hub 6

✓

54 = 47

L 207°21'  
L 103°41'

N 78°43' E

831<sup>b</sup>

S 2°24' W

53 =

177°16'  
L 88°38'

300 - 158  
+ 229.4

529<sup>z</sup>

N 89°21' W

N 88°58' W

52

210°01'  
R 10°31'

~~N 89°21' W~~

269<sup>b</sup>

S 79° W

S 80°31' W

51

44°12'  
L 22°06'

294<sup>o</sup>

N 80° W

N 77°23' W

295<sup>o</sup> - 619<sup>o</sup>

50

109<sup>z</sup>

172°54'  
L 86°27'

146<sup>z</sup>

N 8<sup>o</sup> E

N 9°06' E

# 49

16°15'  
R 8°08'

634<sup>z</sup>

N 1/2° E

N 0°58' E

100' 220'  
7334<sup>z</sup>

Hub 4

177°41'  
L 88°55'

205<sup>z</sup>

N 89°53' E

# Hub 3

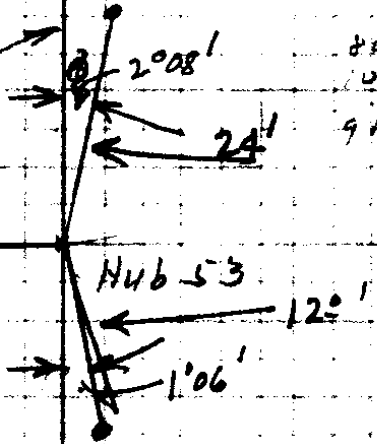
B on Hub 2

999  
21

Hub set by Orig. Field Notes

Far Corner & Said by H. Willis

to be where old corner  
stand



Pipe set by Steward  
for sec. Cor.

Hub 52 at RT L in Road  
Fir with line Blaze 35' E of Hub 52  
Creek 60' E of Hub 52  
Fence 30' left of 52



NE Fence Cor 7' back - Line tree blazed  
East about 75' - Prob. Sec. Line  
Fence 16' RT #48

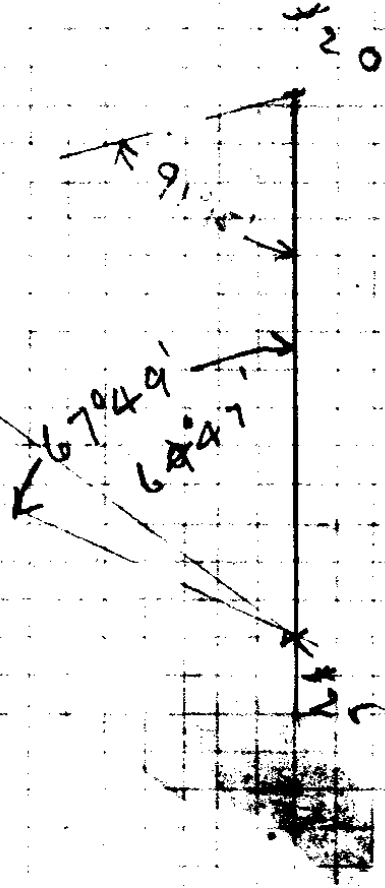
Set Hub POT between Hub 1 & 2 - west  
of rail fence, 205' East of Hub 2

C. S. File No. 7/29



X Blazed RBT

on West Road R/w. Line



(29)

Sta

Dist

Angle

MC

CC

Stewart's Sec Cor.

2228

587°29'E

56

4006  
22°03'

585°26'E

55

11

57

2164

50°01'W

56

Rt 85°27'

2538

N 89°50'E

585°26'E

55

174°41'  
L 87°25'

5164

57°2'W

31°59'W

26

183°57'  
R 91°59'

East

25

25

Flub 57. I.P. set by Jeword for Sec Cor.

On Bank of River Fence 1' RT

Fence Cor 1 1/2 So + 1' W

55 1' E + 2' N of Fence Intersection

C.S. File No. 7/29

Around Prune Orchard  
Outside of DIC 52

26

Sta.	Dist	Angle	MC.	CC
65	120 <sup>B</sup>		512° E	511° 27' E
64	BS on 63	197.52 R. 98° 58'		N 69° 37' E
<del>65</del> = 30				
64	57 <sup>9</sup>	151° 15' L 75° 38'	N 64° W	N 6° 01' W
63	173°	36° 12' L 18° 06'	N 69 1/2° E	N 69° 37' E
62	229°	20° 44' L 10° 21'	N 88° E	N 87° 43' E
61	1076	27° 33' R 13° 47'	S 81° 31' E	S 81° 55' E
60	229 <sup>H</sup>	14° 41' L 7° 20'	N 85 1/2° E	N 84° 17' E
59	275 <sup>B</sup>	46° 13' L 23° 07'	S 88 1/2° E	S 88° 23' E
58	1166	108° 17' L 54° 08'		S 65° 16' E
28	87 <sup>5</sup>	152° 41' R 78° 52'	S 11° 30' E	S 11° 08' E
26				East

N 30° 9

152-104

(27)

5842  
1070  
954

65 on River Bank at Briggs Line Fence

84-18  
73-47  
11-65  
81-55

81-55  
10-21  
92-34  
87-40  
69-28  
92-56  
128-32  
11-20

3' out side Briggs line Fence at intersection.

Fence 7' left

Fence 9' left of 62'

Fence 30' R.

Fence 3' left of 60

Fence 5' left of 57

58' back of 59 1' RT. between.  
Fence 96' back of 59

Fence 12' back of 58

Fence 31' back of Hub 26

This line is along old road (highway)  
used before now. Co Road was opened

C. S. File No. 7/29

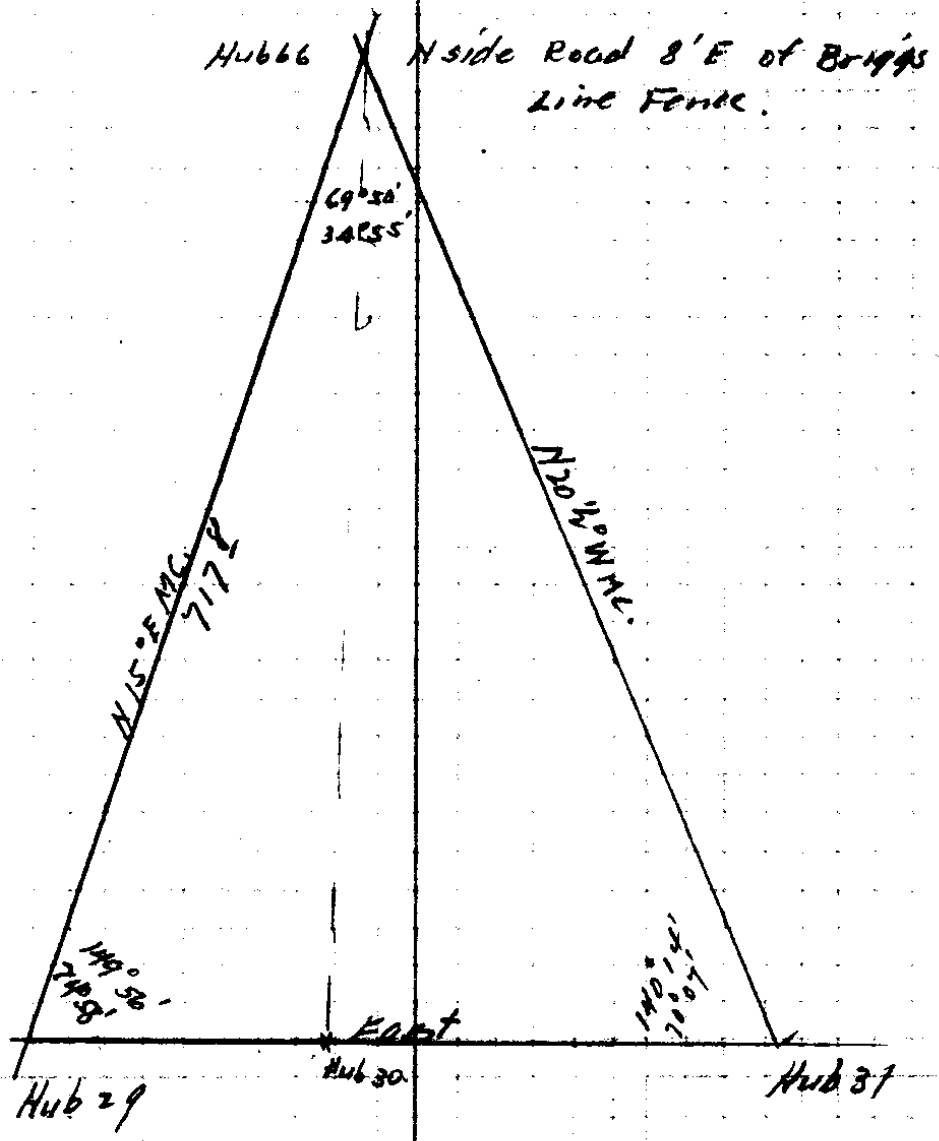
(28)

Sta	Along Dist	Briggs Angle	E line MC	CC
69 = 47	66 <sup>8</sup>		N 19° W	N 17° 14' W ✓
68	992'	L 18° 18' <sup>36° 36'</sup>	North	N 1° 04' E
67	2180'	R 0° 40' <sup>120'</sup>	N 1 1/2° E	N 0° 24' E
66	717'	L 14° 38'		N 15° 02' E
29	for BS			S 11° 22' E

29

Dist to fence  
from line

300	12 West
#67 - +80°	10 "
2100	11 "
1800	10 "
1500	15 "
1200	12 "
900	10 "
600	8 "
300	7 "
66 - 0	

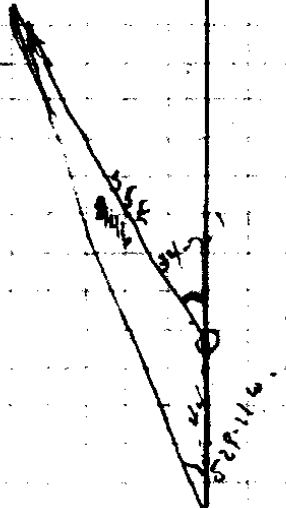


C. S. File No. 7/29



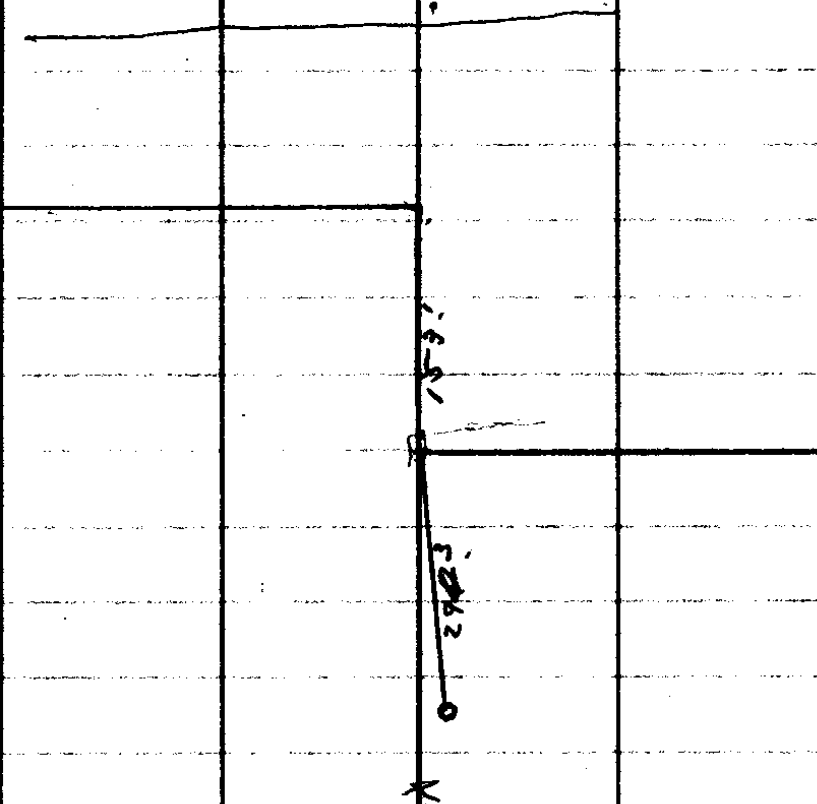
(31)

Aug\*  
266  
2676  
294.36 feet 55



C. S. File No. 7/29

32



33

C. S. File No. 7/29

Tree	MC Bearing	CC Bearing	Dist
------	------------	------------	------

Corner NE DLC 52 John Fullerton

Hub 41

42" Fir 587°W 587°03'W 129°

28 B Oak 561°W 561°35'W 99°

Corner NW DLC 53 Jackson

New Trees 3/8" x 2" x 24" Auto Spring for Corner 4x4 Oak Post

22" B Oak 536°E 535°18'E 88°

14" Cedar N68°4'E N69°04'E 53°

Corner DLC #52 Interior

1/2" x 2 1/2" x 24" Iron Bar in Field

20" B Oak N28°4'W N28°15'W 137°

24" B Oak N25°2'E N25°14'E 107°

NE Cor DLC #52

1" x 48" Iron Rod

22" Madrone 547°W 547°14'W 14°

30" B Oak N33°1/2'E N33°55'E 38°

$3^{\circ} 7.8 \times 7 = 27.3$      $2.4^{\circ}$   
 $179 \ 00$   
 $111 \ 06$

(35)

1" x 3/8" Iron Pipe for Corner + 4x4 oak Post

Original BT.    Mkd. C1.52 C.S.

{ These Two Corners are 16h. apart

Original Black Oak cut down but Stump resting in place + Trunk lying adjoining  
Scribe marks legible.

Original BT.

C. S. File No. 7/29

S.W. Cor. D.L.C. #52.

38

24" x 4" Channel - Truck Bumper:

12" Cedar. 57°E 56°28'E 409<sup>5</sup>

South Gable End of Patersons Barrs N28°28'E

S.E. Cor. D.L.C. 49-

4" x 24" Channel

Re-marked Old B.T.



CS FILE FOLDER

CONTAINS

MORE

INFORMATION