



C. S. File No. 7/4

①

# Legal Survey For

J. M. Yoacom & Ed Weaver.

Legal Notices having been sent  
by registered Mail, I start  
survey on Friday Dec. 16, 1921

Go to sec. cor. bet 20 & 19. Find  
a pile of rocks. The BTs are badly  
burned and almost destroyed.

I put in I.P. for Cor. Mark

36" B.O. S 130° E 72<sup>0</sup> ft

20" B.O. N 69° E 46<sup>5</sup> "

Cor. 1	-	30	222 <sup>5</sup>	N 85° 30' W	N 85° 30' W
1-2	18° 45' L	0	49 <sup>3</sup>	S 76° W	S 75° 45' W
2-3	16° 49' R	0	209 <sup>2</sup>	N 87° 50' W	N 87° 26' W
3-4	18° 04' L	2° 30'	292 <sup>3</sup>	S 74° W	S 74° 30' W
4					
5	8° 52' R	0	256 <sup>8</sup>	S 83° W	S 83° 22' W
5					
6	45' R	2° 30'	245 <sup>1</sup>	N 89° W	N 89° W

Solar, Dec 16, 1921

3 P.M.

Lat 42° 57'

dif 5 hrs.

5 x 6.90" = 34"

Co Lat = 47° 03'

Dec. 23° 18' 41"

			34
5	23°	18'	57"
Ref:		3	18
	23°	15'	0"

No Sun

Corner set in presence I. M. Yocum; Ed.

Bill & Vernon Weaver

222 <sup>3</sup>/<sub>4</sub>

49 <sup>3</sup>/<sub>4</sub>

209 <sup>2</sup>/<sub>4</sub>

292 <sup>0</sup>/<sub>4</sub>

256 <sup>8</sup>/<sub>4</sub>

244 <sup>9</sup>/<sub>4</sub>

S. File No. 7/14

③

J.N. Yocum

Dec 16

6	0	2°30'	207 <sup>6</sup>	N83 <sup>2</sup> W	N82°53'W
7	1008'R	0°	135 <sup>1</sup>	N82W	N82°53'W
8	2°48'L	8°	294 <sup>5</sup>	N85'W	N81°45'W
9	0	1/2°	296 <sup>5</sup>	N85W	N84°33'W
10	3°15'L	0	258 <sup>9</sup>	N88°30'W	N87°48'W
11	1°07'L	1°	142 <sup>1</sup>	West	N88°55'W
12	2°49'R	5 1/2°	296 <sup>6</sup> / <sub>3</sub>	N87W	N86°06'W
13	13023'R <del>11°59'R</del>		1912 <sup>2</sup>	N76W	N70°43'W
14					

13 32  
12 73

(H)

207 <sup>4</sup>/<sub>5</sub>

Lat N 62 7  
W 46 8

135 <sup>1</sup>/<sub>2</sub>

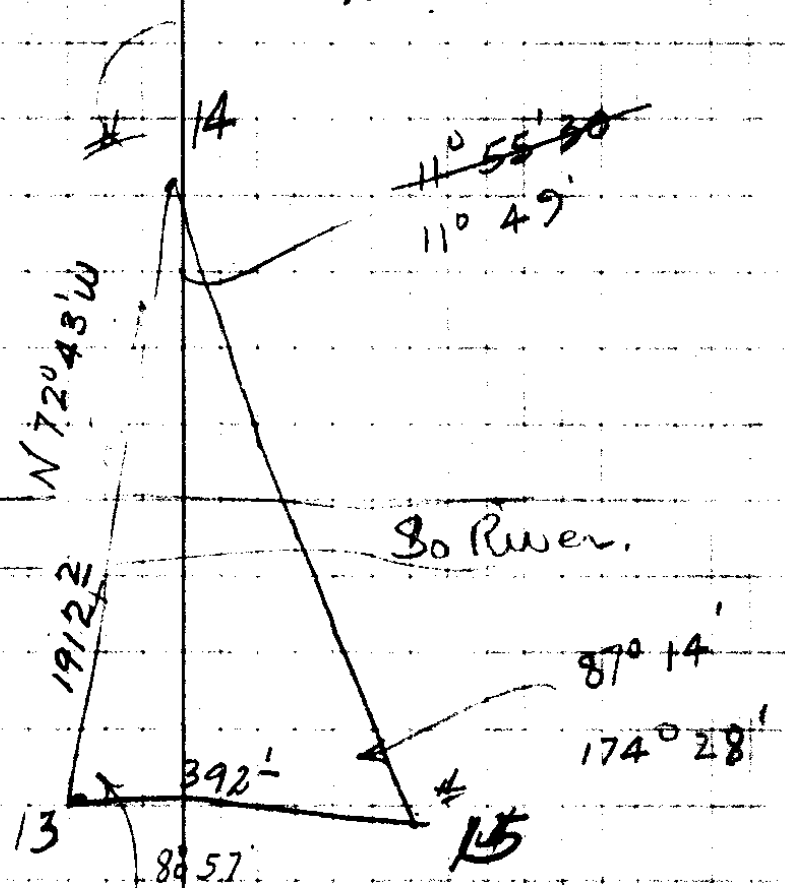
291 <sup>7</sup>/<sub>5</sub>

296 <sup>5</sup>/<sub>5</sub>

258 <sup>9</sup>/<sub>5</sub>

142 <sup>1</sup>/<sub>2</sub>

295 <sup>2</sup>/<sub>5</sub>



1912 <sup>2</sup>/<sub>5</sub>  
110 49  
87 14  
179 63  
99 63  
80 57

~~87° 18'~~ 80° 50' } QW.  
~~161° 41'~~ 161° 41' } 80° 50' 30"

299 <sup>9</sup>/<sub>5</sub>  
92 <sup>2</sup>/<sub>5</sub>  
392 <sup>1</sup>/<sub>5</sub>

$$\frac{x}{\sin 87^{\circ} 14'} = \frac{392^1}{\sin 11^{\circ} 49'}$$

$$x = \frac{392^1}{2048} \times 9988 = \frac{1874^2}{1912^2} \text{ ft.}$$

Dist. to 1/4 cor. to be approx. X 7/14

C.S. File No. 7/14

⑤ Compass wire for Cor

				So	W
14	So	12°	201	197	
	W	8°	111		109
	So	8°	210	208	
	So	-	113	113	
	West	22°	101		92
	"	29°	141		123
	So	-	17	17	
	W	14°	175		170
	"	18°	236		226
	"	12	93		81
	S	0	7	7	
	W	-	103		103
				542	904

304  
 114  
 ---  
 186  
 174  
 ---  
 12,

6

C. S. File No.

7/14

⑦

J.M. Yocum

Went to cor. 19-13-18-21

Found No cor. A B.O. stamp on  
Edge <sup>creek</sup> had "B.T" on it only  
sign could find.

I reset from this stamp.

Running N N 40 W 132° from stamp  
for cor. Put in stake Iron Pipe

Marked New B.T's.

12' B.O. N 70° W 68 <sup>3</sup>/<sub>4</sub> ft

12' W.O. S 72° W 25 <sup>9</sup>/<sub>16</sub> ft

18' W.O. N 42° E 72 <sup>5</sup>/<sub>16</sub> ft

12' W.O. S 69° E 250°

witness J. R. Bates

B Bates

J.M. Yocum

Ran (Needle Bearing) No sun - Snow

sec.  
cor.

0

9°

231 <sup>5</sup>/<sub>16</sub>

S0

~~S0~~

1

1° 47' R

20 <sup>1</sup>/<sub>2</sub>°

219°

S 30° W

S 10° 09' W

2

0 30' L

10°

126 <sup>6</sup>/<sub>16</sub>

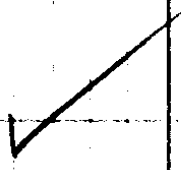
S 10° 30' W

S 0° 39' W  
S 10° 17' W

3

304  
27  
73

(8)



To put in later by B. Botes.

Transit line, Tacked line/

229°

205°

124°

559°

C. S. File No.

7/14

⑨ J. 17. Yocom - 19-30-5					
	1°42' R	6½°	296 <sup>2</sup>	S 3°10' W	S 0°39' W S 2°21' W
4	3°39' L	7°	66 <sup>5</sup>	S 0	S 1°18' E
5	2°51' L	0	231 <sup>8</sup>	S 3° E	S 4°09' E
6	2°13' R	25°	114 <sup>5</sup>	S 1°10' E	S 1°56' E
7	9°32' R	19°	146 <sup>8</sup>	S 8°30' W	S 7°36' W
8	5°57' L	0	67 <sup>3</sup>	S 2°20' W	S 1°39' W
9	6°58' L	15°	253 <sup>0</sup>	S 3°10' E	S 5°19' E
10	0°48' R	12°	215 <sup>5</sup>	S 4°25' E	S 4°31' E
11	1°26' R	16°	89 <sup>5</sup>	S 3°05' E	S 3°05' E
12	3°48' R	12°	178 <sup>5</sup>	S 1°05' W	S 0°43' W
13	0°29' R	0	85 <sup>9</sup>	S 1°30' W	S 1°12' W
14	4°36' L	9°	220 <sup>8</sup>	S 3°05' E	S 3°24' E
15					

294<sup>5</sup>

1173

596

749

2640  
2481  
-159

(10)

66<sup>0</sup>

231<sup>8</sup>

103<sup>8</sup>

138<sup>8</sup>

67<sup>3</sup>

244<sup>2</sup>

210<sup>8</sup>

86<sup>0</sup>

174<sup>5</sup>

85<sup>9</sup>

218<sup>2</sup>

1921<sup>8</sup>

~~581~~  
2280<sup>8</sup>

G. S. File No.

9/14

(11) J.M. yocum 177

S 3° 24' E

16 17° 37' R 7° 159<sup>8</sup> S 14° 30' W S 14° 13' W

(17)  
1/4 Cor. 150° 32' R 0 41<sup>2</sup> N 15° W N 15° 15' W

Found B.T. For 1/2 cor. B.O. Tree

1/4 19 824

Put in I.P. for cor. Marked New B.T.

30" Laurel S 43° E 25<sup>5</sup> ft

18" B.O. S 85° W 38<sup>5</sup>

Witness B. Bates

J.M. yocum

1/4 Cor (17) Cont Line East from 1/4 Cor (across Sec)

97° 05' R 82° 56' 130 101<sup>1</sup> N 82° E S 82° 02' E

18 11° 13' L 11° 285<sup>6</sup> N 71° E S 70° 49' W

19 12° 34' L 20° 292<sup>4</sup> N 61° 30' E S 59° 36' W

20 12° 01' L 23° 30' 266<sup>4</sup> N 46° E S 47° 02' W

21 20° 03' L 11° 299<sup>6</sup> N 76° E S 76° 59' W

22

154.13  
 150.32  
 174.045  
 164.55

(12)

158<sup>E</sup> (Temp.  $\frac{1}{4}$  Cor bet 19 & 23)

41<sup>2</sup> Solar. Dec. 19. Dec. 23° 24' 51"

10 A.M. = 6 P.M. Greenwich.

$3.39 \times 6 = 19^\circ$

Ref.  $\frac{23^\circ 25' 10''}{- 2 23} = 23^\circ 22' 47''$

2 P.M. =

$3.39 \times 10$

~~170 Sun~~

Ref.  $\frac{23^\circ 24' 51''}{2 23} = 23^\circ 22' 28'' \frac{39}{4}$

Co. Lat 47° 03'

2 P.M.

$\frac{23^\circ 23' 07''}{4}$

3 P.M.

$\frac{23^\circ 23' 11''}{- 55} = 23^\circ 22' 16''$

N 15° 15' W  
 97.05 R  
 $\frac{15.15}{81.50}$  E

98<sup>S</sup>

279<sup>B</sup>

275<sup>o</sup>

244<sup>4</sup>

293<sup>B</sup>

From Traverse as run, I  
 Compute length of section  
 from Sec Cor. 13-19-18-24  
 to  $\frac{1}{4}$  cor  $\frac{19}{24}$  as 2590.8 ft  
 and Bearing as S 0° 14' W.  
 (Magnetic)  
 Should be Due South.  
 Error of 0° 14' W.

C. S. File No. 7/14

(13)

23

69°35' R

13°

65°

S 84° E

S 26° 59' W

N 83° 26' W

24

1°11' R

0°

41°

S 83° E

N 82° 15' W

14

9°37' R

S 73° 40' E

N 72° 43' W

13

14

2°12' L

15

Starting hub #13

on river bar, carrying (Bearings)  
as run from East/A cor.

13

Center Sec  
Cor

141°30' L

0

116<sup>8</sup>

S 49° 30' E

N 86° 06' W

S 47° 36' E

78° 59'

North

+

2

21°52' R

0

225<sup>0</sup>  
225  
225  
220

894  
140<sup>9</sup>

North

N 22° 30' E

N 21° 52' E

3

15°43' E

225<sup>0</sup>  
67.6  
292.6

N 6° E

N 6° 10' E

+

11 55  
9 37  
2 18

224  
801  
1009

309  
71  
225

(19)

1430  
75  
67.6

634

9 37  
2 12  
11 59

410

347

Set center Section 19  
as follows. From Traverse  
as run from East 1/4 cor. To W  
1/4 cor. I find length thru sec  
to be 5753.2 ft. and Bearing S 89° 50' W.  
(Mag). I set center of sec. as follows

$$\frac{40.0 \text{ ch}}{82.47 \text{ ch}} \times 5753.2 = 2792.2 \text{ ft from East Boundary.}$$

Drove I.P. for cor. Marked Trees.

2.4" Pine S 79° E 75 ft

8" W. Oak N 78° E 103 ft

Corner Comes on Gravel Bar near  
So. Dimpua.

Witness for Corner

J.M. Yocum. B. Bates

V. (Mike) Weaver. J. Davenport.

C. S. File No. 714

(15)

472<sup>0</sup> North yet  
523 west

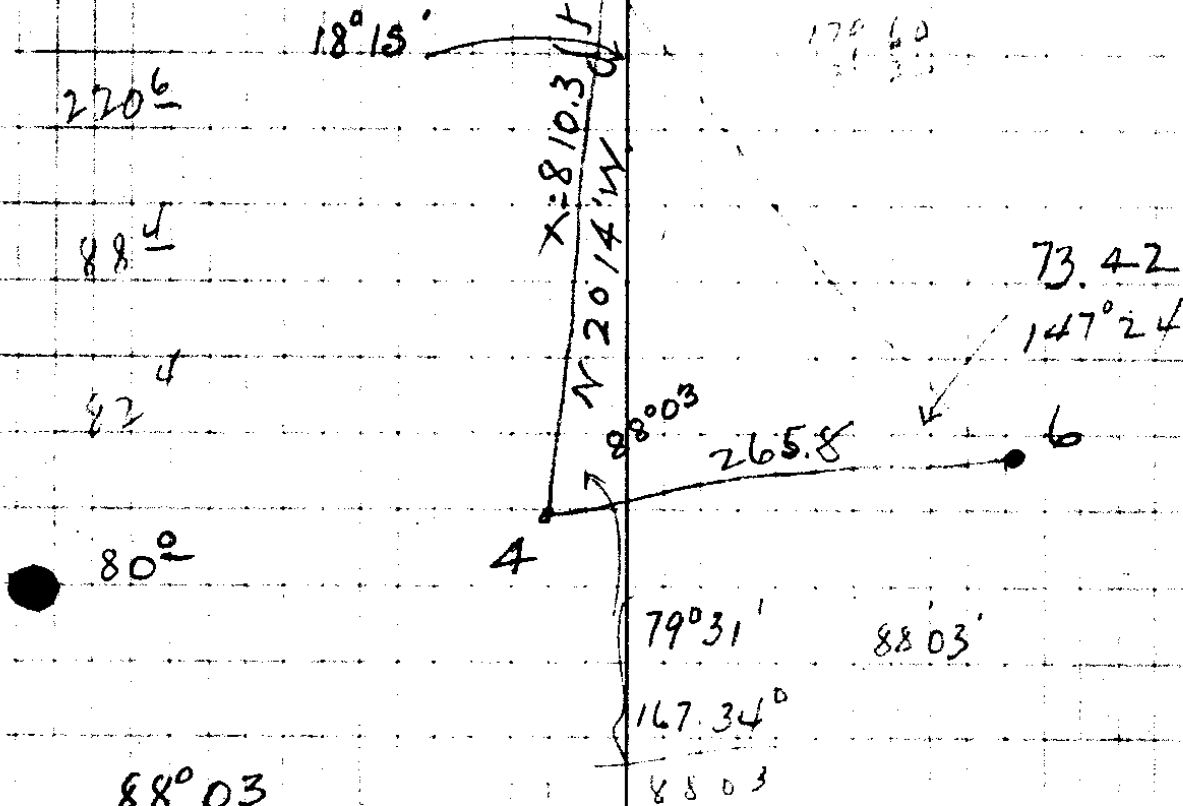


					N 6° 10' E
	8° 34' L		810 <sup>3</sup>	N 3° W	N 7° 14' W
5					
	79° 31' R				N 85° 41' E
6					
5 →	2° 30' L	12°	225 <sup>9</sup>	N 5° W	N 4° 44' W
7					
	2° 33' L	5°	88 <sup>2</sup>	N 7° 30' W	N 7° 17' W
8					
	10° 25' R	22	88 <sup>9</sup>	N 3° 30' E	N 3° 08' E
9					
↖	1° 47' R	7°	80 <sup>6</sup>	N 5° E	N 4° 55' E
10					
1/4 Cor	see below		74 <sup>1</sup>	N 18° 50' E	N 18° 45' E
Compute Dist & sec 19 to 1/4 cor			N 88° 52' E	2578 <sup>2</sup>	ft.
9 to 11	89° 03' L	19°	145 <sup>8</sup>	N 86° 5	N 88° 55' W
11					
	4° 36' L	26 <sup>1/2</sup>	170 <sup>9</sup>	S 89° 30' W	S 89° 29' W
12					
	0° 22' L	28°	124 <sup>9</sup>	S 89° W	S 89° 07' W
To Possible Cor.					

~~From #9 to Bat Hill 12° 456 ft~~  
 #9 site 10. Turn 13° 50' R to 1/4 cor 74<sup>1</sup> ft.  
 (N 18° 50' E Mag) = N 18° 45' E

T 30 S R SW  
Sec 19

across river



159 16

75°  
342      225.0  
          10.8  
-----  
          265.8

137<sup>8</sup>      88°03'  
          73°42'  
-----  
          161.45  
-----  
152.9    18°15'

$$\frac{x}{\sin 73^\circ 42'} = \frac{265.8}{\sin 18^\circ 15'}$$

$$x = \frac{265.8 \times 9548}{3132} = 810.3 \text{ ft}$$

110<sup>3</sup> Col - Marked  
Pointed out by  
Charles Moore

1/4  
2  
B.I.

18" B.O. Bears 1/6  
24" B.O. B A.B.

Wrong for distance  
size here, distance  
to top hill (378) ft +

style of scribe

C.S. File No. 7/14

① J. M. Yocum

Going East on No. line Sec 19

Dec. 28 1921

I went to Sec. Cor 18-19

13-24

B.S. # 1 hub on line So. N<sup>o</sup> 38 W

Cor

1	91° 32' R	5°	297 <sup>-</sup>	S 88° 10' E	S 89° 06' E
2	32° 36' L	-	107 <sup>9</sup>	N 59° E	N 58° 18' E
3	26° 51' R	10½°	292 <sup>-</sup>	N 85½° E	N 85° 09' E
4	10° 59' R	9°	172 <sup>3</sup>	S 84° E	S 83° 52' E
5	51° 21' L	5½°	138 <sup>7</sup>		N 44° 47' E
6	60° 46' R	7½°	277 <sup>5</sup>	S 74° 30' E	S 74° 27' E
7	4° 48' L	14°	298 <sup>-</sup>	S 79° E	S 79° 15' E
8	9° 44' L	13°	279 <sup>4</sup>	S 88° 50' E S 89° E	S 88° 59' E
9	8° 43' R	23° 40'	147 <sup>4</sup>	S 80° E	S 80° 16' E

(28)

296<sup>2</sup>

PL

107<sup>2</sup>

287<sup>2</sup>

170<sup>2</sup>

138<sup>2</sup>

274<sup>2</sup>

289<sup>3</sup>

272<sup>3</sup>

135<sup>2</sup>

*[Handwritten signature]*

① J. M. Yocom

9					S 80° 16' E
	5° 43' L	15°	141°	S 85° 40' E	S 85° 59' E
10					
	6° 30' L	30°	163°	N 88° E	N 87° 41' E
11					
	11° 29' R	0	45°	S 81° E	S 80° 50' E
12					
	9° 29' L	24°	220°	East	N 89° 41' E
13					
	14° 06' L	23½°	78°	N 76° E	N 75° 35' E
14					
	32½° R	36°	93°	approx	S 72° 10' E
<del>Dec. 29 - 1921</del>					
14					N 75° 35' E
					N 75° 35' E
	32° 12' R	0	75°	S 71° 40' E	S 72° 13' E
15					
	18° 28' L	30°	127°	N 89° E	N 89° 19' E
16					
	0° 22' R	0	152°	N 89° 30' E	N 89° 41' E
17					
	4° 36' R	-	137°	S 86° 30' E	S 85° 43' E
18					
	6° 31' L	28½°	80°	N 88° E	N 87° 46' E
19					

Dec. 29. Weather Fair.

136<sup>2</sup>

Yocum 1/2 day. (P.M.) Bill  
Weaver 1/2 day. (A.M.)

● Tophill

103<sup>2</sup>

45<sup>6</sup>  
Break - Tophill on E side ridge

201<sup>5</sup>

72<sup>2</sup>

75<sup>6</sup>

● To Temp'd cor as set from Blazed Trees  
Making course of S 89° 41' E 2536<sup>8</sup> ft  
to 1/4 cor as set from Blazed Tree.

This shows that this cor. is in error -  
being approx 420ft too far West.

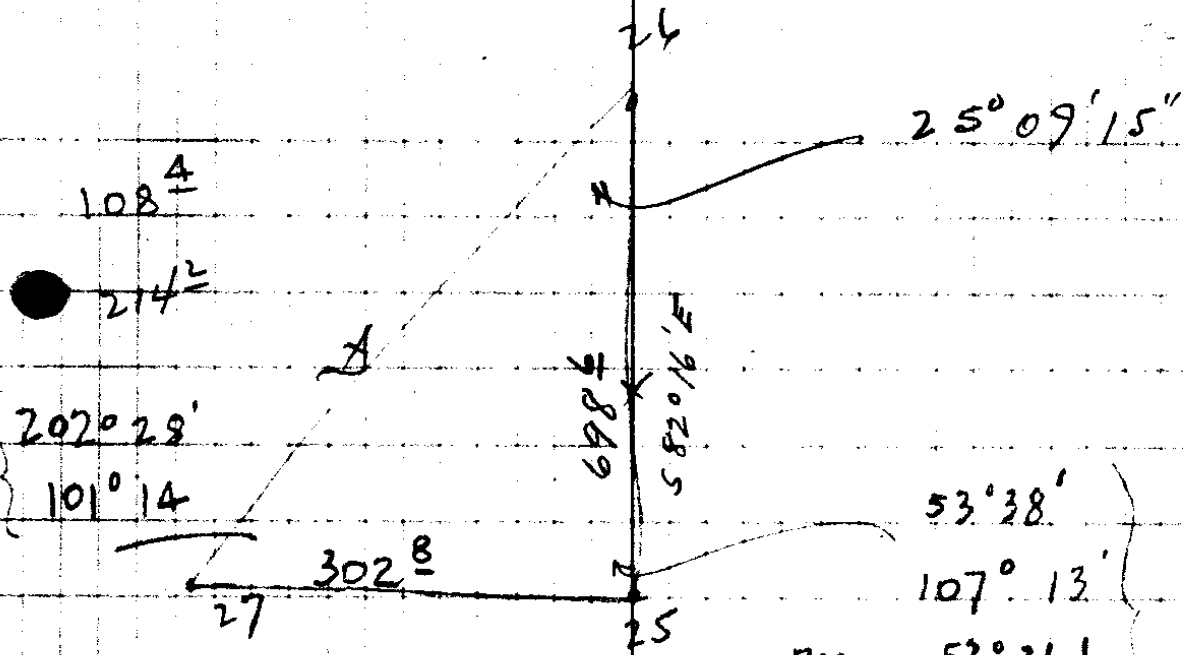
The trees were probably marked by  
private surveyor and no record kept.

I then continue line East  
to sec cor. 17-18-19-20.

70<sup>8</sup>

See Pg 25 for 1/4 cor 18/19

19	2°13' R	1130'	110 <sup>4</sup>	East	N 87°46' E	N 89°59' E
20	0°53' R	25'	236 <sup>3</sup>	"	S 89°09' E	
21	0°29' L	23½	(80°) 87 <sup>2</sup>	S 89° E	S 89°37' E	
22	1°10' L	-	295'	N 89°30' E	N 89°13' E	
23	0°05' L	-	552 <sup>±</sup>		N 89°08' E	
24	0° <del>7</del> 19' L	4°	201 <sup>7</sup>	N 88°10' E	N 88°49' E	
25	8°55' R	-	698 <sup>6</sup>	S 83°30' E	S 82°16' E	
26	10°01' L	29°	116 <sup>4</sup>	N 87°10' E	N 87°43' E	
28	0°44' R	25½	141 <sup>9</sup>	N 87°50' E	N 88°37' E	
29	13°52' R	22°	194 <sup>5</sup>	S 78°30' E	S 77°41' E	
30	32°39' L	13°	207 <sup>1</sup>	N 69° E	N 69°40' E	
31	56°47' L	-	89°	N 11°30' E	N 12°53' E	
32						



$\left\{ \begin{array}{l} 207^\circ 28' \\ 101^\circ 14' \end{array} \right.$

$\left. \begin{array}{l} 53^\circ 38' \\ 107^\circ 13' \end{array} \right\}$   
 Reverse  $53^\circ 36'$   
 Average =  $53^\circ 36' 45''$

$$\begin{array}{r} 101^\circ 14' \\ 53 \quad 36 \quad 45 \\ \hline 154^\circ 50' 45'' \\ \hline 25^\circ 09' 15'' \end{array}$$

$201^\circ$   

$$\frac{x}{\sin 101^\circ 14'} = \frac{302.8}{\sin 25^\circ 09' 15''}$$

$103^\circ$   

$$\frac{x}{.9808} = \frac{302.8}{.4251} = 698 \text{ E}$$

128°

180°

201°

To computed corner

C.S. File No. 7/14

(21)

dupe

Note 167° between Temp corners  
as run in from West & from South  
Divided distance and set sec. cor  
1/2 way between.

32

49°41' h

-

83°

N37°30'W

N12°53'E

N36°48'W

33 cor

To cor. as set. Approximately  
correct position for cor.

Set squared Dead Laurel Post  
for cor. 48" Fir N80°W 10° 18

16" Fir N28°E 31° 17

8" " S44°E 58° 20

8" " S20°W 35° 19

Corner was set in presence of  
Bill, & Vernon Weaver, J. M. Yocum  
M. Jones,

on West side ridge, about 200' from  
top.

No B.T.s could be found. 2 Days  
spent looking for Gopher and B.T.s.

● I compute position of Sec cor-  
17-18-19-20 as follows. <sup>dist thru section,</sup>

82.42 ch : 82.64 ch = 5753.2 : X  
(Average thro sec) (end length)

82.42 x = 475444.448

x = 5768.5 ft.

Coordinate hub #31 = East 5748.8 South 60°  
~~Set cor (temp cor) 19 1/2 East & 60° North~~  
~~of hub #31.~~

● Bearing of sec. line bet 18 & 19 is N 89° 30' E  
(Gov't notes)

Correction for Bearings of N 0° 14' E. as the  
line bearings were carried across from  
West side Sec. 19. (see pg. 12).

5768.5 for 0° 14' = 23 1/2 ft North. Making  
Correct coord #31 hub E. 5794.3; 506.4 So.  
from N.W. cor sec 19.

Approx. Coord. of Cor 17-18-19-20, should

● be 5768.5 East & 50.3 North,  
~~Set temp sec cor. 25 1/2 West & 86 1/2 North~~

From Traverse as run, I compute

North line Sec. 19 to be 5 ft N 89° 04' E

(Mag.)

(23)

J. M. Jocum.

Start at 1/4 Cor North - (Mag. No sun) 19 - 20 + run

		0	157'	N63°0'W	N0°32'W
1	44°20'L	-	286'	N44°30'W	N44°52'W
2	4°39'L	-	220 <sup>8</sup>	N49°30'W	N49°31'W
3	58°25'R		235 255 155 95 1012	N9°0'E	N8°54'E
4	17°13'R	7°	165'	N26°10'E	N26°07'E
5	1°18'R	11°	174 <sup>3</sup>	N28°E	N27°25'E
6	25°38'L	25°	273 <sup>8</sup>	N1°15'W	N1°47'E
7	3°49'L	22 <sup>30</sup>	208°	N3°10'W	N2°02'W
8	0°25'L	18°20'	137 <sup>3</sup>	N44°0'W	N2°27'W
9	38°17'R	1 <sup>30</sup>	293 <sup>3</sup>	N34°30'E	N35°50'E
10	56°58'L	11 <sup>30</sup>	90 <sup>2</sup>		N21°08'W
11	"	25°	106 <sup>1</sup>		
		P	28°		

Tie To sec cor

11

36° 43 R

0° 38' ± N 15° 35' E

12 (sec cor)

(Set of sec Cor. Site # 11)

Mag. bear is S 15° 35' W

(Compute Δ)

841<sup>2</sup>

163<sup>2</sup>

171<sup>2</sup>

247<sup>2</sup>

194<sup>2</sup>

130<sup>5</sup>

293<sup>2</sup>

88<sup>2</sup>  
96<sup>5</sup>  
184<sup>9</sup>  
28

From Traverse as run I  
Compute length + Bearing of  
course from 1/4 cor  $\frac{12}{20}$  to  $\frac{17-18}{19-20}$   
as N 1° 13' E 25.62.2 ft.  
(Mag. netic) No sun.

C. S. File No.

7/14

(25)

J.M. Yocum

1/4 Cor Set as follows

Set at hub\* 18 B.S. 17 hub. Turn

L of  $104^{\circ} 23'$  Right run  $74'$ . Put  
in I. Pipe. Marked New B.T.

Making position of 1/4 Cor  $18'$  as  
 $N 89^{\circ} 04' E$   $29.50'$  from sec  $\left. \begin{matrix} 13-18 \\ 19-24 \end{matrix} \right\}$ .

see Back Court sheet No V

18" B.O.  $N 84^{\circ} E$   $6'$

10' laurel  $S 36^{\circ} W$   $38'$

Set in Presence

Vernon Weaver - Bill Weaver

J.M. Yocum - M. Jones. Dec 29 1921

Chained from cor. East to bot. of  
hill. found to be 496. ft.

Gov't. Notes call for 501 ft.

105  
72  
28

C. S. File No. 7/14

	34°27' L	-	70°	21°02' North	N 35°50' E N 1°23' E
✓	14°17' R	4°	249 $\frac{6}{-}$	N 14°10' E	N 15°40' E
13	17°50' L	<del>4°</del>	211°	N 30° W	N 2°10' W
14	35°33' R	-	48°	N 32½° E	N 33°23' E
15	0°25' W	3°	187 $\frac{1}{-}$		N 37°58' E
16	14°58' W	28°35'	231 $\frac{2}{-}$	N 16° E	N 18° E
17	16°48' W	15°	169°	N 1½° E	N 1°12' E
Base line	69°56' L	27°50'	223 $\frac{5}{-}$	N 69½° W	N 68°44' W
18				<del>*</del>	
Site 18					N 4°46' W
20	37°31' W	17½°	209 $\frac{0}{42}$	N 43° W	N 42°17' W
21	1°0' W	19½°	188 $\frac{2}{108}$		N 43°17' W
22	14°08' L	19¾°	171 $\frac{1}{10}$	N 59° W	N 57°25' W

283  
213

203  
153  
48

198  
29  
169

# 19 is wire on top ridge

70°

249°

211°

48°

187°

203°

163°

198°

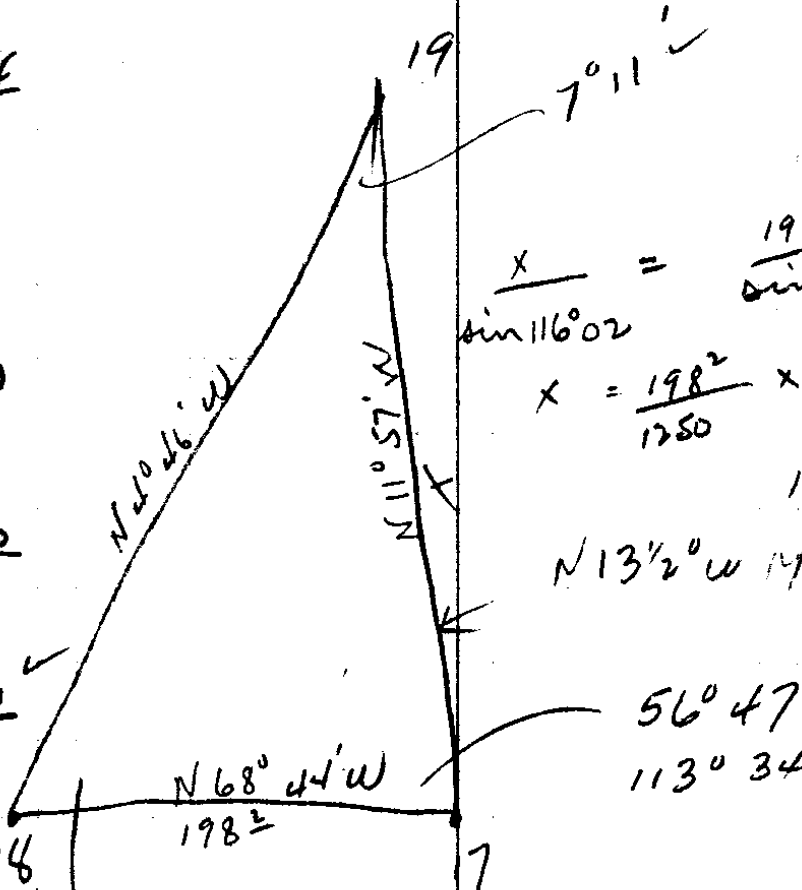
199°

177°

161°

C.S. File No.

7/14



$$\frac{x}{\sin 116^{\circ} 02'} = \frac{198^2}{\sin 7^{\circ} 11'}$$

$$x = \frac{198^2}{1250} \times \frac{\sin 63^{\circ} 58'}{8985}$$

14282 ft

N 13 1/2° W Mag

56° 47'  
113° 34'

N 35° 50' E  
3427  
N 102° 36'  
1417  
1750  
1540  
3530

11602  
6844  
18446  
180  
146  
1800  
112  
6956  
112  
6844  
5647  
116-02  
5657  
17249  
71

1800  
1648  
112  
112  
6844  
5647  
11.57

3323  
25  
3258  
1458  
18

B

	5°58 L	3'w	253 $\frac{2}{67}$		N 57°25' W N 63°23' W
23	20°32' R	16'w	109 $\frac{8}{45}$	N 44° W	N 42°51' W
24	23°44' R	-	131 $\frac{3}{-}$	N 20° W	N 19°07' W
25	19°28' R	-	105°	-	N 0°21' E
26	0°02' L	17°	300° 110° 48	N 10° W	N 0°19' E
27	25°41' R	4'w	300°	N 76° E	N 76° E
28	14°58' R	-	273° 282°	N 40° E	N 40°58' E
29	19°36' L	-	295° 60°		N 21 22 E
30	2°08' L		300°	N 18°2° E	N 19°14' E
31	3°11' R	17°	274 $\frac{7}{126}$		N 22 25 E
	17°22 R	6°	262 $\frac{5}{11}$	N 39° E	N 39 47 E
	46°10 L	13°	111 $\frac{7}{24}$		N 6°23 W

Con

246<sup>5</sup>

105<sup>3</sup>

131<sup>3</sup>

✓ 105<sup>2</sup>

{ 300<sup>1</sup>  
105<sup>2</sup> ✓

301<sup>1</sup>

555<sup>1</sup>

355<sup>1</sup>

300<sup>2</sup>

162<sup>1</sup>

✓ 261<sup>1</sup>

108<sup>8</sup> COR 7-8  
17-18

118  
32  
1098

300  
27  
273

C

~~I go To Sec 16-17-20-21~~  
where I find O.B.T. in Sec

21 36° 30. S 73° E 499 ft.

Faced blaze.

Put Iron Pipe.

Marked a 18" O.O. N 84° E 587° True Bear

Wrong, Notes in error.

{ A.L. Dubell; F.C. Harmon  
J.M. Yocum witness

4703

Lat 42° 57' April 12

10 AM Dec. 8° 29' 41"

6 hrs 55 3.30 8° 33' 11"

Ref 42

8 33 53

Var = 21° 49'

Base line = S 6° 07' W

Sec cor Bears S 19½° W, 16½ ft

Set C. B. S # 1 Mag 587½° N 87° 15' W

C

19° 44' 12½ 121½ 573° 10' W N 72° 51' E

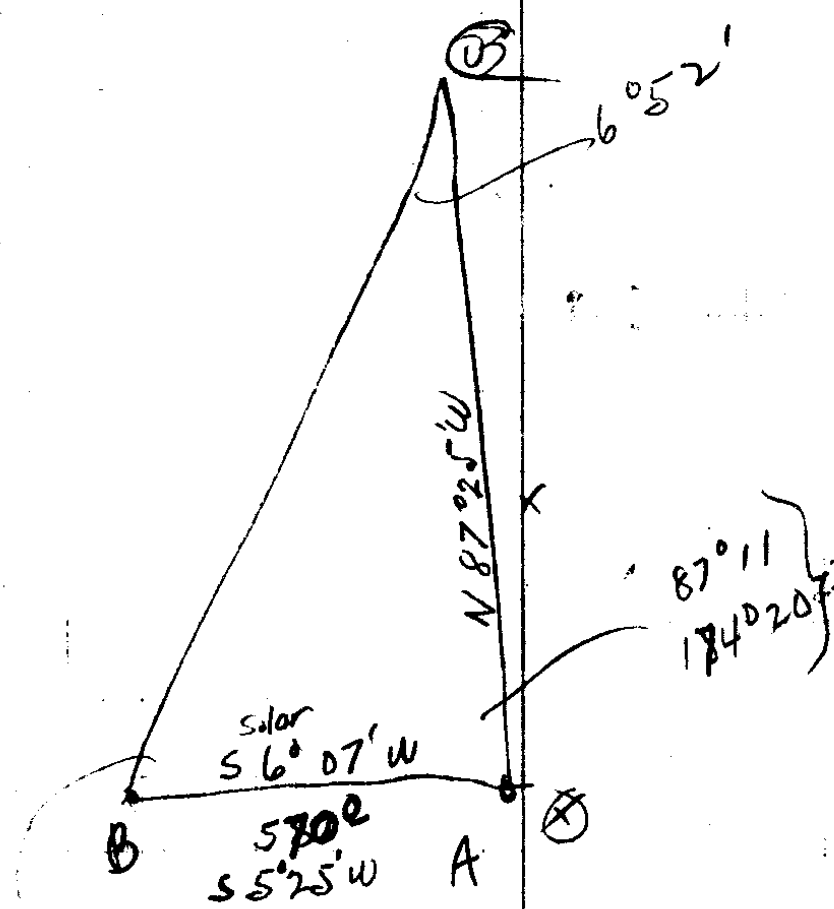
1

6° 14' R 7° 52½ 579° W N 79° 05' E

2

$$\begin{array}{r} 2994 \\ 178 \\ \hline 1210 \\ 177 \\ 119 \\ \hline 58 \end{array}$$

W



$85^{\circ} 58'$   
 $171^{\circ} 55'$

$$\frac{x}{\sin 85^{\circ} 58'} = \frac{570}{\sin 6^{\circ} 52'}$$

$$x = \frac{570}{1196} \times 9975 = 4753^{\circ} \text{ ft}$$

D

39° 48' L 11° 198<sup>5</sup> S39° 2' W N39° 17' E

# 31 dd. 30' 16' L 19 1/2 53° S36° W N36° 01' E

30 33° 39' L S76° W N69° 40' E

Set sec Cor com. to  
17-18-19-20 at Intersec. of  
lines. Run. Put galv. I.P.  
Marked with 18" Fir S51° W 17 ft. 19  
12" Fir N27 1/2° W 21 3/4 ft  
18" Fir N13° E 34°  
20" Fir S29° E 36°

Vernon Weaver.

J.M. Joacum, F.C. Harmon Witnesses

From Cor as Set

# 10 hub S74° W 16°  
# 31 hub S19 1/2° W 34°

1948

492

C. S. File No.

7/14

E

Set 1" I.P. for  $\frac{1}{4}$  cor

Marked &

8" Fir S  $20^{\circ}$  W

74 ft

36" B.O N  $47\frac{1}{2}^{\circ}$  W

45 ft

W.S. Crear: J. M. Yocum.

omit

C. S. File No.

7/14

J.R. Yocum. - Ed Weaver.

19 - 30S R 5W Jan. 3rd.

It was decided to estab. West line of D.L.C # 43 and to allow this line to decide ownership of gravel Pit in question between J.R. Yocum & Ed Weaver.

offset 79<sup>5</sup> No.

Run from 1/16 cor on Cl. Line

Var. 22°30' West 275° #

300  
300  
237

+ 87

1199

offset 79<sup>5</sup> So

1112  
87

1199.  
78

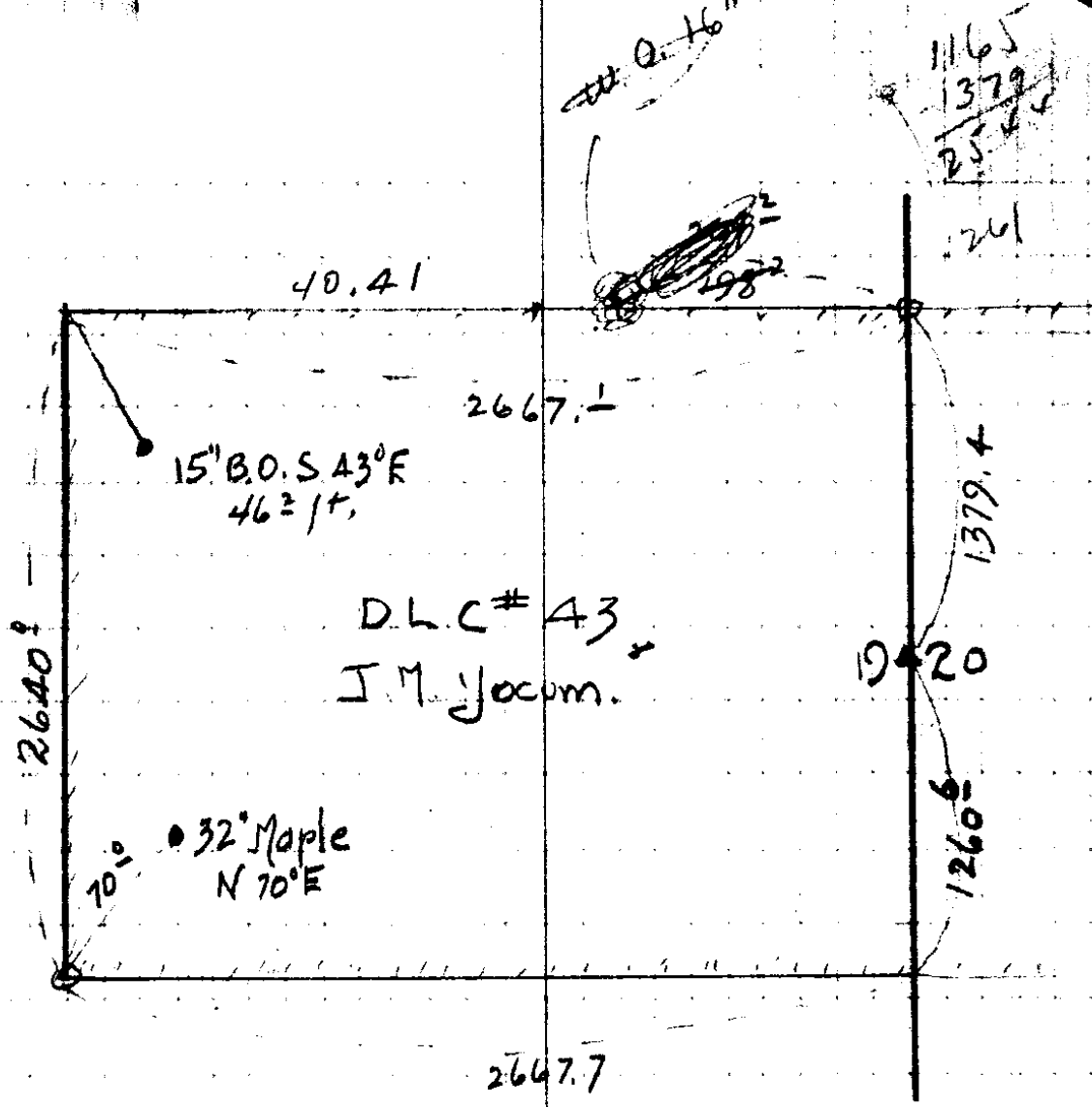
1277 - D.L. Cor #43

+ 45

45  
23

1390<sup>2</sup> 1/16 cor

Both corners are East of gravel Pit in question. Vernon W<sup>m</sup> Weaver, J.R. Yocum present. Gave Yocum a statement to effect that gravel was on his land. - Jan. 3, 1922.



C. S. File No. 7/14



C. S. File No. 7/14

4  
23  
27.2

30 hub N18°12' 197<sup>5</sup>

STK

N1°09' E 116<sup>6</sup>

44<sup>5</sup>

To

STK set as per sec

From Cor as set for Sec

# 30 hub is East 292<sup>5</sup> @ 27<sup>1</sup>/<sub>2</sub> = 259<sup>5</sup>

Weaver - Moore

Final Setting Sec. Jan 21 - 1923

# 30 hub

S130<sup>8</sup> N E 5605<sup>9</sup>

N18°12' W 197<sup>5</sup>

187<sup>6</sup>

W 61<sup>7</sup>

N1°09' E 116<sup>6</sup>

116<sup>6</sup>

2<sup>3</sup>

Move st 23 West

130<sup>8</sup>

304<sup>7</sup>

5607<sup>3</sup>

W 61<sup>7</sup>

130<sup>8</sup>

61<sup>7</sup>

Coord Cor. E+W line

N173<sup>4</sup>

5545<sup>6</sup>

Bearing to N88°13' E length

N.R. So. line

# 23 hub Cor.

5296<sup>4</sup>

W 200<sup>0</sup>

Bearing N 85°04' E

156

W 259<sup>5</sup>

W 459<sup>5</sup>

M + 50 June

Sec. Corner.

Set # 23 hub. go S  $38^{\circ} 52' E$  72.7 ft  
for Temp corner.

Set 23 site 2

$57^{\circ} 25' W$   
 $38^{\circ} 52'$   

---

 $46 17$  left

Weaver. Sec. Cor.  $\frac{17-18}{19-20}$

On N+S line

Set #13 hub is  $N 2963 \frac{4}{4}$  go  $\frac{S 436}{W 392} = S 420' W$   
 $E 1374$

site 12 =  $N 33^{\circ} 23' E$  Turn  $8^{\circ} 37'$  Right

Temp cor

go  $58^{\circ}$  ft.

then site  $N 1^{\circ} 09' E$  + set straddle hubs

On E+W line.

#30 hub is  $E 5605^{\circ}$  cor. is  $S 5543^{\circ}$   
 $S 130^{\circ}$  N 56.8

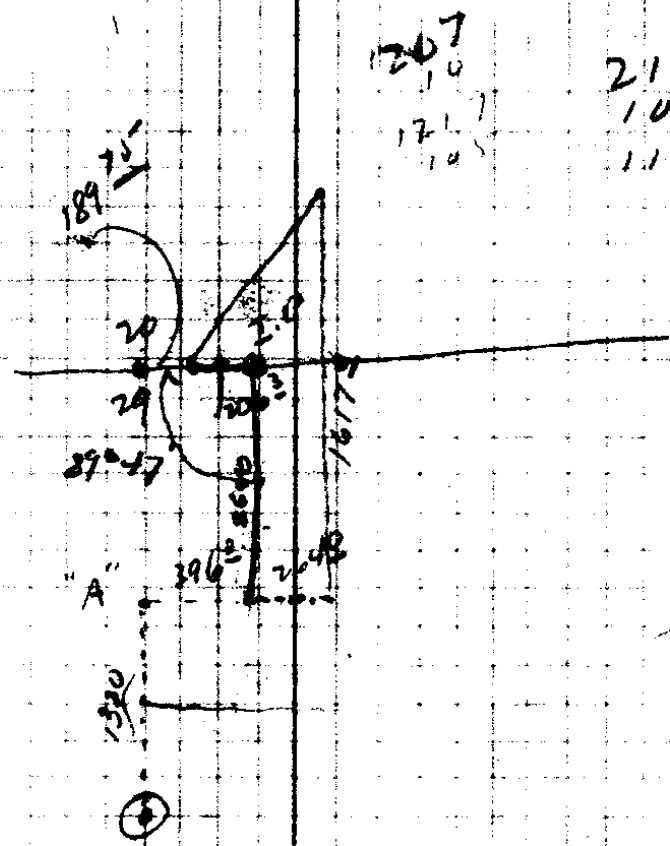
go  $\frac{W 61^{\circ}}{N 187^{\circ}} = 3.04$  N  $18^{\circ} 12' W$   
1975

site 19 =  $N 37^{\circ} 41' W$  Turn Rt.  $59^{\circ} 29'$  1975/1975

then site  $N 89^{\circ} 25' E$  for straddle hubs

X given sec  $\frac{17-18}{19-20}$  cor.

Tie in to line going No. for  
~~then~~ traverse



207  
10  
171  
105

219  
105  
114

16  
16  
8  
96  
5  
26  
206  
189  
396

EOR. a. Pipe

12" Cherry Tie C N 46° W 170

20  
10  
100

18 x 2

4176  
3206  
25056  
3520  
8528  
12528  
13318  
13311

75.5  
35.5  
36.2  
21.5  
168.4  
1341.0  
302.5  
5.07  
3

G.S. File No. 7/14

T 30 S R 5 W  
So on West side 18

40° " 10

W.O. 12" N 80° E 17  
8" S 30° W 11

74.50 W.O. 15"

80° 13, 18, 19, 24

B.O. 10" S 40° E 200

" 10" N 62° E 264

" 16 N 09° W 475

" 12 N 85° W 50

7-12-13-18

12" B.O. N 70° E 70

15" " N 60° E 60

W.O. 24 N 55° W 52

" 30" N 60° W 40

17  
1050  
1350  
1150

11  
6  
650  
750

380  
30

120  
100

C. S. File No. 74

T 30 S R 5 W

Weaver 8 Moore

Start SF Cor Sec. 8

Cor

15° 300°  
13 1/2 206° South South

1 4° 28' R 9° 05' 14° 152' S 4 1/2 W S 4° 32' 1/2 W

2 5° 44' L 11° 15' 29° 276' S 1 1/2 E S 1° 05' E

3 0° 35' R 1° 20' 12 1/2 111' S 0° 25' E

4 0° 10' L 0° 12' - 102' S 0° 35' E S 0° 31' E

5 0° 02' R 0° 14' - 214' S 0° 05' E S 0° 24' E

6 1° 32' R 3° 16' 16° 70' 255' S 1° 14' W

7 3° 20' R 6° 27' 16 1/2 106' S 2° 70' E S 1° 59' 1/2 E

8 2° 41' R 5° 31' - 138' S S 0° 46' W

9 5° 56' L 11° 39' 17 1/2 57' S 6° E S 5° 03' 1/2 E

10 2° 23' R 4° 58' 32° 75' 128' S 3° 40' E S 2° 34' 1/2 E

11

292<sup>3</sup> }  
201<sup>0</sup> }

147<sup>6</sup>

241<sup>9</sup>

108<sup>4</sup>

102<sup>8</sup>

214<sup>1</sup>

245<sup>1</sup>

102<sup>1</sup>

138<sup>3</sup>

55<sup>0</sup>

108<sup>1</sup>  
-----  
1956<sup>7</sup>

Tie To 1/4 cor bet 17 & 18

16 hub site 17

Turn 85° 29' R 168° 40'  
588° 20' W

G.S. File No.

2/14

Solar. Vor 21° 37'

11	0° 14' L 0° 15' L	38 1/2	248 <sup>3</sup>		S 2° 34 1/2 E S 2° 42 E
12	6° 10' R 12° 03'	24 1/2	232 <sup>0</sup>	S 6° 45' W	S 3° 35' W ✓
13	3° 33' R 7° 17'	-	123 <sup>6</sup>		S 7° 13 1/2 W ✓
14	6° 17' R 12° 45'	-	68 <sup>4</sup>	S 12 1/2 W	S 13° 36' W ✓
15	2° 32' R 5° 14'	7°	98 <sup>2</sup>		S 16° 13' W ✓
16	13° 29' L 26° 44'	-	65 <sup>6</sup>	2° W	S 2° 51' W ✓
17	17° 36' L 35° 05'	11 1/2	139 <sup>2</sup>	S 15° E	S 11 1/2 E ✓
18	10° 31' R 21° N	-	33 <sup>6</sup>		<del>S 12° 41' E</del>
19	0° 27' L 0° 43'		58 <sup>4</sup>	5	<del>S 12° 11' E</del>
20	set 20 sit c A 114° 05' L 228 24				S 12° 31' W N 78° 19' E
B					
20	2° 21' R 4° 30'		1515 <sup>2</sup>	S 14° 30' W	S 14° 47' W
21					



21	22°08' N 44°26'	-	658	S8°15' E	S14°47' W S7°26' E
22	16°48' W 33°45'	9 1/2	282 <sup>0</sup> <sub>9</sub>	S75° E	S74°18' 2 E
23	31°50' R 63°28'	14°	187 <sup>1</sup> <sub>5</sub>	S7 W	S7°25' 2 W
24	40°03' L 80°15'	13 1/2	100 <sup>7</sup> <sub>4</sub>		S32°42' E
Old line #11	348°15' L 696°38'			N22°05' W	S52°10' 8'

Go to 1/4 cor. Bet 18+13  
 Find 7 O.B.T's, which do not  
 check with angle between by  
 5° when distances are run out  
 Remarked one O.B.T., set stick  
 cor.

1	10°29' L 21°00'	17 1/2	214°	S71°4 E	S79°15' 6
2	0°52' R 144	17 N	125'		S88°53' E

278<sup>1</sup>

181<sup>5</sup>

97<sup>9</sup>

= N21°08' W

65<sup>2</sup>

201<sup>2</sup> ✓

119<sup>5</sup>

207<sup>1</sup>

300  
18  
282

60  
23°22'  
38

298  
229  
69

3	8°31' R 16°58'	-	82'		S80°23' E
4	6°37' L 13°17'	10°	202'		S87°02' E
5	195' L	-	99'	S88°45' E	S88°07' E
6	R 2° 0' L	-	124'	S86° E	S85°37' E
7	65' L	-	75'		N87°33' E
8	5°04' R	2 1/2	76'		S87°23' E
9	1°20' R	20°	128'	S86° E	S86°03' E
10	7°10' L 14°20'	18°	55'		N86°47' E
11	5°46' W 1°30'	23 1/2	194'		N86°02' E
12	8°41' R 17°22'	14°	90'	S85 1/2 E	S85°17' E
13	5°23' W 10°47'	31°15'	140'		N89°19' E
14	OR 3°25' R 2°50'	27°	700'	S88° E	S87°15' E
15					

82<sup>+</sup>

1998

74<sup>3</sup>

120<sup>4</sup> ✓

52<sup>4</sup>

178<sup>2</sup>

88<sup>2</sup>

1199 ✓

178<sup>2</sup>

15  
 7°22' L  
 140° 24'      28°      140°  
 587°15' 1/2 E  
 N85°22' 1/2 E

16  
 13°36' W  
 27°13'      461' 5"      N71° E      N71°46' E

17  
 30°33' R  
 61°06'      900°      578° E      577°41' E

18  
 94°07' L  
 188°13'      929      N7 1/2° E      N8°12' 1/2 E

19  
 353°18' R  
 706°37'      2°      237'      South      S1°30' W ✓

20

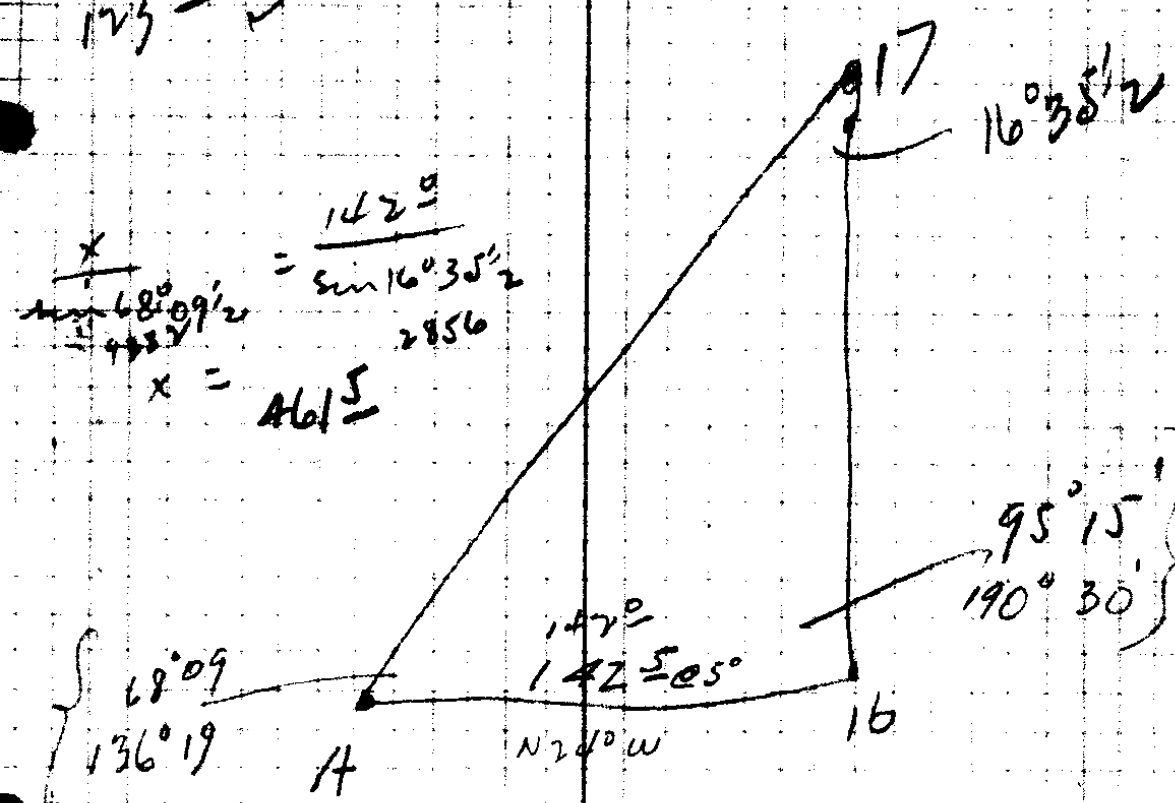
157°22' W      29 3/4      110°  
 126 8      563' 1/2 E      S85°08' E  
 N62°30' W

66°10' R      40      250      N2° E      N30°40' E

1/4 cor

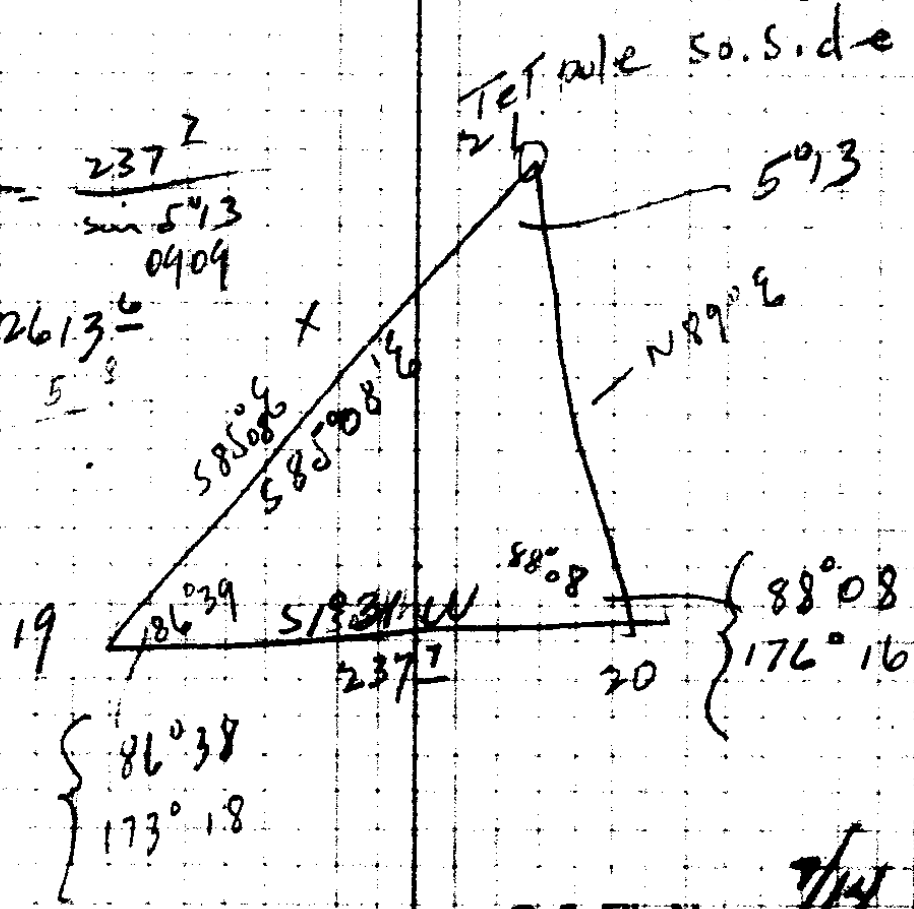
8° W D. Area S 28° W

7-14



$$\frac{19-21}{\sin 88^{\circ} 08'} = \frac{237.7}{\sin 5^{\circ} 13'}$$

$$x = 2613.6$$





CS FILE FOLDER

CONTAINS

MORE

INFORMATION