

MAP OF

SUB-DIVISION of SEC. 5-T.30S-R.5W-W.M.

DOUGLAS COUNTY, - OREGON.

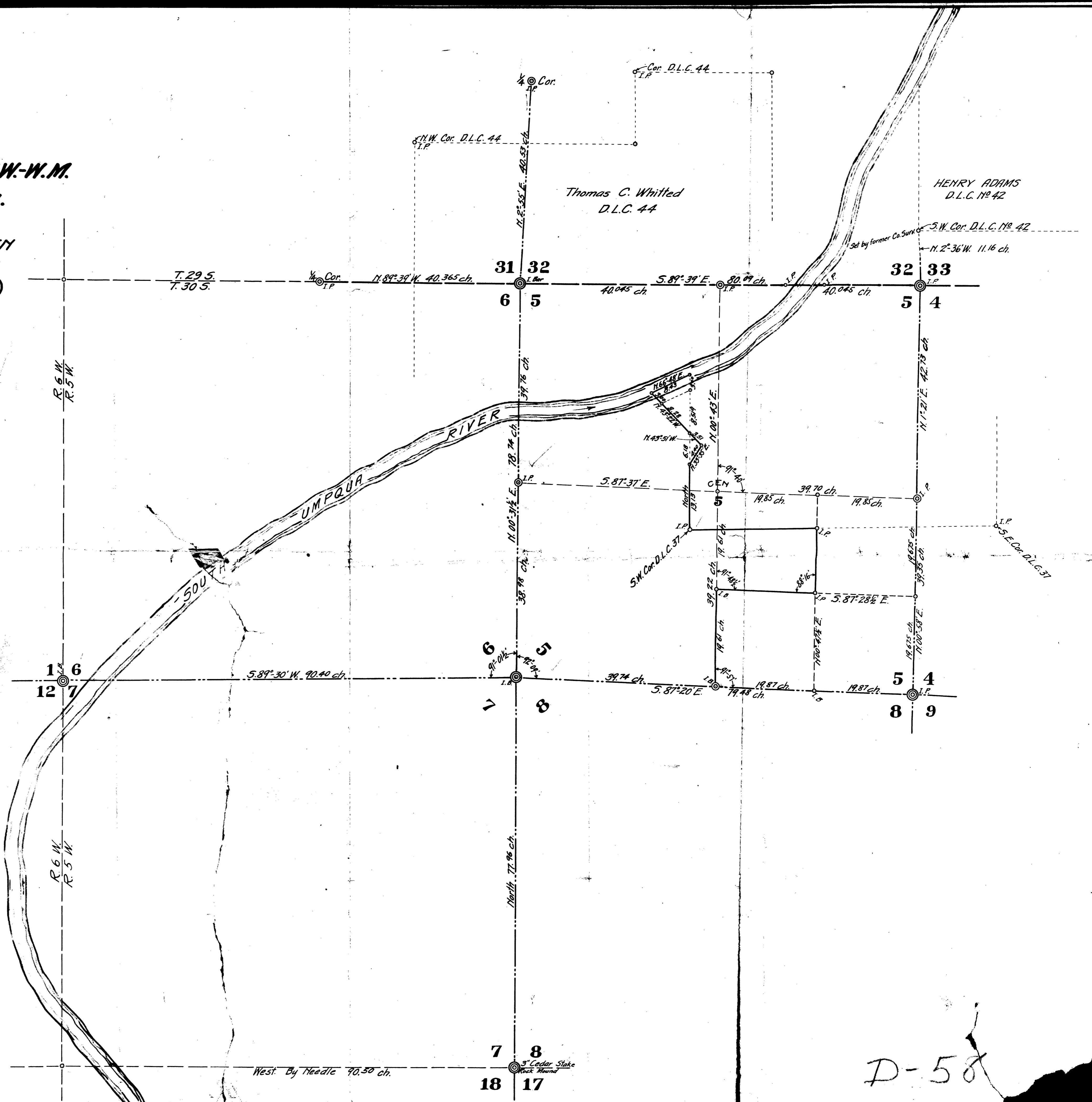
AND

ESTABLISHMENT OF LINES BETWEEN THE ESTATES OF JOHN R. WEAVER AND WILLIAM WEAVER (Deceased)

Surveyed by M.B. Germond C.E. Co. Surveyor Feb. 1918.



Scale 1 inch = 10 chains



D-58

CS FILE FOLDER

CONTAINS

MORE

INFORMATION