

C. S. File No.

6/48

Sta	Dist	L.A.	R.A.	Computed
13 63 ²	63 ¹ ✓	1 ⁰ -54		4 ⁰ 6 S 4 ¹ E
Δ12 +17° 159 ⁹	158 ⁷ ✓	0 ⁰ -58 →		52 ⁰ 12E S 1 ⁰ -30E
Δ11 +20 ⁰⁰ 153 ⁰⁰	143 ⁰⁰ ✓	3 ⁰ -21'		S P-14E S 1 ⁰ -30E
Δ10 +14 201 ³	195 ³ ✓		3 ⁰ -00	S 2 ⁰ 07W South
Δ9 3 ⁰ 196 ⁹	196 ⁶ ✓	1 ⁰ -05		S 0-53E S 1 ⁰ -30E
Δ8	85 ⁷		0-25'	S 0-12W S 1 ⁰ -2
Δ7 +14 ³⁰ 112 ³	109 ¹ ✓	0 ⁰ -48'		S 0-13E S 2-30E
Δ6 +21 ⁰ 272 ⁷	190 ⁹ ✓		0 ⁰ -28'	S 0 ⁰ -35W S 0-30E
Δ5 +13-30 214 ⁹	209 ⁰ ✓	0 ⁰ -10'		S 0-07W S 0 ⁰ -15E
Δ4 +14-20 176 ²	170 ⁵ ✓		1 ⁰ -04'	S 0-17W S 0 ⁰ -30W
Δ3 +12-15 297 ⁸	294 ¹ ✓	20 ⁰ -17		S 0 ⁰ -47E S 5 ⁰ -E
Δ2	13 ⁸			S 19-30W S 17-30W
Δ1 Cov Six				

NOV 17 1926 2

Cloudy

G. B. Nichols Chain

G. A. Fitzpatrick CX

J. W. " Red Flag

170-5

1 1/2" Pipe for cover
in place 3' old in
Evidence Name N. W. SE

17 18 SE Tree Scribe make
5 17 P. pair
Marked New Tree
8 W. O. 1 1/4" Bears 5 W. O. - 163 2/2

C. S. File No. 6148

A R

$\Delta 25$ 20-30 111 ⁴	107 ² ✓	12 ⁰ -30	516 ⁵ ✓ 513E
$\Delta 24$ 30-30 278 ²	256 ⁸ ✓	12-30	54 ¹ -24E
$\Delta 23$ 387	14 ⁰ -12 ¹	52 ¹ -46E	51 ⁰ E
$\frac{1}{4}$ cov let by one on	267	5 ⁰ -00	511 ¹ -26W
$\Delta 21$	153 ³	1 ⁰ -58	56 ¹ -25W
$\Delta 20$	77 ⁵	1 ⁰ -29	58 ¹ -24W
$\Delta 19$ 19-45 90 ⁸	89 ⁵ ✓	3 ⁰ -16 ¹	59 ¹ -53W
$\Delta 18$ 3 ⁰ 113E	114 ⁸ ✓	0 ⁰ -39 ¹	56 ⁰ -37W
$\Delta 17$ 6 ⁰ -20 141 ²	147 ⁰ ✓	7 ⁰ -43	55 ¹ -58W
$\Delta 16$ 32-30 208 ²	175 ² 176 ⁰	0-9 ¹	51 ¹ -45E
$\Delta 15$ 38-30 196 ¹	151 ³ ✓	7 ⁰ -25	51 ⁰ 54E
$\Delta 14$ 28-20 157 ¹	139 ³ ✓	5 ⁰ -13	59 ⁰ -19E
$\Delta 13$			59-30E

Yours truly
of Student Note & Edwain
Testimony

$\Delta 38$	380	16°-46'
+15° 222	214.9	3°-02'
$\Delta 37$		
-6° 227	226.0	5°-30'
$\Delta 36$		
+6° 74	744	0°-06'
$\Delta 35$		
+22°-30 171	158	8°-33'
$\Delta 34$		
+13°-30 137	134	
$\Delta 33$		
+24° 115	105.9	
$\Delta 32$		
+11°-30 291	285.2	
$\Delta 31$		
+29° 183	160	2-09'
$\Delta 30$		
	131.9	13°-11'
$\Delta 29$		
+4° 193	193.0	
$\Delta 28$		
10° 216	211.7	2°-43'
$\Delta 27$		
	111.3	15°-44'
$\Delta 26$		
+9° 97	96.6	
$\Delta 25$		

A. R. 517-52E 520E
 51-06E 52-30E
 51-56W S
 57-26W 56°W
 57-32W 5-30W
 2°-40' S 16-05W 51-30W
 0°-19' S 13-25W 512-30W
 18°-36 S 13-06W 511W
 55-30E 57E
 53-21E 55E
 18°-26' S 9-50W 511W
 58-36E 58E
 55°-53E 53E
 26-45 59-51W 511-30W

4

C. S. File No.

6/48

Δ 5 S
20-45 2035

190.3

3L

4R

. 4 .

6°-59' S12-15W S13°54'W

Δ 4 S
17-45 686

65.3

9°-06'

S5W

S6°55'W

Δ 3 S
22-15 1385

128.2

5°-26'

S13-30W

S16°-01W

Δ 2 S

18 2599

246.3

7°-46'

S7-30W

S10°35'W

Δ 1 S

117.6

20-41

S0-30W

S2°49'W

Δ 10
11-10 1930

S17°52'W

Δ 38 km North

76°-18

N20W

N17°52'W

Com 17-18
19-20

28° 66

10-25

S84W

S85°50'W

Δ 4

435

28-21

S82-30W

S84-25W

Δ 3

653

5°-08

S54-30W

S56-04W

Δ 2

0°

2866

40°-54'

S49-30W

S50°36'W

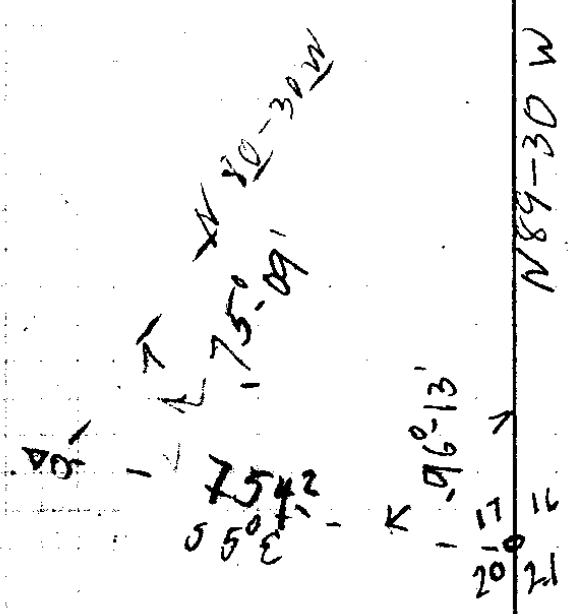
Δ 1

4856.5

N89-30W

N88-30W

Com 16-17
20-21



00503

9613
1309
244
860
10

C. S. File No. 6/48

		4 L	* Rt	3
$\Delta 2W$ 28° 120°	106.0		3° 14	N 71W N 77-13W
$\Delta 1W$ 24 229° cov 17-18 19-20	202.4			N 82W N 80-27W
4 38 N		XX		
1/4 cov ¹⁹ ₂₀	979	27°-15'		S 41-30E S 41-07E
$\Delta 135$	309.6		2°-58'	S 14-30E S 13° 52 E
$\Delta 125$	272.3	20°-55'		S 17-30E S 16° 50E
$\Delta 115$ 4 261°	261.0	1°-14'		S 3 W S 4° 05W
$\Delta 105$	216.2	7°-51'		S 6 W S 5° 19'W
$\Delta 95$ 8 296°	293.7	24°-06'		S 11 W S 13° 10' W
$\Delta 85$ 85 103°	102.7		30°-07'	S 36 W S 37-16W
$\Delta 75$ 12-30 137°	134.0	6°-19'		S 7 W S 7° 09W
$\Delta 65$ 30-30 119°	103.0	0-26'		S 12 W S 13° 28' W
$\Delta 55$				

01 W
62-35
P 38N

0 cur 17-18
19-20

Δ 50 P 50/

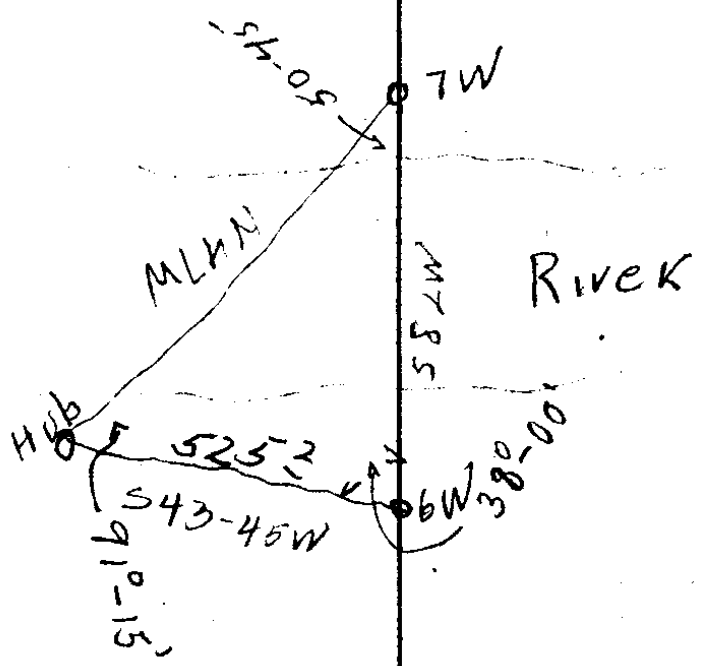
Time 3 51 18
P Hor Angle 29° 14'
Vertical u 29° 42'
Needle

Δ 7

Time 3 50 20
d Hor 29° 37'
Ver. 28° 25'
S 65° 15' W

C. S. File No. 6/18

$\Delta 14W$					
21° 104 ²	97 ⁹	0-14'		N89W	S89°48'W ✓
$\Delta 13W$					
24 98'	89 ⁶	0-46		N89W	N89°58'W ✓
$\Delta 12W$					
21-30 116 ⁵	108.4	0-43	2°-43	N88-30W	N89°12'W
$\Delta 11W$					
	241 ⁸		0°-28	S89W	S88°05'W
$\Delta 10W$					
	300 ⁴	0-39'		S88-30W	S89°37'W
$\Delta 9W$					
	298 ²	5°-59		S89W	S88°16'W
$\Delta 8W$					
3-30 133 ³	133 ⁵		13°-43	N84-30W	N85-45W
$\Delta 7W$					
	678 ⁰	12-37		S82W	S80°32'W
$\Delta 6W$					
22-30 167 ³	154.6	2°-28'		N88W	N86°51'W
$\Delta 5W$					
20-30 129 ²	121.7	22°-54'		N85-30W	N84°23'W
$\Delta 4W$					
39-30 105	86.0		24°-49'	N63-30W	N61°29'W
$\Delta 3W$					
31-30 95 ⁶	73.0	9°-05'		N85-30W	N86°18'W
$\Delta 2W$					



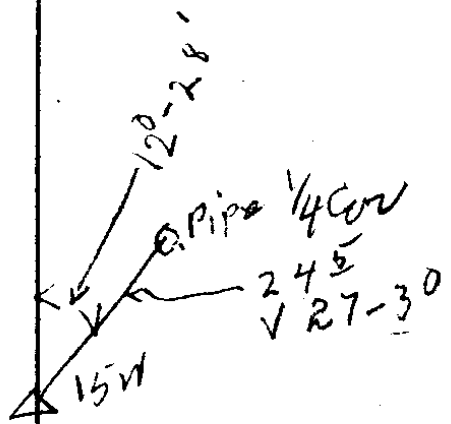
37
 71
 50
 45
 194
 00

C. S. File No. 6/48

Δ 26W 20 241 ³	226 ⁷	3°-12'		N 89-30W	S 88° 48' W ✓
Δ 25W 10-15 143 ²	136 ⁴		1°-17'	N 87W	N 88-00W ✓ ●
Δ 24W 5-3° 167 ⁸	167°	14-19		N 88W	N 89-17W ✓
Δ 23W 13 64 ⁹	63 ²		30-35	N 74-30W	N 74-58W ✓
Δ 22W 16-45 102 ⁴	98 ²	12'-09		S 75-30W	S 74-07W ✓
Δ 21W 14-3° 107°	103°	6°-24'		S 87-30W	S 86-16W ✓ ●
Δ 20W 24 110 ⁹	101 ³		3°-37	N 86-30W	N 87-20W ✓
Δ 19W 30 146 ⁶	127°		50-51'	W 21	S 89-03W ✓
Δ 18W 17° 217 ⁵	208°	2°-07'	2	S 89W	S 88-12W ✓
Δ 17W 17 116 ¹	111°		0-52'	S 88-30W	N 89-41W ✓
Δ 16W 28° 66 ²	58 ⁵		0°-34'	W 21	S 89-27W ✓ ●
Δ 15W 11 134 ²	131 ⁷	0°-35'		S 89-30W	S 88-53W ✓
Δ 14W					

23 W Top Hill

at Sta 20 W BT. Back
50-24" B.O. By O.K.
Tree should be W.O.



14 W C. S. File No. 6/48

Δ 35W constant by level QK,

16° - 824 79²

Δ 34W

6° 275⁹ 274⁴

Δ 33W

11-30 272⁹ 267³ 0-49

Δ 32W

12° 198¹ 193⁸

Δ 31W

7-30 159⁶ 158¹ 2° - 59'

Δ 30W

7-45 104⁹ 103⁹

Δ 29W

171⁷

Δ 24W

11-30 279⁹ 225³ 1° - 50'

Δ 27W

15 185² 178⁹

Δ 26W

25° - 27' N65W

N66° 28' W ✓

0° - 21' W int

S88° 05' W ✓

S89-30W

S87-44W ✓

0,44'

N89-30W

S88-33W ✓

W int

S87-49W ✓

1° - 26'

N87W

N88° 12' W

2° - 44'

N88-30W

N89° 38' W ✓

S89W

S87-38W

0° - 40'

N89-30W

S89-28W ✓

9

C. S. File No. 6/48

110 295 ³ 1°05'	295 ²	16500 0°0'		
109 9°15' 260°	256 ⁶	0°0'		
108	184 ⁶	90° RE		N 87° N
107	39 ⁹			
106 300° 15' 45" 39 ⁶	$\frac{396}{394.7}$ 334.3	90° Lt.		S3° N
105	44.3			N89° W
104		0°0'		
171 ³ +5 ²	171 ²			
103 1278 - 21 ²⁵	118 ²			
+102		00		
164 ³ - 27°	146 ⁴			
+101		00		
119 ⁶ - 34°	99 ²			N88° W
Exp. 1/4		L85.39		
	143.6			N2° 30W
#22		+105° 41' R		N4° ZW
#21				S11° 26' E

1650^e 42.9 south #110

1354^e 28.1 south #109

1098^e 15.2 south - #108

South

913^e

↙ 60 south - #107
459 south #106
amb = 05020528

579^e

29' south

535^e

26.3 south 104

363^e

18.3 south 1st #103
90

245^e

12.3 south 1012^e
96.4
9.6

99^e

5.2 south - 101^e

1/4 Cor. 17th & 18th - 8 in Fir S57°W - 8 ft

Set Aug. 19, 1927 1/2 " Fir S62°30'E - 3 ft.
1 1/2 clock.

Stewarts 1/4 Cor.

#121 27°20' 103 ⁸	92 ²	0°0'	N86°W
#120	175 ⁵	225 ² 0°0'	N86°W
#119 11°00' 217 ⁸	213 ⁸	0°0'	
#118 4°00' 194 ²	193 ⁵	0°0'	
117	300 ² 300 ² 101 ⁴ } 70 ¹	90°RL	N86°15'W
116	50 ²	90°LL	S3°30'W
115	285 ⁹	90°RL	N86°30'W
114	50 ²	90°LL	S3°30'W
#113	300 ² 75 ¹ 3 ¹	0°0'	
#112 0°50' 30 ² 289	305 ²	90°RL	N86°30'W
#111	60 ¹	90°LL	S3°30'W
#110			

3992.2

S. 0.4

4837
2940.7
3616
3247

3900.2

3900.2

4.2 North

~~2570.2~~

37247

N 13.0

#119

35109

N 23.7

33174

33.4 North

South

05020828

2616.0

18.7 North

South

2330.1

17.0 South

1955.0

18.0 North

#1122

South

17.0 North

#132

#131 27° 90° Lt 54° W

7°45' 62° #130 61.4 90° Rt N86° W

#129 25° 90° Lt 54° W

18°25' 84° #128 80.3 90° Rt N86° W

#127 10° 90° Lt 54° W

26°35' 95° #126 85.7

14°30' 237.9 #125 230.3

21°47' 114° #124 106.2

27°25' 158° #123 140.7 N86° W

27°25' 104° #122 98.7 0°0'

18°40' 134° #121 127.5 0°0'

4923⁰

South

4923⁰

South

4861⁶

South

47813930⁸

46955

4465³

4359¹

4218⁴

4119⁷

12⁸ North #132

12

12² South #131

9.1 South #130⁰

34.1 South #129

40.5 South

35.8 South

24.2 South #125

18.9 South #124

11.8 South

6.8 South

C. S. File No.

6/48

#142
2190 300 280.3 90°RE
#141

9.0 90°LT
#140

230 51 46.9
#139

10.50 110 108.0 90°LT
#138

9.0 90°RT
#137

7.15 154 153.0 90°RT
#136

(158) 90°LT
#135

0.2 156 156.8 90°RT
#134

(16) 90°LT
#133

2.90 213 213.5 90°RE
#132

S4W

N86°W

1/4 Cor 13
30 B.O, N31E21 ft
old. T. SW

15 ft No. of 14 Cor. 5881.5

South

5601.2

N36.0 on 140.

5554.3

N59 E on 1392

5233 5446.3

North

5446.3

N20 E on 137

~~3702~~

3703

21.2 North on 135

5293.3

20.1 N #134

16 South

5136.5

4.1 North #133

CS FILE FOLDER

CONTAINS

MORE

INFORMATION