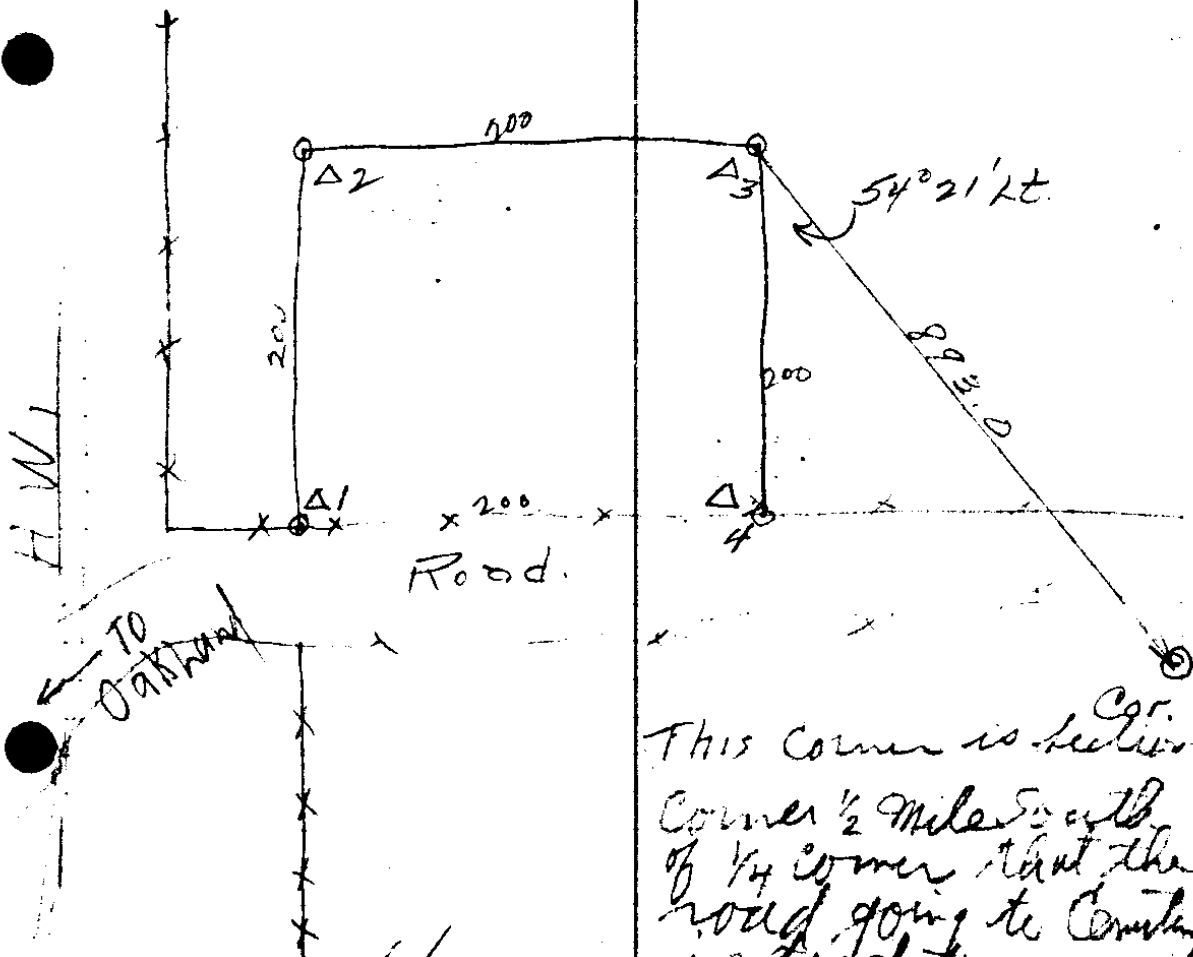


Sec for 4-5-8-9
 + 255 R5W



This corner is ^{Cor.} believed
 corner $\frac{1}{2}$ mile S. with
 of $\frac{1}{4}$ corner that the
 road going to Country
 is tied to.
 road off of own head
 on P.H. Bridge

C. S. File No. 6/45

R. W. Starn To, Marine B...

G. A. D. N. & M. A.

Make deed description and
send to Starns.

Cor.

893.0

N 82° W

N 81-51 W

A 3

54° 11'

#

L 4

90° R

200.0

N 27° 30' W

N 27-30 W

A 3

90° R

200.0

S 62° 30' W

S 62-30 W

A 2

90° R

200.0

S 27° E

S 27-30 E

A 1

90° R

250.0

N 62-30 E

A 4

Deed Description,
R.A. Stearns to Maupin Bros.
Office of County Surveyor, July 16, 1927

Beginning at a point from which the Section corner common to Sections 4-5-8-9, T 25 S, R 5 W W.M., Douglas County, Oregon, ~~thence~~ bears N 81°51'W 893.0 feet, thence N 27°30'W 200.0 feet, to the County Road, thence N62°30'E 200.0 feet, thence S 27°30'E 200.0 feet, thence S 62°30'W 200.0 feet to the place of beginning containing 0.92 acres more or less.