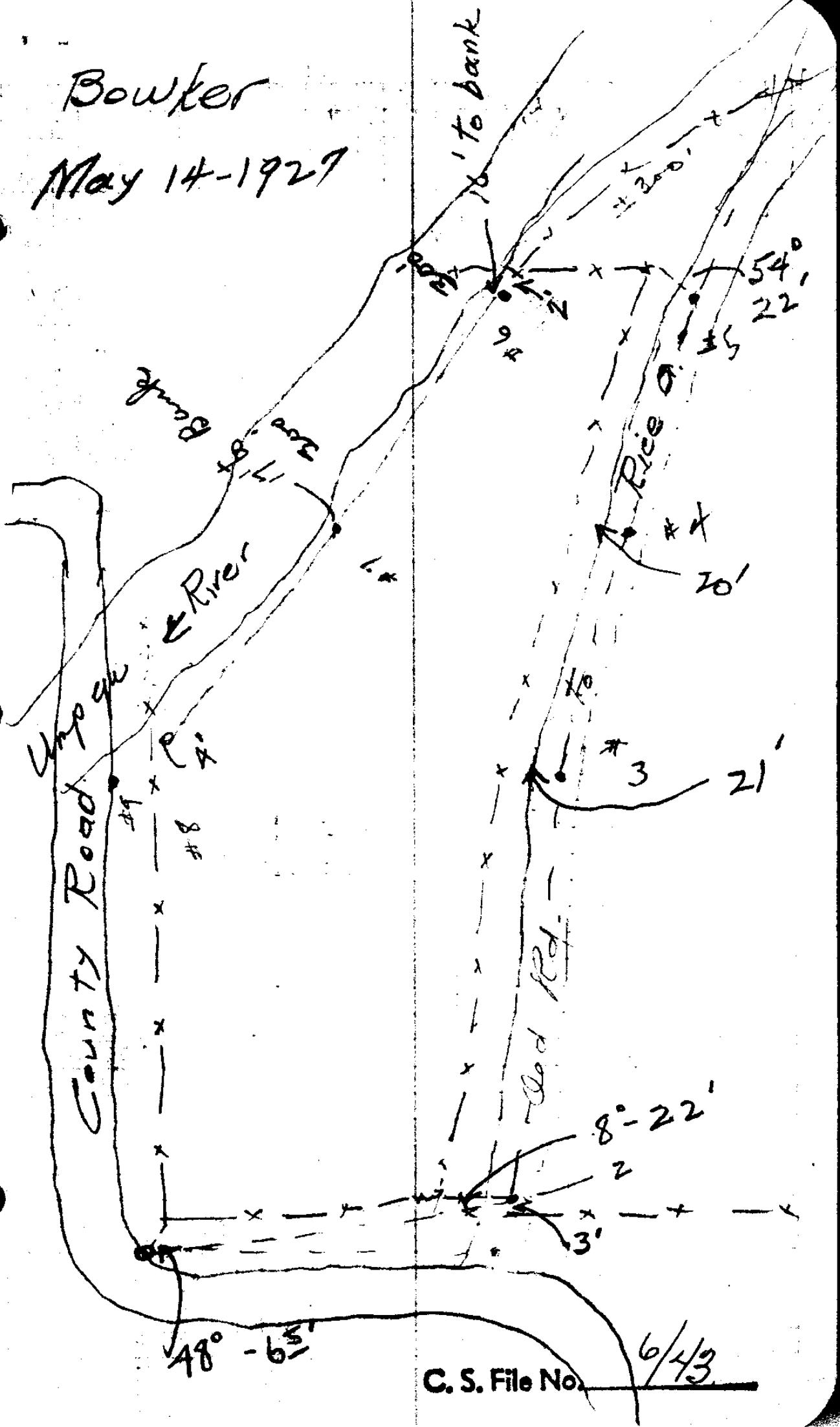


C. S. File No. 6/43

#2			S20-05W
#1	39.7	L50°53' L21°16'	570°W S70-58W
#10	759.1	↓	S89°W N87-46W
#9	21.5	L65°37'	N22 <sup>3</sup> / <sub>4</sub> W N22-09W
#8	437 <sup>2</sup>	0°00' R9°37'	N22 <sup>3</sup> / <sub>4</sub> W N22-09W
#7	206.8	↓ L97°46'	N32°30W N31-46W
#6	63.7		N65 <sup>1</sup> / <sub>2</sub> E N66-00E
#5		L61°15'	
#4	207.3		S53E S52-45E
	179 <sup>5</sup>	R7°24'	S60°15E S60-09E
#3	805.6	R6°22'	S66°E S66-31E
#2	113.6	L86°31'	S19°20W S20-00W
#1			

Bowker

May 14-1927



C. S. File No. 6/43

1/4 Cor.

44'

# 1

R46°4.

N63W

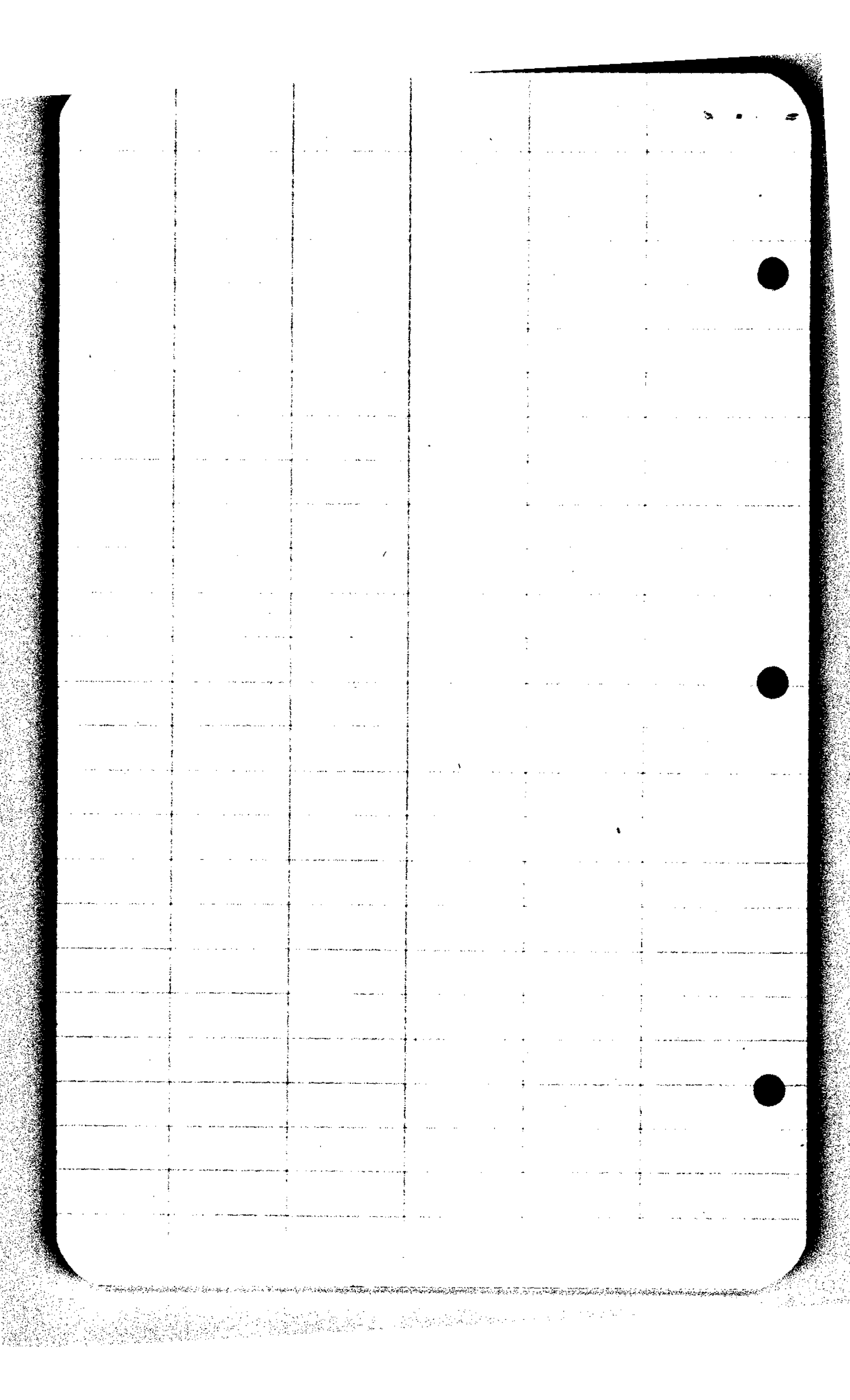
N62-8W

# 10

S70-58W

29/32-285 R 6  
Iron Aule set by  
Frear. B.T. standing  
post not checked.

C. S. File No. 6/43



Beginning at a point on the South boundary of the County Road which point bears S 31°21'E 49.4 feet from the 1/4 corner between Sections 29 and 32 Township 28 South, Range 6 West, Willamette Meridian, Douglas County, Oregon, thence S 21°04'W 155.6 feet, thence S 56°24'E 801 feet, thence S 59°48'E 178 feet, thence S 48°45'E 188.2 feet, thence N 64°24'E 273 feet to the center line of the South Umpqua River, thence following the center line of the South Umpqua River downstream N 26°54'W 570.5 feet to a point on the South right of way line of the County Road, thence following the said south right of way line of the County Road N 88°06'W 970 feet to the place of beginning containing 9.75 acres more or less.

CS FILE FOLDER

CONTAINS

MORE

INFORMATION