

Deed Description from C. F. Krogel to  
The C. & O. Power Company.

Beginning at a point, which bears East 1521.2 feet from the  
quarter corner between sections 23 & 24, T. 27 S. R. 5 W. W. M.  
Douglas County, Oregon;

Thence East 500.0 feet along the County road.

Thence South 80.0 feet.

Thence West 500.0 feet.

Thence North 80.0 feet to the place of beginning, Containing  
0.918 acres more or less.

# C & O Power Co

1/4 cu  
hu 23-24

Δ 5

179°

63°-36' N 50 30 W N 51-37 W

Δ 4

200° 25-14

S 65 W S 64-47 W

Δ 3

300° 0-13

S 89 W S 89-01 W

Δ 2

300° 1°-32'

S 89-30 W S 89-14 W

Δ 1

300 2-44

N 89 W N 89-14 W

N 85 W

300°

3°-30

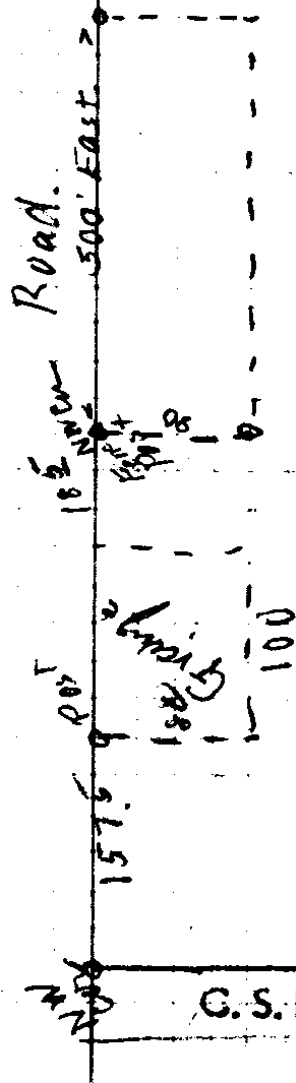
N 85 W N 86-30 W

east

# C. & O. Power Co.

Exception for deed.

Beginning at a point which bears  
 E 157° 21.2' feet. Thence East along  
 500<sup>feet</sup> County Road; Thence South 80 feet  
 Thence West 500 feet Thence North  
 80 feet to place of beginning  
 containing .918 acres more  
 or less.



sighted on N C Co

Vol 74 P 387 C F Kroegel to The Dixonville Auditorium corner  
 Beginning 157.5 East of the Northwest corner  
 of the North east quarter of the South west quarter  
 in section 24 T27S R3W, W.M.,  
 Thence south 80 feet

" East 100 "

" North 80 "

" W 100 "

to place of beginning •

Field Notes.

George Frick Cl 42

Beginning at S E cor of 42 on line between Sec 24-23 set post

A.B.O. 18 in bears N45° W 75 - lbs raised road. <sup>323</sup>

North on east boundary of Cl 42 on line bet sec 32-24

344 to cor in angle at S Boundary Cl 42 same being 1/4 post  
 on line bet sec 23-24 from which A.W.O. 16" diam bears S 76° 30' W 271 lbs  
 on ash 14 in diam bears S 76° 30' W 371 lbs.

East on S Bdy of Cl 42.

18.00 S E cor claim 42 + S W cor claim 50

Set post in prairie deposited stone 6x4 raised road.

North on E bdy of W bdy of Cl 50

20.03 to NW cor claim 58: 3652 TON E cor Cl 42

set post in prairie deposited stone 6x5 raised road.

West on N bdy 18.45 intersect line between sec 23 & 24

332 chs south of sec cor

81.67 to NW cor Cl 42: set post in prairie  
 deposited stone 7x5 raised road.

South on W bdy of Cl 42

16 20 10 centerline 56 lb wide C.W.

39.94 SW cor Cl 42 A.B.O. 9" bears N 15° E 38 lbs

East on random S bdy " " " 15" " N 79° E 31 "

63.10 intersect 36 lb North of beginning cor.

N 89°-40' W on true S bdy of Cl 42

9.67 50 in Creek 36 lb wide C.N.W.

63.10 To SW cor Cl 42

No.	SURNAME AND GIVEN NAME	PARTY	VOTED	BALLOT NUMBER	REMARKS
1	<i>Margaret Cl 50 27-5 Field Notes</i>				
2	<i>Beginning at NW cor of C 50 to E body of C 42                  set post A.W.O 6" bears N41°W 224 to Var 18 E</i>				
3	<i>S on W body of Cl 50 &amp; E body of Cl 42</i>				
4	<i>20.03 To SW cor. Cl 50 &amp; SE cor Cl 42 see Cl 42 on E</i>				
5	<i>East on S body of Cl 50;</i>				
6	<i>59.96 intersect township line at quarter on line between                  19 &amp; 24 post with nail.</i>				
7	<i>40.087 To cor see 13-24-18-19 a post with nail.</i>				
8	<i>West on line between see 24 &amp; 13 on N body Cl 50</i>				
9	<i>20.00 To a NW cor Cl 50 set post in plain 2 1/2 ft old.</i>				
10	<i>stone 6 X 5 Round corner</i>				
11	<i>South on west body of Cl 50</i>				
12	<i>set stone post 2 1/4 X 12 X 8 in pieces and</i>				
13	<i>west on true North body of Cl 50</i>				
14	<i>40.60 to NW cor Cl 50 &amp; to place of beginning</i>				
15					
16					
17					
18					
19					
20					
21					
22					
23					
24					
25					
26					
27					
28					

*cont. 3108*  
*ST & LV with*  
*10-25-4*  
*6/35*  
 C. S. File No.

CS FILE FOLDER

CONTAINS

MORE

INFORMATION