

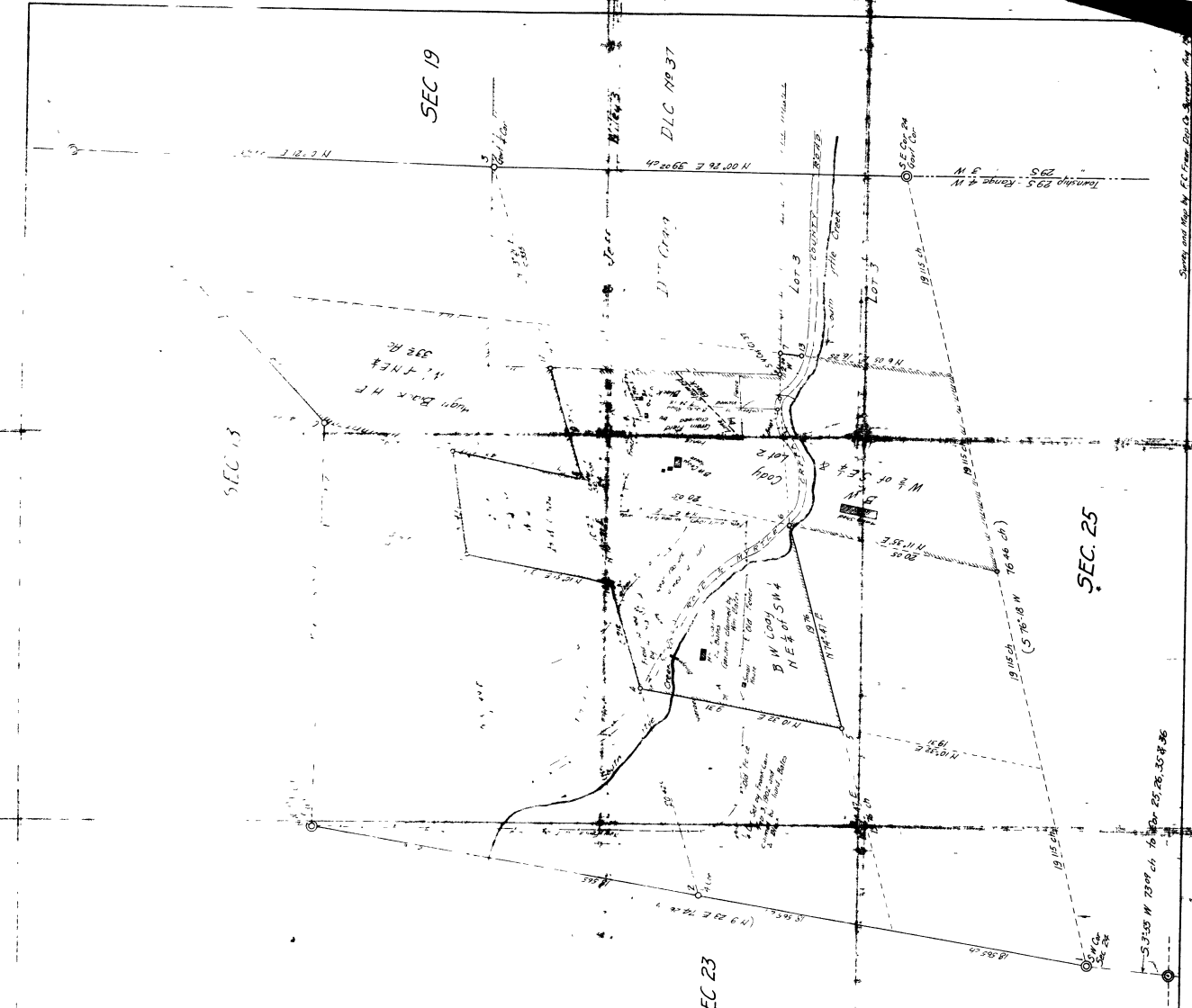
**MAP SHOWING SUB-DIVISION OF
SEC. 24-T.29S. - R.4W. - W.M.
DOUGLAS COUNTY, ORE.**

Area of SEC 24 46/17 Ac
Area of BW Codys Land 102.9 Ac
Area of Hugh Blacks Land 33.2 Ac

Bearings are from Sun
M B Germond C E County Surveyor
August 1918.

Scale 1 in. = 500 ft.

Lot No.	Area	Remarks
1	11.300 I Pipe	1/2 Sec 24
2	11.300 I Pipe	1/2 Sec 24
3	11.300 I Pipe	1/2 Sec 24
4	11.300 I Pipe	1/2 Sec 24
5	11.300 I Pipe	1/2 Sec 24
6	11.300 I Pipe	1/2 Sec 24
7	11.300 I Pipe	1/2 Sec 24
8	11.300 I Pipe	1/2 Sec 24
9	11.300 I Pipe	1/2 Sec 24
10	11.300 I Pipe	1/2 Sec 24
11	11.300 I Pipe	1/2 Sec 24
12	11.300 I Pipe	1/2 Sec 24
13	11.300 I Pipe	1/2 Sec 24
14	11.300 I Pipe	1/2 Sec 24
15	11.300 I Pipe	1/2 Sec 24
16	11.300 I Pipe	1/2 Sec 24
17	11.300 I Pipe	1/2 Sec 24
18	11.300 I Pipe	1/2 Sec 24
19	11.300 I Pipe	1/2 Sec 24
20	11.300 I Pipe	1/2 Sec 24
21	11.300 I Pipe	1/2 Sec 24
22	11.300 I Pipe	1/2 Sec 24
23	11.300 I Pipe	1/2 Sec 24
24	11.300 I Pipe	1/2 Sec 24
25	11.300 I Pipe	1/2 Sec 24
26	11.300 I Pipe	1/2 Sec 24
27	11.300 I Pipe	1/2 Sec 24
28	11.300 I Pipe	1/2 Sec 24
29	11.300 I Pipe	1/2 Sec 24
30	11.300 I Pipe	1/2 Sec 24
31	11.300 I Pipe	1/2 Sec 24
32	11.300 I Pipe	1/2 Sec 24
33	11.300 I Pipe	1/2 Sec 24
34	11.300 I Pipe	1/2 Sec 24
35	11.300 I Pipe	1/2 Sec 24
36	11.300 I Pipe	1/2 Sec 24
37	11.300 I Pipe	1/2 Sec 24
38	11.300 I Pipe	1/2 Sec 24
39	11.300 I Pipe	1/2 Sec 24
40	11.300 I Pipe	1/2 Sec 24
41	11.300 I Pipe	1/2 Sec 24
42	11.300 I Pipe	1/2 Sec 24
43	11.300 I Pipe	1/2 Sec 24
44	11.300 I Pipe	1/2 Sec 24
45	11.300 I Pipe	1/2 Sec 24
46	11.300 I Pipe	1/2 Sec 24
47	11.300 I Pipe	1/2 Sec 24
48	11.300 I Pipe	1/2 Sec 24
49	11.300 I Pipe	1/2 Sec 24
50	11.300 I Pipe	1/2 Sec 24
51	11.300 I Pipe	1/2 Sec 24
52	11.300 I Pipe	1/2 Sec 24
53	11.300 I Pipe	1/2 Sec 24
54	11.300 I Pipe	1/2 Sec 24
55	11.300 I Pipe	1/2 Sec 24
56	11.300 I Pipe	1/2 Sec 24
57	11.300 I Pipe	1/2 Sec 24
58	11.300 I Pipe	1/2 Sec 24
59	11.300 I Pipe	1/2 Sec 24
60	11.300 I Pipe	1/2 Sec 24
61	11.300 I Pipe	1/2 Sec 24
62	11.300 I Pipe	1/2 Sec 24
63	11.300 I Pipe	1/2 Sec 24
64	11.300 I Pipe	1/2 Sec 24
65	11.300 I Pipe	1/2 Sec 24
66	11.300 I Pipe	1/2 Sec 24
67	11.300 I Pipe	1/2 Sec 24
68	11.300 I Pipe	1/2 Sec 24
69	11.300 I Pipe	1/2 Sec 24
70	11.300 I Pipe	1/2 Sec 24
71	11.300 I Pipe	1/2 Sec 24
72	11.300 I Pipe	1/2 Sec 24
73	11.300 I Pipe	1/2 Sec 24
74	11.300 I Pipe	1/2 Sec 24
75	11.300 I Pipe	1/2 Sec 24
76	11.300 I Pipe	1/2 Sec 24
77	11.300 I Pipe	1/2 Sec 24
78	11.300 I Pipe	1/2 Sec 24
79	11.300 I Pipe	1/2 Sec 24
80	11.300 I Pipe	1/2 Sec 24
81	11.300 I Pipe	1/2 Sec 24
82	11.300 I Pipe	1/2 Sec 24
83	11.300 I Pipe	1/2 Sec 24
84	11.300 I Pipe	1/2 Sec 24
85	11.300 I Pipe	1/2 Sec 24
86	11.300 I Pipe	1/2 Sec 24
87	11.300 I Pipe	1/2 Sec 24
88	11.300 I Pipe	1/2 Sec 24
89	11.300 I Pipe	1/2 Sec 24
90	11.300 I Pipe	1/2 Sec 24
91	11.300 I Pipe	1/2 Sec 24
92	11.300 I Pipe	1/2 Sec 24
93	11.300 I Pipe	1/2 Sec 24
94	11.300 I Pipe	1/2 Sec 24
95	11.300 I Pipe	1/2 Sec 24
96	11.300 I Pipe	1/2 Sec 24
97	11.300 I Pipe	1/2 Sec 24
98	11.300 I Pipe	1/2 Sec 24
99	11.300 I Pipe	1/2 Sec 24
100	11.300 I Pipe	1/2 Sec 24



Survey and Map by F. F. Price, Dist. C. Surveyor Gen.

File No. 205, 1918
M B Germond
C E County Surveyor

CS FILE FOLDER

CONTAINS

MORE

INFORMATION