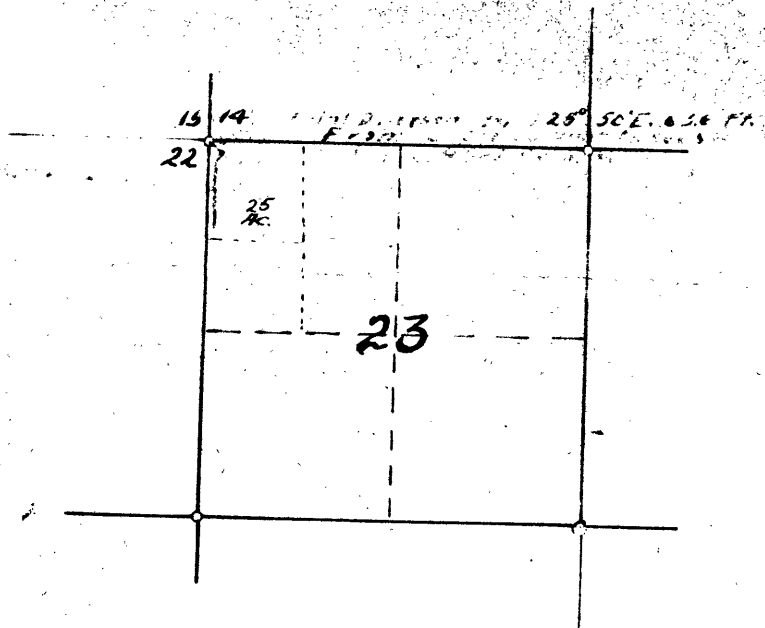


Scale 2 in. = 1 mi.



MAP OF
**B. R. WEST IRRIGATION
SYSTEM**

IN
SEC. 23 T. 29 S. - R. 5 W. Willam Mer.
DOUGLAS CO. ORE
Office of F. C. Frear. Co. Surv.
AUG 1920

CERTIFICATE OF SURVEYOR

I, H. L. Eppstein of Roseburg, Oregon, do hereby certify that this map was made from notes taken during an actual survey made by me, on Aug. 31, 1920, and that it correctly represents the works described in the accompanying application, with the location of streams in the immediate vicinity

H. L. Eppstein
Deputy County Surveyor.