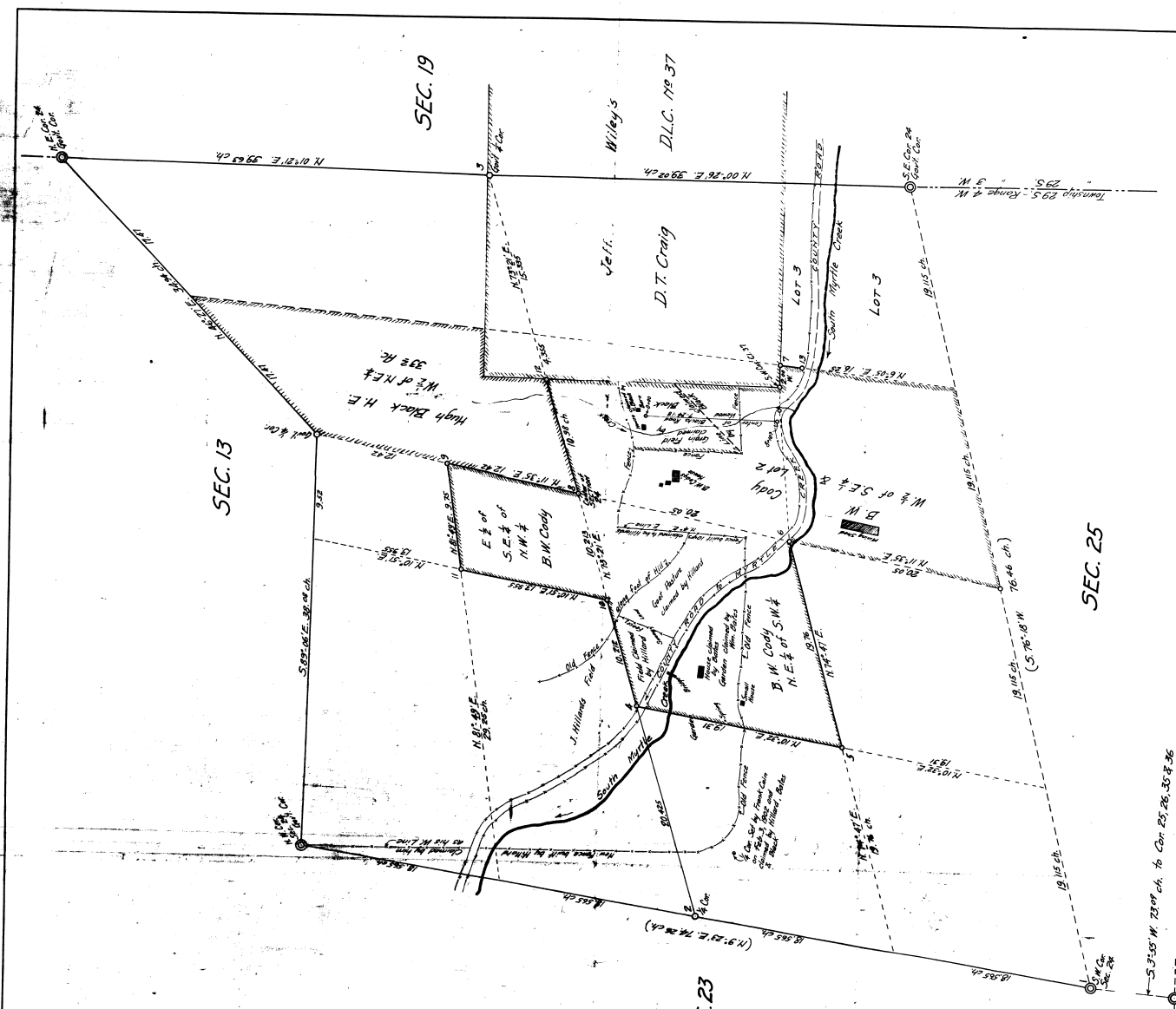


**MAP SHOWING SUB-DIVISION OF
SEC. 24 - T. 29 S. - R. 4 W. - W. M.
DOUGLAS COUNTY, ORE.**

Area of SEC. 24 46.17 Ac.
Area of B.M. Cody's Land 102.9 Ac.
Area of Hugh Black's Land 33.2 Ac.

Bearings are from Sun.
M.B. Germond C.E. County Surveyor.
August 1918.

COR. NO.	Description	Remarks	Area
1	5' Corner Post	8' Center Stake	102.9
2	18' x 18' I. Pipe	5' x 5' F. 2"	33.2
3	18' x 18' I. Pipe	5' x 5' F. 2"	33.2
4	18' x 18' I. Pipe	5' x 5' F. 2"	33.2
5	18' x 18' I. Pipe	5' x 5' F. 2"	33.2
6	18' x 18' I. Pipe	5' x 5' F. 2"	33.2
7	18' x 18' I. Pipe	5' x 5' F. 2"	33.2
8	18' x 18' I. Pipe	5' x 5' F. 2"	33.2
9	18' x 18' I. Pipe	5' x 5' F. 2"	33.2
10	18' x 18' I. Pipe	5' x 5' F. 2"	33.2
11	18' x 18' I. Pipe	5' x 5' F. 2"	33.2
12	18' x 18' I. Pipe	5' x 5' F. 2"	33.2
13	18' x 18' I. Pipe	5' x 5' F. 2"	33.2
14	18' x 18' I. Pipe	5' x 5' F. 2"	33.2
15	18' x 18' I. Pipe	5' x 5' F. 2"	33.2
16	18' x 18' I. Pipe	5' x 5' F. 2"	33.2
17	18' x 18' I. Pipe	5' x 5' F. 2"	33.2
18	18' x 18' I. Pipe	5' x 5' F. 2"	33.2
19	18' x 18' I. Pipe	5' x 5' F. 2"	33.2
20	18' x 18' I. Pipe	5' x 5' F. 2"	33.2
21	18' x 18' I. Pipe	5' x 5' F. 2"	33.2
22	18' x 18' I. Pipe	5' x 5' F. 2"	33.2
23	18' x 18' I. Pipe	5' x 5' F. 2"	33.2
24	18' x 18' I. Pipe	5' x 5' F. 2"	33.2
25	18' x 18' I. Pipe	5' x 5' F. 2"	33.2
26	18' x 18' I. Pipe	5' x 5' F. 2"	33.2
27	18' x 18' I. Pipe	5' x 5' F. 2"	33.2
28	18' x 18' I. Pipe	5' x 5' F. 2"	33.2
29	18' x 18' I. Pipe	5' x 5' F. 2"	33.2
30	18' x 18' I. Pipe	5' x 5' F. 2"	33.2
31	18' x 18' I. Pipe	5' x 5' F. 2"	33.2
32	18' x 18' I. Pipe	5' x 5' F. 2"	33.2
33	18' x 18' I. Pipe	5' x 5' F. 2"	33.2
34	18' x 18' I. Pipe	5' x 5' F. 2"	33.2
35	18' x 18' I. Pipe	5' x 5' F. 2"	33.2
36	18' x 18' I. Pipe	5' x 5' F. 2"	33.2
37	18' x 18' I. Pipe	5' x 5' F. 2"	33.2
38	18' x 18' I. Pipe	5' x 5' F. 2"	33.2
39	18' x 18' I. Pipe	5' x 5' F. 2"	33.2
40	18' x 18' I. Pipe	5' x 5' F. 2"	33.2
41	18' x 18' I. Pipe	5' x 5' F. 2"	33.2
42	18' x 18' I. Pipe	5' x 5' F. 2"	33.2
43	18' x 18' I. Pipe	5' x 5' F. 2"	33.2
44	18' x 18' I. Pipe	5' x 5' F. 2"	33.2
45	18' x 18' I. Pipe	5' x 5' F. 2"	33.2
46	18' x 18' I. Pipe	5' x 5' F. 2"	33.2
47	18' x 18' I. Pipe	5' x 5' F. 2"	33.2
48	18' x 18' I. Pipe	5' x 5' F. 2"	33.2
49	18' x 18' I. Pipe	5' x 5' F. 2"	33.2
50	18' x 18' I. Pipe	5' x 5' F. 2"	33.2
51	18' x 18' I. Pipe	5' x 5' F. 2"	33.2
52	18' x 18' I. Pipe	5' x 5' F. 2"	33.2
53	18' x 18' I. Pipe	5' x 5' F. 2"	33.2
54	18' x 18' I. Pipe	5' x 5' F. 2"	33.2
55	18' x 18' I. Pipe	5' x 5' F. 2"	33.2
56	18' x 18' I. Pipe	5' x 5' F. 2"	33.2
57	18' x 18' I. Pipe	5' x 5' F. 2"	33.2
58	18' x 18' I. Pipe	5' x 5' F. 2"	33.2
59	18' x 18' I. Pipe	5' x 5' F. 2"	33.2
60	18' x 18' I. Pipe	5' x 5' F. 2"	33.2
61	18' x 18' I. Pipe	5' x 5' F. 2"	33.2
62	18' x 18' I. Pipe	5' x 5' F. 2"	33.2
63	18' x 18' I. Pipe	5' x 5' F. 2"	33.2
64	18' x 18' I. Pipe	5' x 5' F. 2"	33.2
65	18' x 18' I. Pipe	5' x 5' F. 2"	33.2
66	18' x 18' I. Pipe	5' x 5' F. 2"	33.2
67	18' x 18' I. Pipe	5' x 5' F. 2"	33.2
68	18' x 18' I. Pipe	5' x 5' F. 2"	33.2
69	18' x 18' I. Pipe	5' x 5' F. 2"	33.2
70	18' x 18' I. Pipe	5' x 5' F. 2"	33.2
71	18' x 18' I. Pipe	5' x 5' F. 2"	33.2
72	18' x 18' I. Pipe	5' x 5' F. 2"	33.2
73	18' x 18' I. Pipe	5' x 5' F. 2"	33.2
74	18' x 18' I. Pipe	5' x 5' F. 2"	33.2
75	18' x 18' I. Pipe	5' x 5' F. 2"	33.2
76	18' x 18' I. Pipe	5' x 5' F. 2"	33.2
77	18' x 18' I. Pipe	5' x 5' F. 2"	33.2
78	18' x 18' I. Pipe	5' x 5' F. 2"	33.2
79	18' x 18' I. Pipe	5' x 5' F. 2"	33.2
80	18' x 18' I. Pipe	5' x 5' F. 2"	33.2
81	18' x 18' I. Pipe	5' x 5' F. 2"	33.2
82	18' x 18' I. Pipe	5' x 5' F. 2"	33.2
83	18' x 18' I. Pipe	5' x 5' F. 2"	33.2
84	18' x 18' I. Pipe	5' x 5' F. 2"	33.2
85	18' x 18' I. Pipe	5' x 5' F. 2"	33.2
86	18' x 18' I. Pipe	5' x 5' F. 2"	33.2
87	18' x 18' I. Pipe	5' x 5' F. 2"	33.2
88	18' x 18' I. Pipe	5' x 5' F. 2"	33.2
89	18' x 18' I. Pipe	5' x 5' F. 2"	33.2
90	18' x 18' I. Pipe	5' x 5' F. 2"	33.2
91	18' x 18' I. Pipe	5' x 5' F. 2"	33.2
92	18' x 18' I. Pipe	5' x 5' F. 2"	33.2
93	18' x 18' I. Pipe	5' x 5' F. 2"	33.2
94	18' x 18' I. Pipe	5' x 5' F. 2"	33.2
95	18' x 18' I. Pipe	5' x 5' F. 2"	33.2
96	18' x 18' I. Pipe	5' x 5' F. 2"	33.2
97	18' x 18' I. Pipe	5' x 5' F. 2"	33.2
98	18' x 18' I. Pipe	5' x 5' F. 2"	33.2
99	18' x 18' I. Pipe	5' x 5' F. 2"	33.2
100	18' x 18' I. Pipe	5' x 5' F. 2"	33.2



Survey and Map by F.C. Frazer, D.C., Surveyor, Aug. 1918

S 37° 05' W 73° 09' ch. to Cor. 25, 26, 35 & 36

Filed Aug. 25, 1918
F.C. Frazer
County Surveyor

CS FILE FOLDER

CONTAINS

MORE

INFORMATION