



**COUNTY SURVEYOR'S RECORD, DOUGLAS COUNTY, OREGON**

<b>Survey No.</b> Made on Nov. 8 1922	<b>Survey No.</b> Made on
<b>In Town.</b> 28-29 3 Range 7 <sup>th</sup> W Sec. 31-5-6	<b>In Town.</b> Range Sec.
Made for I. B. Nichols et al	Made for
<b>Purpose of</b> Legal survey for lines and corners.	<b>Purpose of</b>
G. G. Stewart, Deputy	MAP FILE 113 1 74

5-6

I began at the section corner common to sections 31-32 T 28 S R 7 W and 5-6 in T 29 S R 7 W as set and recorded. I ran to the  $\frac{1}{4}$  corner between 31 and 32 where I find O.B.T. the other tree is missing. I set iron pipe N 18°E 200 links from this tree for correct corner. Gov't field notes, certified copy, gives bearing as S 187°W. The position I set corner in checks more closely with line to the section corner North of this. I mark a 12" W.O. S 88 $\frac{1}{2}$ ° W 36.2 ft and the O.B.T. S 18° W 132.0 ft. I compute bearing of line to be N 42°19'E 1221.1 ft and set the sixteenth corner midway between driving iron pipe and marking 18" B.O. S 45 $\frac{1}{2}$ ° W 62.0 ft. This position  $\frac{1}{4}$  North and West of corner formerly set by Frank Cain, but not recorded. It was stated that Cain used bearing of S 81°W in setting corner from B.T. I then returned to Section corner and ran traverse to  $\frac{1}{4}$  corner of West side section 31 where I find one O.B.T. and stump of other. I set temporary corner S 25°E 214.5 ft from O.B.T. and the stump then bears S 20° E 866 links, being in error one chain. I assume error is in this course as temporary corner was in position where witnesses assumed it to be. I drove iron pipe for corner and marked 16" Fir S 17°E 533.0 ft; 24" B.O. N 44° W 116.0 ft. This is Ford survey corner, and the one that I used in subdividing the section. From this corner I ran to the corner of Hawthorns survey where I found a 40" Fir O.B.T. I compute position of this  $\frac{1}{4}$  corner as being S 2°08'E 1181.0 but did not reset corner. I then continued to location of NW corner corner Cl 56 but could not find witness tree or corner. I then continued to the Township corner as set by Ford where I found the 4 O.B.T.s with old scribe marks removed. I set iron pipe for corner and remarked O.B.T.s I compute position of this corner from Ford  $\frac{1}{4}$  corner on North as being S 0°51' W 2651.5 ft. I then continued to the witness trees of Hawthorns Township corner where I tied into two trees and computed position of this corner as being S 5°09' W 1189.2 from Fords Township corner and the bearing of Hawthorns Range line between the Township corner and the  $\frac{1}{4}$  corner as S 2°28'E 2637.7 From here I continued to the position of Fords  $\frac{1}{4}$  corner between section 6 and 1. The trees called for in the Gov't notes are missing but I found a 24" W.O. scribed  $\frac{1}{4}$  S that had evidently been scribed at time of Ford survey. The SW corner of Cl 37 ties into this corner but the B.T. for the Claim corner and the Fir tree on line as called for in Claim notes are missing so that it is impossible to set this corner exactly. I located position of  $\frac{1}{4}$  corner that checked most closely with distances to streams and position of claim corner that witnesses pointed out. This position of  $\frac{1}{4}$  corner faced the blazed W.O. tree and was not far from Hawthorns tie to this corner. I drove iron pipe for  $\frac{1}{4}$  corner and marked 14" W.O. S 41 $\frac{1}{2}$ ° W 26.0 ft 30" W.O. N 85°E 47.7 ft I compute bearing of the  $\frac{1}{4}$  as set to Ford Township corner as being S 1°03'E 2854.6 ft from this corner as reset I set SW corner Cl. 37 as per field notes, drove iron pipe and mark 20" B.O. N 43°E 113.6 ft. I then continued to the SE corner Cl. 37 where I found the stump of O.B.T. but it had been moved from original position. However a fence corner was supposed to be claim corner so I set temporary corner at fence corner and continued North to claim corner where I found original rock. I compute bearing of this line to be N 1°09' W 1321.5 ft so I assume temporary corner is correct as same checks with fence line. I drive iron pipe for SE corner claim and mark a 9" W.O. N 85 $\frac{1}{2}$ ° W 42.3 ft 6" W.O. S 55°E 168.3 ft. I compute bearing of South line claim to be N 89°51'E 4635.3 ft. I went to NE exterior corner cl 37 as found and marked 12" B.O. 275.3 ft N 45°E Var 21°10'. I continued traverse to NE corner of Cl 56 but could not find corner. I went to a pipe tree marked with three old blazes that notes called for as being line tree and set the corner from this tree. The corner falls in creek and I set stake and marked 18" W. Fir S 54° W 68.5 ft and the SW side of South pier of Highway bridge over Lookingglass creek bears N 43°E 196.8 ft. From this corner I went as per field notes to location of  $\frac{1}{4}$  between 31 and 6 but could not find trees and field notes of claim are evidently in error in this tie. I set NW corner Cl 56 to coincide with old fence line and on line with line tree and NE corner. Drove iron pipe and marked 30" B.O. S 1°30'E 84.2 ft 30" Pine N 42 $\frac{1}{2}$ ° W 94.8 ft. The  $\frac{1}{4}$  corner between 31 and 6 is missing and I accept the corner as formerly set on a survey for John Cabot, when this corner was set on true line between section corners as per ratio of Gov't field notes. I also accept  $\frac{1}{4}$  corner set between sec. 30 and 31 and traverse to same, with equation of angles to correspond with this survey. I then compute position of center of section and set sixteenth corner south of center of section. Drive iron pipe in road and mark a 10" Fir N 57° E 35.9 ft. I drive iron pipe at location of intersection of this sixteenth line and North line claim and mark a 18" W.O. S 80° W 33.5 ft.

From Deed description as prepared by Cain for land in SE corner Cl. 37 I run the boundaries and set iron pipe on claim line S 89°51' W 610.5 ft from SE corner Cl. 56 This is on East line Co. Road. I set iron pipe N 1°09' W 764.3 ft from this point and mark 6" W.O. S 43 $\frac{1}{2}$ ° W 18.0 ft. From this point I run as per Cains deed N 89°51' E 1452.0 ft to intersection with section line and set iron pipe marked 14" W.O. N 79°E 50.3 ft. I cannot find  $\frac{1}{4}$  corner between 31 & 5&6 so accept Cains notes. I compute bearing of section line to be N 1°24'E and run needle line on this bearing to the computed position of sixteenth corner. Drive iron pipe and mark a 8" B.O. S 46° W 12.5 ft. From Section corner 5-6-31-32 I run to  $\frac{1}{4}$  cor. between 5-32 where I find two very old trees properly scribed but they do not agree with field notes. 18" B.O. N 55° W 43.0 ft and 20" Laurel S 34°E 20.5 ft As land is steep hill side I accept as correct and compute length of line to be N 87°44'E 1845.3 ft. I did not set sixteenth corner on account of nature of land. I did not run East or So. line of NW $\frac{1}{4}$  of NW $\frac{1}{4}$  sec 5. but computed lines. Traverse checked 03' in angle and closure was 1:2700. Angles doubled. Bearings to be turned 0°22' Right to check with Cabot survey and true bearings. This makes variation N 21°37' E. I compute acreage of I. B. Nichols as 513.53. Cabot, McBee, H. Nichols, W. Coats present most of time. C. Crocker chainman. Weather fair.

EX 111"

C. S. 5-28

J. Capot

S 89° 37' E  
N 87° 23' E

177° 00'

3°

21° 15'

24° 15'

CS 5/28

John L. Cabot

~~122~~  
122

T 28 S R 7 W

Began at  $\frac{1}{4}$  corner bet 30-31  
Cor

		11°	278 <sup>8</sup>	S2°25'W	S2°25'W
1	3°13' L	3°	135 <sup>5</sup>		S0°48'E
2	0°34' L	7' W	300°	S2½'E	S1°22'E
3	5°09' R	9°	297 <sup>7</sup>		S3°47' W
4	1°26' L	11°	298 <sup>8</sup>		S2°21' W
5	1°23' L	5°	213 <sup>4</sup>		S0°58' W
6	at Road NW cor. $\frac{1}{4}$ to d road		300 <sup>8</sup> 300°	S0°40' W	S1°49' W
7	0°56' W	-	458 <sup>8</sup>		S0°53' W
8	0°00' R	2°	300 <sup>8</sup> 300°		"
9	0°29' R	-	190 <sup>7</sup>		S1°22' W
10	RT side fence				
	20°14' L	-	61 <sup>8</sup>	S70°25'E	S18°52'E
11	left fence				

2732 ✓

1354

2974

2944

2925

2124

25	30	39
36	31	32
1	6	5

CS 5/28

11	23°01' R		128°	S 18° 52' E	S 4° 09' W
12	1°21' L		211°	S 1° 45' W	S 2° 48' W
13	+ 50 To fence of Cabots		164°	S 0° 10' E	S 0° 01' W
14	9°09' L	Tie To B.T. N 24½° E 26½ ft.	89°		S 8° 08' E
15	16°36' R	5°	151°	S 7½° W	S 8° 28' W
16	10°33' L		134°	<del>S 3½° E</del>	S 7° 05' E
17	34°18' L		273°	S 37½° E	S 36° 23' E
18	82°02' R		270°	S 44° W	S 45° 29' W
19	44°42' L		289°	S 0	S 0° 57' W
20					

3500

26 4/2  
1326

151<sup>2</sup> ✓

CS 5/28

Begin at T & R cor. and run East. This cor. has 4 O.B.T.S but cor. is not set.

cor - 2' 247<sup>5</sup> S 89<sup>1</sup>/<sub>2</sub> E S 89° 30' E

1 23° 44' L 4<sup>1</sup>/<sub>2</sub> 294<sup>4</sup> N 67° E N 66° 46' E

2 26° 59' L 22° 163<sup>7</sup> N 40° E N 39° 47' E

3 50° 39' R 13<sup>1</sup>/<sub>2</sub> 115<sup>4</sup> S 89<sup>1</sup>/<sub>2</sub> E S 89° 34' E

4 18° 25' R 4<sup>1</sup>/<sub>2</sub> 274<sup>6</sup>  
242<sup>4</sup> S 71° E S 71° 09' E

5 4° 15' R - 300° S 67° E S 66° 54' E

6 31° 17' L - 300 N 82° E N 81° 49' E

7 2° 53' L - 283<sup>2</sup> N 79<sup>1</sup>/<sub>4</sub> E N 78° 56' E

8 7° 01' L 11° 155<sup>0</sup> N 72° E N 71° 55' E

9 11° 42' R - 207<sup>4</sup> N 84° E N 83° 37' E

10 By edge creek st. pile rocks  
11 70° 29' R - 128<sup>2</sup> S 76° E S 75° 54' E

06

247<sup>L</sup>

293<sup>L</sup>

151<sup>B</sup>

112<sup>Z</sup>

273<sup>7</sup>  
242<sup>L</sup> }

152<sup>L</sup>

CS 5/28

11

13°31'R - 270° S62°E S62°23'E

12

10°01'W - 157° S73°E S72°24'E

13

40°24'L - 223° N67°E N67°12'E ✓

14

2°13'R - 95° N69½E N69°25'E

15

17°20'R - 142° N87°E N86°45'E

16

125°33'W - 172° N38°48'W

tie set 20 site 16. site 19

51°57'W 130° 229° N89½E N89°45'E

17

~~51°57'W~~

18

Tie set 20 site 16. site 19

38°08'E N0°25'W N0°40'W

19

27°06'L 8½ 266½ N62½E N62°09'E

20

49°57'R 13½ 140½ S67½E S67°54'E

21

3°08'L 6½ 101½ S71°E S71°02'E

22

$$\begin{array}{r} 2973 \\ 74 \\ \hline 2233 \end{array}$$

N 86° 59' E Solar

~~N 46° 59' W~~ N 38° 30' W Solar

site # 20

Var 21° 15'

= N 6° 57' E =

2633

1366

1014

Equation in angle

137' left  
0° 16' Rt for solar

---

121 left correct Brgs

CS 5/28

21	27° 14' W	12°	108 $\frac{7}{7}$	N 82° E	S 71° 02' E N 81° 44' E
22	11° 15' L	5°	119 $\frac{9}{9}$	N 70 $\frac{1}{4}$ E	N 70° 29' E
23	32° 55' W	15°	81 $\frac{0}{3}$	N 37° 50' E	N 37° 34' E
24	1° 21' R	8'	72 $\frac{6}{6}$	N 39 $\frac{1}{2}$ E	N 38° 55' E
25	52° 0' R	12°	91 $\frac{4}{4}$	S 88° 40' E	S 89° 05' E
26	3° 52' W	3°	85 $\frac{0}{0}$	N 87° 10' E	N 87° 03' E
27	1° 29' R	16°	111 $\frac{7}{3}$	N 88° 40' E	N 88° 32' E
28	9° 0' R	5°	240 $\frac{2}{2}$	S 82° 10' E	S 82° 28' E
29	13° 06' L	25 $\frac{1}{2}$	169 $\frac{0}{0}$	N 84° 40' E	N 84° 46' E
30	10° 14' R	32° 40'	133 $\frac{0}{0}$	S 87 $\frac{1}{2}$ E	S 85° 20' E
31	12° 11' W	31° 10'	66 $\frac{3}{4}$		N 82° 29' E
32	10° 07' L	11°	149 $\frac{2}{7}$	N 72 $\frac{1}{2}$ E	N 72° 22' E
33					

106<sup>3</sup>

● 119<sup>5</sup>

79<sup>+</sup> ✓

72<sup>0</sup>

89<sup>1</sup>

● 85<sup>2</sup>

107<sup>4</sup> ,

239<sup>4</sup>

152<sup>2</sup> ✓

111<sup>9</sup> ✓

● 568 ✓

147<sup>0</sup>

CS 5/28

53

25° 26' R

6 1/2

155°

S 82° E

N 72° 22' E

S 87° 12' E

34

-

36°

S 82° W

COR.

Sec. Cor. 5-6-31-32. O.B.T. is to  
 not check with field notes.

Evidently Turned around.

I set Rock for Cor. From

40" Fir S 79° E 49.5 ft.

15" Laurel N 16 1/2° E 66 ft.

12" P.O. (down) S 31° E 28 ft.

Marked New B.T.C.

40" Fir S 79° E 49.5 ft.

36" " S 46° W 25 ft.

40" " N 24° W 18 ft.

8" Fir N 34° E 53 ft.

John Cabot; J.B. Howard; C.M.

Howard witness July 8 1922

✓ 154/9

—

CS 5/28

236 <sup>2</sup>/<sub>5</sub>  
169 <sup>5</sup>/<sub>5</sub>  
66.7

Setting  $\frac{1}{4}$  cor S. side 31.

Set hub 13, site 14 = N67°12'E  
169.5

Set I. Pipe  $\frac{1}{4}$  Cor.  
Marked

14" Ash N74°E 26<sup>5</sup> ft.

16" " 54<sup>2</sup> ft; N59°W.

John Cabot, Harvard's, witness

---

$\frac{1}{16}$  No. of this  $\frac{1}{4}$  cor.  
set stk. Marked.  
8" W.O. N17°W 4<sup>0</sup>

5280

5020

CS 5/28

Cabot  
Survey for acreage.

14

85°10' R - 685 585° W 586°11' W

for as accepted

set stk. Marked 6' Chin Kapin  
S 37° E 4 1/2 ft

Set # 10 hub site 11

S 18° 52' E

10

defect

63° 58' L - 300 584° E 582° 50' E

1

1° 13' R - 300 582° 10' E 81° 37' E

2

4° 19' R - 232 578° E 77° 18' E

3

13° 12' R - 252 568 1/2° E 564° 06' E

4

8° 10' R - 113 557° E 555° 56' E

5

38° 0' L - 188° N 85° E N 86° 04' E

6

31° 03' R 14° 159° 564° E 562° 53' E

7

edge Bnk (Top)

299<sup>2</sup>  
67

299<sup>d</sup>  
47  

---

2524

267  
79  

---

188

154<sup>3</sup>

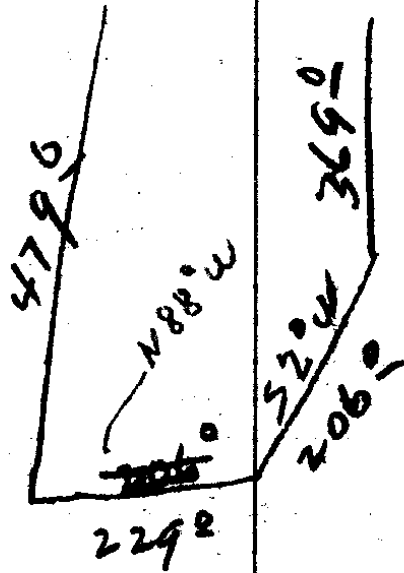
CS 5/28

7				562°53' E
8	13°58' L	5'	131 <sup>2</sup>	578 E 576°51' E
COV	2°57' R	-	102 <sup>2</sup>	575° E 573°54' E
	STK. 6" W.O N 23° E 29 <sup>6</sup>			

Set hub by Road. site ahead. 91°49' W

	117°17' L		300 <sup>8</sup> 300 <sup>5</sup> 300 <sup>5</sup> <u>166<sup>5</sup></u>	N 63° E N 64°32' E
1.				
	8°14' L	-	181 <sup>2</sup>	N 56°18' E
2				
	5°24' R	-	170 <sup>4</sup>	N 61° E N 61°42' E
3				
	0°34' R		300°	N 61°2' E N 62°16' E
4				
	0°32' L		322°	N 61°44' E
5	to cor at d Road			

131  $\frac{2}{3}$



set # 1. site SW corner  
42° 47' R

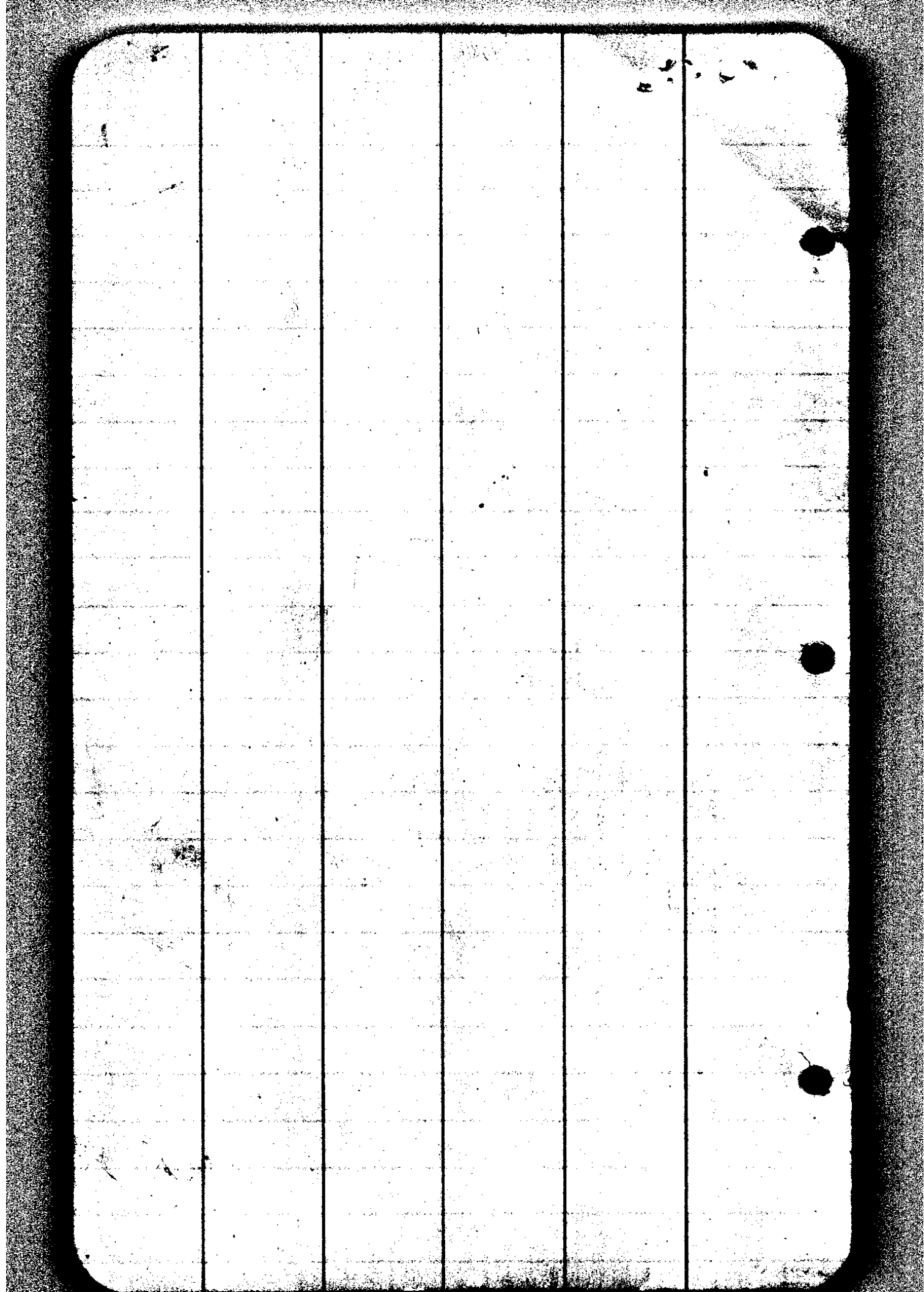
# 2 is on line w. fence  
7' corner at E Road

# 3. ditto

at 2, 123° 0' R to fence  
along west side corner  
51° 45' E

at 3, 95° 35' R fence line  
524° E

CS 5/28



C.S. 5-28

Waters 43 in T 29 S R 7 U

45 in T 29 S R 8 W

Req at a point on S boundary of 37

M. G. E. Conn. Co. of 43, W.O. 24"

570° W 641' etc, in

to 40° W.O. 14" 1175° W 430

in W 18 20 x R line 7-8

20 21 22 of 2 on bet 1-6

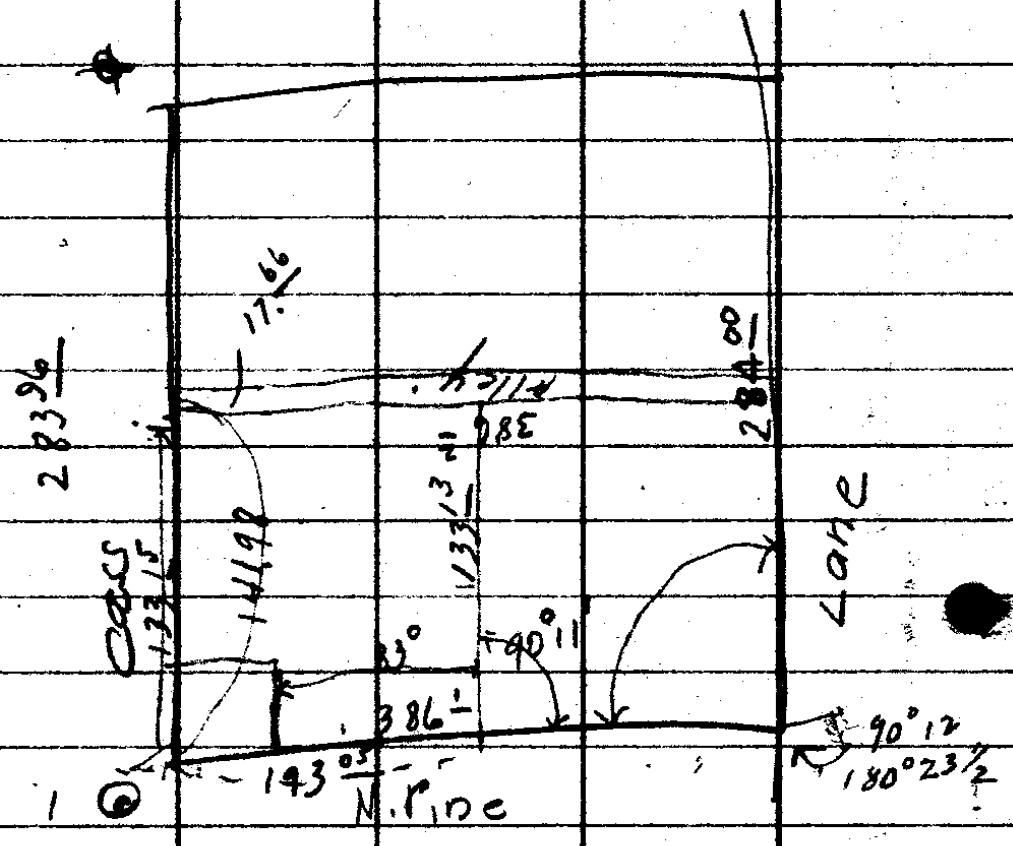
Side

32. T. 285 R 7 W

27 and 30  
40° 300°  
8" B.O. 7142° E 42  
12" B.O. S 48° W 300° 83

73°  
290°  
58°  
125°  
286°  
298°  
83°  
222°

C.S. 5/28



Set 1. site along N. Pine To Mon. set st. h. obs.  
 on Lane St.

5 <sup>30</sup>	105 <sup>30</sup>	9 <sup>32</sup>	100 <sup>00</sup>
5 <sup>05</sup>	101 <sup>03</sup>	9598	

Survey for Jew Fordney

1891

July 14<sup>th</sup> bet 1+6 T 295128

ch N 89° E 22.72 Van 1912

ch S 0.20° W 6" chink N 58° W 37

ch S 89° W 22.72 T 09 up line

30" F.S. N 10° E 20 xps

ch N 20° T 0 1-00

---

C.S. 5/28

①

I.B Nichols et al.

Legal Survey, Sec. 31 T 28S R 7W

Start Nov. 8 1922

Start of Sec. Con, 5-6-31-32

as previously set. (Set 34 hub)

Cors

31L

36°

N82°E

S82°12'E

97°15' L  
194°29'

20°35'

221<sup>8</sup>

N1°E

N0°33½'E

1

0°00'12"  
0°00'01"

33<sup>8</sup>  
27°10'

300<sup>8</sup>  
36<sup>5</sup>

N0°33'E

2

35°30' R  
71°00'

6°50'

287<sup>4</sup>

N37°E

N36°03'E

3

28°10' L  
56°20'

5½

289<sup>4</sup>

N7°53'E

4

~~51°28' L~~  
53°20' L  
106°40'

12

232<sup>1</sup>

N45°27' W

5

137°30' R

(Tie only)

9<sup>8</sup>

N87½°E

N87°03'E

¼ cor

52°07' R  
104°15'

9½

300<sup>8</sup>  
14<sup>6</sup>

N6°40'E

6

3°04' L  
6°08'

13½  
6°50'

300<sup>8</sup>  
300<sup>8</sup>  
144<sup>8</sup>

N9°36'E ✓

7

$$\begin{array}{r} 102 \\ 131 \\ \hline 233 \end{array}$$

$$207 \overset{6}{-}$$

$$\left. \begin{array}{r} 251 \overset{6}{-} \\ 32 \overset{5}{-} \end{array} \right\}$$

$$285 \overset{4}{-}$$

$$288 \overset{2}{-}$$

$$297 \overset{0}{-}$$

$$\left. \begin{array}{r} 295 \overset{9}{-} \\ 44 \overset{2}{-} \end{array} \right\}$$

B

$$\begin{array}{r} 291 \overset{7}{-} \\ 297 \overset{9}{-} \\ \hline 144 \overset{9}{-} \end{array}$$

C.S.  $\frac{5}{10}$

(2)

130° 36' E

7

4° 55' L

1932

N 1° 19' W

1/4 cor

1/4 bet 31 & 32. Find O.B.T.

set I.P. Pipe. Could Not find other Tree

set O.B.T. correct my ~~location~~ location to that

of So. side Sec. = 24° 15'

Marked 12" W.O. S 75 1/2° W 36<sup>2</sup>  
370 ft for 24° 15'

set 1/16 cor Mid way bet.

Drove & I.P.

Marked 12" B.O. S 45 1/2° W 62<sup>0</sup> ft

692

C.S. 5/20

(3)

Ed cut from 1/16 cor To 1/4 cor on west side 3'

set 5 & bit 6.

20°35'

N6°40'E

88°10 R  
176°21

13°  
12°20

204°  
299°  
37°

N85°W

N85°07 1/2 W

1

5°01 L  
10°03

7 1/2  
5°

282°  
227°  
65°

S89°50 W

✓ in old line hole on bank

30°33 R  
61°00

12 1/2

200°

N60°W

N59°38 W

3

27°45 L  
55°30

-

253 1/2

N87°23 W

4

21°50 R  
43°38

-

252°

N65°34 W

5

old  
15°38 L  
27°17

.

298°

N79°12 1/2 W

6

old(?)  
4°53 L  
9°47

stump

299°  
234°

N84°07 W

7

#10  
31°57 L  
63°53

M+S. line

5°20

294°  
295°  
134°

S63°58 1/2 W

8

6°49 R  
13°37

-

300°  
247°

S71°W

S64°5 W

9

6°40 L  
13°20

5°20

300°  
235°  
270°  
108°

S64°05 W

10

1°35 L  
3°10

-

299°  
75°

S62°30 W

11

300  
15  
282

300  
165  
235

279.6  
226.2  
528.6 ✓

279.6  
226.2  
65.6  
570.8 ✓

195.4 ✓

233.8

299.2  
297.3  
134.9  
731.6 ✓

507.6

298.7 ✓  
213.0 ✓  
911.7

240

C.S. 5/58

(4)

11

21°46' R  
43°33'

29°50'

188°

S62°30' W

S84°16½' W

12

3°51' R  
7°42'

24°30'

168°

S88°4' W

S88°07½' W

13

34°11' R  
68°23'

-

274°

N57°41' W

14

32° L  
65°25'

7½'

291°

S89°36½' W

15

Approx Cl. cor. (NW)  
19°09' R  
38°19'

-

299°  
150°

N71°14' W

16

3°52' R  
7°45'

8°

299°  
184°

N17°21½' W

17

44°14' R  
88°31'

40°40'

299°  
87°

N73° W

N23°06' W

18

44°40' R  
89°20'

-

598°  
277°  
128°

N21°34' E

19

54°29' R  
108°39'

-

598°  
45°

N76° W

N76°03½' E

20

132°50' h

27°

N56½' W

N56°47' W

¼ Bet 31 & 36.

26  
108  
27

200  
37  
300  
523

300  
183  
117

152<sup>9</sup> ✓  
274<sup>3</sup>

# 15 is 71° ft West  
of old fence line, just D.L.C  
line

288<sup>0</sup> ✓  
444<sup>2</sup>

Set 14. Lat 31-36

214<sup>5</sup> N 25° W from 0136  
a white oak. Find survey

Stump 4 15" W O S 20° E 566 ch

I assume error is in this course

Set I.P.

298<sup>0</sup> }  
874<sup>5</sup> }

16" Fir

S 17° E

533 ft

24" B.O

N 44° W

116 ft

1003<sup>1</sup> ✓

Coats, Nichols witness

413<sup>6</sup>

27<sup>2</sup>

C.S. 5/6

5

sect 20 F.S 19 N76°03½ E ✓

104°33 R - 90<sup>5</sup> S 3/4° W S 0°36½ W

21 2°48 L 598 29<sup>4</sup> S 2°11½ E ✓

22 1°54 R 140<sup>6</sup> S 0°17½ E ✓

23 18°55 R 23°25 121<sup>3</sup> S 18°37½ E

24 20°37 W 11°50 182<sup>7</sup> S 1°59½ E

25 } 12°36 W 22<sup>9</sup> de Blage S 13°25½ E ✓  
40" Fir Blazed ~~W~~ side

==== (For SW cor @) ✓

start # 15 site 14 S 89°38½ W ✓  
87°52 L - 299<sup>2</sup>  
175°44 - 312° S 1°44½ W ✓

1 12°58 L - 170<sup>6</sup> S 11°8 S 11°15 E ✓  
25°55 -

2 25°44 R 12°35 175<sup>1</sup> S 14°30½ W ✓  
51°28 -

3 By log fence } Tie To Sec 1 Cor Twp + Range }  
105°12 R - 59<sup>7</sup> N 60°17½ W

Tap Con  
Remarked trees - draw 2P.

1111 3

178 8 ✓

611 9

170 9

59 3

C.S. 57/200

⑥

S 14° 30' 1/2 W

3

8° 45' L  
17° 28

18° 40

188<sup>5</sup>

S 5° 46' 1/2 W ✓

4

1° 58' L  
3° 54

10" 2

100<sup>3</sup>

S 3° 49' 1/2 W ✓

5

6° 11' L  
12° 22

11° 10  
-

299<sup>0</sup>  
113<sup>0</sup>  
952

S 2° 05' E

S 2° 28' 1/2 E ✓

6

10° 57' L  
21° 53

5' 2

176<sup>9</sup>

S 17° 18' E

7

46° 14' L  
92° 26

71° 35

248<sup>2</sup>

S 59° 2' E

S 59° 36' E ✓

8

62° 27' R  
74° 52

12' 2  
-

299<sup>0</sup>  
1366<sup>8</sup>

S 2° 55' W ✓

9

Tie

33° 39' R

168<sup>6</sup>

S 36° 38' W ✓

B.S. 1

9

4° 22' L  
8° 44

3°

177<sup>9</sup>

S 1° 27' E

10

89° 46' L  
179° 31

-

299<sup>0</sup>  
216<sup>4</sup>

N 89° E

N 18° 41' E ✓

11

+ 30  
0° 46' L  
1° 33

¢ - Creek N  
-

15° E

299<sup>0</sup>  
130<sup>4</sup>

N 88° 01' E

12

1196  
1205  
1300

178<sup>6</sup> ✓  
98<sup>6</sup>

Witness trees

Set No. 7

2° 13' 0" N 84° W 3°

Blaze  
= red  
B/E 10'

10' W. O S 20° E . 57<sup>8</sup>

mill

293<sup>4</sup>  
168<sup>3</sup>

176<sup>+</sup>

230<sup>8</sup> ✓

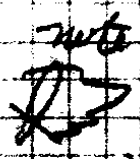
291<sup>9</sup>  
1366<sup>8</sup> } ✓ 1658<sup>7</sup>

1/4 For Survey? Marked N/S

30' W. O N 68° E

(Look about 340 East of tree for CP BT)

177<sup>2</sup>



Tie to SW cor C1

9 10° 0' L 140<sup>7</sup> 56<sup>1/2</sup> E 57° 05' E

515<sup>4</sup>

cor

429<sup>4</sup>

C.S. 5/58

①

note

at All cor of Creek is 125 So. of cor

Cabot Survey across so line 31

N 89° 32' E 5746<sup>5</sup> ft. set 1/4 cor

2752<sup>5</sup> West of A6 cor, sec 31

set O.P. 14" ash N 74° E 76<sup>5</sup>; 16" ash

N 59° W 547<sup>5</sup> ft. line three cent

sec S 30° 55' W 5032<sup>5</sup> ft. set 1/16

cor no. of so. side sec at 1258<sup>1</sup>

8" W.O. N 72° W 4<sup>0</sup> ft.

Reset comes bet 1+6, 18" Fir

1885; From 1/4 bet 6+1, 18" Fir, N 89° E

var 19 1/2° E 42° ch set just

from 1/4 just bet 6+31

S 1° 12' E 39<sup>45</sup> intersect E.g. line

just 35 links. set just from which

double fir 36" East 7 links

Survey for Mr. Fordney 1891

beg. at 1/4 bet 1+6 ch 19 1/2° E

N 89° E 22<sup>72</sup> set just. Th. South

20° set cor from which 6' Chinkapin

N 58° W 37 ch. th S 89° W 22<sup>72</sup> To

Top. line from which 30" Fir N 10° E 20 ch th

N. 20 ch to place beg. 45<sup>44</sup> ans

C.S. 5/28

⑧ 50 7-15

127  
300

637  
427  
210

325  
195  
195  
214.5

946  
579  
579  
637.5

# I B. Nichols Survey.

Legal notes 60  
Rings

1/2 day notes	20 miles	2 1/2
Cards		
8-9-10		
13		
Field note	2 1/2	

Mon. 20 Car 20 miles 1 da  
3 hrs O.T. So + East line D.L.C.

Thursday Looked for So 1/4 cor. Closed fence + turned the steel cor. cl.

Wed. Set NW cor. - NW cor. - Fence line W + Made set Coats cor.

Thurs. Cabot arrived, line fence, but cabot + Nichols - + from 1/16 to 1/4 cor. also seems to 1/4 cor.

Friday Dec. 5 + Traded land

T 295 127 W

576-7-8

24"	B.O.	S 34° E	100
30"	"	N 40° E	100
30"	"	N 39° W	179
36"	"	S 65° W	69

South bet 5 + 6

10<sup>+</sup> T<sup>up</sup> hill

20° T hill

41° 1/2 cor. 6" B.O. N 13° W 80

8" " N 82° E 52

81° cor

S 89° 45' E bet 6 + 7

43<sup>5</sup> 1/2 cor. mound

30° leave field

56<sup>25</sup> house 10, 56 ch 30 y line

68° Oak opening

85.58 ac cor

West side 31 - May be wrong

South 40° 1/2 cor. 10" W.O. N 75° W 375

214<sup>5</sup>

46<sup>50</sup> with timber 15" " S 20° E 966

637<sup>10</sup>

67<sup>24</sup> 2x Red fir

80° 1/2 cor 1-6 = 31-36  
15" B.O. N 46° W 142

17" " N 45° W 52

W 12 N 63° E 225

B.O. 20 N 71° E 110

9

T28 S R 7 W

189 1/2° E bet 30 + 31.

35° Enter old openings; 43° 1/4 cor.

18" B.O. 123° E 99; 10" B.O. 74° E 76 lks

North bet 31 + 32

30° Front hill; 40° 1/4 cor. 6" W.O. 75° E 270 lks

10" W.O. S 18 1/2° W 700 lks. = 132 ft

52° 91 Branch 10 mile creek

72° 12" B.O.

80° Cor 29-30-31-32, 24" B.O. 773° E 74

24" B.O. S 55° W 168 lks; 18" B.O. 780° W 27

24" B.O. S 30° E 63

1/4 bet 29 + 32 778° 35' W

at 33° 91 Branch 10 mile

40 27 70° W.O. 773° E 130; 18" W.O. S 43° E 74 lks.  
80.54 cor.

West side Sac. 6. South var 18" 1/4

40° 1/4 cor. 10" B.O. 774° E 23 lks

12" " S 58° W 46

41 56. bottom.

58 75 water house 0 60° W

80° Cor 1-6-7-12

15" B.O. 746° W 142 ?

12" " S 745° W 52

W.O. 2" 763° E 225

30 20 S 21° E 110

May be wrong

So side Dec 31  
N 89° 38' 1/2 W      var 18' 2

33 1/2 looking glass. Clock

40° N car

8" Maple N 85° W 29

15" Laurel N 5° W 75

61 1/2 left Bottom

8340 Top car

N 48° 1' 6  
W 2361 1/2

+

+

+

762 1/2  
W 5740 8

5125 1/2  
W 2749 8

31 32  
6 5  
00

C. S. File No.

5/28

(10)

178  
3  
534

310  
6  
1800  
1860  
20460

9.5  
6  
570  
57  
6270

Set 10 N 19° E 40' To Ch. Cor

N 378 E 139

9 1/2	S 2987 1/2	5636 1/2	
	1776	4'	
M	S 3165.0	W 5632.0	N 614 1/2
	378	13.0	W 5576.8
	3127.2	5619.1	

Cor. ADUC as set S 3127.2 = S 3747' - 85  
 W 5619.1 462  
 Bearing within Ch. - S 0° 40' W  
 .9116

SW Ch. cor 37

Prove I.P

20' B.O N 43° E 1136

9 1/2 S 2987 1/2 W 5636 1/2  
 10' 10'

Wm. M<sup>c</sup> Cullough

Claim 37 T29 SR 7W 249.80 acres  
4 56 T28 SR 7W 70.20 acres

Beginning at point 2.50 chs. E of  $\frac{1}{4}$   
sec. post. on W. boundary of Sec. 6  
T29 SR. 7W. set post from which

a W. Oak 12 in dia bears N. 80 E. 157 lbs  
East star. 19° E.

3.10 - a fir 30 in dia.

9.50 - Looking glass Creek 50 ft wide N.E.

14.50 - Leave bottom enter upland prairie

49.12 - Mc Cullough house bears

N. 10 E. 10.00 chs.

70.00 - set post

a B. Oak 8 in dia. N. 55 W 162 lbs  
North.

20.00 - set post. trench stone center.

West

20.00 - " " " " " "

North

21.96 Intersect trap line between  
Secs. 6 & 31, 13.33 chs. E  $\frac{1}{4}$  sec post.

28.50 Leave prairie, enter creek bottom

(10) 35.00 Looking Glass Creek 70 lks wide 71.20° E

36.00 set post.  
An Ash 14 in dia S 60° E 36 lks

West.

11.96 A pine 20 in.

15.00 Leave creek bottom enter oak & pine

26.50 Mill Creek 25 lks wide S.E.

33.00 Leave creek enter prairie

40.00 foot hill

46.00 summit hill

50.00 set post.

South A.B. Oak 4 in. S 10° E. 124 lks

56.18 to place of beginning - 370°

No intersection noted the trap  
cor. having been moved

Notes Location "4 Post 6 + 31

Coord is  $\frac{S 375}{W 3150}$

approx Cl. Cor. is  $\frac{N 560}{W 2300}$

340 ft East of "4 Post for SW cor Cl.

141.98  
883  
133.14

100  
100  
83.46

386  
193

187.9  
220  
1.7

22.4

103.17

11.96  
7176  
7176  
78936

3862  
1931

193.05  
142.87  
133.17

84.2  
6.95

183

1.3

326

(12)

N88°01' E

12

0°04' L  
0°08

3 1/2

207 1/2

N88° E

N87°59' E

13

+ 15 ft. Cor. Waters Cl.

3°35' R  
7°11

442.8  
300

S88°29' 1/2 E

14

1°41' L  
3°23

738.2  
1322.7

N89°51' E

15

By fence + 50 To E. Co. Road N+S

6°57' R  
13°54

647.0

S83°10' E S83°12' E

16

Tie

71°34' L

N75°14' E

cor. S E. Cl. 37 > 119.8

Found stump of O.B.T. in ditch rolled down hill. Cor. as set is in old fence line & checks with Cl. Notes for cor. North.

16

84°50' L  
169°38'

185.0

N12 1/2 E

S83°12' E  
N110°59' E

17

18°05' L  
36°10

6 1/4

300.0  
57.9

N6°00' W

18

By creek  
6°12' R  
12°45

4.0

300.0  
38.9

N0°16 1/2 E

19

Fence line

2°07' L  
4°15

6.0

300.0  
119.7

N1°05' W

N1°51' W

20

207<sup>0</sup>

742<sup>8</sup>

2060<sup>7</sup>

647<sup>0</sup>

119<sup>8</sup>

87  
70  
19

Cl. 37 Ag car

Drive L.P.

Marked g.w.O N85<sup>1</sup>/<sub>2</sub>° W 42<sup>3</sup>

g.w.O ~~82<sup>3</sup>~~ 42<sup>3</sup>  
3 59<sup>8</sup> 168<sup>3</sup>

Coats, Capt. McBeck witness

185<sup>0</sup>

298<sup>2</sup>  
- 57<sup>9</sup>

336<sup>1</sup>

299<sup>3</sup>  
- 38<sup>9</sup>

338<sup>2</sup>

# 19 is 3° So. F. ...

1298<sup>2</sup>  
119<sup>7</sup>  
417<sup>9</sup>

C. S. File No.

5/2

(13)

20					N1°51'W
Tie	16°24R	-	143 <sup>2</sup>		N14°33'E
Cor. Cl.	37				
	Found Orig Rock with one				
	Marked C.S.				
	Marked 12" B.O. <sup>75<sup>3</sup> level</sup> 285° @ 15° N45°E Var. 21°10'				
20	44°25 <sup>L</sup>	-	300°		N1°51'W
	88°48	-	352 <sup>4</sup>		N46°15'W
21	13°47R				
	27°32	-	233°	N32°W	N32°29'W ✓
22	19°43L	12°25	175°		
	39°27	-	300°		N52°13'W
			257		
23	10°26R	10°	300°		
	20°52	-	170 <sup>5</sup>	N42°W	N41°12'W
24	46°12R	5°	300°		
	92°25	-	300°	N5°E	N4°26'E
			59°		
25	H.W.				
	10°26R	-	300°		
	20°53	-	226 <sup>3</sup>		N14°22'E
26					
Tie	77°47L		224 <sup>L</sup>		N62°55'W
Cl. Cor	26°25L				
26	53°29	-	755 <sup>4</sup>		N14°52 1/2'E
					N11°53'W
27	62°47R				
	115°32		300°		
			42 <sup>L</sup>		N50°54'E
Stump. Hub Tie in					

226

N.E. cor Cl.

143<sup>2</sup>

went to 30' y Pine  
Marked 3 blazes on each side

ran N 89° E V 21° 10' E

789<sup>ft</sup>

256<sup>0</sup>  
234<sup>0</sup>  
181  
71<sup>0</sup>  
47<sup>4</sup>

702

657<sup>↓</sup>

233<sup>0</sup>

at 298<sup>0</sup> <sup>ad</sup> ~~hwy~~ <sup>hwy</sup>  
4<sup>0</sup> So

170<sup>0</sup>  
325<sup>0</sup>

4<sup>0</sup> offset No.

146<sup>0</sup>

258: 789: 4 X  
10.5 Mod 6 So 10E

248<sup>0</sup>  
357<sup>0</sup>

Set SM for N.E. Cor Cl. 56  
Cor is in Creek, B.T. washed out  
SW cor of South Pier of <sup>concrete</sup> Bridge over L.G. Creek is

526<sup>3</sup>

N 43° E 196<sup>0</sup> ft

234<sup>0</sup>

Cuts Cor. by Michael & Mc Bee  
18" W. Fir 354° W 68<sup>5</sup>

755<sup>↓</sup>

342<sup>0</sup>

C. S. File No. 5/10

(1)

ST P. site one Badl

49° 57' 14  
99° 53

N 50° 54' E  
S 79° 09' 1/2 E

set stump. BS 27.

S 62° 37' L  
~~27° 53'~~

~~0.111~~

urng  
N 38° 13' 1/2 E

A  
11° 11' L

S 11° 30' E

stump.

89 60

LAT 43° 05  
~~46° 5'~~ col lat.

3 30 P.M. 21 1922

33.6  
11.3  

---

100.9  
36.96  

---

379.68  
360  

---

17

19° 48' 28 ✓  
+ 6 19  

---

5 190 54 47  
+ 5 30  

---

19° 49' 17

Solar Bearing = S 11° 11' E

C. S. File No.

5/28

(15)

Partially R.F.

51044 W

~~1100~~ cor. Cl. N619<sup>1</sup>/<sub>2</sub> - W 5576<sup>8</sup>

6700  
140  
4557

#15 is N 590<sup>4</sup> W 5647<sup>8</sup>

go. N 29<sup>2</sup> = 436 N67°41' E  
E 71<sup>2</sup> 76.8 ft.

1/16 cor. By Road N ~~1100~~ W 2703<sup>4</sup>

set No. 7 hub + #10 corner survey = <sup>1540<sup>2</sup></sup> W 2489<sup>4</sup>

go. S ~~400~~ W 74<sup>2</sup> = 527° 15' W  
156° 553<sup>2</sup> 468<sup>0</sup> ft

X Cl. + 1/16 line N632° W 2732<sup>2</sup>

# 8 is N1218<sup>8</sup> go S 82° 24' W from 1/16 cor.  
W 3144<sup>2</sup>

or, S ~~1100~~ go S 77° W 492<sup>2</sup>

set 1/16 from #18

cor. is N1124<sup>4</sup>  
W 2703<sup>4</sup>

# 8 is N1218<sup>8</sup>  
W 3144<sup>2</sup>

S 77° 56' E

go S 94<sup>4</sup> = 4678<sup>2</sup>  
E 440<sup>9</sup>

go 450<sup>2</sup>

set 8 site 9 S 70° 45' W 31° 19' R

300 7° 645  
2978 3023

MM of 56

30" B.O S 1°30' E 84<sup>2</sup>

● 30" Pine N 42½ W 94<sup>8</sup>

Iron Bar, for COV

Coast. Coats & Nichols

450<sup>9</sup>  
362<sup>2</sup>  
88<sup>6</sup>

142<sup>2</sup>  
264<sup>2</sup>  
228<sup>2</sup>

450<sup>9</sup>  
64<sup>1</sup>  
386<sup>8</sup>

492<sup>4</sup>  
414<sup>4</sup>  
78<sup>0</sup>

S  
577° 56' E  
2 24  
80 20

S

264<sup>2</sup>  
150<sup>2</sup>

S 2°24' W

C. S. File No.

5/28  
128

(16)

2077  
160  
477

Set  $\frac{1}{4}$  cor Bet 6+1

Set as per Hawthorns Survey.

No Trees to be found

Drove I.P. Marked

14" W.O S  $41\frac{1}{2}$  W 26 $\frac{1}{2}$  ft.

30" W.O Old N  $85^{\circ}$  E 47 $\frac{1}{2}$  ft

Old Gloze Fences Pipe

Coots, Ireland, Michals

coincides with old Rail Fence line

91.1 line  
Intersection Ch 56 +  $\frac{1}{16}$  line

Set I. Pipe. Marked

18" W.O S  $80^{\circ}$  W 33 $\frac{1}{2}$  ft.

$\frac{1}{16}$  cor. Drove I. Pipe in Road

~~6" W.O N  $57\frac{1}{2}$  E~~

10" Fir N  $57^{\circ}$  E 35 $\frac{1}{2}$

1218.0  
1124.4  

---

93.6

2703  
83  

---

2786

C.S. File No.

~~5/28~~

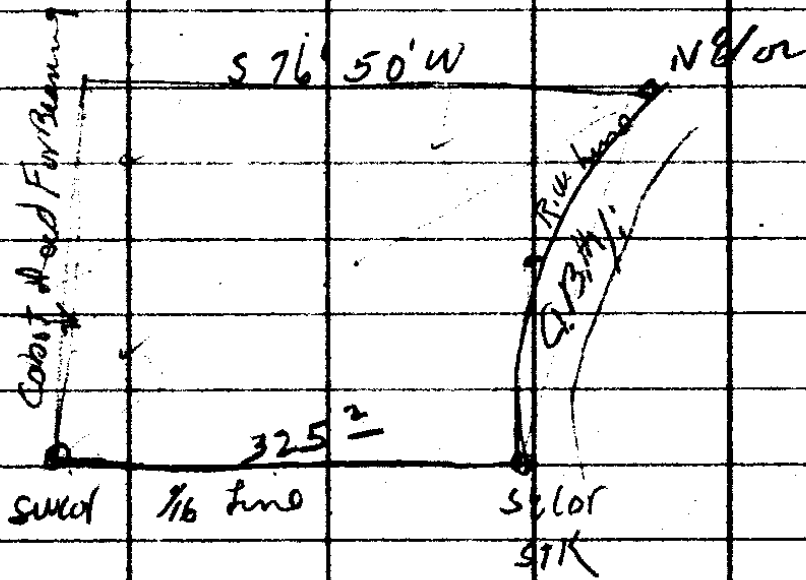
(17)

Cabot, acreage of 3 Acre Tract

SW cor. set 571K

14" Fir

N 89° W 6 1/2 ft



Tie to 06. cor

27 sit. stump p

N 50° 54' E

52° 03' L

127°

S 1 1/2° E

S 1° 09' E

SE cor

27

149° 15' R

241°

N 70° E

N 70° 09' E

NE cor

299

172

127

360

320

72

108

115-200

15160

C.S. File No.

5/28

(18)

# Nichols

Sec. 5 NW + NW.

Start

34

3° 0' L  
6° 0'

10°

98°

S84° E

S82° 12' E

S85° 12' E

1

57° 23' R  
14° 42'

34° 05'

300°

08

S27° 47 1/2' E

2

26° 58' L  
53° 52'

31° 75'

32° 25'

300°

74°

S55° E

S54° 43 1/2' E

3

57° 35' L  
115° 09'

11" 2

165°

N67° 42' E

4

22° 38' R  
45° 15'

21° 20'

82° 5'

S89 1/2' E

S89° 06 1/2' E

5

Rock  
28° 04' L  
55° 05'

4" 2

195°

N62° 17' E

6

16° 15' R  
32° 30'

-

559°

N78 1/2' E

N78° 32' E

7

By Big Laurel  
32° 59' L  
65° 57'

Top Hill

189°

N45° 33 1/2' E

8

2° 16' R  
4 35

7 1/4

276°

N47° 51' E

9

34° 35' R  
69° 12'

5 1/2

195°

N82° E

N82° 27' E

10

85° 17' L  
50° 30'

11° 40'

202°

N57 1/2' E

N57° 12' E

11

96<sup>5</sup>

249<sup>3</sup>

256<sup>0</sup>  
62<sup>5</sup>

162<sup>4</sup>

196<sup>8</sup> ✓

194<sup>4</sup>

559<sup>4</sup>

189<sup>2</sup>

273<sup>8</sup>

197<sup>8</sup>

198<sup>0</sup>

85012 9

5724<sup>1/2</sup>

2747<sup>1/2</sup>

26 56

54 53<sup>1/2</sup>

57 34<sup>1/2</sup>

112 18

67 42

C. S. File No.

5/38

(19)

5°06R  
10°14

7 1/2

286<sup>L</sup>

N62E

N57°12'E

N62°19'E

0°34R  
1°10

7°

192<sup>L</sup>

N67°54'E ✓

Set 9

112°30R

100<sup>S</sup>

S47°5'

N47°51'E

100<sup>S</sup>

S20°E

S19°39'E

1/4 Cor

17<sup>L</sup>

S75°E

S75°E

1/4 Cor

Bet 5 + 32

Set at 1/4 Cor. 18" <sup>B.O</sup> sand 43° N55°W  
20" sand S34°E 20<sup>S</sup>

2836 ✓

1919 ✓

G. S. File No. 57/28

(20)

Nichols

Traded to

set 15 70

N 70° 03'

E 88'

drive I.P.

Set 15

90° 12' L

300°  
470°

N 1° W

N 89° 51' E

N 12.0° W

a.

76<sup>3</sup>

N 71° 44' E

Cor. between Co. Graded Land  
and Pipe.

6" W.O. S 43° 20' W

18<sup>2</sup> ft

Set 16

17° 48' L

297<sup>4</sup>

S 83° 12' E

27° 26' R

10°  
15°

300°  
146<sup>9</sup>

S 73° 16' E

B

Set 19

89° 28' R

300°  
571<sup>4</sup>

East

N 10° 16' 2" E

N 89° 44' 2" E

A

4<sup>4</sup>

N 7° 03' E

Cor. Pipe at X sec line

a 14" W.O.

N 79° E

503 ft

1/4 Cor Bet 5+5 is  
not to be used

90 M 1°24' 962°

300 @ 11°

152 @ 32 1/2

962  
8130  
134

1140 18 1/2

45° W

So →

Cor Drive J. Pipe 1/16 Cor  
Marked

8" B.O S 46° W 125

bit 5+6

208°

128° 631°

182°

108° 929°

42°

1 1/2



CS FILE FOLDER

CONTAINS

MORE

INFORMATION