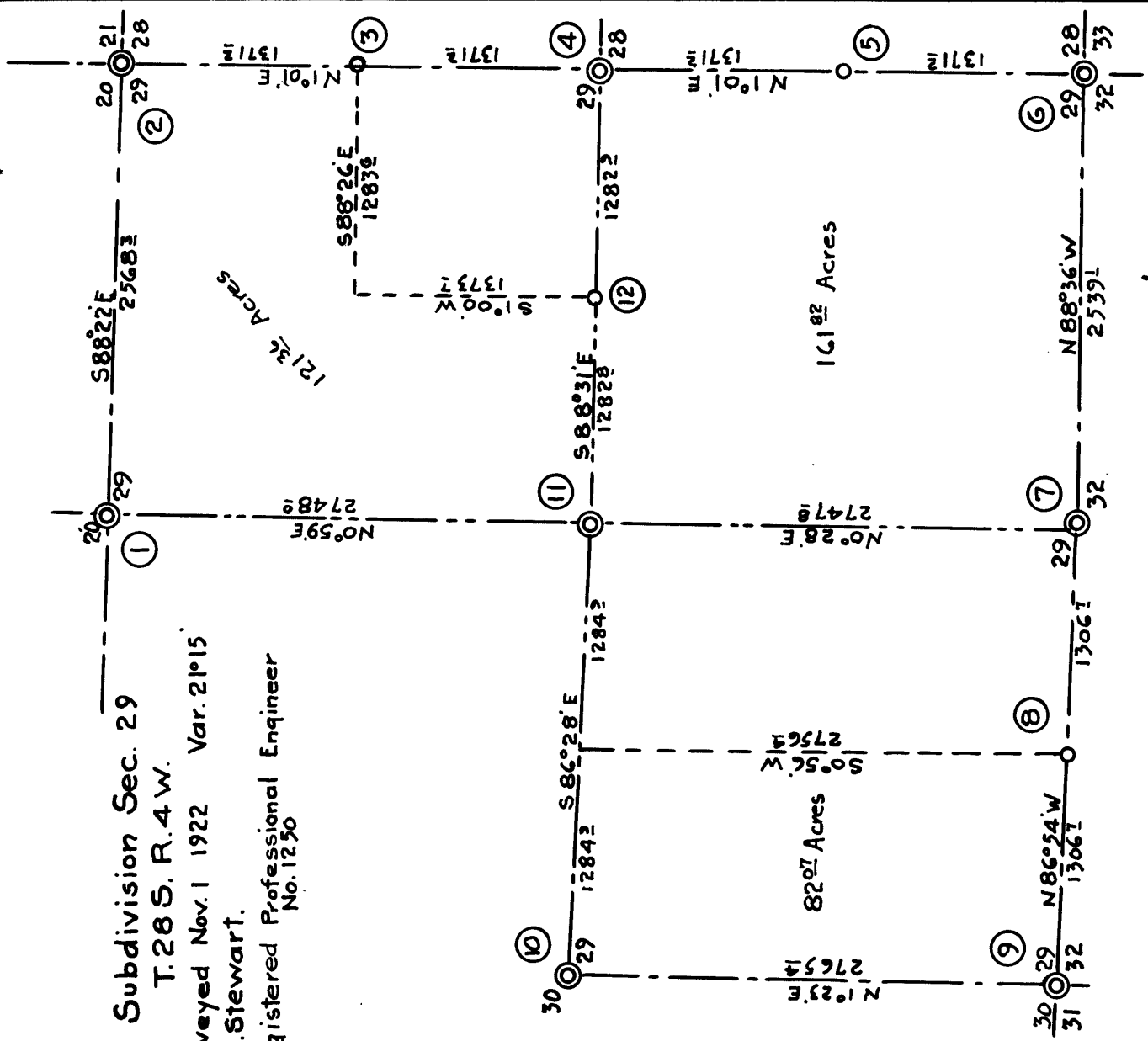


Subdivision Sec. 29  
 T. 28 S. R. 4 W.  
 Surveyed Nov. 1 1922 Var. 21° 15'  
 G.G. Stewart.  
 Registered Professional Engineer  
 No. 1230

No.	Kind	Corner.	Trees
1	1/4	I. Bar	24' Fir S10°W 42° 20' Cedar N12½°W 316
2	Sec. Corner	Post	36' Fir N5°E 46° 18' Yew S47½°E 716 36' Fir S24°W 128 36' Fir N45°W 721
3	1/16	Stake	24' Laurel N70°W 224
4	1/4	Pipe	18' Cedar N43½°W 593 24' " S63°W 1447
5	1/16	Stake	30' Fir N49°E 490
6	Sec. Cor.	Tree	Original B.Ts
7	1/4	Post	48' Fir N23½°W 303 12' " S9°E 407
8	1/16	Stake	14' Cedar N7½°E 1340
9	Sec. Cor.	I. Pipe	8' Fir S15½°W 60 18' Cedar N30½°W 468 18' " S87½°E 495 18' Fir S83°E 528
10	1/4	Post	30' Y. Pine S34°E 303 14' Cedar S15½°W 430
11	1/4	Pipe	18' Fir N88°W 904 24' " S57½°E 526
12	1/16	Post.	24' Laurel S6°W 90



$$\begin{array}{r} 21 \\ 183 \\ \hline 2653 \end{array}$$

Beck  
 Copeland  
 Knight  
 Lander  
 Flavi Anglen

40

$$\begin{array}{r} 702 \\ 811 \\ \hline 919 \end{array}$$

$$\begin{array}{r} 21 \\ 11 \\ \hline 97 \end{array}$$

$$\begin{array}{r} 5711 \\ 2159 \\ \hline 7870 \\ 6275 \\ \hline 14085 \end{array}$$

C.S. 5/27

$$\begin{array}{r} 8572 \\ 6567 \\ \hline 6712 \\ 525 \end{array}$$

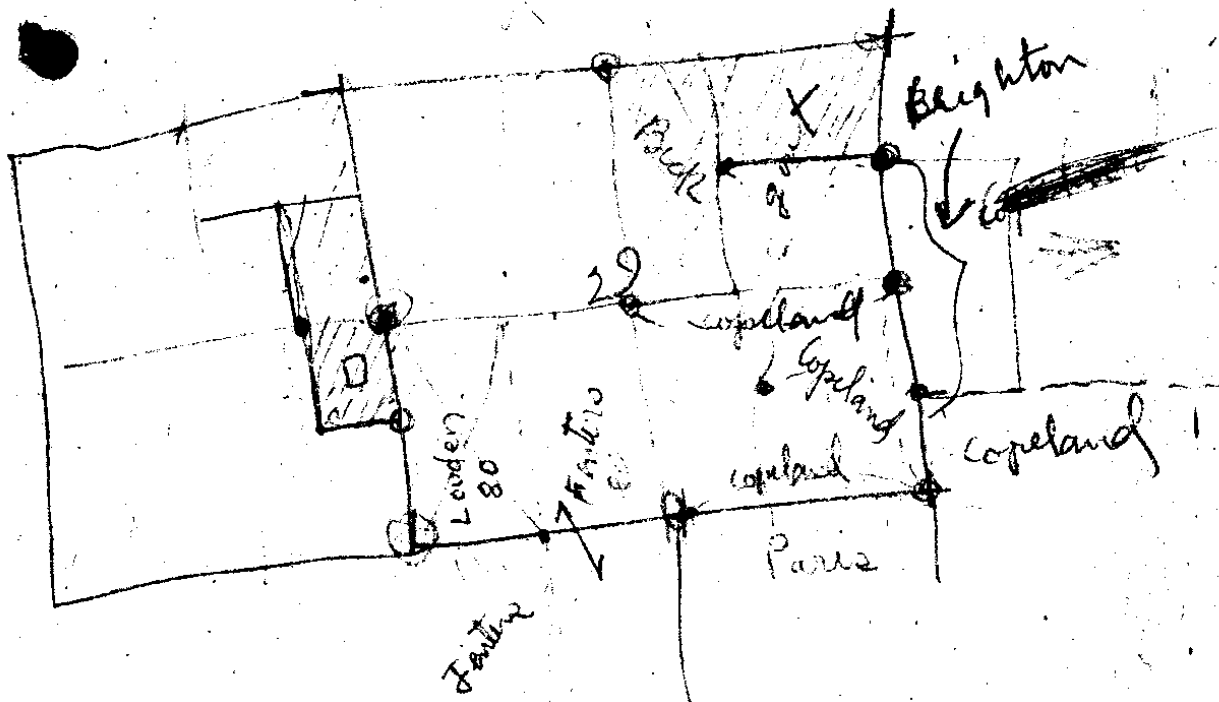
Lucas

20

21



London - Thomas, May  
 Anglen - Copeland - Layton



get acreage on Copeland,  
London, Back

C. S. File No.

5/27

C.S. 97

①

Start legal survey Nov. 1 - 1922

Sec. 29 T 28 S R 4 W.

No legal Notice Given. Parties accept Personal Service Notice.

We agree to accept survey made by Deputy Co. Surveyor G.G. Stewart - Nov. 1 1922 as legal survey and waive the customary legal notice.

O. G. Seighton  
L. Paris  
Frank Beck

G. A. Popeland  
F. M. Louder

W. J. Johnson by J. W. [unclear]

F. Fenters refused to sign statement.

I went to Sec. Cor. 28-29-32+33 in good shape.

		12°	300°	N 1° E	N 1° 00' E
		-	51 <sup>3</sup>		
1			60°		
	2° 25' L	1720 -	272°	N 1° 15' W	N 1° 25' W
		4 1/2	300°		
2		19 2 -	300°		
		17 3 -	107°		
		-	32 <sup>1</sup>		

2934 ✓ 3447  
51 -

60<sup>0</sup>  
7597  
299  
2878  
1008  
32-

1034.5

C.S. 5/27

2

2

6°20' R

-

94<sup>8</sup>

N5°E

N4°55'E

3

2°50' R

11°20'

300<sup>0</sup>

191<sup>0</sup>

N7<sup>3</sup>/<sub>4</sub> E

N7°45'E

4

19°17' L

14<sup>10</sup>

57<sup>0</sup>

290<sup>0</sup>

N7°E

N11°32'W

5

19°17' R

6°10'

300<sup>0</sup>

169<sup>3</sup>

N6<sup>1</sup>/<sub>2</sub> E

N7°45'E

6

8°52' W

15<sup>1</sup>/<sub>2</sub> W

187<sup>0</sup>

1°W

N1°07'W

7

11°11' L

21<sup>1</sup>/<sub>2</sub> W

280<sup>9</sup>

N12<sup>1</sup>/<sub>4</sub> W

N12°18'W

8

13°38' R

11<sup>1</sup>/<sub>2</sub> W

17<sup>0</sup>

N1<sup>1</sup>/<sub>2</sub> E

N1°20'E

9

1°

=

10<sup>0</sup>

N3°E

N3°05'E

10

9° L

16°30'

122<sup>2</sup>

N5°45'W

11

R

10

130<sup>0</sup>

N0°48'E

12

15°54' R

8°30'

205<sup>0</sup>

N20°E

N19°45'E

94<sup>8</sup>

300<sup>2</sup>  
187.3  
38

525.4

553  
280.2

33.0

298<sup>3</sup>  
161

467.4

180<sup>0</sup>

261<sup>8</sup> ✓

175<sup>6</sup> ✓

297.7  
40.1

117<sup>0</sup> ✓

224<sup>5</sup>

218<sup>7</sup>

C.S. 5/27

3

13

21°06' W

9

176<sup>2</sup>

N72° W

N19°45' E ✓

N1°21' W

14

10°03' L

-

138<sup>2</sup>

17 W

N12°14' W

15

9°38' R

-

146<sup>2</sup>

2 1/2 W

N2°46' W

16

14°07' R

11°

177<sup>3</sup>

1 1/2 E

N11°21' E

17

5°01' W

10 3/4

160<sup>2</sup>

6 1/2 E

N6°20' E

18

1°15' L

15 5/8

138<sup>2</sup>

5 1/2 E

N5°05' E

19

13°57' L

16 1/4

177<sup>2</sup>

13 1/2 W

N13°52' W

20

34°08' W

9°10'

107<sup>2</sup>

N21°06' E ✓

21

-

-

15

N70° W

See Col. Oct 20-21-28-29

Found 15.15 ft. 16.5 ft. 17.5 ft. 18.5 ft. 19.5 ft. 20.5 ft. 21.5 ft. 22.5 ft. 23.5 ft. 24.5 ft. 25.5 ft. 26.5 ft. 27.5 ft. 28.5 ft. 29.5 ft. 30.5 ft. 31.5 ft. 32.5 ft. 33.5 ft. 34.5 ft. 35.5 ft. 36.5 ft. 37.5 ft. 38.5 ft. 39.5 ft. 40.5 ft. 41.5 ft. 42.5 ft. 43.5 ft. 44.5 ft. 45.5 ft. 46.5 ft. 47.5 ft. 48.5 ft. 49.5 ft. 50.5 ft. 51.5 ft. 52.5 ft. 53.5 ft. 54.5 ft. 55.5 ft. 56.5 ft. 57.5 ft. 58.5 ft. 59.5 ft. 60.5 ft. 61.5 ft. 62.5 ft. 63.5 ft. 64.5 ft. 65.5 ft. 66.5 ft. 67.5 ft. 68.5 ft. 69.5 ft. 70.5 ft. 71.5 ft. 72.5 ft. 73.5 ft. 74.5 ft. 75.5 ft. 76.5 ft. 77.5 ft. 78.5 ft. 79.5 ft. 80.5 ft. 81.5 ft. 82.5 ft. 83.5 ft. 84.5 ft. 85.5 ft. 86.5 ft. 87.5 ft. 88.5 ft. 89.5 ft. 90.5 ft. 91.5 ft. 92.5 ft. 93.5 ft. 94.5 ft. 95.5 ft. 96.5 ft. 97.5 ft. 98.5 ft. 99.5 ft. 100.5 ft.

36" Fir N5° E 46<sup>3</sup>

10" Fir N41° E 73<sup>2</sup> @ 13<sup>2</sup> - 71<sup>6</sup>

3" Fir N24° W 12<sup>2</sup> - 6<sup>2</sup>

25" Fir N45° W 72<sup>2</sup> - ft

set sq stake

2

173<sup>8</sup>

174<sup>0</sup>

157<sup>2</sup>

136<sup>2</sup>

189<sup>7</sup> ✓

106<sup>3</sup>

C.S. 5/27

5745' u

(2)

Frank Beck et al.

(3)

Set 1/16 cor No. 4 1/4 Cor East side 29

Set sq. stk. marked 24" laurel N70°W 22<sup>4</sup> ft

1/4 cor. set Midway between 1/2 sec. Cor

Drove 1 Pipe 18" Cedar N43<sup>1</sup>/<sub>2</sub>°W 59<sup>5</sup> ft

24" Cedar S63°W 144<sup>7</sup> ft

(4)

1/16 cor. So. of 1/4 cor

Set stk. Marked 30" Fir N49°E 49<sup>0</sup> ft

Set at this corner and ran a line

S 89°00' E 1/2 sec. line

(5)

Went to sec. Cor 21-22-33 site 1 N1°00' E

101°58R 2 1/2 287<sup>6</sup> N77°W N77°02'W

So. line sec. 29

1

15°29L - 6°20 300<sup>0</sup> 115<sup>4</sup> S88°W S87°29'W

2

4°12'R - 6°10 292<sup>0</sup> 300<sup>0</sup> 510<sup>5</sup> S87°20'W N88°19'W

3

10°38L 23°38 298<sup>3</sup> S80°N S81°03W

4

8 40 55 u  
79 10  
84, 25

287  $\frac{1}{2}$

298.2  
115.4

413.6

290.3  
810.5 }

1100.8

278  $\frac{2}{3}$

CS. 5/27

5

4	<del>33° 42' 0</del> 16° 45' R				881° 03' W
	16° 55' R 33° 42	35° 40	152 <sup>4</sup>		N82° 06' W

5	15° 34' L 33 31° 11	use 31° 11 19° 45	(check) 105 <sup>5</sup>	S82° W	S82° 18' 1/2 W
---	------------------------	----------------------	-----------------------------	--------	----------------

6	17° 02' R 34° 01	21°	198 <sup>4</sup>	N81° W	N80° 41' W
---	---------------------	-----	------------------	--------	------------

7	15° 49' L 31° 47	36° 2	89 <sup>5</sup>		S83° 25' 1/2 W
---	---------------------	-------	-----------------	--	----------------

8	13° 09' R 26° 15	32° 2	130 <sup>8</sup>	N84° W	N83° 27' W
---	---------------------	-------	------------------	--------	------------

9	10° 26' L 2° 50	-	68 <sup>1</sup>		N84° 52' W
---	--------------------	---	-----------------	--	------------

10	1° 18' 0° 38' R	Top hill 15° W	68 <sup>6</sup>	N83° W	N84° 13' W
----	--------------------	-------------------	-----------------	--------	------------

11	6° 34' L 13° 12	27° 4	210 <sup>2</sup>	S89° W	S89° 10' 1/2 W
----	--------------------	-------	------------------	--------	----------------

12	6° 14' L 12° 34	27° 00	241 <sup>0</sup>	S83° W	S82° 53' W
----	--------------------	--------	------------------	--------	------------

13	1° 27' L 3° 01	10° 40'	69 <sup>4</sup>		S81° 22' 1/2 W
----	-------------------	---------	-----------------	--	----------------

14	25° 05' R 50° 07	26° 25	707 <sup>1</sup>	N74° W	N73° 34' W
----	---------------------	--------	------------------	--------	------------

15

125<sup>3</sup> ✓

49.3 ✓

185<sup>2</sup> ✓

# 8 is 2<sup>o</sup> Due West 1/4 cov  
Bet 29 + 32.

71<sup>9</sup> ✓ Found 0.13 Tex Laurel.  
1st imp. of Fir

110<sup>3</sup> ✓ Set Sq. Cedar Pest.

68<sup>1</sup> Marked. 48" Fir N 23 1/2° W 30<sup>2</sup> ft.  
15" Fir S 90° E 40<sup>2</sup> "

66<sup>2</sup> ✓

186<sup>9</sup> ✓

222<sup>4</sup> ✓

68<sup>2</sup> ✓

185<sup>4</sup> ✓

150 116<sup>4</sup> 14<sup>2</sup>  
138 14<sup>2</sup>  
165  
17<sup>2</sup>  
33.7

7

C.S. 5/27

①

15

3° 28'  
1° 40' L

19 1/2  
3 1/2

146°  
300°  
27°

N76° W

N73° 34' W  
N75° 18' W

16

4° 46' L  
9° 41'

20 1/2

300°  
34°

N80° 08' 1/2 W

17

7° 21' L  
14° 44'

19° 10'

161° 8'

N87° 10' W

N87° 30' 1/2 W

18

8° 13' L  
16° 28'

12°

238°

S84° 15' 1/2 W

19

2° 55' L  
5° 50'

-

122° 8'

S81° 1/2 W

S81° 20' 1/2 W

20

8° 49' R  
17° 40'

12° 40'  
13° 40'

184° 0'  
247° 8'

N89° 50' W

N89° 47' 1/2 W

21

10° 59' L

-

27° 1'

S67° 40' W

S69° 22' 1/2 W

Cor

Went Cor 29-30-31-32 Found  
2 O.B.T.s and 2 stamps. Do notches for bearing  
Doric I. type spiked.

8' to S15° 1/2 W 6° 41'

13' Cedar N30° 1/2 W 46°

18' " S77° 1/2 W 20°

17' " S77° 1/2 W 20°

②

1376 ✓

2996 ✓  
279

2810 ✓

344 ✓

4651 ✓

3151 ✓

1528 ✓

2330 ✓

1228

1795 }  
2408 }

4203

274

45  
45  
405

30

66

107

110

110

110

528

445

1023

CS 5/27

⑦

21

85°33  
171°00

11½

75<sup>8</sup>

N4°W

22

$\frac{1}{16}$  cor West of lot  $\frac{29}{32}$   
Set STK. 14' cedar N  $13\frac{1}{2}^{\circ}$  W 139' ft

(8)

C.S. 5/27

(8)

7th Cont. Sec.

1	0° 16' L 0° 35'	2 3/4	2840 2840 2294	S 85° W	S 7° 55' W S 85° 24' W ✓
2	22° 45' R 45° 22'	-	630 300 252	N 73° W	S 85° 06 1/2' W N 72° 11 1/2' W ✓
3	1° 29' L 0° 01'	4 1/2	2490 58	N 73 1/4° W	N 73° 42' W
4	19° 36' L 0° 16'	8 1/2	2730	S 86 1/2° W	S 86° 40' W
5	3° 20' L 6° 39'	20° 25' 10° 15'	3000 2810	S 83° 25'	S 83° 20 1/2' W
6	7° 26' R 14° 44'	-	3680	-	N 89° 17 1/2' W
7	6° 28' R 13° 40'	-	2720	N 85° 20' W	N 82° 29 1/2' W
8	3° 29' R 6° 52'	-	1240	N 79° W	N 79° 08 1/2' W
9	17° 49' L 0° 46'	19°	2920	S 87° W	S 88° 05 1/2' W
10	0° 10' R 0° 13'	19° 05'	2490	-	S 88° 12' W
11	5° 46' R 11° 25'	22° 55'	1110	-	S 86° 05 1/2' W ✓

$$\left. \begin{array}{r} 284^0 \\ 227^4 \end{array} \right\}$$

$$359^4$$

$$\begin{array}{r} 288 \\ 58 \end{array}$$

$$\left. \begin{array}{r} 281,2 \\ 276,8 \end{array} \right\}$$

$$511.4$$

$$359^4$$

$$388^2$$

$$303^8$$

$$270^8$$

$$558^0$$

$$368^3$$

$$272^0$$

$$124^4$$

$$276.5^v$$

$$281^2$$

$$102^3$$

$$\frac{276.5}{276.5}$$

C.S. 5/27

9

12

0°58' L  
1°59'

11°

209<sup>6</sup>  
-

N 86°05 1/2 W  
N 87°09 W

13

5°13 R  
10°02

2°

199<sup>9</sup>  
-

N 82° W  
N 82°04 W

14

4°49 L  
9°45

17 1/2

300<sup>0</sup>  
34

N 86° W  
N 86°56 1/2 W

15

0°37 R  
0°27

18 2/5

249<sup>5</sup>  
-

N 86°33 W

16

2°40 3/4 L  
29°17

76 1/10

164<sup>6</sup>  
-

S 70° W  
S 68°48 1/2 W

17

8°00 R  
15°59

-

138<sup>2</sup>

S 76°48 W

18

7°40 R  
15°22

16°10

195°

S 84°29 W

19

99°46 R  
94°15

22 1/5

160<sup>2</sup>

N 4°08 E

20

Distance to Top of ... 265 ft  
1/4 cor. bet ... a 30. Found 15" 60  
Scribble bears S 75° E 19 8  
Old house corner S 62° W 26  
Marked 30" y. Pipe S 34° E 30 2 ft  
4 Cedar S 15 1/2° W 27 2 ft

10

421  
431

3816

30  
18

11/11

205 I ✓

199 9

286 1 ✓  
3.4

236 2 ✓

147 1 ✓

128 2

187 2

153 1

20  
20  
20  
20

10  
10  
10

20  
20

200  
81

C.S. 3/27

10

North thru Sec 29  
set to site 7

	145° 10' L 290° 28		204 <sup>4</sup>	N55° W	N89° 17 1/2' W N54° 31 1/2' W
1	53° 50' R 107° 34		444 <sup>8</sup>		N0° 44 1/2' W
2	40° 31' L 70° 55		300° 201°	N41° E	N39° 43' E
3	20° 51' L 41° 27	3° 2 4° 2	300° 300° 364°	N18° 50' E	N18° 49 1/2' E
4	73° 24' L 43° 55'	10° 40 14 1/2	300° 179°	N53° 2' W	N51° 38' W
5	3° 20' L 6° 45	15 1/2	300° 223		N52° 20' W
6	33° 21' R 66° 34	22° 40	215 <sup>5</sup>	N74° 4' W	N74° 43 1/2' W
7	40° 47' R 21° 28	23 1/2	204 <sup>5</sup>	N18° E	N16° 00 1/2' E
8	9° 02' R 18° 02		19°		N7° 01 1/2' E
9	9° 36' R 20-27		30°	N31° E	N34° 37 1/2' E

1/4 Bet

267  
96

296

200  
167  
133

200  
167  
133

200  
167  
133

299<sup>4</sup>  
299<sup>1</sup>  
364<sup>0</sup> } 962.5

21<sup>2</sup>  
32<sup>4</sup>  
69<sup>9</sup>

294.8  
173.4 } 468.2

(1)

1/4 cor Bet 20 + 29 Found 20 BT

311<sup>4</sup> The Laurel was noted + For  
Burner's f. Set I, Bar plane  
Trees checked  
198<sup>9</sup> Set 29. Post  
Rem. for For 3000 ft

187<sup>5</sup> 20' Cedar N125W 316 ft  
Dist - 100 ft

C.S. 5/67

(11)

1/2 cor East of Cent Sec.  
Set stk - cedar marked  
2 1/2" borel S 6° W 90 ft

(12)

Center Sec. 20  
Drove 6 1/2 dip  
Marked 18" Fir N 88 1/2° W 90 1/2  
2 1/2" Fir S 57 1/2° E 52 1/2

(11)

Bill

Self	50. <sup>00</sup>
Car	6. <sup>00</sup>
Mike	16. <sup>00</sup>
Rec	1. <sup>50</sup>
B Prints	.60
	<hr/>
	74. <sup>10</sup>
	<hr/>
	14. <sup>80</sup>

Paul Beck  
Copeland  
Brighton  
Anglen

Hayden  
North Creek

CS FILE FOLDER

CONTAINS

MORE

INFORMATION