

3/46

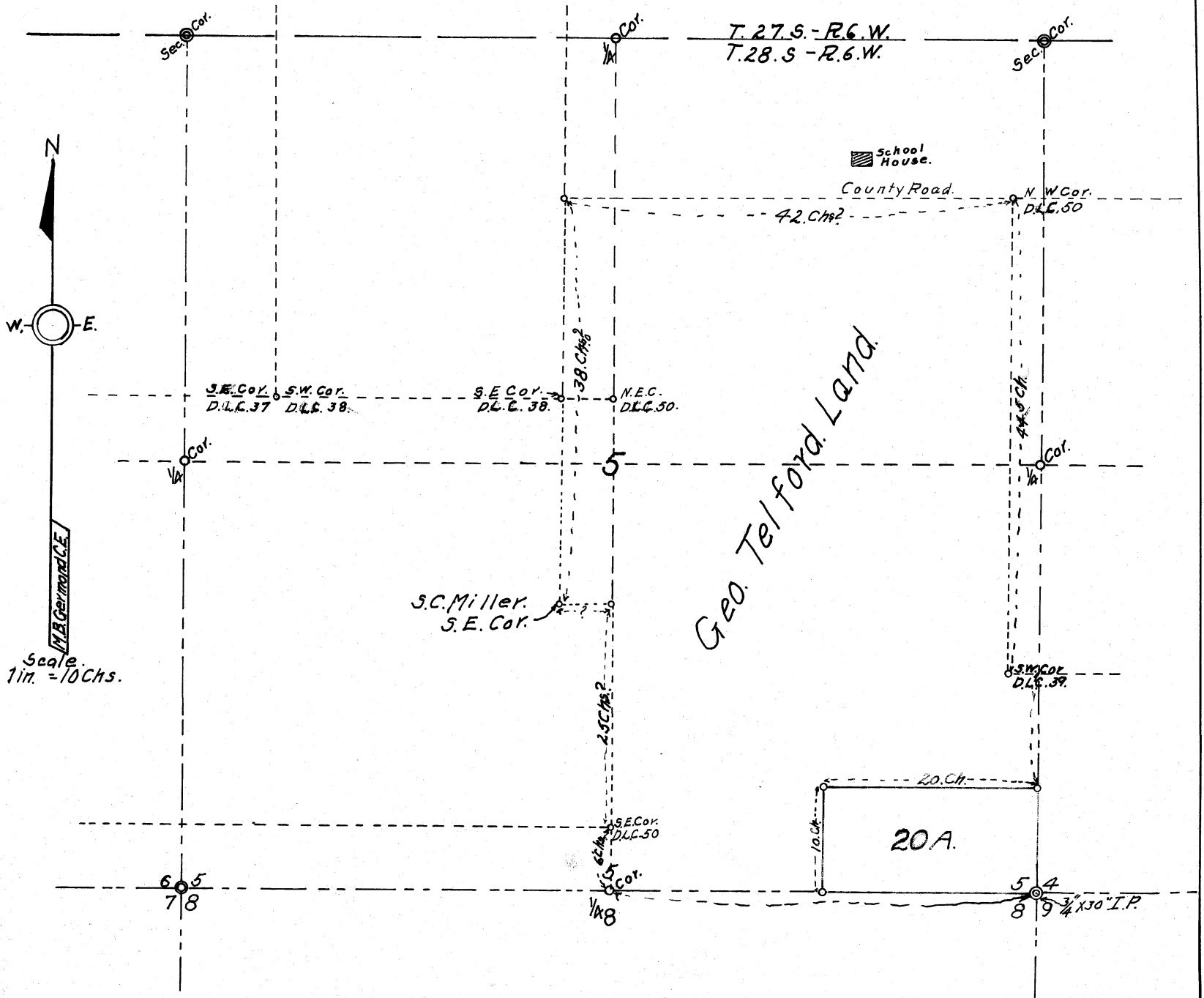
PLAT

SHOWING 20 ACRES TRACT OF LAND

Surveyed in S.E. Corner of Geo. Telford Land

IN
S.E. 1/4 of Sec. 5 - T.28.S. - R.6.W.W.M.

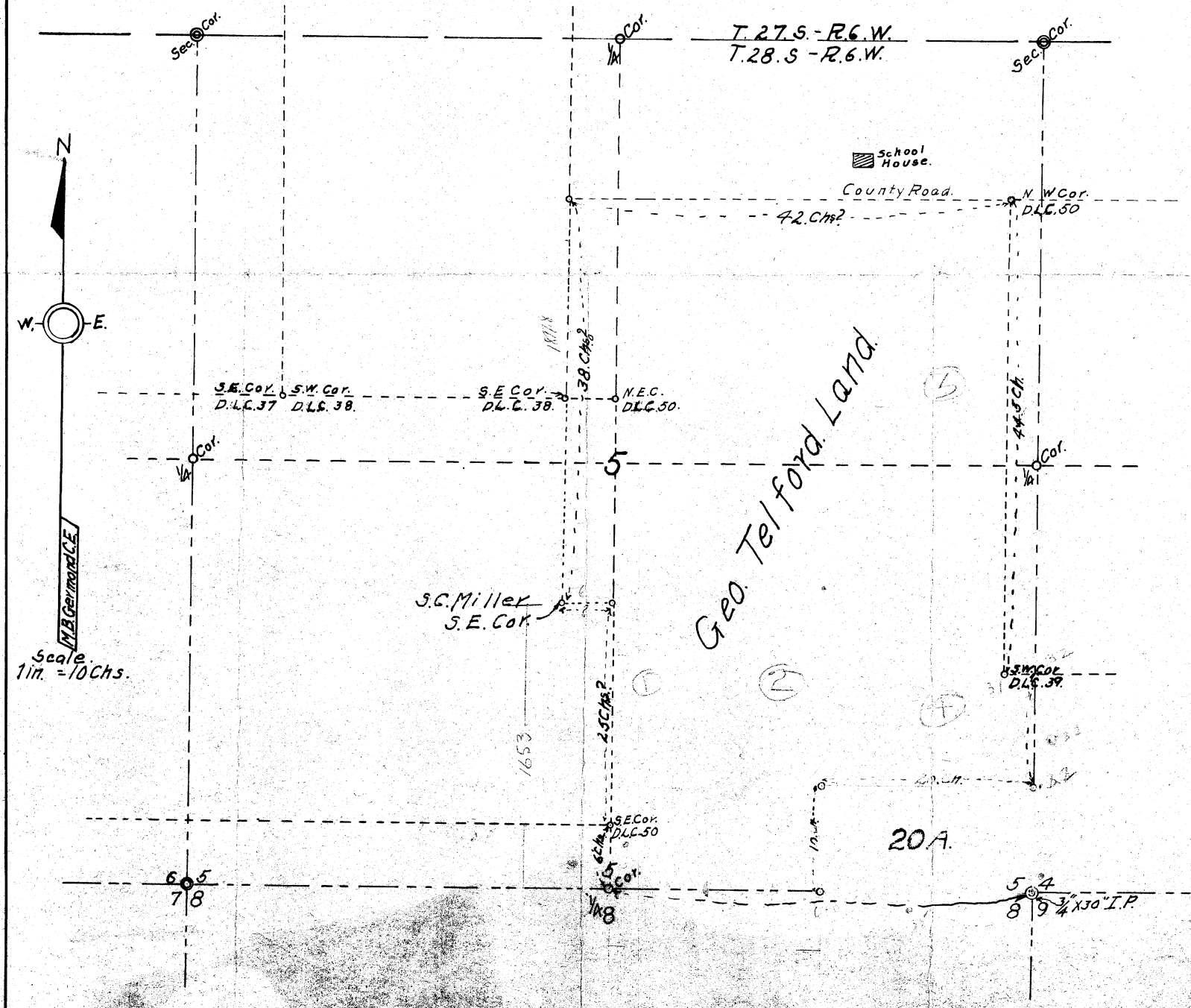
M.B. Germond County Surveyor.
Surveyed & Platted by H.L. Eppstein.
Jan. 1920.



SEC 5 T28 R6W

PLAT
SHOWING 20 ACRES TRACT OF LAND
Surveyed in S.E. Corner of Geo. Telford Land
IN
S.E. 1/4 of Sec. 5 - T.28.S. - R.6.W.W.M.

M.B. Germond County Surveyor.
Surveyed & Platted by H.L. Eppstein.
Jan. 1920.



CS FILE FOLDER

CONTAINS

MORE

INFORMATION