

C. S. 4-71

Coen
Edenbower

C. S. File No.

4/71

STA Dist. R L M.C.

Hub #6

468³ P.O.T.

EAST Edge
OF PAVEMENT

(221)

Edge of
PAVEMENT

(266)

R.W.
Hub #5

727 P.O.T.

Hub #4

3354

N&S Fence

3 + 920

(3203)

3

227 P.O.T.

2

66² 84°40'

HUB #1
CENTER
R.R.T

N89°30'E N89-41E

320? legal to to.

C. S. File No.

4/71

STA

DIST

R

L

M.C.

Hub #9

8°15'
2034
1025
3002

< 5014

N 89° 03' W

Hub #8

2916

1°17'

S 40° E

S 3-59 E

Hub #7

4409

88°27'

S 30° E

S 1-52 E

TO E6 W
FENCE

3269

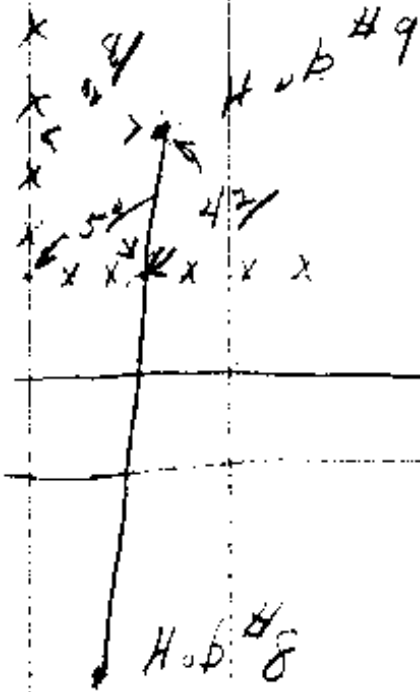
TO FENCE
POST

59

45°

N 89° 11' E

Hub #6



C. S. File No. 4/76

Job

Dist

R

L

H.C.

Hub #5
on E & W line
on North side

84°50'

N89°30'E N89°45'E

#3
NW Cor.

242' 1' 15" 300'

54°21'
50°21'

N3°45'E N4-51E

#13
Hub West
Side

189'

89°32'

N1°W N0-30W

SW cor.
Post

4'

33'

#12
SW cor.

8' 8' 20' 300'

304'

0' 29' S87°30'W

Fence
cor

4'

Fence BS.
45'

S47E

NS. line.
#11

95'

92°36'

N.

#10
Hub in
Fence cor.

7' 45'

120' 5'

1°06'

N86W

on top of hill
south side

#9

N89-03W

HOB ON H NI

45°

fence Cor.

44

92°36'

324

0°29' Left

E 4°

C. S. File No.

4/71

COUNTY ROAD

Hub DIST R L M.C.

Hub #4 423 L
1235 300
1°46'

N 8°15' E

Hub #17 216⁶
3°45' 217
2°17'

N 7° E

Hub #11

17 153⁹
4°30' 1544

0°24' S 64° W

Hub #16 300⁶
12/ 3°45' 300
121°05'

S 64° 30' W

TO IRON PIPE 36/ 80°

S 23° 30' W

Hub #15

2284/ 14°21' S 55° E

Hub #14

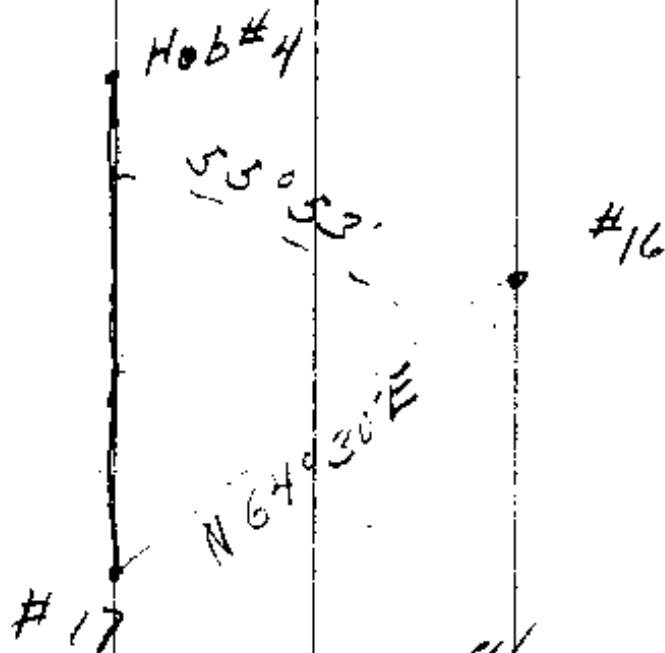
1285/ 47°04' S 42° E

Hub #5 727
ON ROAD
R.W.

C. S. File No. 4/71

N.E. COR. P.L.C # 37

WHITE OAK 12" DIA. S 34 30 W 337 FEET



C. S. File No.

4/171

STA DIST. R L M.C.

SECOR
DLC 49

$13^{\circ}30'$
 170° = $165^{\circ}3'$
 $4^{\circ}49'$

E

Hub #21

656 $2^{\circ}17'$

N83°30'E

Hub #20

$20^{\circ}00'$
 168° = 157°

$1^{\circ}02'$

N81°E

(7)

NECOR.
DLC #37
B.S. ON
Hub #19

N87-48N

S.E. COR. D.L.C. 47

WHITE OAK 14" DIA. STIPES

1098 FEET

C. S. File No.

4/71

Sta. Dist. R. L. M.C.

Hub

1897

2°39' N 1° W N 0-30 W

S.W. Cor
Lot 7

4315 4°22'

N 6° E. N 2-07 E

△

1704 Z 3° 2'

N 0°45' E N 2-13 W

△

743 L 85°21'

N 4°30' W N 5-15 W

65
of
63

S 87.24 W

N W Cor

27772

N E Cor

00

S 85° 24' W

W 27° 17' 3"

Time

Time 3:49

100 yds

120-54

H

36° 45'

V

40° 55'

H

35° 49'

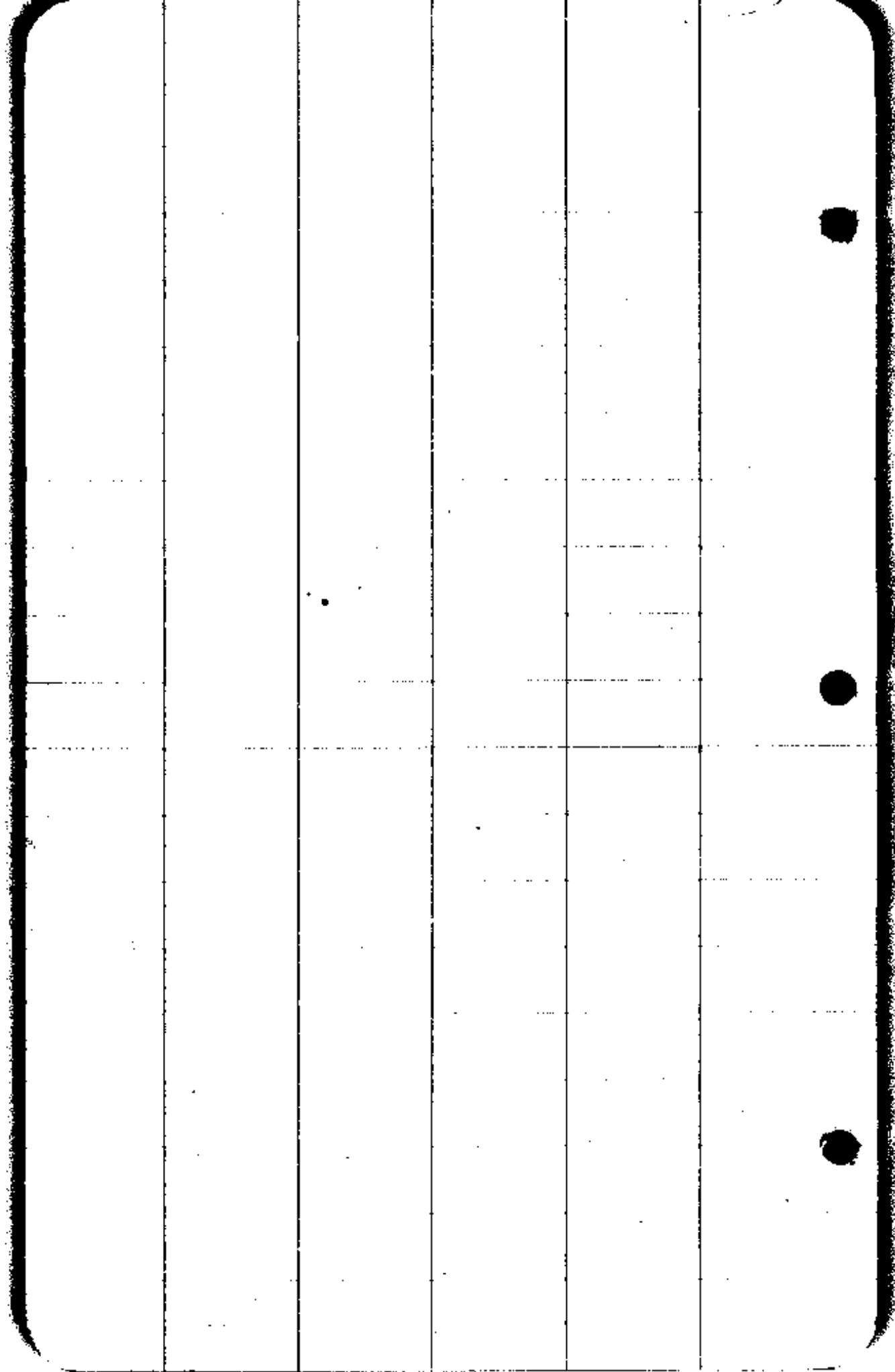
V

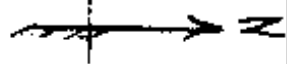
41° 35'

N 572 E

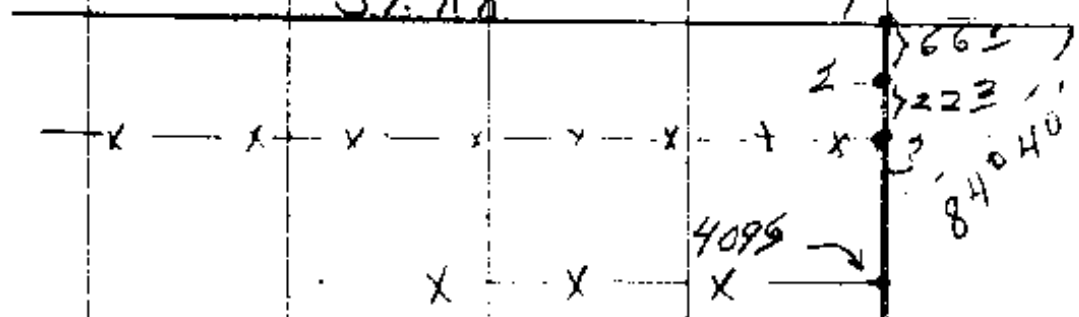
C. S. File No.

4/71





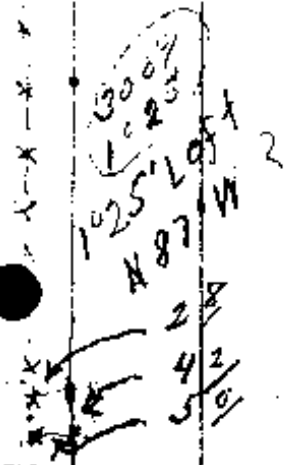
S.P.R.R



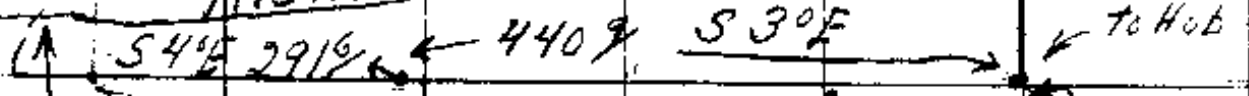
4244' → H

5334' →
EDGE OF PAYMENT

5455'
EDGE OF PAYMENT



PACIFIC HIGHWAY



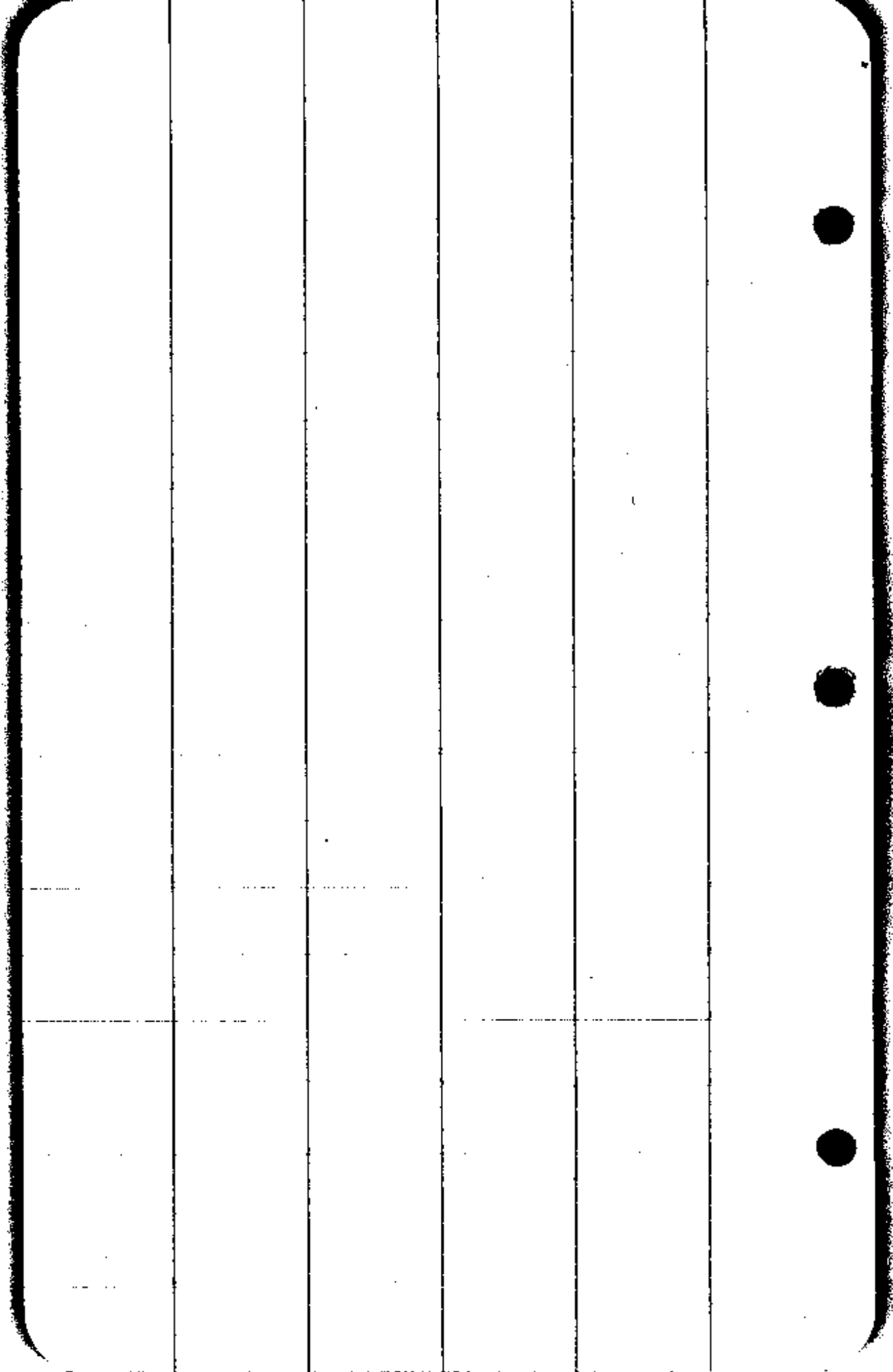
9406' R
47° FEET LEFT
N 88° 30' W

8802' →
5 FEET TO FENCE POST

3264' →

13
-3372
724
45487
876.8'

C. S. File No. 4/71



CS FILE FOLDER

CONTAINS

MORE

INFORMATION