

Scale 2 in. = 1 mi.

MAP OF
LEXINGTON INVESTMENT CO

WATER SYSTEM

IN

SECS. 16 & 17 - T. 27 S. - R. 7 W. - W. M.

DOUGLAS CO ORE.

Office of W. B. Germond Co Surv

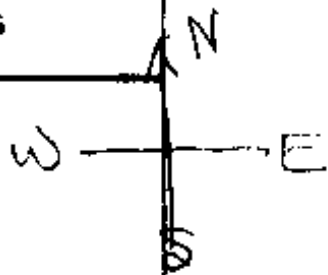
Oct. 1919

CERTIFICATE OF SURVEYOR.

I, F. C. Frear, of Roseburg Oregon, do hereby certify that this map was made from notes taken during an actual survey made by me on Oct. 11, 1919, and that it correctly represents the works described in the accompanying application, together with the location of streams in the immediate vicinity.

F. C. Frear
Deputy County Surveyor

4/33-7



J.M. Wright CL. 49
N.W. Cor

531 1/2

17 1/2 Cor. en.
12.50
16 625.0

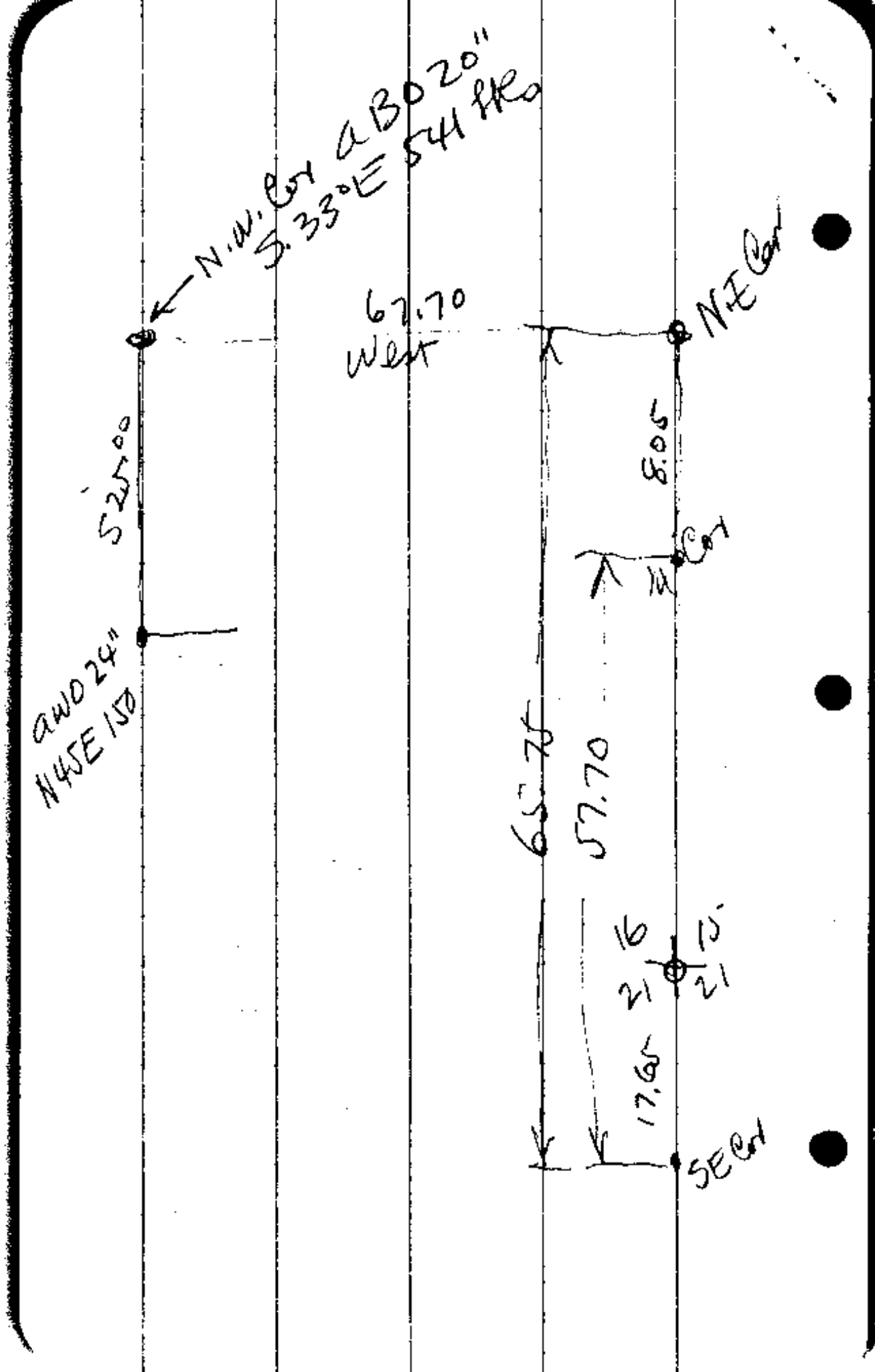
8.05
66
4830
482
531.3

1250
66
750
750
825.0

536

1219
536
7314
3657
6095
65338 4

43560
15
217800
435600 (1229
153400
536
1174
1072
10260
152604
44824



N.W. Cor A B 20"
 S. 33° E 54 ft

67.70
 West

525.00
 NW 24"
 N 45° E 150

NE Cor

8.05

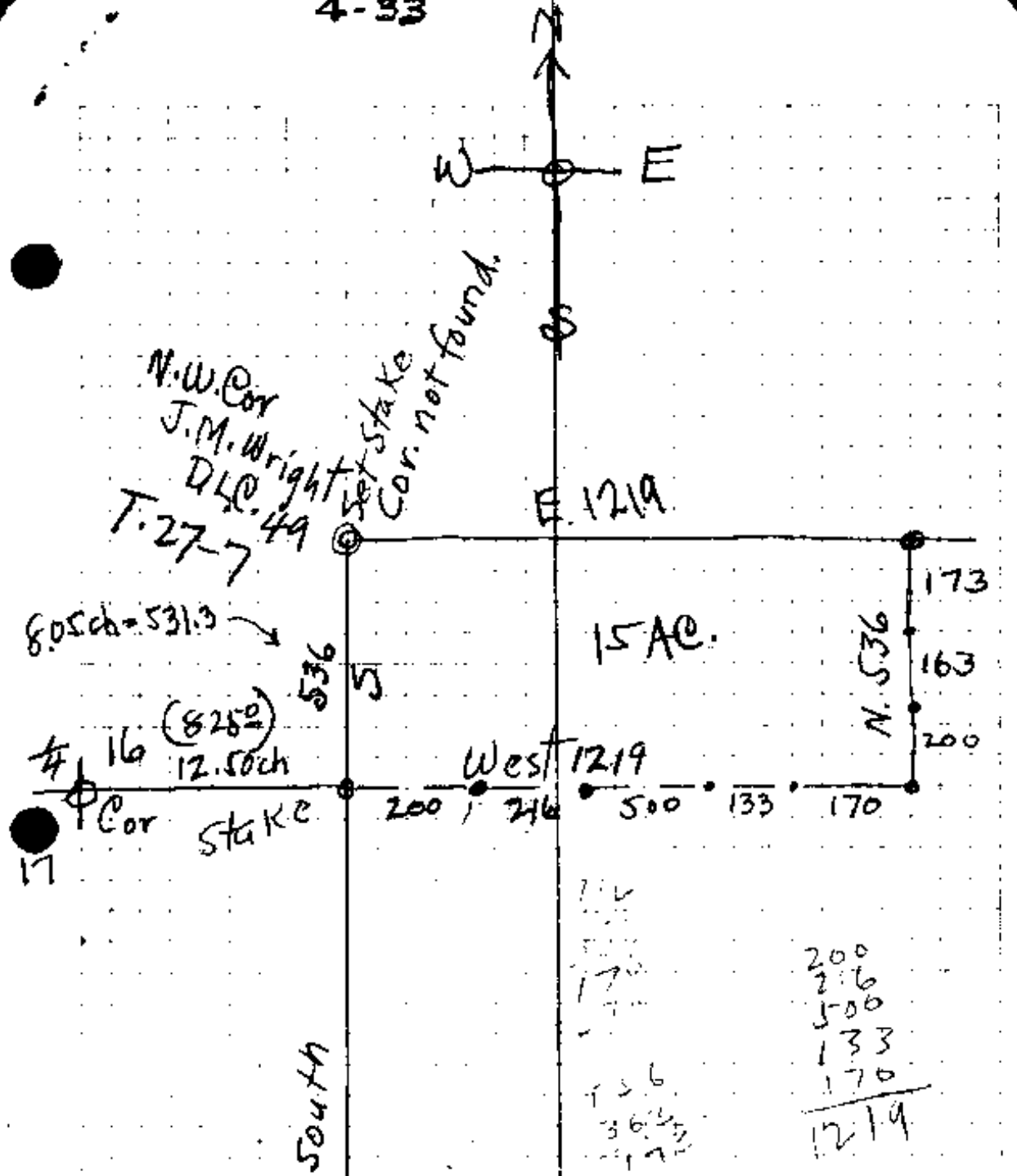
65.75

57.70

16
 21

17.65

SE Cor



Lexington Inv. Co. to Paul Henry
 Demmer. - Beg at N.W. Cor. J.M. Wright
 DLC #49 in T. 27 S - R. 7 W. W.M.
 Daeg Co. Ore Th. S. 536 ft
 " " W 1219 ft.
 " " N 536 ft.
 " " E 1219 ft to place of
 beginning & Cont 15 Ac. of
 land more or less

Paul Henry Demmer
to W. S. Hamilton or Lexington Inv.
All of Lots 5 & 6 in
Sec. 16 - T. 27 - 7 - Cont. 41.12 Ac.,
to Lexington Inv. Co

L5 -	24.95
L6 -	14.17
	<hr/>
	41.12

CS FILE FOLDER

CONTAINS

MORE

INFORMATION