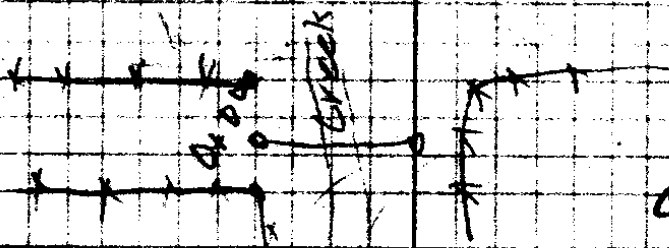


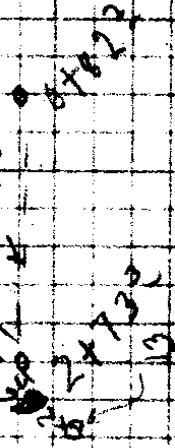
4-23

# Brown Road

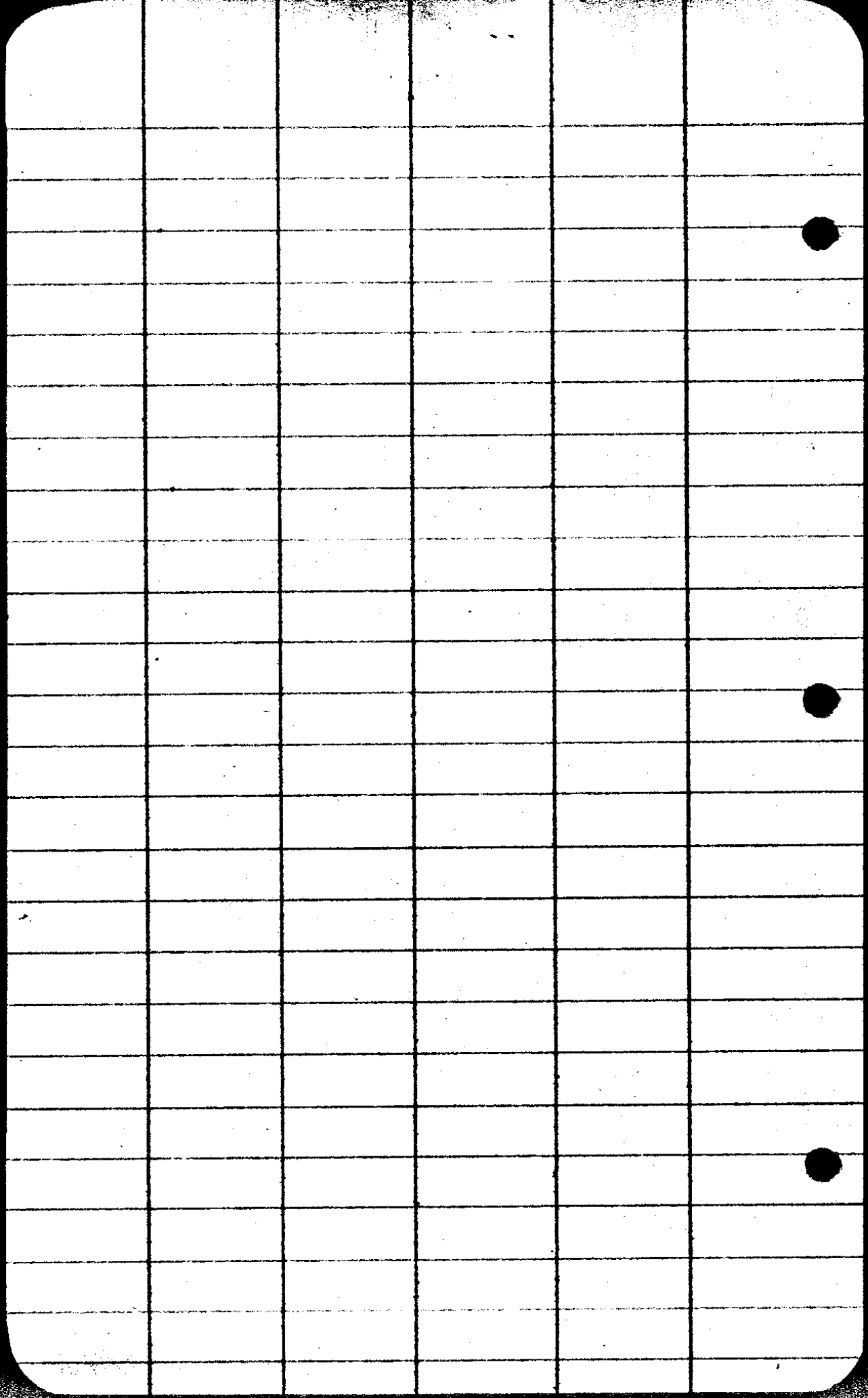


Colony on Y side  
 DEER CREEK Orchard Tract.

4/10  
 4/11  
 4/12  
 4/13  
 4/14  
 4/15  
 4/16  
 4/17  
 4/18  
 4/19  
 4/20  
 4/21  
 4/22  
 4/23



CS 4 4/23

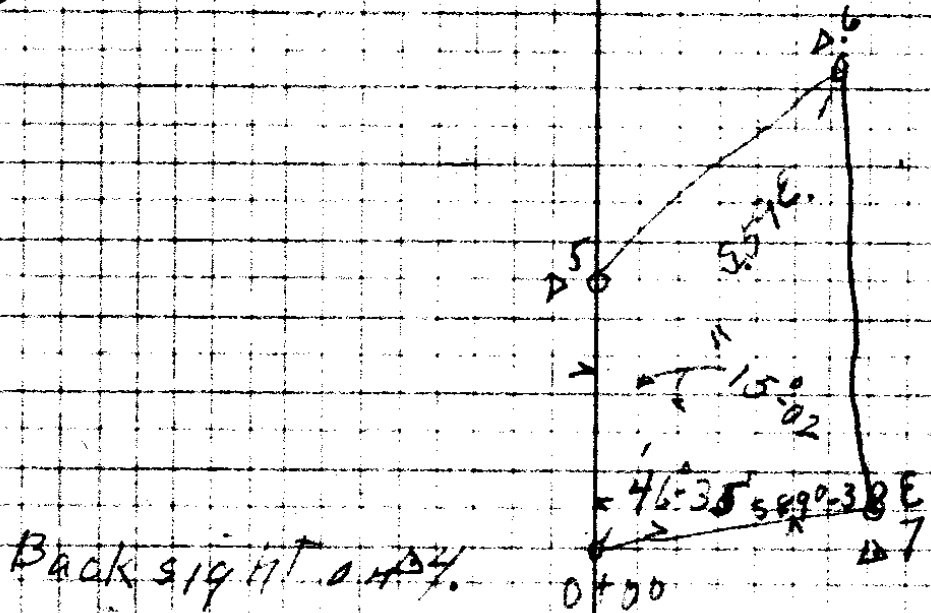


4-23

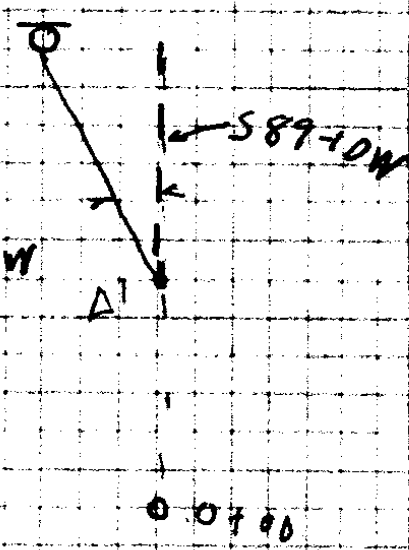
AS 4/23

SURVEY FOR  
 Dredge Collection Angles  
 Dist AL H. R. M. C.

0+00	334°			589-32 W
Δ 7	205°			
Δ 6	212°		28-34'	N72-E N71-31E
Δ 5	192°		2°-04'	N44E N42-57E
0+00	X			
1 Δ	244°	131°-43'		589-30W 589-10W
0+00	75°	13°-49'		N42E N40-52E
Δ+60	215°	15-52'		N56-15E N54-42E
3 Δ	145°	109-04'		N71-15E N70-31E
2 Δ	183°	89°-32'		50-30E 50-22E
1 Δ				5-89° W 589-10W
0+00				



4 P.M. Aug 26-22  
 Ver. 31°-28'  
 Hor. 15°-20'  
 Needle 573-30'W



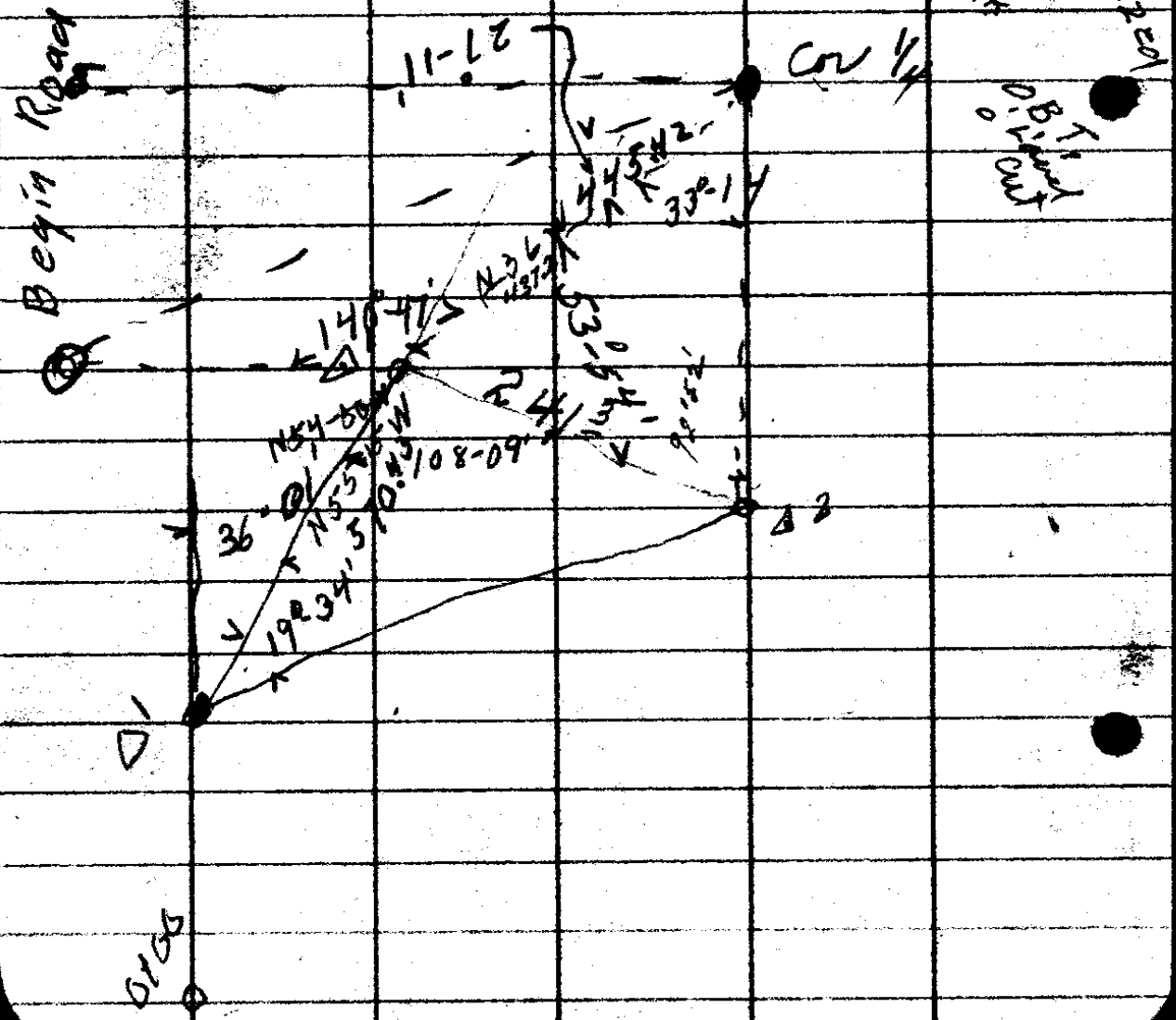
05423

Sighted on 0+00  
 N.W. Coy. of Weaver  
 05423 West  
 05423 North

# Need for Brown & Wren

1/4 Be <sup>between</sup> 14 1/2' set 1/2 steel Bar  
 sec 3 with Hook on upper end.  
 17' Marked 30 B.O. N 94 3/4 E 31 1/2  
 " 19' W O S 66 W 75 1/2

Begin Road



139.57  
91.26  
-----  
88.31

CS 4/23

Temple via Brown Road

Sta	Dist	L.A.	R.A.	MC	CC
19+48 <sup>2</sup>	502 <sup>±</sup>		13-25	582-30W	S81°29'W
14+46 <sup>2</sup>	349 <sup>±</sup>	15-11		568 W	S68°04'W
10+96 <sup>2</sup>	259 <sup>±</sup>		9-19	588-15W	S83°15'W
8+37 <sup>2</sup>	154 <sup>±</sup>		31-41	575-30W	S78°56'W
6+81 <sup>1</sup>	153 <sup>±</sup>	12-09		543-W	S42°15'W
5+28 <sup>5</sup>	255 <sup>±</sup>	11-58		558-30W	S54°-24'W
2+73 <sup>3</sup>	191 <sup>±</sup>	28°-08		567°W	S66°22'W
0+82 <sup>2</sup>	82 <sup>±</sup>			584-30W	S84°30'W
0+00					

Beginning at S.E. corner of the N.W. Quar. of the S.W. 1/4  
of Sec. 141 - Tp. 27. S. R. 5. W. of W.M. - 35<sup>th</sup> rd. W.  
42. rds N. 36 rds E. - ~~36~~ rds. S. to place beginning.

Containing  $9 \frac{3}{16}$  A.

Undivided  $\frac{1}{3}$  Int. in spring near West  
line of N.W. Quar. of the S.E. 1/4. Right to  
install and maintain pipe line  
of E. & Lillian Platted to T. L. Warner & Wk.  
S.K. ← wife.

Dec. 5 - 1921, GEN. NO. 423

IRA B. RIDDLE, COUNTY CLERK  
S. W. STARMER, SHERIFF  
J. E. SAWYERS, TREASURER  
FRANK L. CALKINS, ASSESSOR  
O. C. BROWN, SCHOOL SUPT.  
M. E. RITTER, CORONER  
F. C. FREAR, SURVEYOR

# DOUGLAS COUNTY

ROSEBURG, OREGON

COUNTY JUDGE, GEORGE K. QUINE  
COMMISSIONERS: EDWIN WEAVER  
R. W. LONG  
DIST. ATTORNEY, GEORGE NEUNER JR

COUNTY COURT  
FIRST WEDNESDAY IN EACH MONTH

## DESCRIPTION OF DEED FROM T. L. WEAVER TO TEMPLIN BROWN.

Beginning at a point, which bears S. 51° 30' E. 1173.0 feet from the  $\frac{1}{4}$  section corner common to sections 14 & 15, Township 27 South, Range 5 West, W. M. Douglas County, Oregon;

Thence N. 89° 09' E. 233.3 feet,

Thence S. 40° 47' W. 71.0 feet,

Thence S. 55° 23' W. 224.3 feet to Brown East line

Thence N. 00° 24' W. 177.7 feet, along Brown's East line to the place of beginning. Containing 0.524 acres more or less.

---

## DESCRIPTION OF

## DEED FROM TEMPLIN BROWN TO T. L. WEAVER.

Beginning at a point, which bears S. 51° 30' E. 1173.0 feet from the  $\frac{1}{4}$  section corner common to sections 14 & 15, Township 27 South, Range 5 West, W. M. Douglas County, Oregon;

Thence N. 42° 56' E. 196.3 feet,

Thence N. 71° 38' E. 215.3 feet to Hedgpath's West line,

Thence S. 00° 24' E. 206.2 feet along Hedgpath's West line.

Thence S. 89° 09' W. 335.2 feet along T. L. Weaver North line to the place of beginning. Containing 1.02 acres more or less.