

**MAP OF  
CHAS. H. KAISER IRRIGATION  
SYSTEM**

IN  
SECTION 12, TWP. 27S., RANGE 7 W.W.M.  
DOUGLAS COUNTY OREGON  
OFFICE OF  
H. L. EPPSTEIN  
COUNTY SURVEYOR

**CERTIFICATE OF SURVEYOR**

I, H. L. Eppstein, of Roseburg, Oregon, do hereby certify that this map was made from notes taken during an actual survey made by me on the fourth day of October 1922, and that it correctly represents the works described in the accompanying application, together with the location of streams and other ditches in the immediate vicinity.

Oregon No. \_\_\_\_\_

Date of Registration \_\_\_\_\_

Registered Professional Engineer \_\_\_\_\_

U-4/2

Chas H. Kaiser  
Water Filing

C.S. 4-22

NE<sup>1</sup>/<sub>4</sub> NE<sup>1</sup>/<sub>4</sub> Sec 12  
T27-7

Cross Creek

Champion Creek

○ Δ<sup>3</sup>

□ Barn.

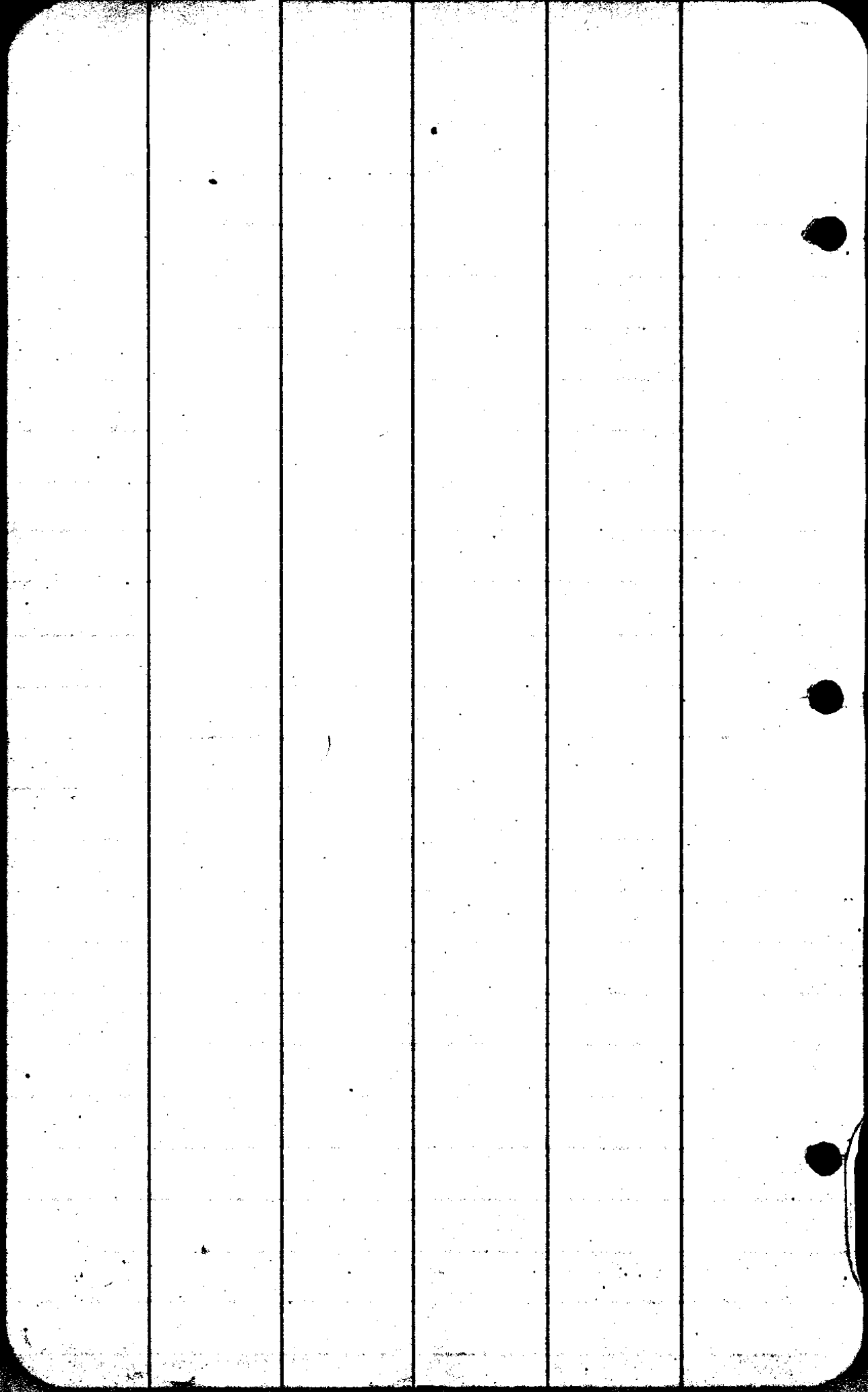
10 Acres to  
Irrigate

○ Δ<sup>2</sup>

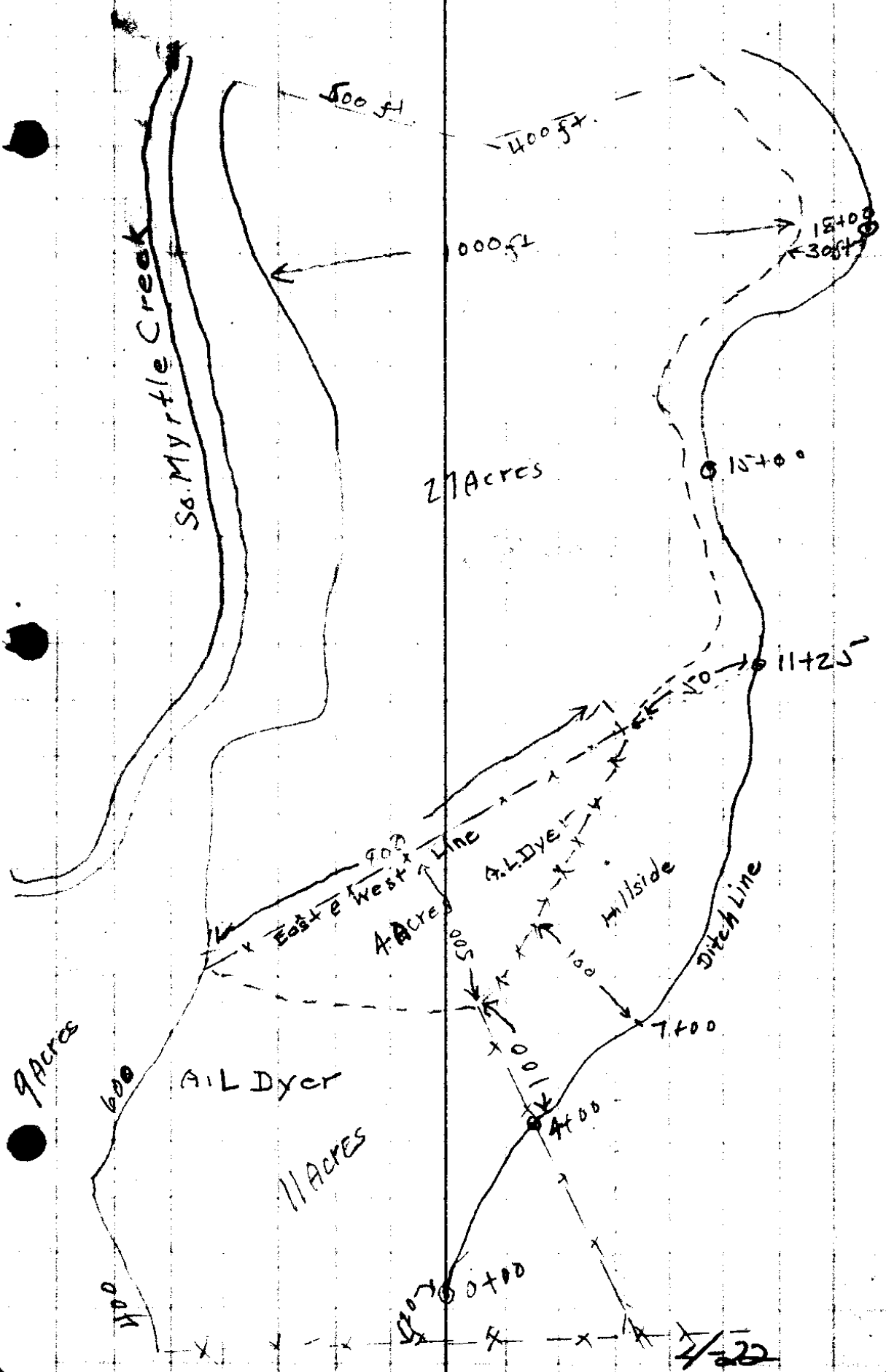
□ saw mill

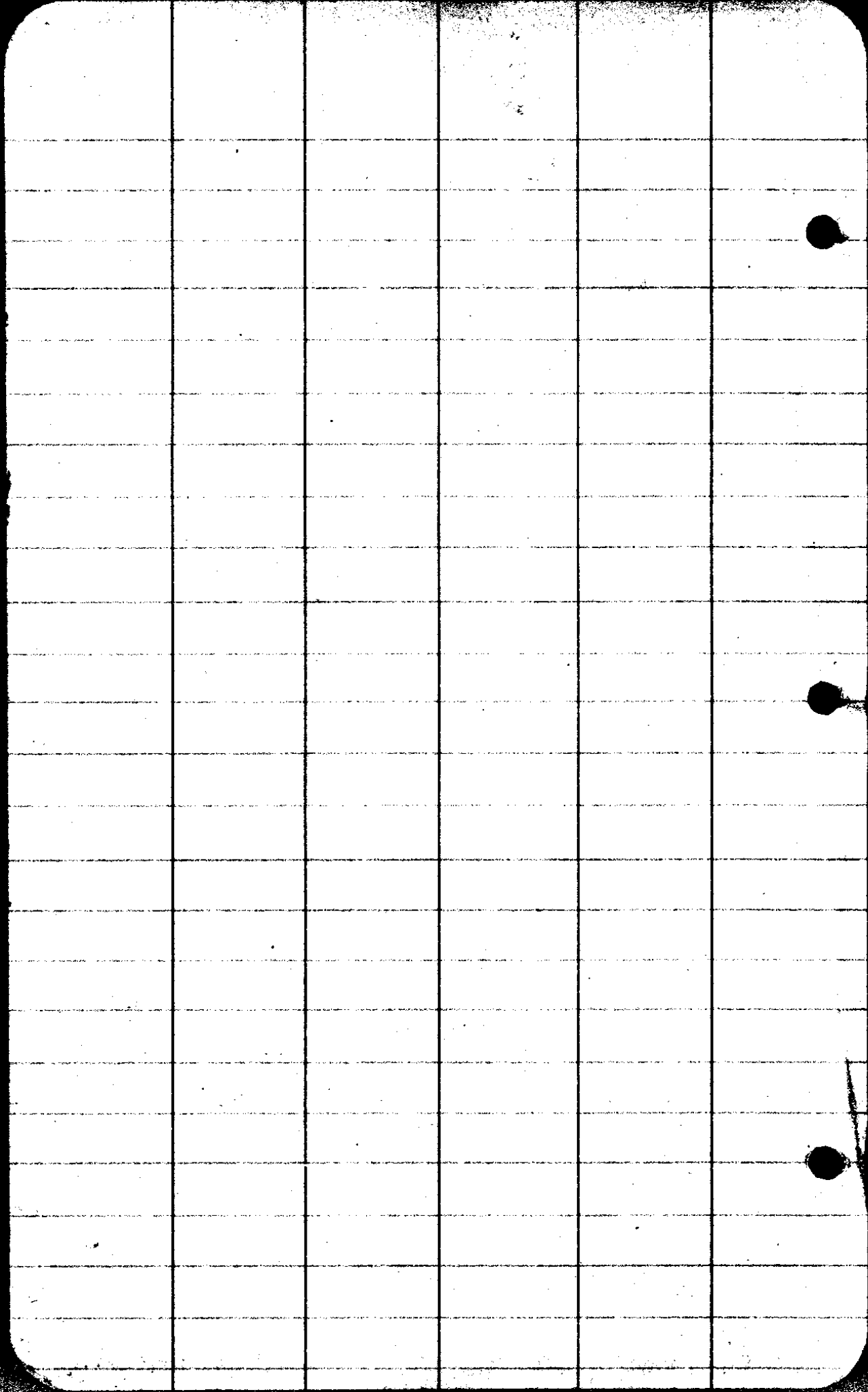
○ ○<sup>1</sup>

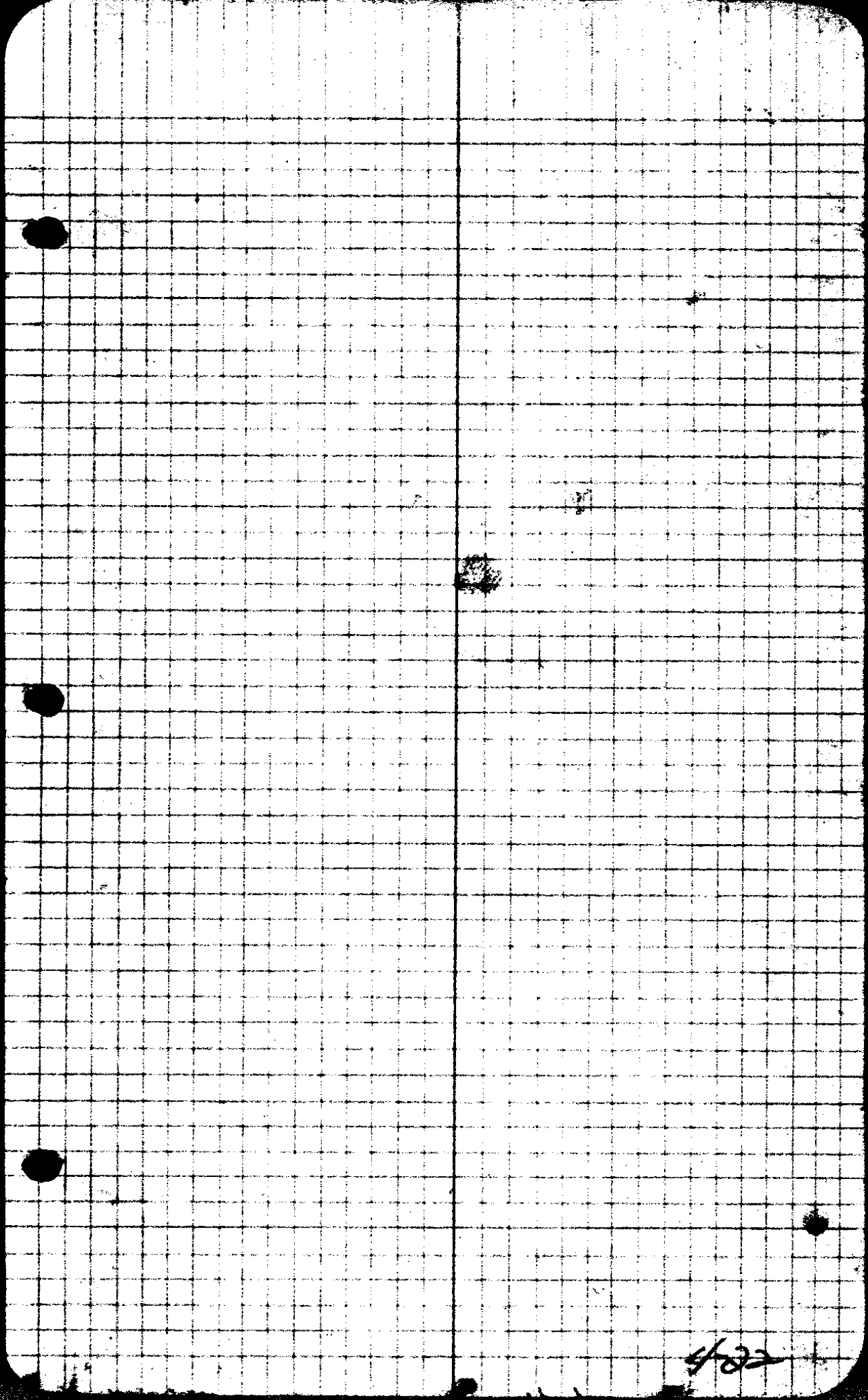
○ Cor



Dyer Bros. Irrigation System.  
A.L. & V.R. Dyer.







4/22

# Ditch

Sta	+	∇	-	R.	Elev
4+00	4.30	104.30			100.00
3+00				4.20	
2+00				4.50	
1+00				4.50	
0+00				4.70	
start	<u>8.00</u>	<u>108.00</u>			<u>100.00</u>
5+00				7.90	100.1
6+00				7.80	2
6+50				7.75	.35
7+00				7.70	30
T.P.	9.50	109.80	7.70		100.30
8+00				9.40	.4
9+00				9.30	.5
10+00				9.20	6
T.P.	10.04	111.21	9.20		100.60
11+00				10.51	100.70
12+00				10.41	100.80
13+00				10.31	100.90
T.P.	3.14	104.0	10.31		100.90
14+00				3.04	101.00
T.P.	7.58	108.58	3.04		101.00
15+00				7.48	
16+00				7.38	
T.P.	9.96	111.16	7.38		101.20

H106

08/22

Sta	+ f	A T	- -	R	Elev
	0.64	103.34			102.70
New # 31+00				5.64	97.90
# 32+00				5.34	97.80
# 32+00				5.44	97.90
T.P.	4.85	102.75	5.44		97.90
# 34+00				4.75	98.00
# 35+00				4.65	98.10
T.P.	6.89	104.99	4.65		98.10
# 36+00				6.79	98.20
# 37+00				6.69	30
T.P.	5.68	103.98	6.69		98.30
# 38+00				5.58	98.4
T.P.	4.37	102.77	5.58		98.50
# 39+00				4.27	.5
# 40+00				4.17	.6
T.P.	8.53	107.13	4.17		98.6
# 41+00				8.43	98.70
# 42+00				8.33	98.8
T.P.	8.38	107.18	8.33		98.80
# 43+00				8.28	.90
T.P.	5.40	104.30	8.28		98.90
# 44+00				5.30	99.00
T.P.	9.29	108.29	5.30		99.00
# 45+00				9.19	99.1

Hub B.M.

Hub B.M.

N+25 Section line.

① 4/22

Sta	+	T	-	R	Elev
		111.6			
17+00				9.86	101.30
18+00				9.76	4
19+00				9.66	50
T.P.	3.0	104.50	9.66		101.50
20+00				2.9	101.60
21+00				2.8	101.70
22+00				2.7	8
T.P.	5.08	106.88	2.70		101.80
23+00				4.98	101.90
24+00				4.88	102.00
25+00				4.78	1
T.P.	11.03	113.13	4.78		102.10
26+00				10.93	2
27+00				10.83	3
T.P.	5.96	108.26	10.83		102.30
28+00				5.86	40
29+00				5.76	5
30+00				5.66	6
31+00				5.56	7
T.P.	10.61	113.31	5.56		102.70
32+00				10.51	102.80
33+00				10.41	9

CS 1/22

Sta	+	A	-	R	Elev
		105.69			
79				3.19	102.50
80				3.09	102.60
T.P.	6.88	109.48	3.09		102.60
81				6.78	102.70
TP	0.15	102.85	6.78		102.70
82				0.05	102.80
TP	5.85	108.65	0.05		102.80
83				5.75	102.90
TP	7.91	110.81	5.75		102.90
84				7.81	103 <sup>00</sup>
85				7.71	103 <sup>1</sup>
86				7.61	103 <sup>2</sup>
87				7.51	103 <sup>3</sup>
88				7.41	103 <sup>4</sup>
TP	5.78	111.88	4.71		106.10
89				8.38	103.5
90				8.28	103.6
90+12				8.18	103 <sup>7</sup>
91+00				17.05	99.83
	6.82				
		1.36			
				6.82	105.06

Sta 31+00 lower 5' feet for New  
Grade Elev 97.7

CS 4/22

Sta	+	A	-	R	Elev
		10829			
T.P.	11.50	110.70	9.19		99.10
46+00				11.50	2
47+00				11.40	3
			11.40		99.30
T.P.	5.89	105.19			
48+00				5.79	99.40
49+00				5.69	99.50
50+00				5.59	99.60
51+00				5.49	99.70
T.P.	2.14	106.84	5.49		99.70
52+00				7.04	99.80
53+00				8.94	99.90
T.P.	9.73	109.63	6.94		99.90
54				9.63	100.0
55				9.53	100.1
56				9.43	100.2
57				9.33	100.3
58				9.23	100.40
T.P.	10.44	110.84	9.23		100.40
59				10.34	100.50
60				10.24	100.60
61				10.14	100.70
62				10.04	100.80

Cut 1<sup>o</sup>

Cut 2<sup>o</sup>

Cut 2.70

Cut 1.28

Reading

4.71

7.08

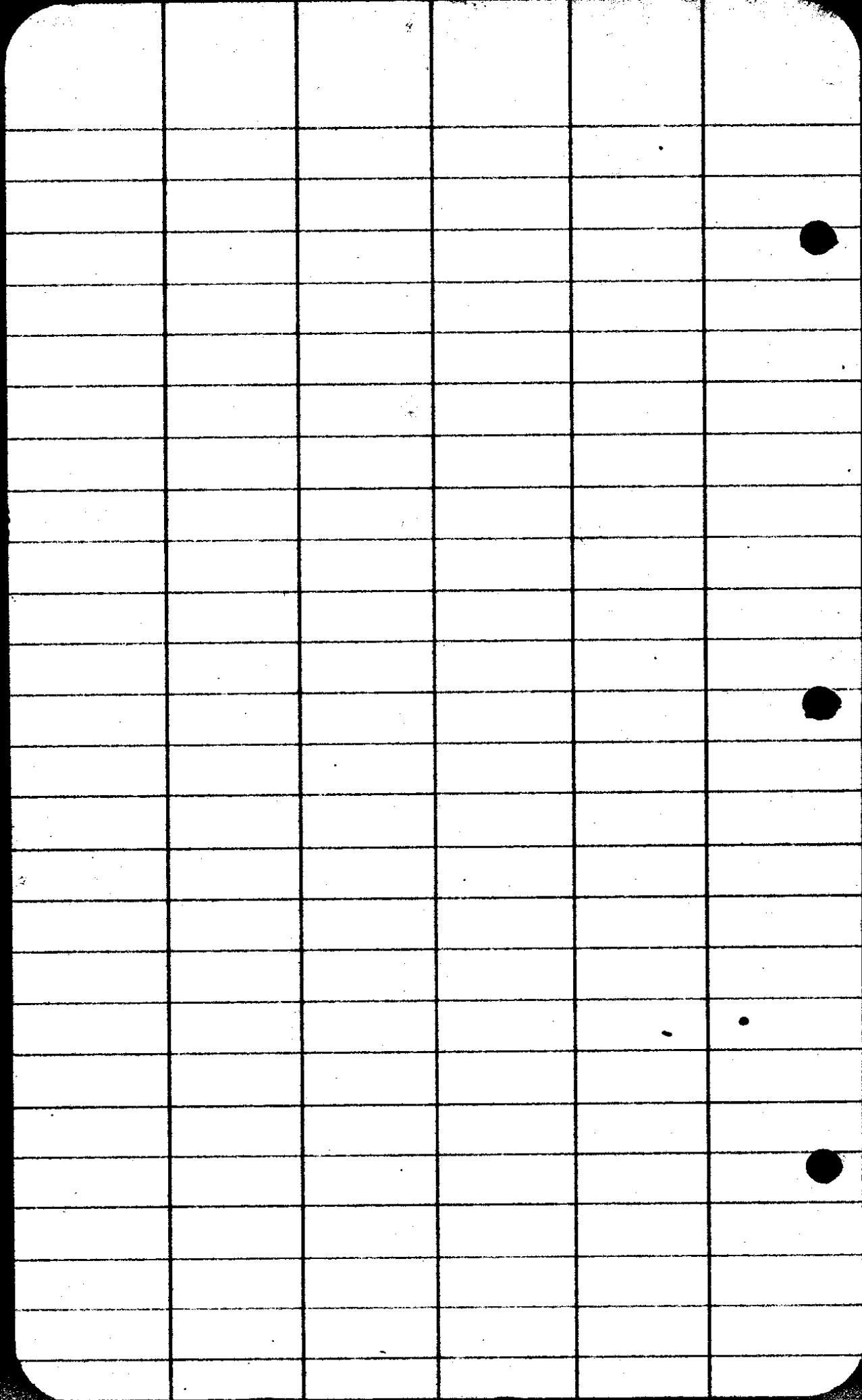
Cut 0.6

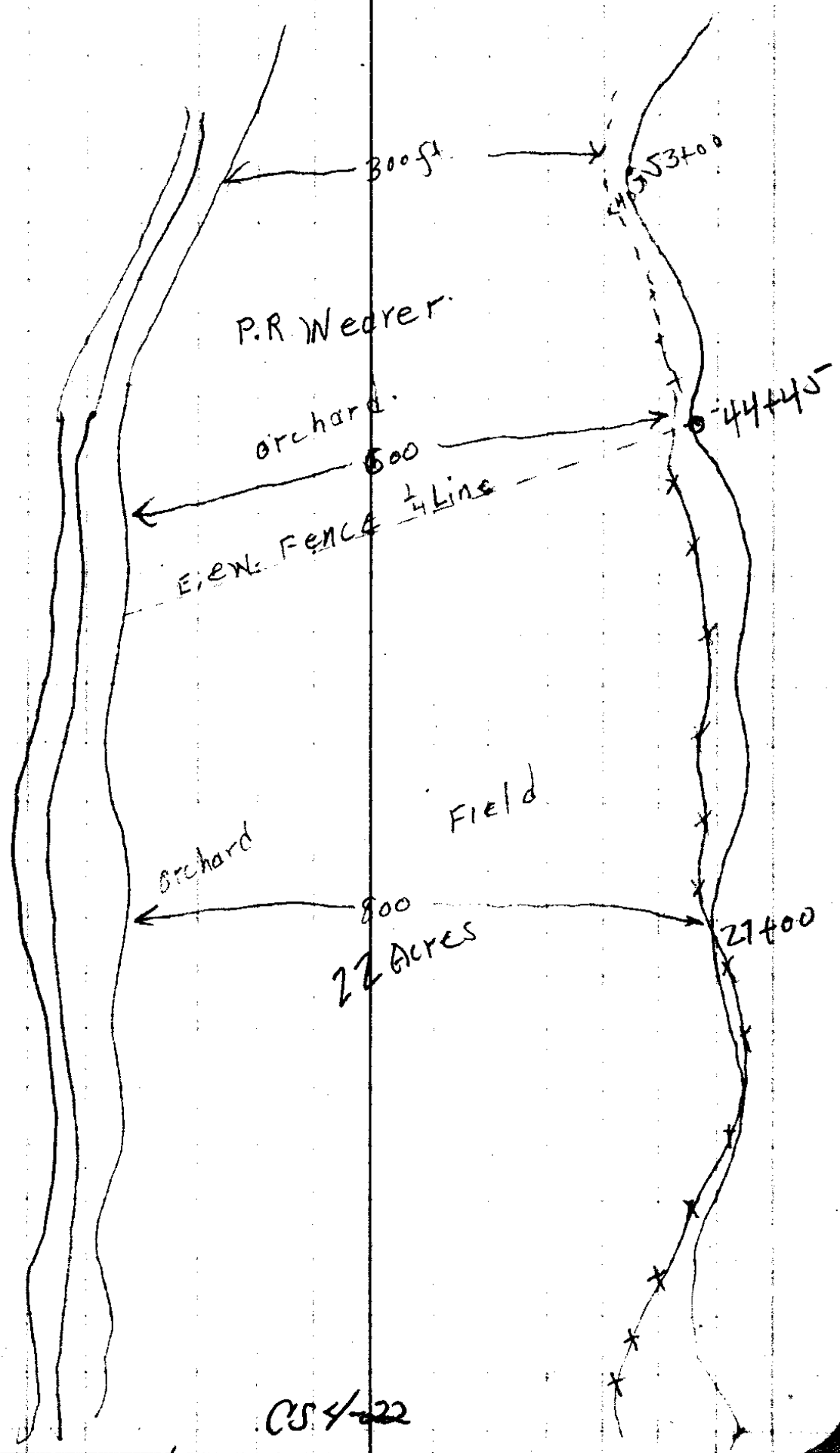
" 0.0

3.9

Hub BM

CU 4/22





P.R. Weader

orchard

EVEN FENCE 1/4 Line

orchard

Field

27 Acres

CS 4-22

300 ft

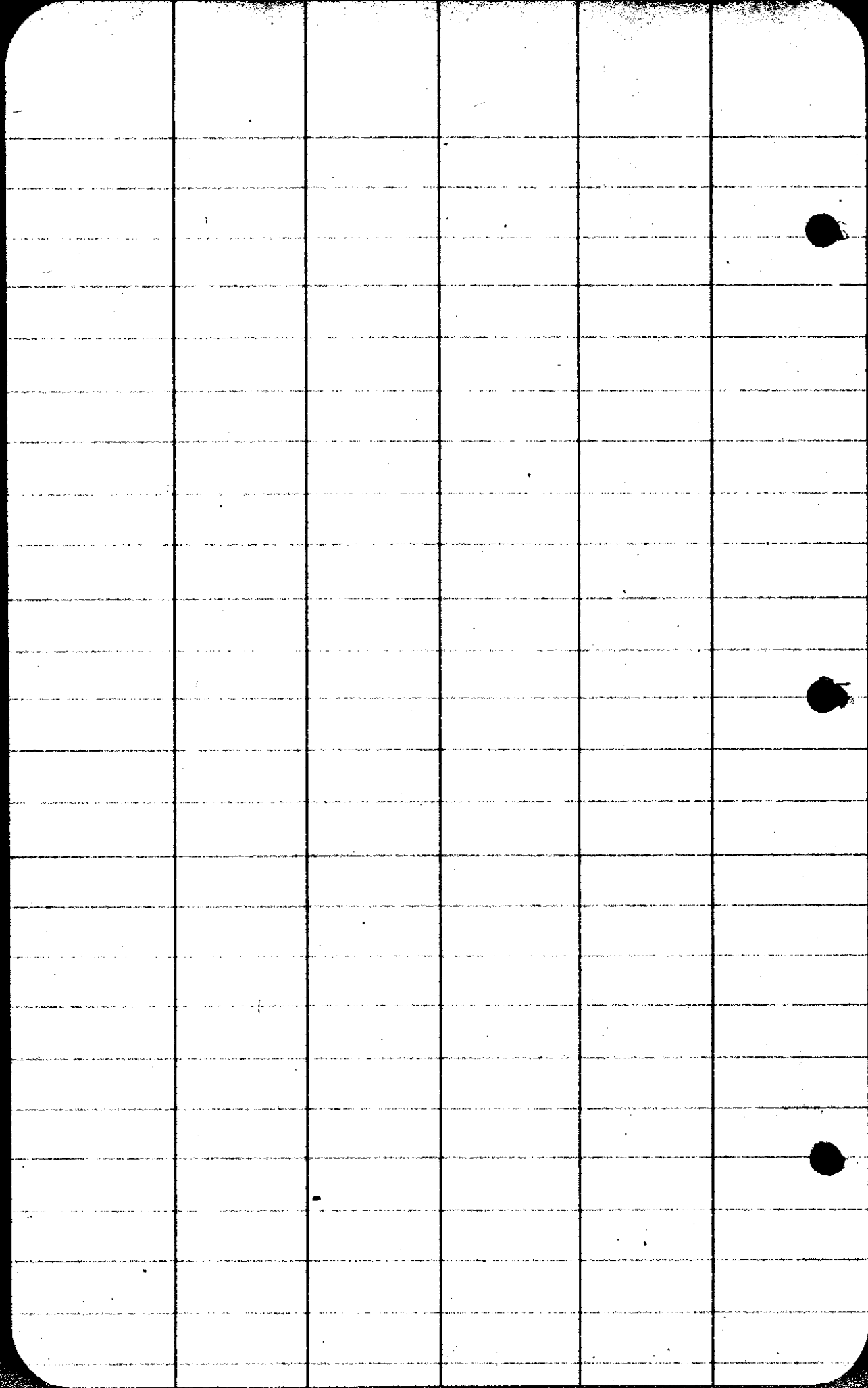
800

600

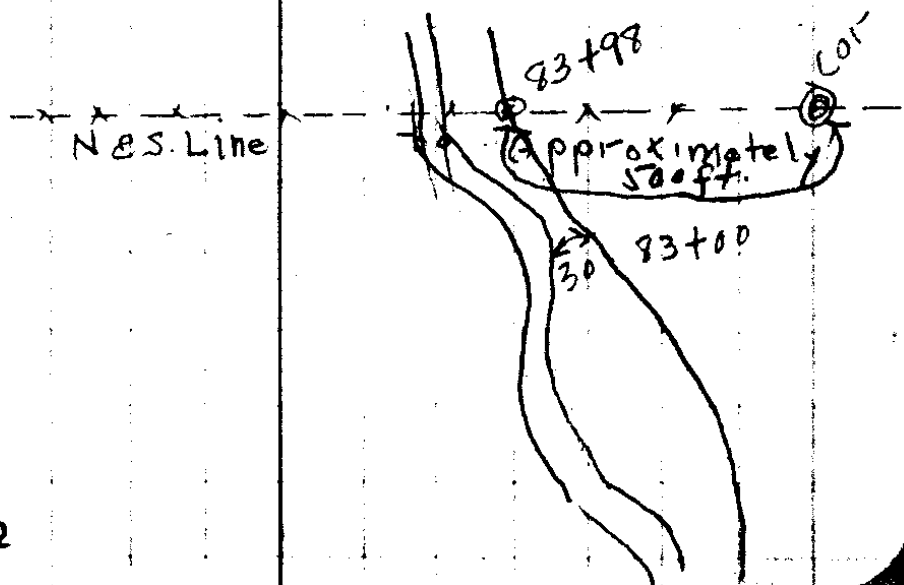
4553400

44445

27400

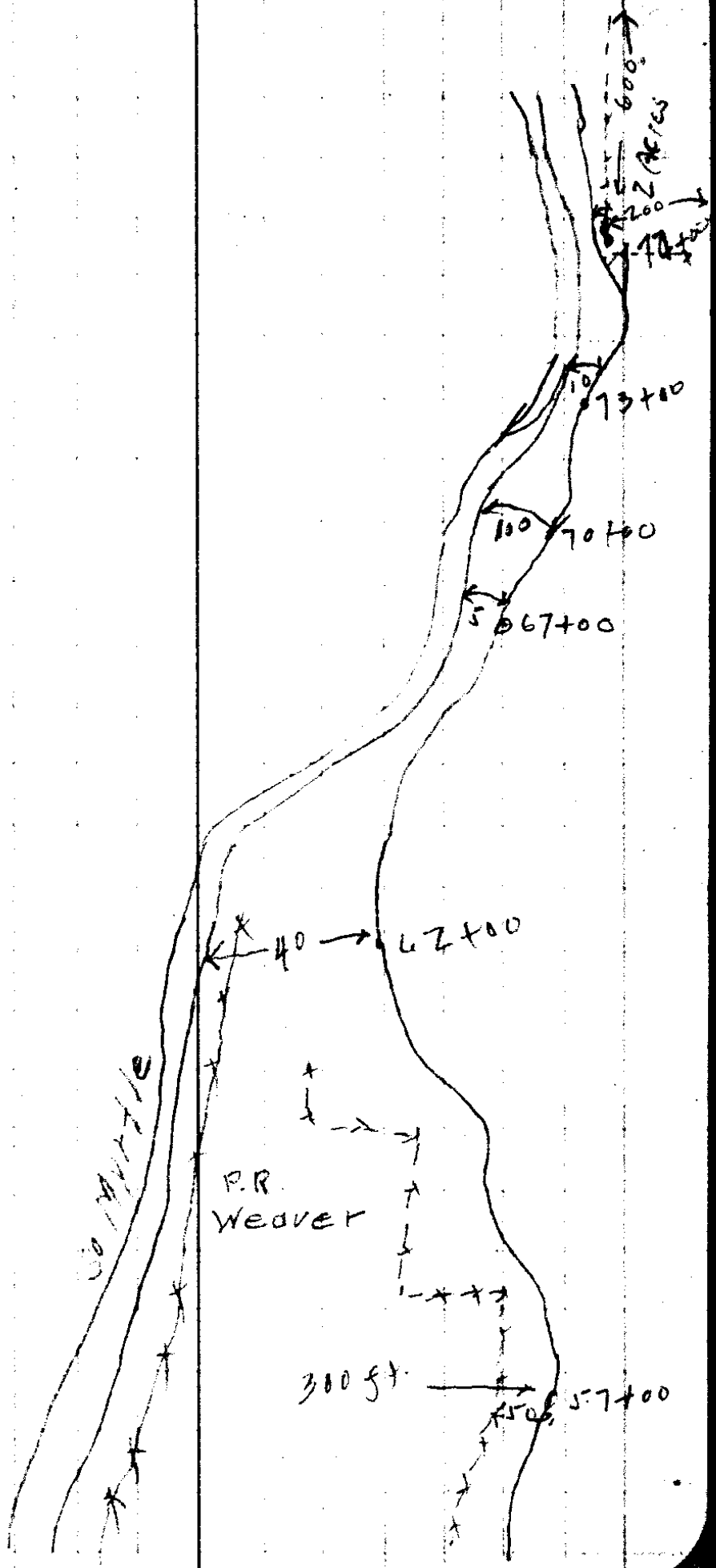


Rebecca Griggs

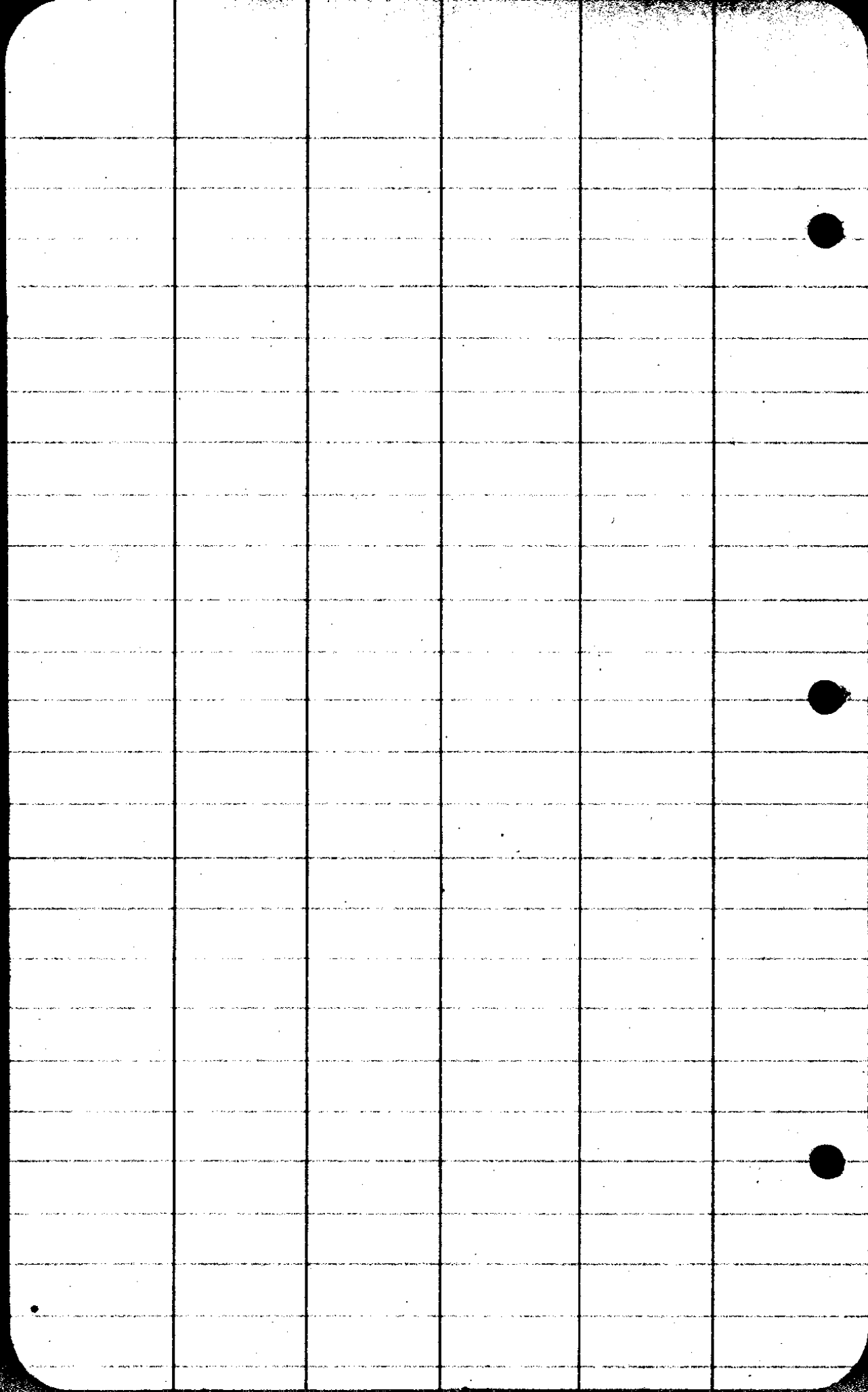


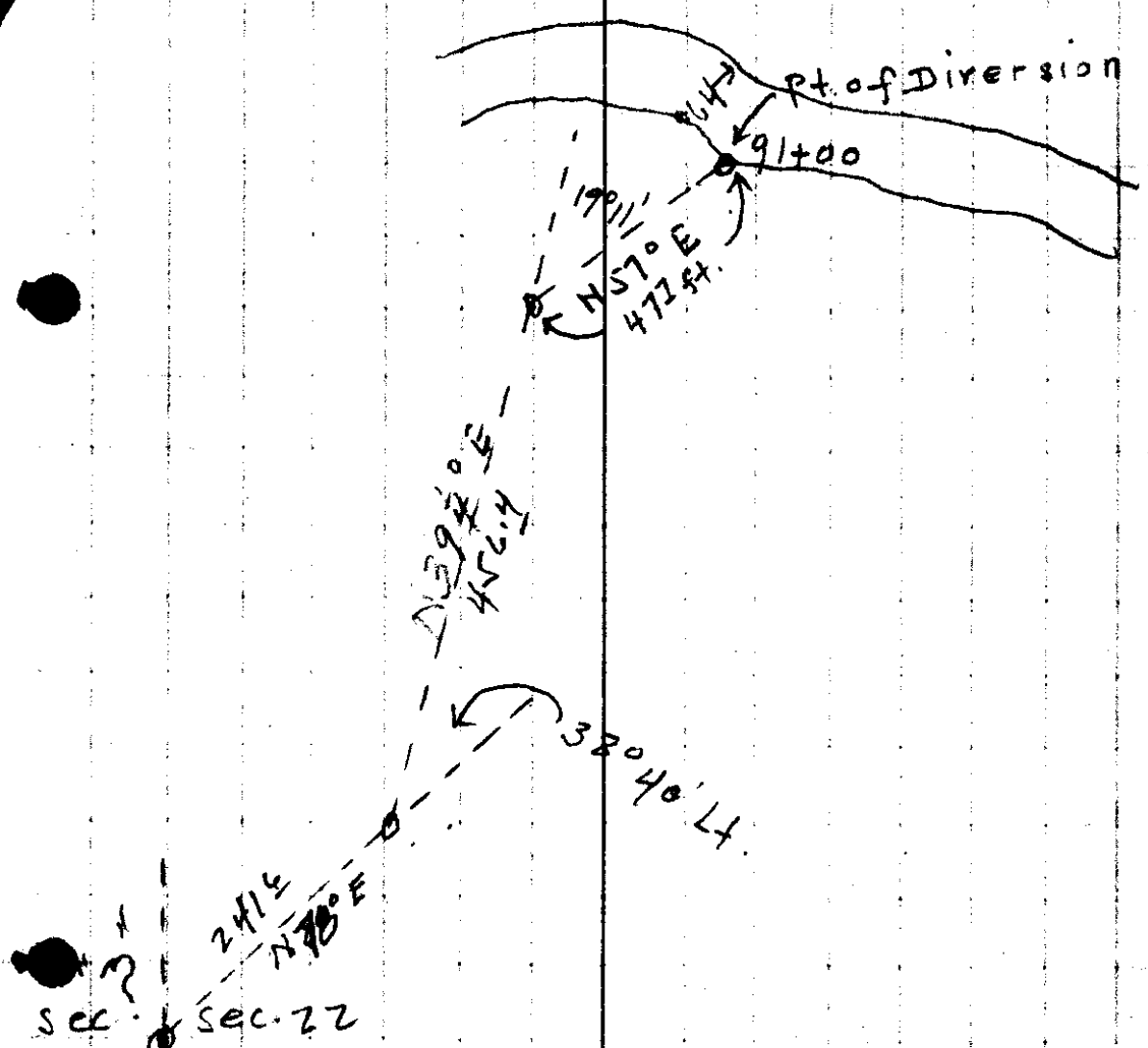
CS 4-22





CS4-22

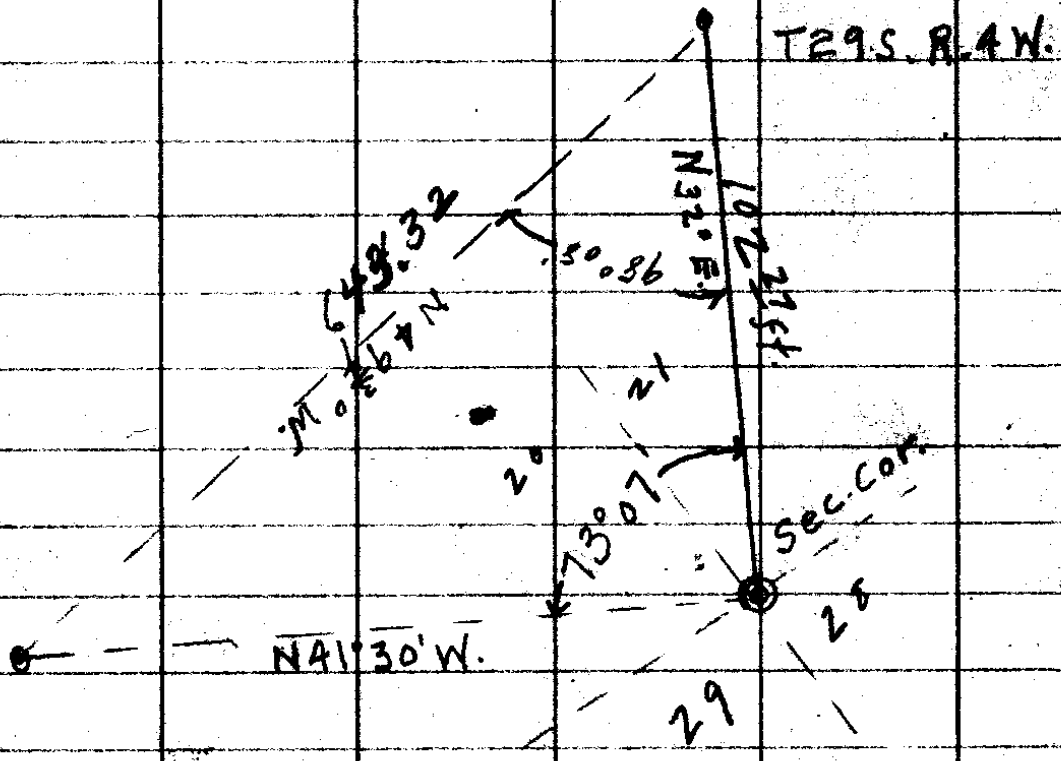




Sec. 21

Sec. 22

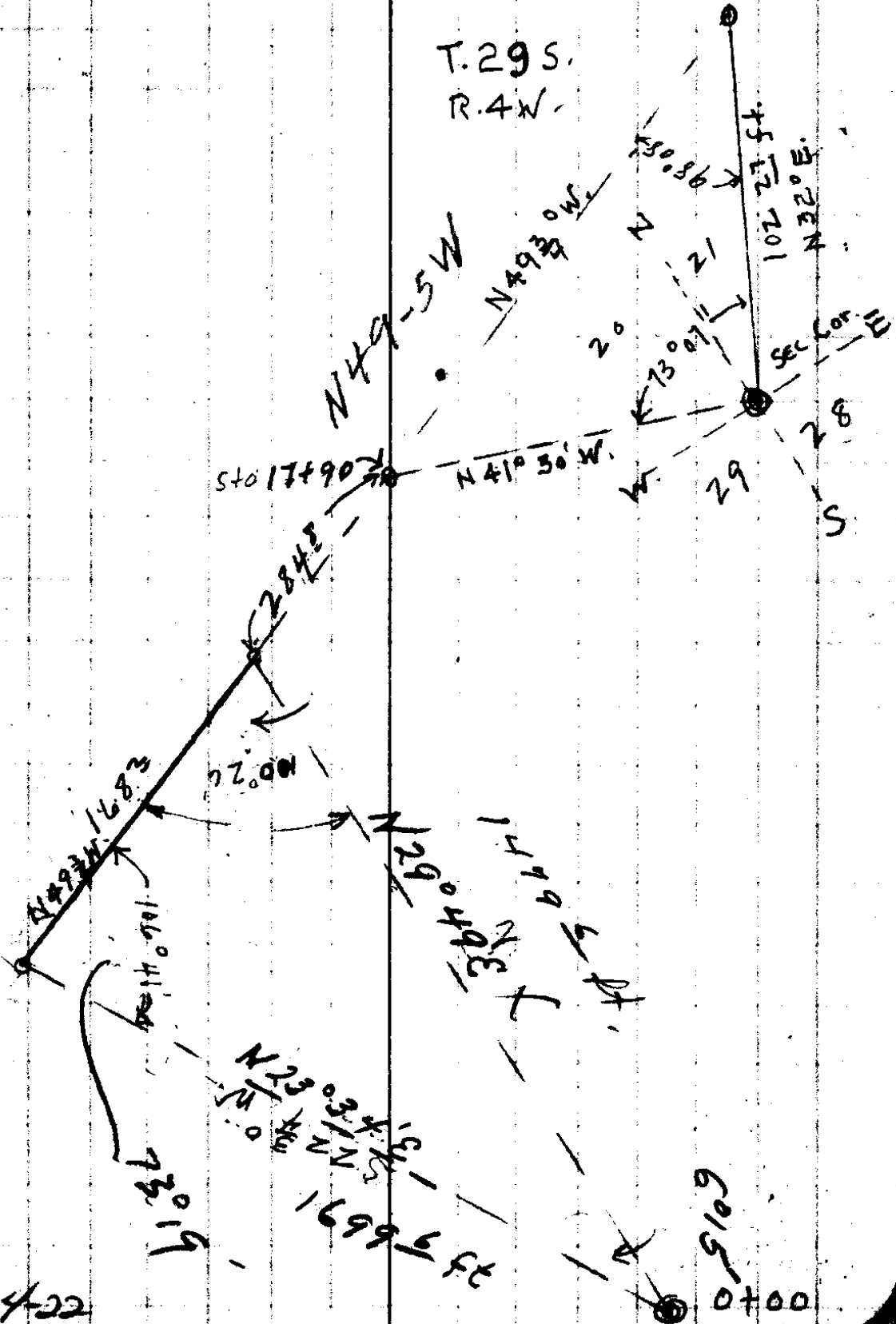
1/4 cor bet. Sec. 21 & 22 Twp. 29 S. R. 4 N.  
 at S. E. Cor of Ike Weavers Ranch  
 Hans Weaver D.L.C. This is  
 the W.C. 39.

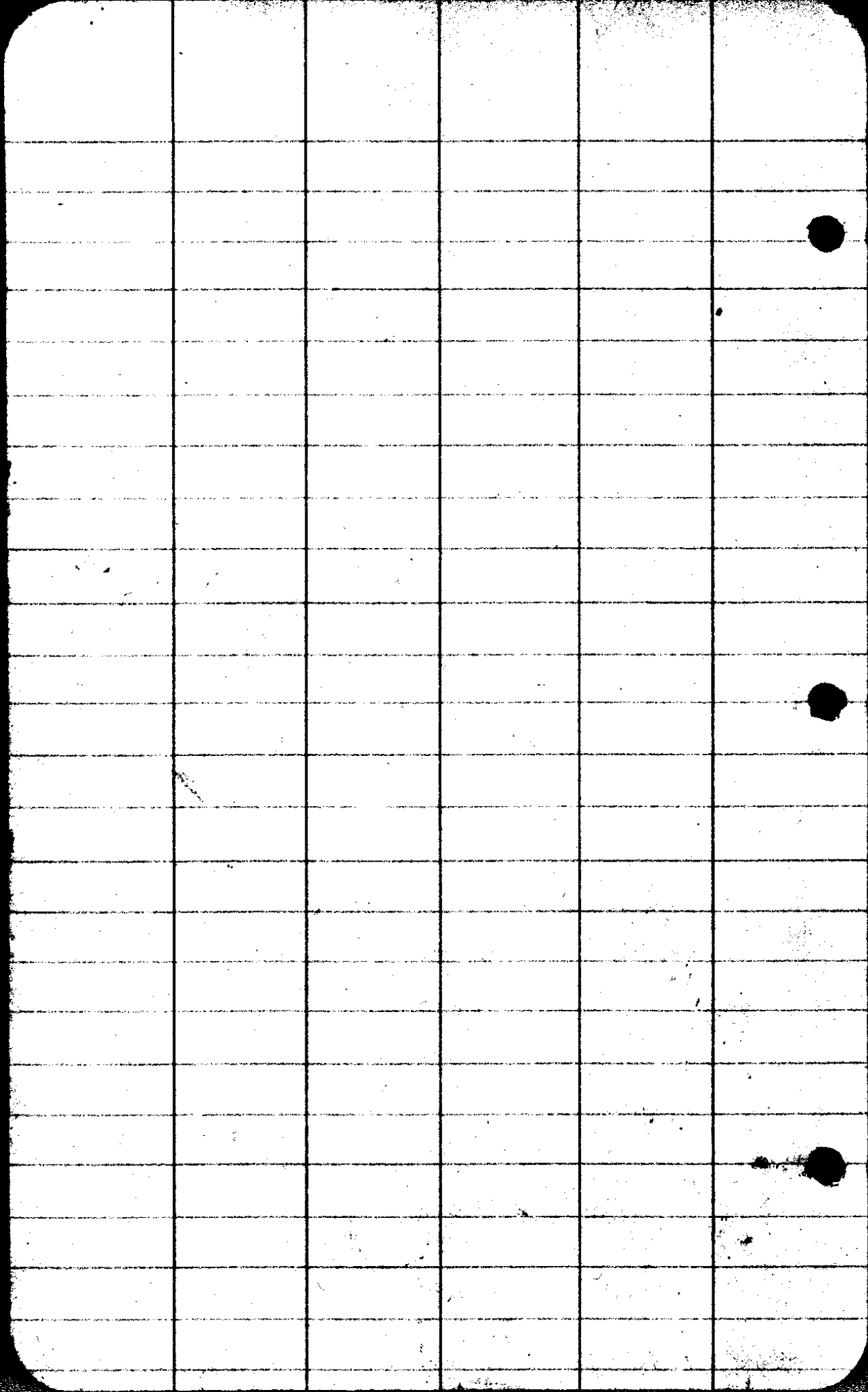


# Tie Line of Art. Dyer Irrigation System.

Nov. 12-22

T. 29 S.  
R. 4 W.





CS 422.

STG	+	$\Delta$	-	R	Elev
		110.84			
TP	10.02	110.82	10.04		100.80
63				9.92	100.90
64				9.82	101.00
65				9.72	101.10
TP	7.95	109.05	9.72		101.10
66+00				7.85	101.20
67				7.75	101.30
68				7.65	101.40
TP	0.53	101.93	7.65		101.40
69				0.43	101.50
70				0.33	101.60
TP	2.59	104.19	0.33		101.60
71				2.49	101.7
72				2.39	101.8
TP	4.44	106.24	2.39		101.80
73				4.34	101.90
74				4.24	102.00
75				4.14	102.10
76				4.04	102.20
TP	5.32	107.52	4.04		102.20
77				5.22	102.30
78				5.12	102.40
TP	3.29	105.69	5.12		102.40

S. E. No. 4/22

Chas H Kaiser

Water Filing

Sta

Dist

EA

EA

MC

PT of Vine Maple.  
Diameter 6"

134<sup>6</sup>

70-23

S 14<sup>1</sup> W

S 14-03 W

Δ 6

228<sup>6</sup>

46°-38

6

S 6° W

S 6-40 W

Δ 5

264<sup>8</sup>

20-46'

S 52-15 W

S 52-18 W

4 Δ

445<sup>0</sup>

13°-13'

S 55 W

S 55-04 W

3 Δ

637<sup>2</sup>

49-47

S 42 W

S 42-57 W

2 Δ

410<sup>2</sup>

56-08

N 88-30 W

N 88-22 W

1 Δ

56<sup>0</sup>

S 35-30 W

S 35-30 W

Cor sec  
6