

36
66
20
20
22

C. S. File No. 4/1

CS 4/1

①

Begon at ~~S~~ cov. Cl. 43
as set

cov

Var. 2 1/4' E
S 4° W S 3° 50' W
S 79° 05' W
S 79° W

1

104° 45' R - 63 8

S 0 S 0° 46' E

2

4° 36' L - 234 0

1° 10' L 4° 125 - S 1° 40' E S 1° 56' E

3

1° 47' R 14° 110 3/3 S 0° 10' E S 0° 09' E

4

84° 20' L 13° 178 0/6 S 85 1/2 E S 84° 29' E

W 6 cov Cl. 44. Found O.B.T. & REM " 9

15" B.O. dead.

Set I. Pipe for cov

6" W.O. S 15 1/2° W 6 8 ft

18" B.O. S 75 1/2° E 53 5

5

84° 39' R 18° 60 0/24 South S 0° 10' W

6

0° 33' L 26 1/2 173 0/18 S 1° E S 0° 23' E

7

85° 18' R - 300 7/86 S 84 1/2 W S 84° 55' W

4

18° 34' L - 517 0 S 66° 10' W S 66° 21' W

124⁸

107²

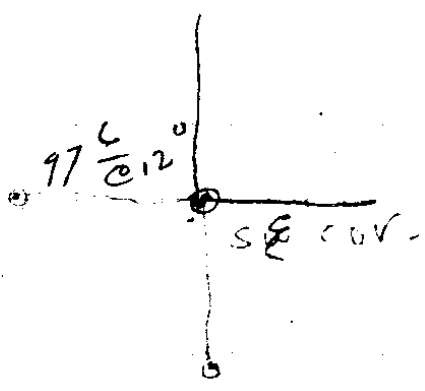
173⁴

57^L
= N 0° 10' E Solar

154⁸ Road

386²

517⁰

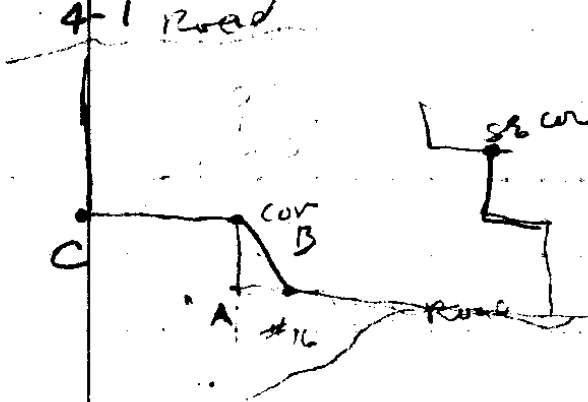


along Road

CS 4/1

(2)

8					S66°21'W
	18°06' R	-	473°	S84°W	S84°27'W
9					
	22°20' L	-	95°	S60°2'W	S62°07'W
10					
	81°49' R	-	169°	N37°W	N36°04'W
11					
	42°48' L	8°	217°	N79°2'W	N78°52'W
12					
	0°15' L	-	358°	N79°2'W	N79°07'W
13					
	0°11' L	-	790°	N79°45'W	N79°18'W
14					
	31°26' R	-	268°	N48°2'W	N47°52'W
15					
	30°33' L	-	-	N80°W	N78°25'W
16					
	63°05' R	5°	300° 300°	N16°W	N15°20'W
17					
	63°30' L	-	↗ 28°	N80°W	N78°50'W ✓
Cor					
17					
	74°37' L	8°	288°	S89°W	N89°57'W
18					
	0°52' R	-	159° 193°	west	N89°05'W
19					



old hub by Bridge

306
141
159

209°

old fence

E side B. Patch

Oak stick by I. Ditch

COV by Fence

{ 298° #16 (To I. Point of old Survey)
306° } 198° East of I. Point Cor A

283

2852

3526
1

CS 4/1

3

19

2° 05' R

-

171³

N 89° 05' W
N 87° 00' W ✓

C cor

19

2° 07' R

5°

179⁴

N 89° 05' W
N 87½° W N 86° 58' W

20

86° 21' R

9½

300⁰₄₂

N 1½° W N 0° 37' W

21

1° 32' R

5°

226⁹

N 0° E N 0° 55' E

22

Base

102° 34' R

0

288°

S 77° E S 76° 31' E

23

Set

F site # 2

2

112° 23' R

5°

300⁰
245⁵₉

~~S 54° 20' W~~ S 14° 05' W
S 13° E S 30° 26' E

1

7° 02' R

6°

201¹

S 3° W S 3° 26' W

W

74° 48' L

9½

Base
205⁴₂₅

S 72° E S 71° 22' E

3

Set P. site 2

S 3° 56½' W

(Tie) P. To Cor. is N 24° W (12 ft)

P

62° 47' L

9°

300⁰

S 59½° E S 58° 51' E

1

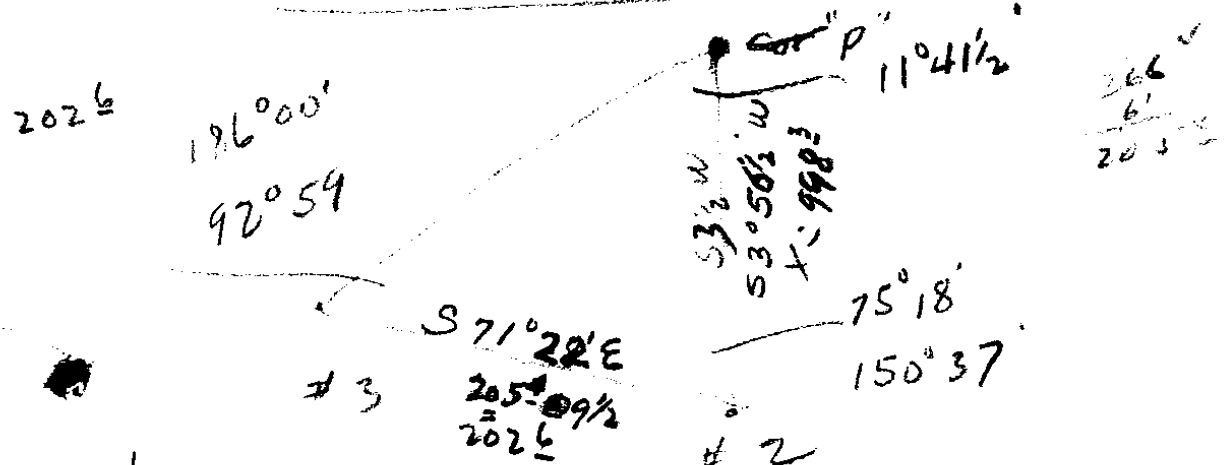
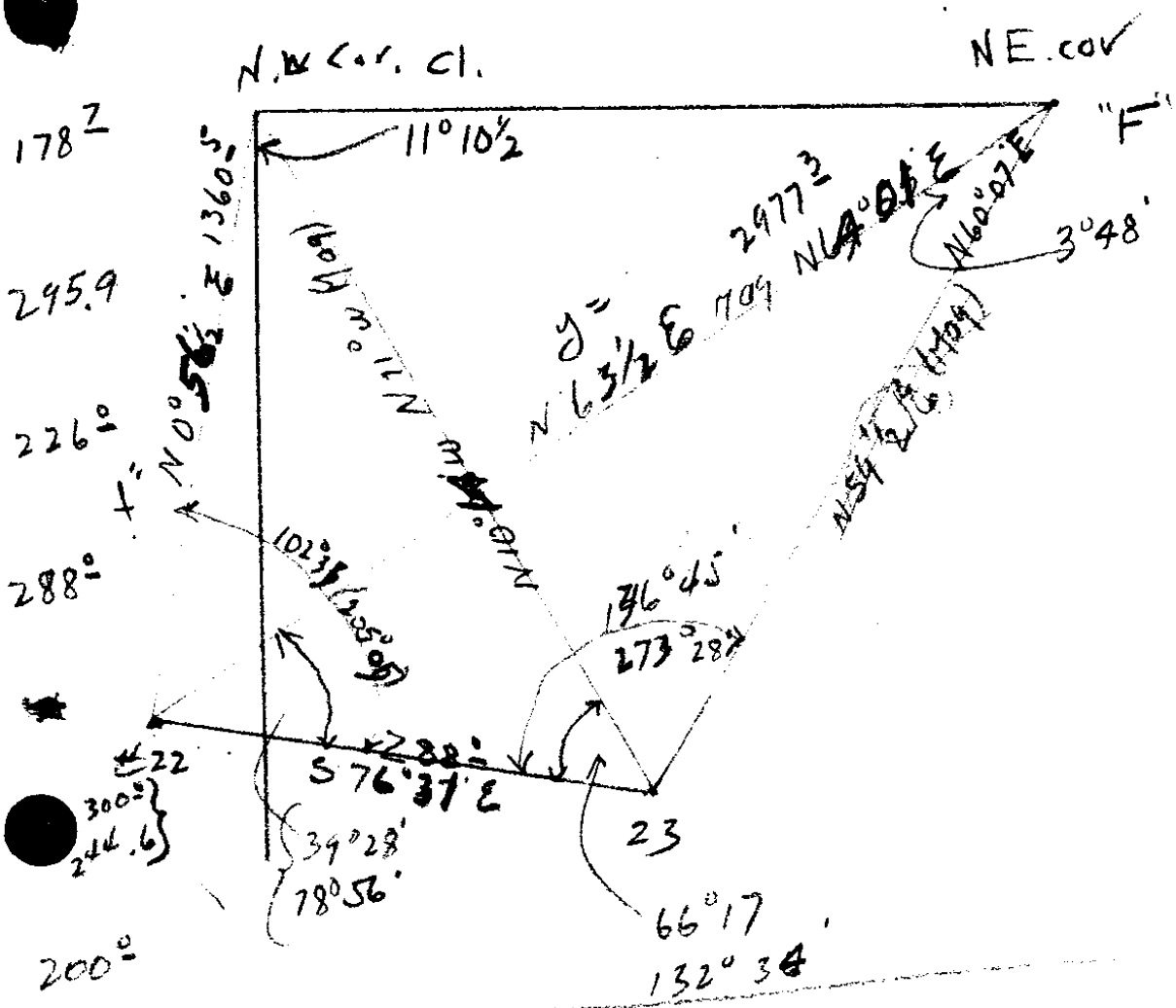
6° 17' L

10½

299⁷

S 65½° E S 65° 00' E

2



#1 fence w 10° N/O of #1
 #2 " 7' " " #2

- (15)
- | | | | | | |
|---|----------|----|------|---------|-----------------|
| 2 | 0°06' R | 5° | 292° | S 65½ E | S 65°08' E |
| 3 | | | | | S 65°02' E |
| 4 | 24°14' L | - | 196° | S 89½ E | S 89°10' E |
| | 3°34' R | - | 165° | S 86° E | S 85°42' E |
| 5 | Mag | - | 53° | | N 71° W N 71° W |

SW Coy Cl. 43, REN. # 8
 set from O.B.T. 9 14" Laurel
 Rotted. set I.P. pipe for Cor.
 Marked 24" W.O. S 85° W 74.5 ft
 Re Marked O.B.T.
 14" Laurel stub S 40° W 8 ft

Compute closing line

CS 4/1

5

Matthews, S.B. No. line C1. 43.

from NE cov L to NE cov.

1		12°	97 ⁶ / ₂₁		S 79° 05' W
	17° 06' R	18 1/2	204 8	N 84° W	N 83° 49' W
2	4° 46' L	15 1/4	300 ⁰ / ₃₀	N 89° 45' W	N 88° 35' W
3	3° 50' L	-	63 ¹	S 87 1/2° W	S 87° 35' W
4	2° 00' R	-	336 ²	S 89° W	S 89° 35' W
5	1° 58' L	16 1/2	300 ⁰ / _{43¹}		S 87° 37' W
6	53° 18' R		20 ^L	N 39 1/2° W	N 39° 05' W

hub-End

Tie To C1. Cor. from #6. 30° 0' R 71 8/11 ft, S 62° 23' W

L Tie.

end hub site # 6 F.S # 46' 41' L N 85° 46' E
N 85° 42' E

①

95⁵

194²

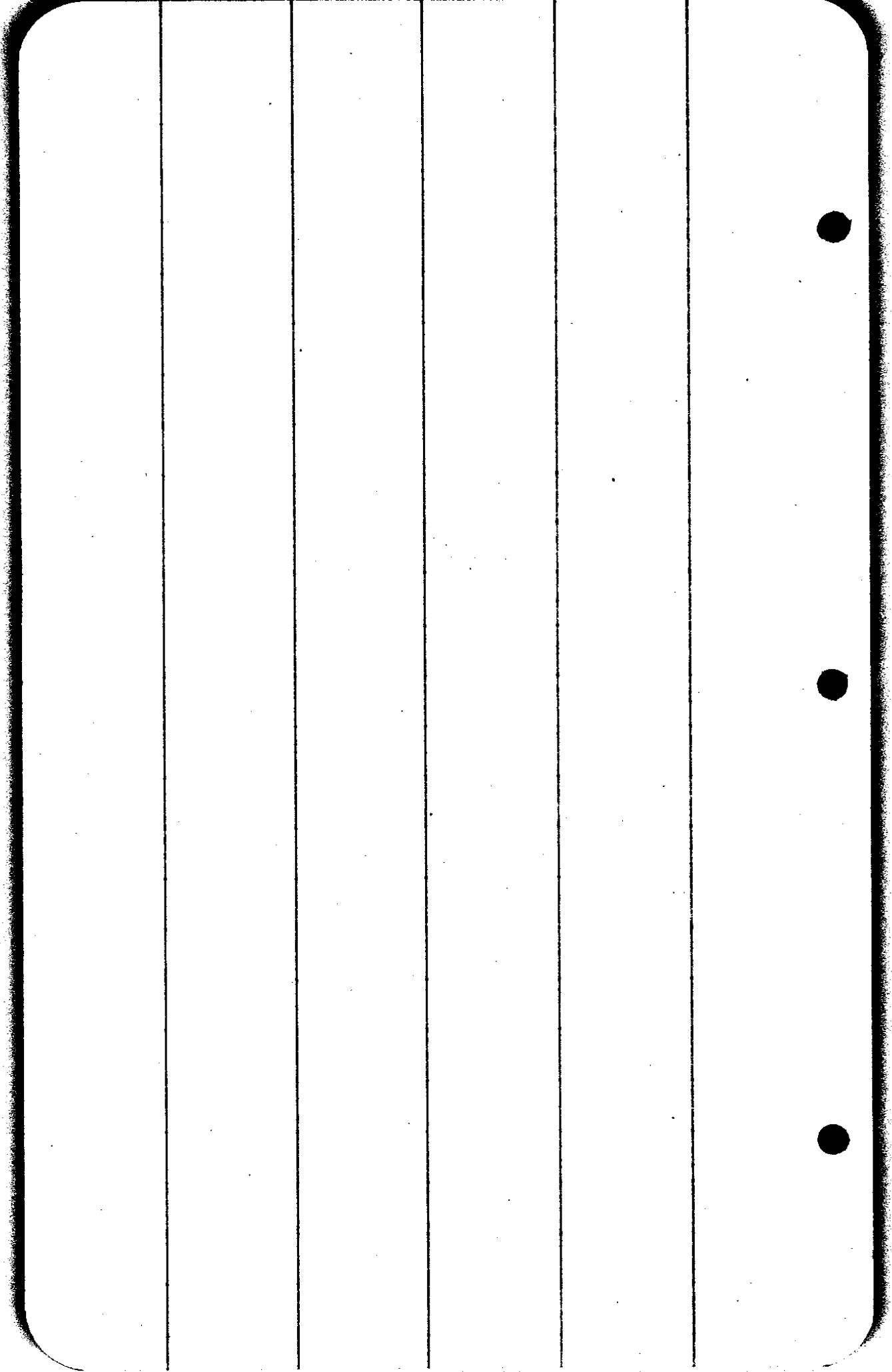
292⁴

63¹
336²

330⁷

70¹

CS 4/1



Sev Cor. Cl. 43. 14" Mad. S 42° W
 12 links. Th N 60° 26' set
 post. for NW cor. hant. a
 B.O. 10' S 18° E 0.37 ch.
 + B.O. 20" N 11° W 1.47 ch.
 ch. E.
 SE cor. limb maple N 13° W
 77 links.

Jas Cor.
 Beg. at SW cor. 15' B.O. N 75° E 210
 B.O. 14" S 10° E 32
 N. 4³⁵ To SE cor. Cl 45.
 15' creek; 24' creek, 49 1/2' NW
 cor. Cl. 45. ; 60' NW cor. C 44
 on line bet S 17' 20; 2.90 ch
 E of 1/4 cor, set stone.

E cor. of line 44
 36 1/20 cor. sec 16-17-20-21
 40' NW cor. C 44; stone 7x14
 50' on East line 44.
 40' To cor. at L in N+E boundary
 of 644. 10x18 stone.

CS 4/1

East on line 44.

40th ch. Me cor C 44. B.O. 14" S 40° W 34

S. on East line C 44.

20th Me cor C 44.

W. ^{89° 36'} 26" S 30° E 92 links
True S. body C 44.

36 08 X line bet 20 & 21

20 38 ch 917 Me cor
79 35 To Me cor C 44.

IRA B. RIDDLE, COUNTY CLERK
S. W. STARMER, SHERIFF
J. E. SAWYERS, TREASURER
FRANK L. CALKINS, ASSESSOR
O. C. BROWN, SCHOOL SUPT.
M. E. RITTER, CORONER
F. C. FREAR, SURVEYOR

DOUGLAS COUNTY

ROSEBURG, OREGON

COUNTY JUDGE, GEORGE K. QUINE
COMMISSIONERS: EDWIN WEAVER
R. W. LONG
DIST. ATTORNEY, GEORGE NEUNER JR
COUNTY COURT
FIRST WEDNESDAY IN EACH MONTH

Description of Line dividing property for Mr. Lindbloom.

Beginning at a point, which is a wood stake on the property line between Gus Lindbloom and S. W. Leake 18.87 chains North and 12.95 chains East of the Southeast corner of the Wm. A. Willis D. L. C. #45 in Sec. 20 T. 27 S. R. 4 W. Douglas County, Ore., thence S 75°00' E 22.36 chains, thence S44° 09' E 4.07 chains, thence S 75° 50' E 20.61 chains to a stake at foot of 18" Red Cedar, thence S 53°15' E 2.56 chains to the North line of present County road and intersecting center line of said road at Engineers Station 88 ± 50, thence along North line of said road N67°59'E 227.5 ft, thence N86°57'E 249.1 ft, thence N.71°20'E 241.6 ft thence N63°16' E 361.7 ft, thence S 88°33'E 232.1 ft, thence N76°13'E 185 ft. to a point on North line of said road being on East line of the Jas. Cox D. L. C. #44 and 202.0 ft south of the approximate S.E. Ell corner of said claim #44.

Bearings Magnetic

Var. 21°15 E

Surveyed Oct. 15th and 22nd

G. G. Stewart Deputy Co. Surveyor

N. B. Richardson Chain.

In presence of Gus Lindbloom

and Shelby Matthews

C. S. File No. 4/1

CS FILE FOLDER

CONTAINS

MORE

INFORMATION