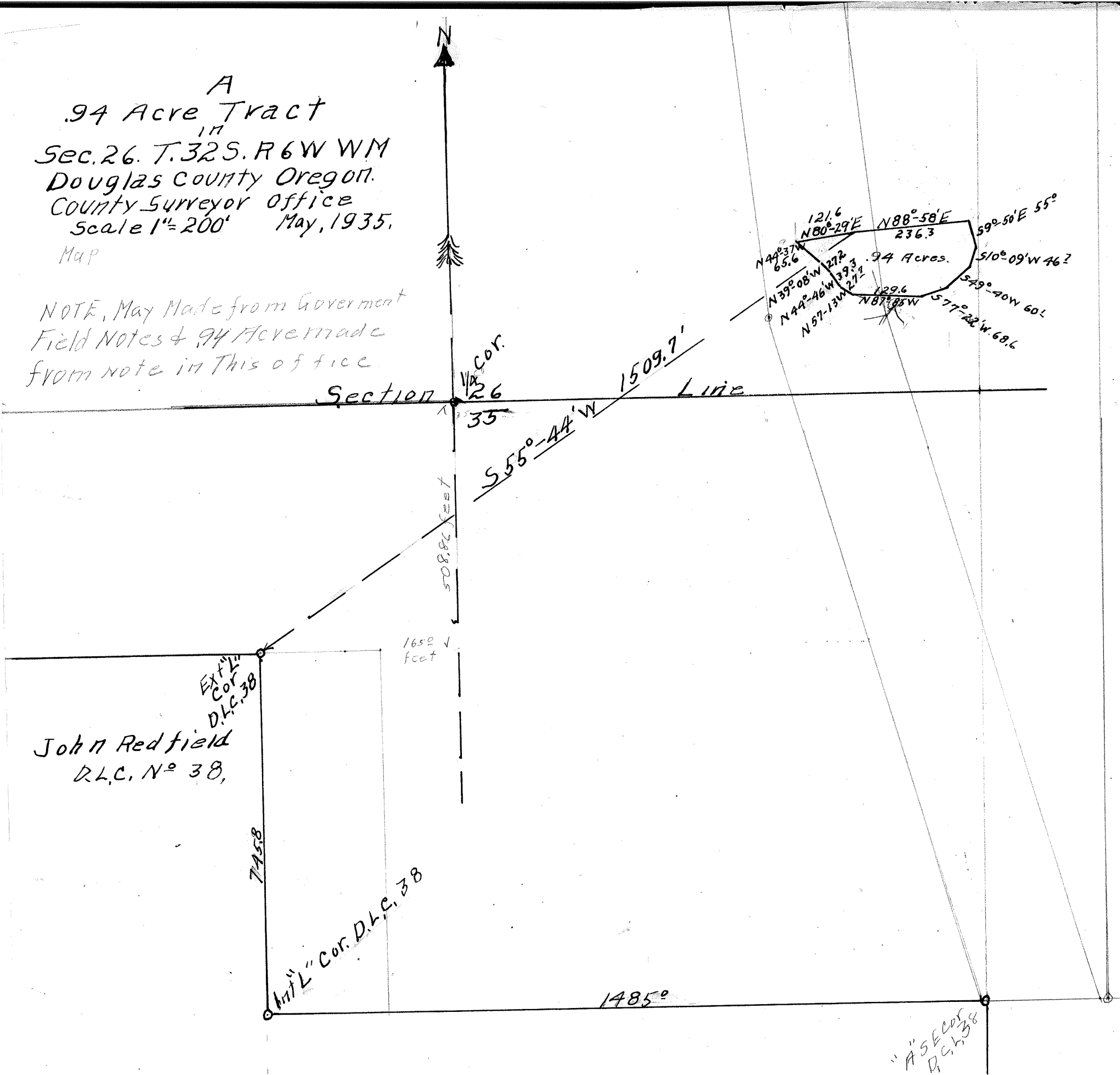


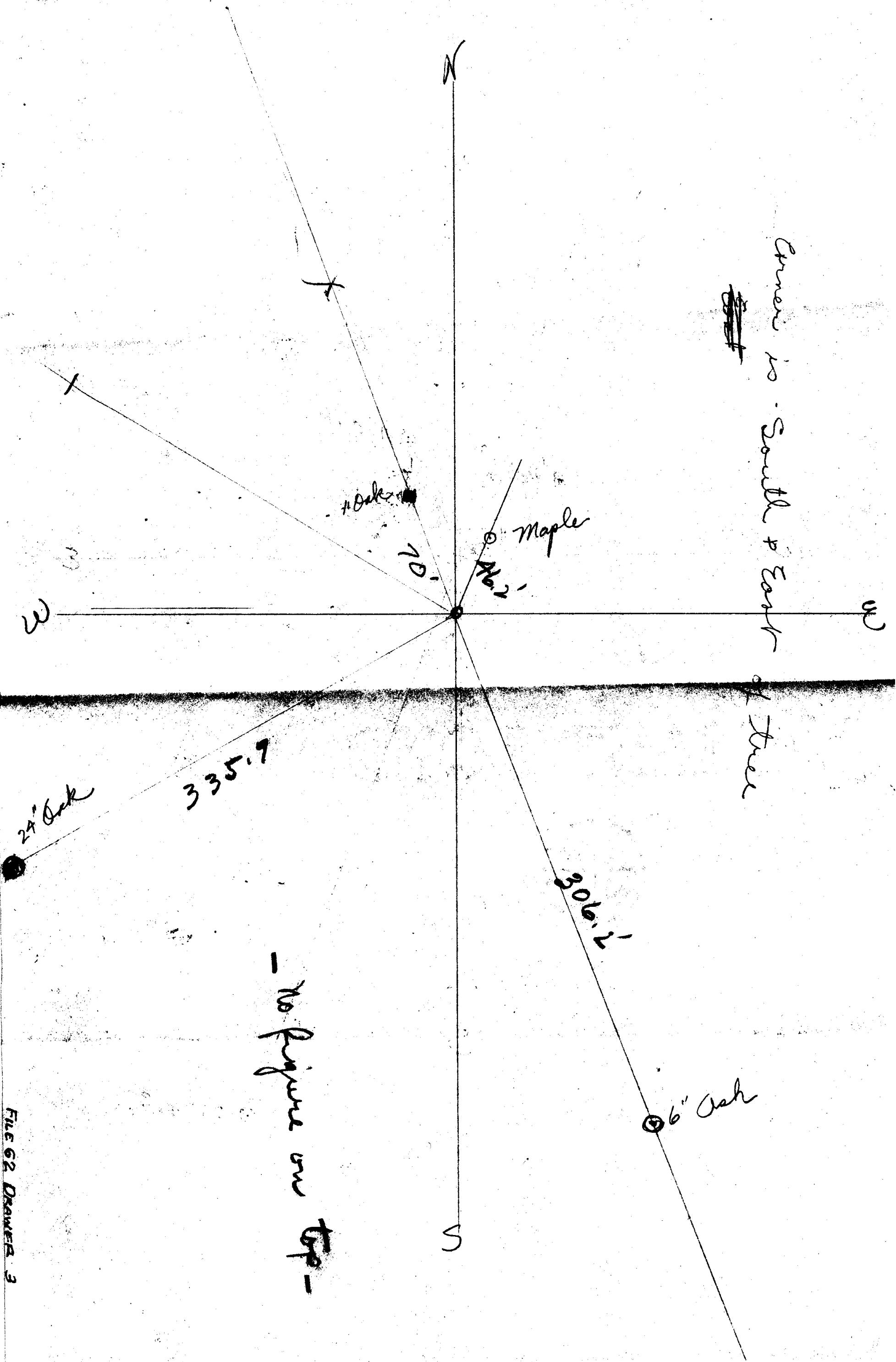
A  
 .94 Acre Tract  
 in  
 Sec. 26, T. 32 S., R. 6 W. WM  
 Douglas County Oregon.  
 County Surveyor Office  
 Scale 1" = 200' May, 1935.  
 Map

NOTE, Map Made from Government  
 Field Notes & .94 Acre made  
 from note in this office.



John Redfield  
 D.L.C. No 38,

"A" SEC. 26  
 D.L.C. 38





CS FILE FOLDER

CONTAINS

MORE

INFORMATION