

C.S. Form 3/54

Sec 29 S Row

Δ12	25	102		
Δ11	25	49.5	8° R	
Δ10				
131.0	135E	79.5		
Δ9				
105.5	164.5		91° 09' West	
Δ8				
	82.5			
Δ7				
	65.5			
				112.5
		122.5		
	off at cut			
		131.8		
	off at cut			
Δ2				
		141.8		
		54.5	South	

5-54
For Sam Whitsett 3

Records

32-33
57 Mah NT.
B. 20" S 66 W 170.7
" 14" N 25-30 W 148.8
W.O. 10" N 78 E 68.2
B.O. 10" S 24 E 120.2

Oden
Bill Dolan
S. L. Whitsett.
Oden.

C. S. File No.

3/54

Δ 24
227 19-30 214.2 418°

Δ 23
210 14 2038

Δ 22
201 10 1980 Dist 17624

Δ 21
295 16 2940

Δ 20
2975

Δ 19
220 19 2084

Δ 18
149 4-30 1388

Δ 17
154 19-30 1462

Δ 16
5 south on hi

Δ 15
90°

Δ 14
5 off line N

Δ 13
40° 5R

Δ 12

1214.9

3

C. S. File No. 3/54

Δ36		Funa
	457	
Δ35		
168 ⁶ ₁₀₀₀	168.3	
Δ34		
	1198	
Δ33		
127 ¹¹ ₄₅	1243	
Δ32		
	1130	722 ⁸
Δ31		
TOP	655	
Δ30		
212 ⁵ ₂₀₃₀	1990	365 ⁷
Δ29		
107 ¹⁹	101.2	
Δ28	1/2 mile	
	81.8	
Δ27		
139 ⁹ ₄₃₀	139.5	
Δ26		
144 ²	143.4	
Δ25		227.5 ³
	94.9	TOP
Δ24		

3647

C. S. File No. 3/54

ΔV
70⁹ - 12⁰ 694

ΔQ
66⁵ - 24³⁰ 60.5

$\Delta 8$
1/2

I
5108

ΔH
207² - 26 186.2

ΔG
162⁵ - 25⁴⁵ 146.4

ΔF
141⁴ - 12¹⁵ 138.2 5L

ΔE
25 } 49.8 10R

ΔD
25 } 5L

ΔC
66⁴ - 15⁴⁵ 64.0

ΔB
139² - 14 139.0

ΔA
70⁰ - 16¹⁵ 104.1

$\Delta 2$
8

89⁰ - 45L North

3-54

Mar 6-23

Time 11-30 AM

05 * R.M.

Ver 41° 50'

Hor 71° 20'

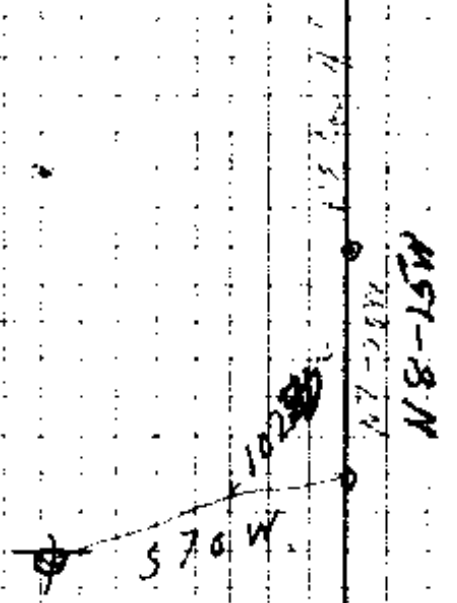
06 corner

March 6-23

5.00 AM

Ver 12-40'

Hor 102-~~20~~



083 E

14 W

05 3/54

Adm. Whitcomb, District,

Sta	+	∇	-	R	Elev
	5.95	105.95			100.00
1+00				5.05	
2+00				6.15	
3+00				6.25	
m H ₂ O	3.15	103.88	5.22		100.73
1+00				2.92	100.96
1+50				2.82	
2+00				2.62	
3+00				2.50	
4+00				2.25	
	3.15	103.15			100
				3.40	
				3.65	
52+00	4.06	110.00			105.94
3+50				4.18	
3+00				4.31	
4+50				4.43	
4+00				4.56	
4+50				4.68	
5+00				4.81	
T.P.	5.01	110.60	4.81		105.59
4+50				5.13	
56+00				5.26	
56+50				5.39	

CON. 11 202
 2295
 90°-04'
 1900
 65-45

510.2

24°-11'
 11

89-45
 154-68
 27
 28

C. S. File No. 3/54

△

2.94²

△ H

214¹

214⁰

1072R

△ G

252²

252.2

858⁰

△ F

1202⁶

119.6

486²

△ E

187²

△ D

132²

298⁶

605 OC 21

△ R

57²

1000

CS FILE FOLDER

CONTAINS

MORE

INFORMATION