

Terrace Ave

FLINTS ADDITION

Cordon

Lane St.

$577^{\circ}42'E$

19 18 17 16  
Wollenberg's Addition

Dixon

174.9

30'

~~517.4~~  
183.7

I.P.

40'

7.40'

1.40'

Alley

$N89^{\circ}17'E$

SE EXT L Cor  
D.L.C. N289

29.6

40'

63.5

Hamilton  
Lot 24

40'

Lot 25

$S55^{\circ}09'E$   
528.965

$S70^{\circ}04'E$

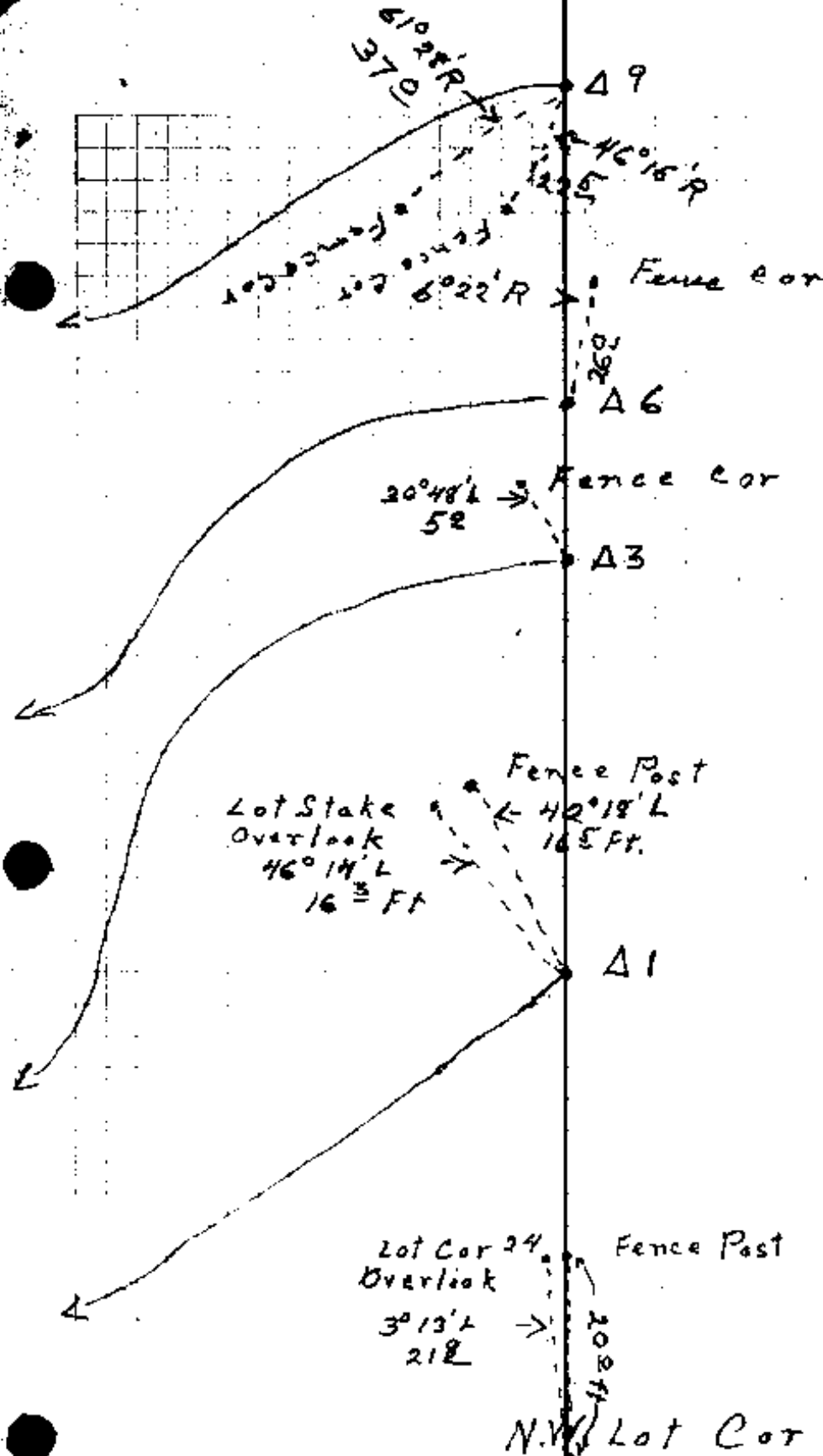
40'

Lot 23

OVERLOOK ADDITION

C. S. File No. 9/34

| 1                      | Ned Dixon        |                         |                     | Rich.<br>No. |
|------------------------|------------------|-------------------------|---------------------|--------------|
| Feet                   | L                | C.C.                    | M.C.                |              |
| Δ 10                   | 89 <sup>7</sup>  | 23° 2' L                | N 23° 08' W         |              |
| Δ 9                    | 120 <sup>9</sup> | 0° 3' R                 | N 0° 06' W          |              |
| Δ 8                    | 147 <sup>6</sup> | 100° 20' R              | N 0° 09' W          |              |
| Δ 7                    | 212 <sup>8</sup> | 112° 28' R<br>67° 31' R | S 79° 31' W         |              |
| Δ 6                    | 90 <sup>8</sup>  | 34° 34' L               | S 32° 58' E         |              |
| Δ 5                    | 410 <sup>0</sup> | 1° 36' R                | S 1° 36' W          |              |
| Δ 4                    | 144 <sup>9</sup> | 95° 34' R               | S. S 0° 30' E       |              |
| Δ 3                    | 175 <sup>0</sup> | 4° 58' L                | N 84° 26' E N 84° E |              |
| Δ 2                    | 346 <sup>2</sup> | 85° 57' R               | N 89° 24' E         |              |
| Δ 1                    | 120 <sup>7</sup> | 5° 12' R                | N 3° 27' E          |              |
| N.E. Cor.<br>Lot       | 183 <sup>7</sup> |                         | N 1° 45' W          |              |
| S.E. Cor<br>Wellenberg |                  |                         |                     |              |



C. S. File No. 3/3A

2

Dixon

Rich  
No.NE Cor  
WallenburgS.E. Cor  
Wallenburg183<sup>±</sup>48<sup>5</sup>

Δ 12

178<sup>±</sup>

Δ 11

80<sup>e</sup>

Δ 10

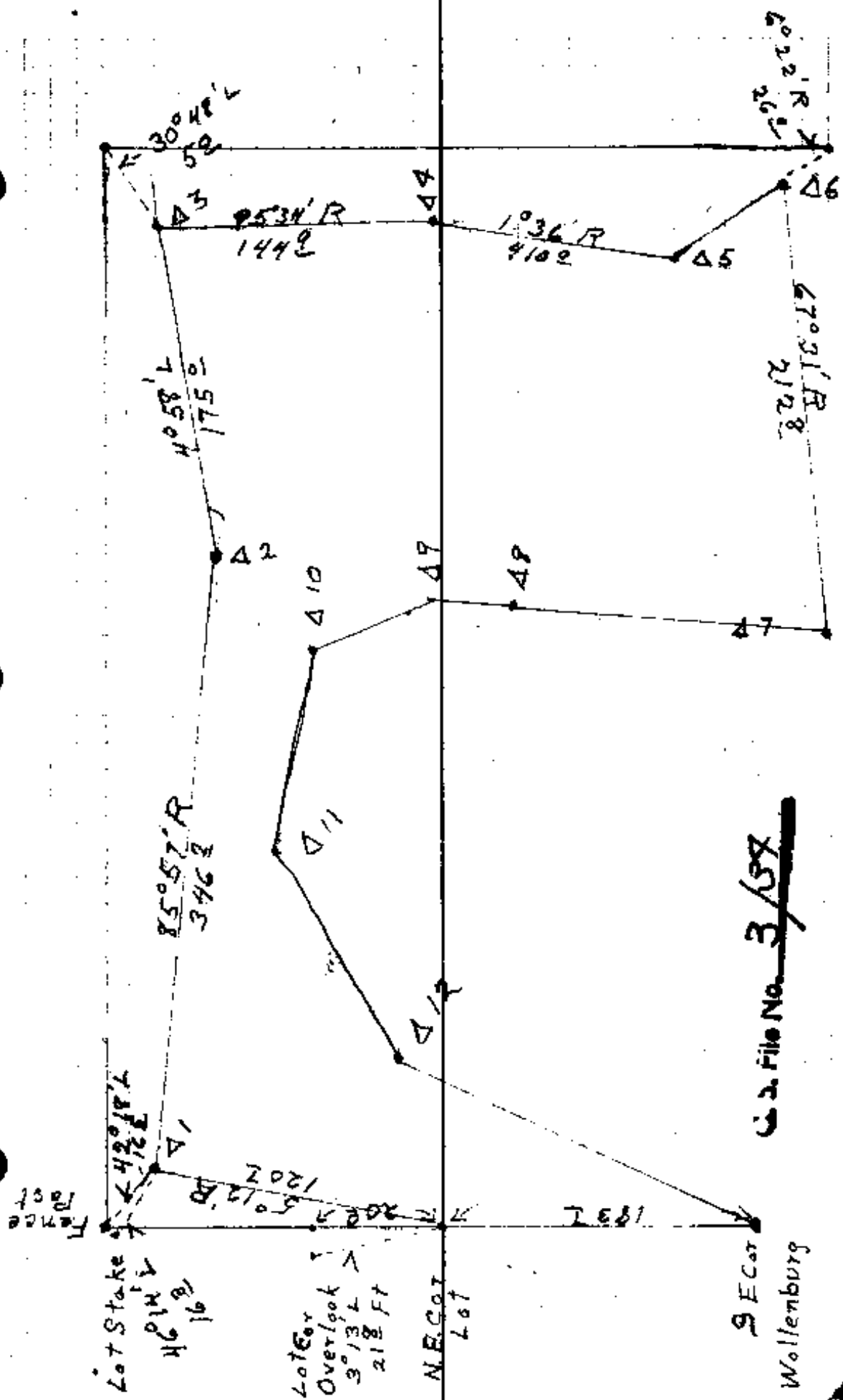
142° 9' R N 0° 08' W

52° 55' L S 97° 47' W S 36° 15' W

15° 56' L N 89° 18' W

50° 14' L N 75° 22' W

N 23° 08' W



C.S. File No. 3/57

S.E. Cor  
Wollenburg

Lot Stake  
46°14' L  
16

Lot Overlook  
3°13' L  
218 FT

N.E. Cor  
Lot

3

Dixon  
C.C.EPP  
YES

|   |   |   |   |
|---|---|---|---|
| $\Delta 1$<br>8-40<br>80 <sup>+</sup>                               | 79 <sup>?</sup>                               | 50-45L                                    | N75-30W N74-37W   |
| $\Delta 10$<br>3 <sup>+</sup> 89 <sup>+</sup>                       | 89 <sup>±</sup>                               | 23-00L                                    | N25 W N23-52W   |
| $\Delta 9$<br>6-45 <sup>+</sup> 121 <sup>+</sup>                    | 120 <sup>±</sup>                              | 6 <sup>+</sup> -26L                       | N1-30W N0-52W   |
| $\Delta 8$<br>10 <sup>+</sup> 148 <sup>+</sup>                      | 145 <sup>±</sup>                              | 101-20R                                   | N5 E N5 <sup>+</sup> -34 E  |
| $\Delta 7$<br>22-30<br>220 <sup>±</sup>                             | 204 <sup>±</sup>                              | 112-32R                                   | S84-W S84-14W   |
| $\Delta 6$<br>91 <sup>+</sup> 73 <sup>+</sup>                       | 90 <sup>±</sup>                               | 34-26L                                    | S28-30E S28-18 <sup>+</sup> E   |
| $\Delta 5$<br>7-45<br>143 <sup>+</sup><br>266 <sup>+</sup><br>409.7 | 143 <sup>+</sup><br>266 <sup>+</sup><br>409.7 | 6-06R                                     | S5-30W S6-08W   |
| $\Delta 4$<br>10 146 <sup>+</sup>                                   | 144 <sup>±</sup>                              | 95-34R                                    | South S0-02W  |
| $\Delta 3$<br>20-30 <sup>+</sup><br>184 <sup>+</sup>                | 172 <sup>+</sup>                              | 4 <sup>+</sup> -58L                       | N84-15E N84-28E   |
| $\Delta 2$<br>55 <sup>+</sup><br>10-30<br>13-10<br>300              | 292.1<br>52.3<br>344.3                        | 85-51R                                    | Ecut N89-26E  |
| $\Delta 1$<br>5-30<br>5-12 <sup>+</sup>                             | 120 <sup>±</sup>                              | 5 <sup>+</sup> -14 <sup>+</sup> R<br>1-45 | N3-45E N3 <sup>+</sup> -29 <sup>+</sup> E                             |
| NE on<br>Lot  | 183 <sup>!</sup>                              |   | N1 <sup>+</sup> -45 <sup>+</sup> W N1 <sup>+</sup> -45 <sup>+</sup> W |
| SE on   |   |   |   |

C. S. File No. 3/34

4

Dixon

EPP  
YES

Lot

52 cm  
Δ 1/4

0 1/2  
11 0  
180

Δ 1/2

142°-09'

48<sup>5</sup>

52-56L

177<sup>2</sup>

15-56L

N1-45W N1-20W

S36 W S36-21W

S89-30W S89-27W

5.

DIXON

yes

34°40'R  
125

Fence Cor

410

C. S. File No. 3/34



C. S. File No. 3/34

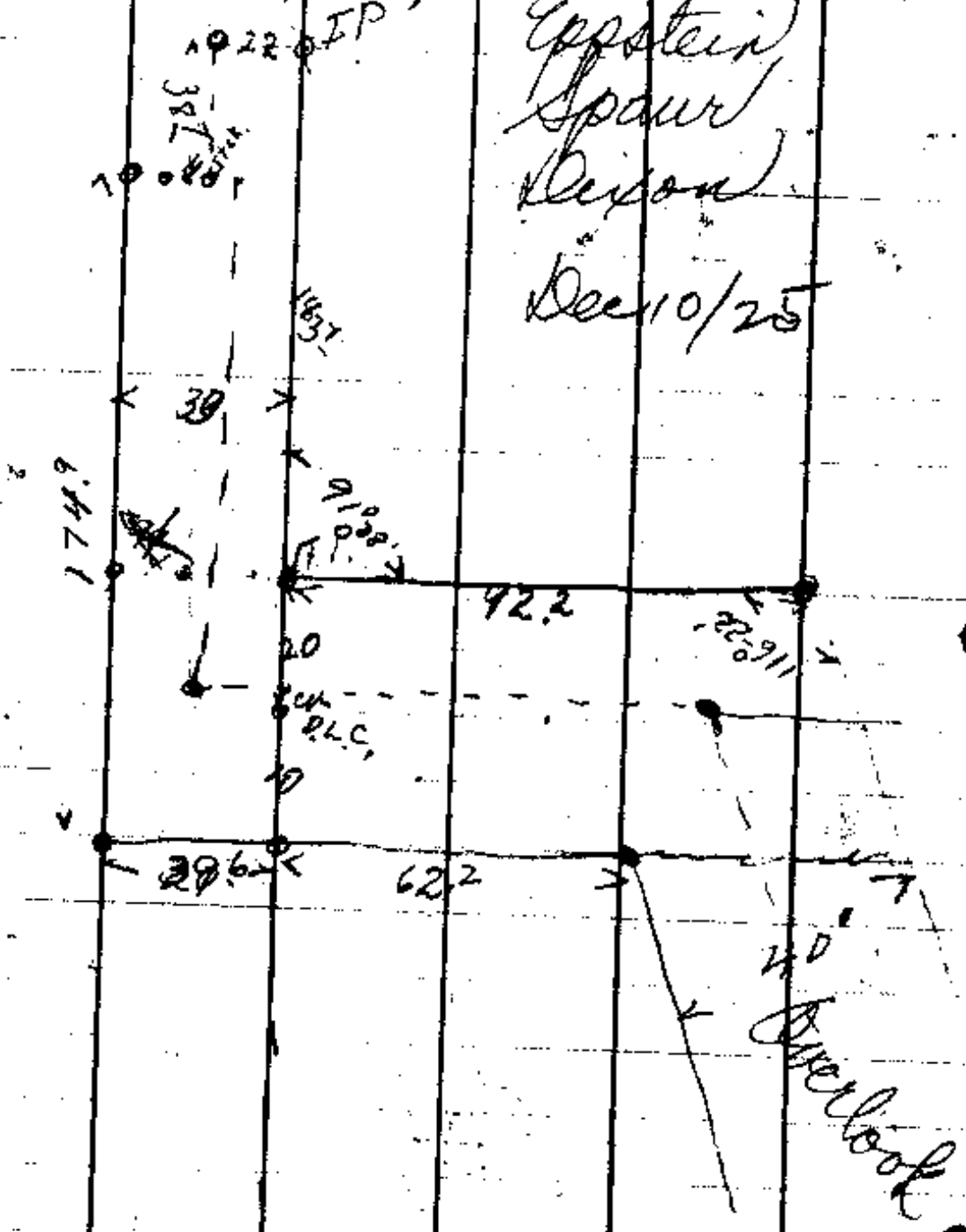
Street Survey  
Ned Dixon

3-34

Lane St,  
IP

Epstein  
Spaw  
Wilson

Dec 10/25



CS FILE FOLDER

CONTAINS

MORE

INFORMATION