


C. S. File No. 3/28

$\Delta 10$	94				
16 <sup>2</sup> 500	4.81	5.75			
$\Delta 9$	0				
22 <sup>2</sup> 290	2.689	2.69			
$\Delta 8$					
1 <sup>2</sup> 212	2.016	2.02		N	
$\Delta 7$					
	.44		100-38	North	
SW Gr					
	.52	9 <sup>2</sup> 38		S 80 W	577-16 W
$\Delta 6$					
14 <sup>2</sup> 132	1.28	POT		<del>S 80 W</del>	
$\Delta 5$		3.39			
23 <sup>2</sup> 230	2.11		2 <sup>0</sup> -52'	Walt	386-54 W
$\Delta 4$					
9 212	2.69		0-33'	S 86 W	S 84-02 W
$\Delta 3$					
10 107	4.01	2 <sup>0</sup> -31		S 86 W	S 83-29 W
$\Delta 2$					
5 <sup>2</sup> 135	1.85		87-54	S 86 W	S 86 W
SE Gr					
20-5 <sup>2</sup> 7-5	500	727			
12-5 <sup>2</sup> 7-5	372	4.698-20			
5-5 <sup>2</sup> 12-5	482	4.891-12			
2-5		4.891-12			
6-5		5.000-0			
$\Delta 1$		4.963-7			
		4.973-4			
		4.993-3			
		4.997			
200 <sup>2</sup> 200	13.44			S 2 <sup>0</sup> E	
5 <sup>2</sup> 200					
5 <sup>2</sup> 300					
5 <sup>2</sup> 300					
1/4 10					
1/5					

12.36

  
 SF 3-41K  
 STA. CUB  
 579-22W

M 89-08 S

M 86-08 W

M 85-35 W

M 88-06 W

  
 50°-10W

SW

29.45

10

CS 70

NEC<sub>m</sub>

15.45<sup>00</sup>  
5

128<sup>3</sup>  
484

6.12

Δ14

6.20<sup>00</sup>  
226<sup>4</sup>

2.27

Δ13

1.748

Δ12

14<sup>59</sup>  
2

2.51

90°

Ent

NWA

6.82

Δ11

2260

Δ10

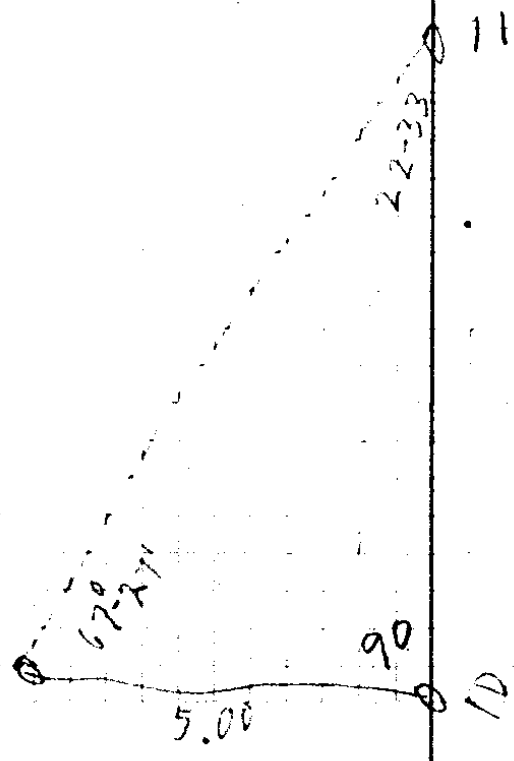
12.045

A, B, Hat full  
H. N. ~~Brub~~

22 miles

H. L. Eppstein  
W. S. Crear

N.E. corner 2, 35  
back from  
A 1



CS 7/2

3-20 Nov 14/25 W.H. Wood - C.S. Clear  
A.B. Hatfield - L.S. Patterson

SURVEY OF W. 60A OF N.W. 1/4 Sec 15-285-SW

1/4 cor 15-16

AT 1/4 cor to 15-16 find the B.T. in place and renew corner by setting a dry white oak stake 6"x6"x2'6" scribed 1/4 S 15-16 C.S. corner bearing trees set

Corner to 9-10-15-16

thence I run north on a random line 40.06 to locate the corner to

15-16-9-10 I find stump with some but some rotten out bears N 56 1/4 W 5.70

and an oak S 40 3/4 E 4.00 ch

" " S 30 1/2 E 1.90 ch (provisional 4.90)

I set corner accordingly as the distance of 4.90 is probably error

Marked a B.T. N 69° 30' W 51 L  
an oak 12" dbh  
B.T. 59 C.S.

a white oak stake  
4x4x2'6" scribed  
S-9-10-15-16  
C.S.

thence I run East on random line 15.00 T.P. - correct 36 L South-

40.19 + S 96 to reestablished 1/4 cor

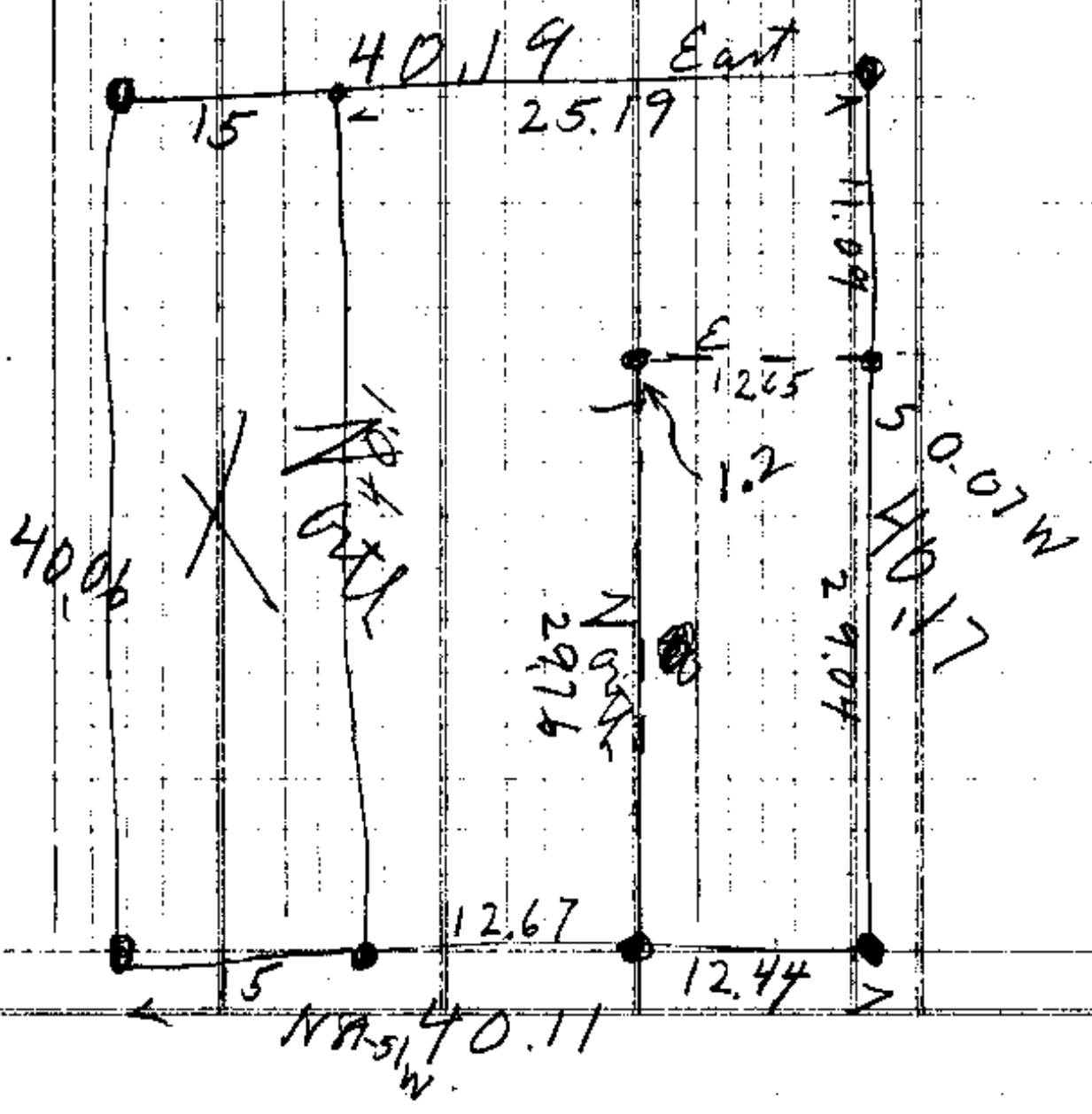
1/4 cor to 10-15

at 1/4 cor to 15-10 find the B.T. in good shape + reset corner by setting a 4x4x2'6" dry white oak stake 1/4 S-10-15-C.S.



C.S. No. 3/28

2/2/30





CS FILE FOLDER

CONTAINS

MORE

INFORMATION