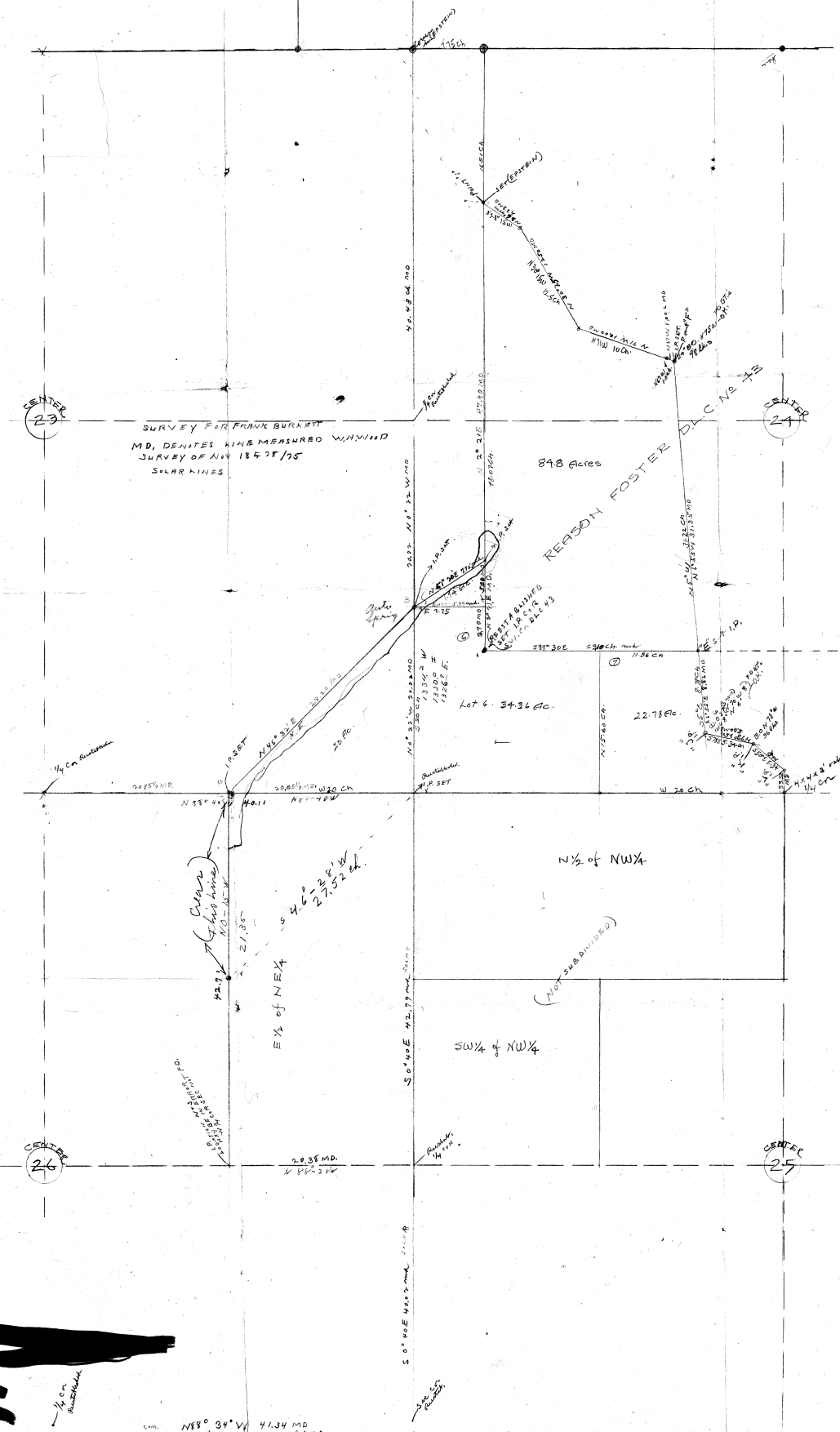


T 26 S R 4 W



SURVEY FOR FRANK BURKETT
 MD, DENITES 4146 MASHARD WIND
 SURVEY OF NOV 1847/75
 SUNAR LINES

89.8 Acres

REASON FOSTER D.C. No. 42

Lot 6 - 34.34 ac.

5/8 of NW 1/4
 27.52 ac.

22.78 ac.

22.78 ac.

CENTER 23

CENTER 24

CENTER 26

CENTER 25

N 88° 30' W 41.34 MD



Sta	DIST	LA	RA	Mag
$\Delta 24$				
-16 92°	884 ✓		41-06	N89-55W S89-55 N87W
$\Delta 23$				
5-20 153°	152.9 ✓	9-10		S48-29W S50W
$\Delta 22$				
12-30 149°	146.2 ✓	26°-30		S58-09W S61W
$\Delta 21$				
30-20 187°	161.4 ✓	6°-37		S84-22W S89W
$\Delta 20$				
37° 300	+28 239.6 ✓	9°-28		N88-41W N86W
$\Delta 19$				
-36° 233°	188.8 ✓		10°-17	N79-16W N77W
$\Delta 18-57E$				
	36° ✓		7°-36	N89-33W N86W
$\Delta 17-56W$				
+15° 68°	65.8 ✓	8°-57		S82-51W S84-30W
$\Delta 16$				
+30° 300 30° 52°	327.5 ✓		18°-10'	N88-12W N87-30W
$\Delta 15$				
+15° 71°	88.4 ✓	24°-28'		S73-28W S75W
$\Delta 14$				
+2°-39 167°	158.8 ✓		8°-09'	N81-54W N8 N81W
$\Delta 13-52E$				
14-30 83°	80.3 ✓	56°-49		S89-57W N81-30W
L cor				
4				N N33-14W

as 7/30

Sta Dist Azimuth Azimuth Mag

con
sic

442' 9°-41'

587' 07W S 86 W

Δ 28
-2-295'

2948' 10-04

15-01 N 83 1/2 W N 84 W

Δ 27-

+16 196-5

1882

10-01 N 82-1/2 W N 84 W

Δ 26-65

-10-30 195'

1822

3°-47' 587-51W S 86 W

Δ 25 = 64'

-30-16 2540

2194' 6°-01'

587-07W S 85-30 W

Δ 24

587-51W

CS
8/20

Sum

26/23
25/24

o Δ p

Time Oct 28-26

Time = 11-46-45^N am

Hor = 98° 49"

Ver = 33° 23"

α

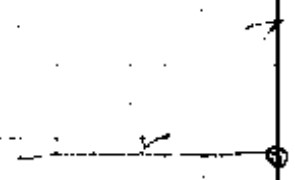
11-48-30^N am

Hor = 97° 45"

Ver = 33-56

Needle = 51° 30 C

Sta	Dist	Angle Left	Angle Right	Mag.
$\Delta 12$ 616 92°	91.6 ✓	30-11		N5-22W N4W
$\Delta 11$ 8°-11' 255°	253.1 ✓	0°-05'		N2-11W N1W
$\Delta 10$	252°	3°-22'		N2-06W N1W
$\Delta 9-8I$ 10-26 241°	237.3 ✓		1°-22'	N1-16E N2°-30E
$\Delta 8-7I$ 119°-02' 788	272.2 ✓	3-45°	3°-45' 7	N0°-06W N1E
$\Delta 7$ 7°	104.1 ✓		10°-41'	N3°-39E N4E
$\Delta 6$ 22°-18' 1052	68.8 ✓	6°-36'		N7-02W N6°-30W
$\Delta 5$ 4° 139°	138.7 ✓	0-41'		N0-26W N0-15E
$\Delta 4$ 17°-40' 217°	215.4 ✓		0-50'	N0°-15E N1-30E
$\Delta 3I$ 15-30 271°	269.7 ✓	0°-26'		N0°-35W
$\Delta 2I$ 13°-10' 291°	283.5 ✓		0-08'	N0-09W N0-30E
$\Delta 1I$ 1°-30' 300° 54°	351.9 ✓		90°-29'	N0°-17W N1°E



CS 5/20

Sta	DIST	LA	RA	1st Az	2nd Az
30-25 300° 25	299.5 ✓		5-58	N 26.32W	N 25W
30-22 300° 22	299.9 ✓	50-06		N 32.30W	N 31W
12-32 261° 22	145 260.7 ✓	29-38		N 17.36E	N 20E
24-15 300° 22	273.5 ✓		48-45R	N 47.14E	N 48E
26-30 300° 21	356.3 ✓		45-28	N 1.31W	N 1°W
20-W 42°		53°-09		N 46.89W	N 45W
50-42 297° 19	295.5 ✓		7°-12	N 6-10E	N 6-30E
3°-30 231° 18	230.8 ✓		39°-49'	N 1-02W	N 0-30E
17	167.2 ✓	59-49		N 40-51W	N 39-30W
11° 298° 16	292.5 ✓		12°-16	N 18-58E	N 20E
32-38 300° 15	253.0 ✓		38°-25	N 6-42E	N 7E
19° 11° 14 1/4 Cov.	67.2 ✓	52°-02'		N 31-43W	N 31W
19°-10 172° 13	72.9 ✓		25-41	N 20-19E	N 21E
12					N 21E

es 3/20

$\Delta 10 A$

42³ 73°-37'

574-59E 573-20E

$\Delta 9 A = 40E$

0-40' 163²

163.6^v 1°-4.2

51°-22E 51°E

$\Delta 8 A$

5-15' 300²

35E
298.7^v 44°-35'

50-20W 51° W

1-40' 300²
500² 1-32'

177E
599.7^v

0-06 544-55W 545-30W

$\Delta 7$

1°-08' 300²

+57E
297.7^v

0°-06' 544-49W 545 W

$\Delta 6 = I 93$

2-20' 211²

211.4^v 0-53'

544-40W 545 W'

$\Delta 5$

3² 296²
on plane
 $\Delta 4 = W$

+2.5
295.6^v

3°-26 545-36W 546-30W

8°-08' 1012

101.7^v 5°-18'

542-30W 542-30W

$\Delta 3$

-3°-00' 113²

112.8^v 10-11

547-28W 548-W

1/6 m E
500

0-30' 174²

174.4^v 4°-02'

548-39W 548-15W

$\Delta 2$

24-30' 268²

267.5^v

3°-14' 552-41W 554W

$\Delta 1 = 2V$

91.8 12-47

549-37W 549 W

Over land
2/12

562-14W



es 9/20

		A	RA		
Δ 22A	168 ⁷		0°-16'	N46-30E	N46-30E
Δ 21A 3°-30' 190°	190.3		38°-45'	N46-4E	N46-30E
Δ 20A	55 ¹	39°-18'		N7-21E	N8°E
Δ 19A	16.7		44°-42'	N46-4E	N47°E
Δ 18A	112 ⁷	6°-54'		N2-05E	N2°-30E
Δ 17A	77 ³		9°-40'	N8-51E	N9°-30E
Δ 16A	33 ⁵	5°-11'		N0-41W	North
Δ 15A	93 ⁶	6°-19'		N4-30E	N5°E
Δ 14A	49 ⁵	72°-53'		N10-44E	N11-15E
Δ 13A	11 ¹		72-26	N13-42E	N84E
Δ 12A	103 ⁴	93-46		N16-6E	N11-5°
Δ 11A = 38I	61.5		0-01'	S71-50E	S 85-30E
Δ 10A = 39I					

21A Beginning Rails
 1.5 High 5 Rail in tree
 Rail rotten some brush
 20A to 21A Rail down
 No fence in trees

21A + 7.8 to Sta 22A
 some brush & rail down
 - 21A + 38 End Rails

21A 21A + 38 to 21A + 98 No fence

20A to 20A + 30
 Rail down 20A + 30
 to 20A + 100 Rail Rotten Brush
 20A Edge Pilewood
 Ground also Timbered

From 19A to 20A 5 Rail

From 18A to 19A
 5 Rail 3 to 10

19A Trail

44° 54'

36° E 54.7° W 180° 1/2 Rail

18A Back 26 New Fence

16A + 30 End of Rail in place
 and pile up From the 17A down to 17A + 30
 down in place layer From offset to 3' high

From 15-16A Fence
 3' high 5K mile

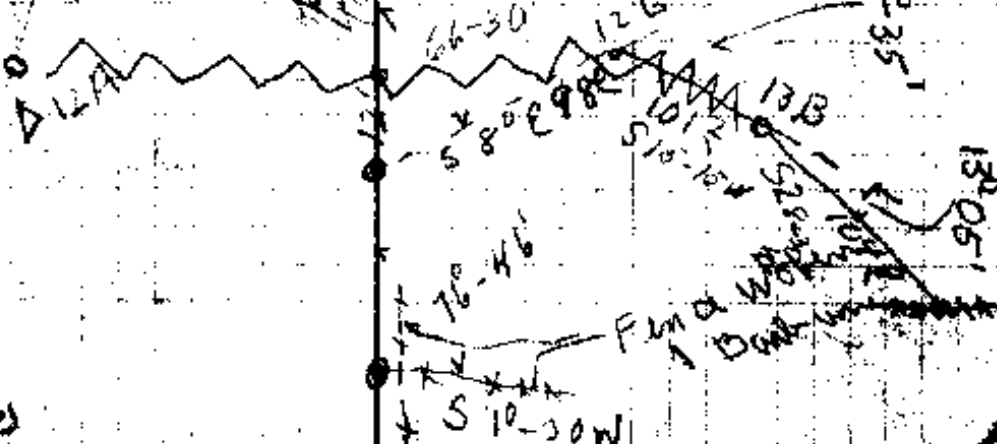
From 14A to 15A
 5 & 6 Rails 2 1/2 High 13A

Rail 1/2 High
 13A to 14A 1 1/2 to 3 High
 11A + 15 PTRails

2 High down
 Rotten to 11A + 80 2' High

PT of Worm Fence 10 Rail
 High 3' Rail Rotten & Broken

61-91
 213-37
 N 2130 W



as for

		AL		
34 A	546		7°-25'	N44-05E N45E
33 A	5 N line			
	110 ²	2°-40'		N36-10E N38E
32 A				
	99°	0-41'		N34-20E N40-30E
31 A				
	104°		3°-10'	N40-01E N41-30E
30 A				
	88 ^L	2°-43'		N36-51E N38-30E
29 A				
	96 ⁹	46-47		N34-34E N41E
28 A				
	22°		46°-35'	N46-01E N87-30E
27 A	on line			
	141 ^Z		7°-47'	N34-16E N41E
26 A	5 No. Fence Line			
	122 ⁹	7°-57'		N34-59E N33-30E
25 A				
	218 ²	7°-04'		N34-56E N41E
24 A				
	156 ²		5°-58'	N41-00E N48E
23 A				
	153 ⁴	5°-28'		N41-02E N42-30E
22 A				

13-30
176
18-30 176°

Δ44A

166.9
171.1

5°-36

S80-23E S79E

70.5

11-22

S74-47E S73-30E

Δ43A

-20° 189°

177.9

5°-50

S86-09E

Δ42A

-18° 140°

183.1

80-33

N88-01E N89-30E

41A

80.5

20°-14'

N7-28E N9°E

40A

127.3

21°-25

N12-46W N11°-30V

39A

91.5

34°-04

N8-39E N10°E

38A

67.2

0-41'

N42-43E N43-30E

37A

281.7

19-46

N44-24E N44-30E

36A

52.0

6°-38

N68-10E N65E

35A

197.0

12°-27

N66-32E N55E

34A

43A End Rail Fence
Beg brush

42A to 43A Rail
Fence in place 4 to 1' H.
Wire cut in tree

25 I
N 33° 15' W
19°-20' Cor

Tree wide cut
41
17°-30' Right
41A to 42A
Rail Fence
Fence 1 to 4' High
down at 42A

41A corner Rail Fence
Turn down Hill
40A to 41A Rail
in place 1"-3" High

24 I
N 30° 00' W
55°-50' Cor
117-49

40A to 41A Rail
down

Rail down from
39A to 40A.

27 I
N 30° 00' W
23°-04' Cor
117-49

37A to 38A Rail in
place 4 to 1' high

38A to 39A Rail mostly
down on ground.

26 I
N 30° 00' W
11°-15' Cor
117-49

35A Rail scattered
on line
35A to 36A Rail in
place to 36A 1' to 4' high

35A to 35A+25
Rail in place
Rail down to 36A

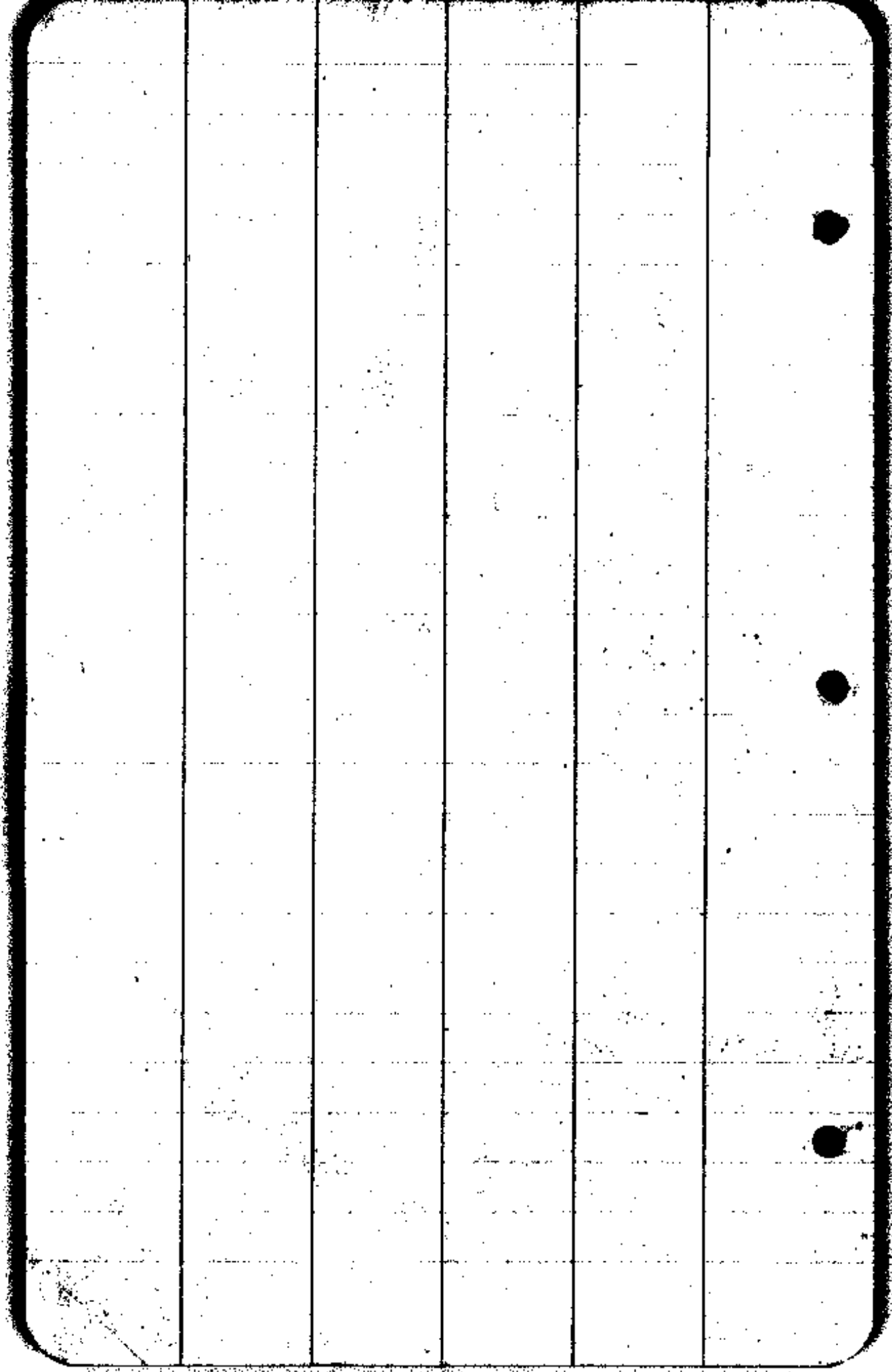
28 I
N 28° 30' W
49°-20' Cor
117-49

34A to 34A+83 Rail
Fence from 2 to 5' High
34A+83

34A+83 to 34A+100
Rail Fence down

34A+100 to 35A
Rail in place 2' High

CS 3/00



See Cov

N 0.0

W 0.0

See Cov

N 19.9

W 1990.9

See Cov

N 33.9

W 2647.8

See Cov.

S 89.0

~~W 15240.4~~

445

329

78.4

222

139

36.1

2 2620.2

1310.4

CS 70

2590.0
Δ13 61.5
Δ12 521.5

2088.5
Δ11 181.5

1887.0
Δ10 203.4

1683.6
Δ9 297.2

Δ8

1386.4
Δ7 498.8

Δ6

847.6
Δ5 297.2

Δ4

off set 10 North to here
195.0

Δ3

220.4

Δ2

off set 10 south

Δ1

175.0

1/4 cm 13
24

389-301

2590; 2088.5; 61.5; X

51.15
2088.5 - 4
61.5 - 2

10392.5
2088.5

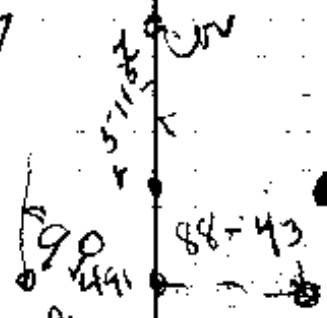
124210

2590 | 12782.75 | 99.8
10360
23722
23310
4027

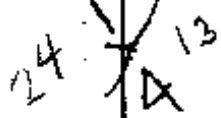
10/41 W
49.3" N

359
243-32
116=28

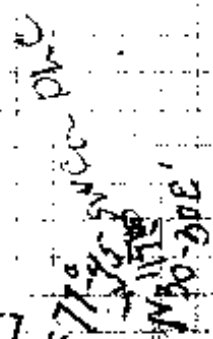
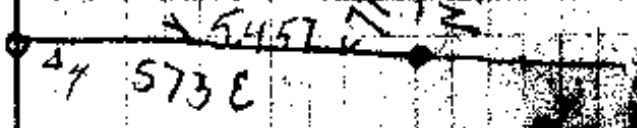
RF 14"
W 43
W 4.8 feet
N 48-30E

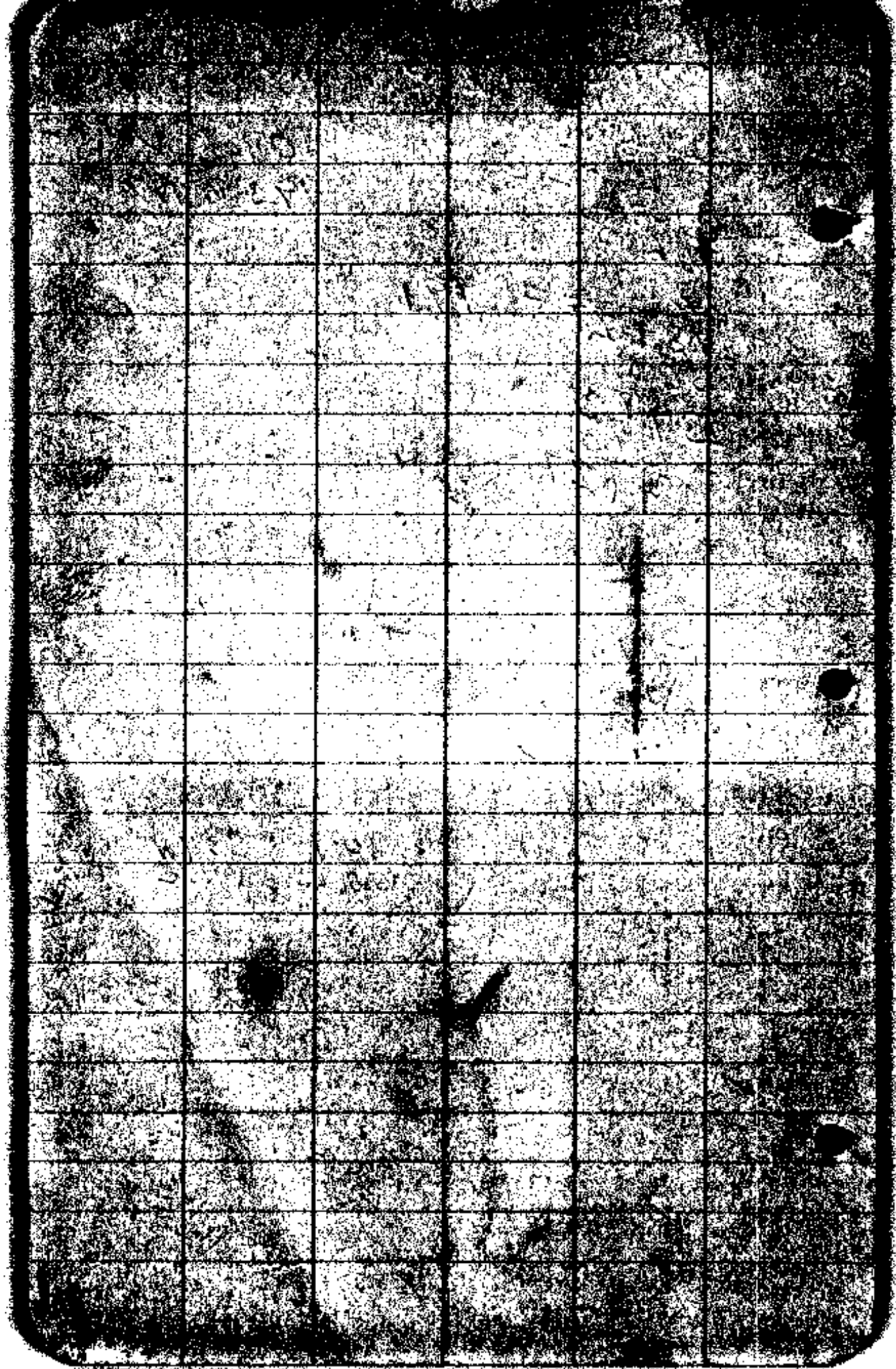


W.O. 10" S34W 814
W.O. 12 N42E 145611



24 Fin Br South 2961K





WYWOOD CREEK
FOR FRANK BURKETT

O.C. 12112 - R.L. 1151
18-19-20-21
22-24 25-26

S at 2 1/2

Ermine down

1 P.M. 9.71 - 33.37

out

33.37
9.71
23.66
6.66
30.00
30.00

5 - 7.3

12.14

2 P.M. out

5 - 40.7
2 - 33.4
6 - 74.1

out

3 P.M.

out

Ermine down

out

17 - 57 - 04.8

5 - 07.3

17 - 57 - 12.0

1 - 53

17 - 56 - 19.0

17 - 57 - 04.8

5 - 07.3

17 - 57 - 12.0

2 - 16

17 - 57 - 21.5

17 - 57 - 04.8

6 - 14.1

17 - 57 - 18.9

2 - 37

17 - 58 - 40.6

20 - 05 - 14.0

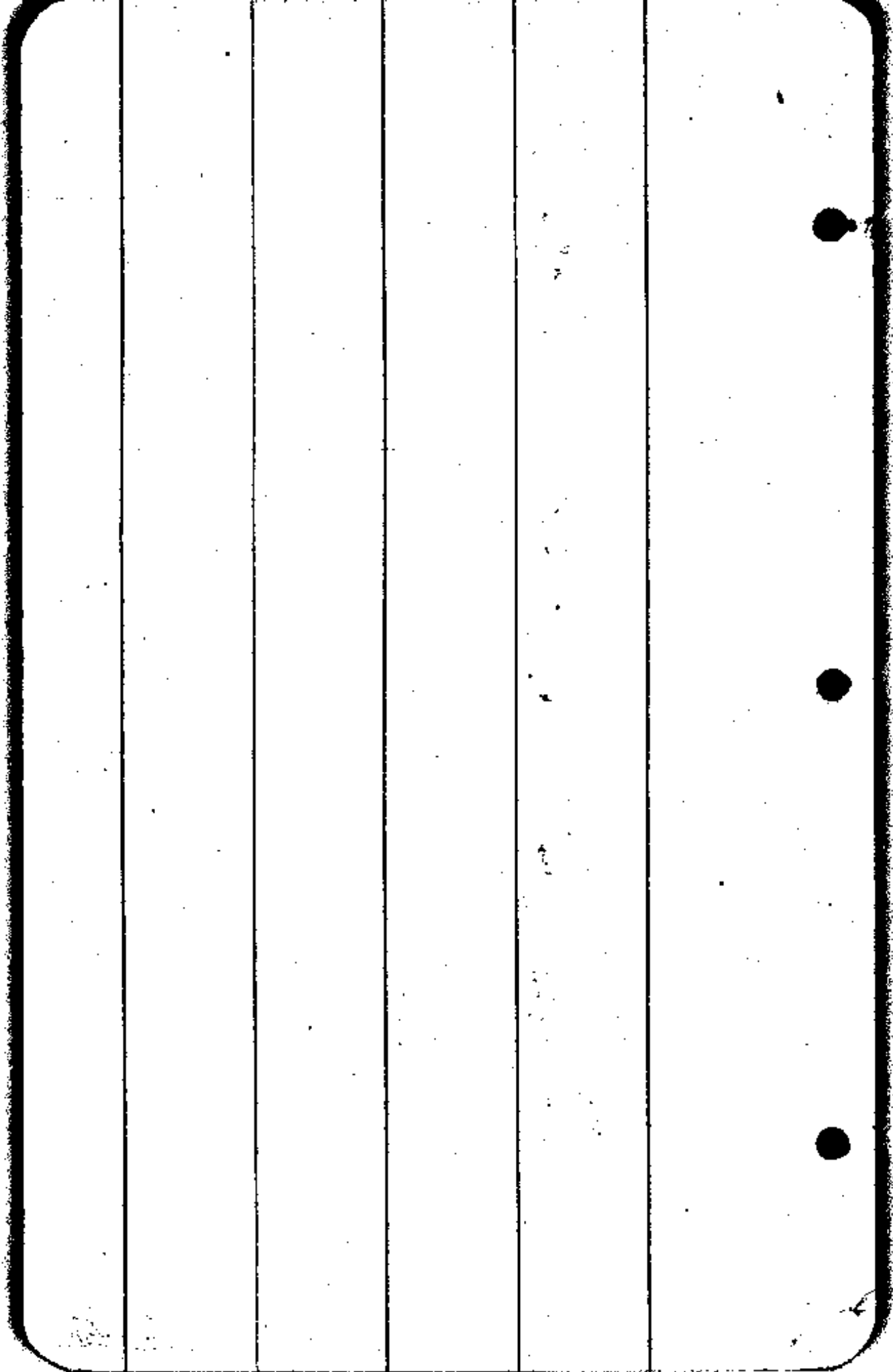
5 - 21

20 - 05 - 24.0

3 - 16

20 - 05 - 18

CS 3/20



Burkett.

9-20

OS 9/20

Area	Ver	Dist	Height	Height	Notes
			Left	Right	
7-9	6-75	74	1.15	56-44'	N 87-58W
Δ 12-53I					N 87-58W
13-06	300-12	294	4.56	0-30	N 87-58W
Δ 11-52I					
20-16	300-16	490	6.65	0-14'	587-21W
Δ 10-51I					West
12-17	193	179.4	2.78	38-43'	589-18W
Δ 9					West
11-14	111	109.6	1.69	45-40	550-35W
Δ 8					551-20W
12-04	200		4.63	0-35	N 83-45W
Δ 7					West
11-30	215	271.5	4.15	6-05'	N 81-20W
2-05	Δ-6-87				N 84W
2-06	299	299.1	4.585	40-01'	588-35W
Δ 5-48I					West
13-12	105	105.5	1.62	7-44'	585-34W
Δ 4-47W					586W
23-04	1279	1279	2.02	50-33'	N 86-42W
Δ 3-46I					N 86W
22-51	130	1179	1.88	1-30'	587-45W
Δ 2					588-30W
20-31	166	156.1	2.45	0-01'	589-15W
Δ 1-W					West
25-24	255		3.81		599-11W
25-26					West

Frank Buckholt

at hand	9 1/2 days	95 ⁰⁰
cream	9 1/2 "	38 ⁰⁰
at the		4 ⁰⁰
Recording		2 ⁵⁰
Car mileage		20 ⁰⁰
		<hr/>
		159.50

as 3/20

Survey for Frank Burkett
 in Secs 23-24-26 - Tap 2 CSR 4 W
 (Part of Ranch in sec 25 not surveyed)

W H WOOD - Surveyor
 Clear + O, G, King chain

A. L. Casiker + Casiker assts.

Nov 18 to 28 inclusive

Lines run from solar observations
 But solar attachment

Act 43-10 P

Act 173-10

11 a.m.

Nov 18

Sec 24

Act 7, 21 1/2 x 36.07 =

19-10-258

4-197

19-14-456

2-00

Ref

11 a.m. Sec =

19-12-45

Friday Nov 27

Sec 24

21-05-743

2 P.M. = 10, 21 1/2 x 27.65 =

4-423

21-16-066

Ref =

2 10

Sec =

21-07-566

Nov 18/25

(1)

SE DISCHS
AT

S.E. cor D.L.C. 43 found old
Trachyte noted out also B.T.
B. Oaks S83 W 13 L & renew
Corner by setting 1.P. 1/2" x 2" x 2 ft
in ground

North 0° 30' W 47.70 + 232 ft to

N.W. cor "BURNETT" set by "F. STRAIN"
Return to SW cor and then

N 2° 21' E 3.70 "C" set 1.P.

" 8.70 "D" set 1.P.

" 47.90 "E" set 1.P. (as set by Efferton)

Revised sketch

on E
23-24-25-26

Found old cor S.W. cor 43 ft from old
also note that set by previous survey

Set 1.P. 3/8" x 2" for sec cor

B.T. N 8° W 152 18" P

A - S 59° 30' E 32 18" W

Set B.T. N 72° E 200 18" P E 172 50" P

Trace N 0° W 20.00 T, P.

40.00 T, P.

found at trace of 1/4 cor on B.T.'s

23-24-

North 80.89 + 53 W to cor T
Set B by E position
CS 200

I return to cor to 23-24-25-26
and run $N 0^{\circ} 22' W$

1/4 cor to side 23+24

20.77 set I.P. cor 1/4 (S 20 L stulp)

40.43 Set 1/4 cor proportional measure
on line between section corners
No trace of original cor, or bearing trees
Bearing trees
Marked
A Fir 17" $N 72^{\circ} W$ 26 L south (1/4 S 23 C.S.)
" " 15" $N 90^{\circ} 45' E$ 20 L " (1/4 S 24 C.S.)
Set FIR stake 3x3x3' south 1/4 S.

80.97 to sec cor to 23-24-

From corner to 23-24-25-26
as reestablished &
run West 20 TP

40.11 + 98 N &
find B.T. Fir $N 79^{\circ} E$ 1.10 L
Therefore I retrace line and
run from cor to 23-24-25-26
 $N 89^{\circ} 40' W$

20.05 1/2 set 1/4 cor I.P.

1/4 cor sec 23+24

40.11 set 1/4 cor to side 23 & 26
old B.T. Fir 30" bearing $N 79^{\circ} E$ 1.10 L
over " " 8" " S 75 W 77 L
south (1/4 S 26 1st C.S.)
Set I.P. for 1/4 cor
CS 260

Then from corner 73-74-25-26
I run South

42,79 where 54 Lha east
find stumps of old B.T. 2

82,81 + 108 Lha east
Find 2 B.T. 2 OK

I therefore retrace and from
corner 73-74-25-26
I run S 0° 40' E

42,79 Reestablish 1/4 cor

when Fir stump 48" Base N 97 E 25L
" " 40" " N 75 W 25L

Set W. oak stake 4" x 4" x 3'

Center 1/4 S and mark over

B.T. 2 as follows

6" FIR N 75 W 41 L (1/4 S, B.T., CS)

17" " S 75 E (is marked by some
previous survey)

S 0° 40' E

87,81 Reestablish corner 25-26-35-36

Set W oak stake 4" x 4" x 3 ft

mark S 25-26-35-36

old B.T. found 24" Base N 75 W 21 L

" " 18" " N 97 E 25 L

I mark over B.T. 2

R. Fir. 15" S 48 E 23 L (B.T., 34 C.S.)

" 12 S 31 W 42 L (B.T., 35 C.S.)

CS 2/20

1/4 corner 73-74-25-26

See corner 25-26-35-36

1/4 cr TF Sec
35 + 26

Thence from cr TF 25-26-35-36
as reestablished & run

N 88° 34' W 41.34 FT
where reestablish 1/4 cr
here find B.T. a block oak
bearing N 47° E 74 L and stump
of B oak bearing 80 W 7 L
I reestablish corner by setting
a cedar post 4x4" x 3 ft
marked 1/4 S - 26 - 35

" B.T. W oak 12" S 88 W 7 L
(B.T. S 35 - C.S)

From the 1/4 corner TF Secs
25 + 26 previously reestablished
& run N 88° 38' W

20.38 and set I.P. 1/12 cr (This
corner may be out of place
north or south as I run line
west to west line of sec 26 but
fd no trace of 1/4 cr and as
owner denied expense to rent did not
relocate)

Thence N 0° 15' W 42.71 FT

1/6 cr previously set at 20.05 1/2 N 88°
40' W of center 23-24-25-26

W 1/6 cr

(5)

Thence from said $\frac{1}{16}$ cr (Point A)
N $88^{\circ} 40' 14''$ W 20.05 $\frac{1}{2}$ from the
Corner to Secs 23-24-25-26
I run N $45^{\circ} 32' E$ 28.20
to (Point B) the $\frac{1}{16}$ corner previously
located N $0^{\circ} 22' W$ 20.22 from
the Corner to Secs 23-24-25-26

Thence from $\frac{1}{16}$ cr (Point B)
I run due east (solar)
5.99 to a (Point C) on the
West line of D, L, C, 43
Said point being N $20^{\circ} 21' E$
3.70 from the S.W. Corner
to said D, L, C, 43 as reestablished

Thence I run from (Point
C) N $20^{\circ} 21' E$ 5.00 ch to
(Point D) on the West line of said
D, L, C, 43 + 8.70 north of
the S.W. Corner then to

Thence I return to Point
B and run N $51^{\circ} 20' E$
~~38~~ 40 E
7.95 to (Point D)

CS 3/20

(6)

The S.W. Corner of D.L.C. 43
 I reestablished by setting iron pin
 where stake corner has rotted out
 find B.T. B only 385 W 19 L
 Set I.P. C as spring for corner

Thence I run N 0° 30' W which
 from (Abstract description) I take to
 be proper corner. and at

47.90 + 2.41 east I

intersect corner to Frank
 Burkett lands on West line
 of D.L.C. 43 (this corner set
 by Epstein several days
 previous to my survey and used
 as found) I retrace line
 from S.W. corner D.L.C. 43

I run North 20° 21' E.

3.70 intersect (Point C)

8.70 " (Point D)

47.90 To N.W. cor Burkett (Point V)
 as established by Epstein

CS 260

Thence from S.W. cor
 D.L.C. H3 as reestablished
 I run S 89° 30' E 23.10 (S 1/4)
 (as per abstract description)
 Set iron pin at (Point E)

Thence I run W 5° 10' W 12.00
 " offset 90° W 654
 " N 70° 20' W 10.00
 " N 50° 00' W 9.35

To a point 14 L out of
 (Point F) Here find
 bearing to a B. oak 24"
 (in road) bearing 75 W 98 L
 Here Reestablish this point (F)
 Set I.P. Sun barrel

Retrace this line and find
 it to bear N 60° 55' W 31.35.

Thence from (Point E) I run
 " N 67° W 1.00 to (F)
 " N 71° W 10.00 " (G)
 " N 30° 15' W 12.50 " (H)
 " N 26° 42' W 2.33 to (I)

(the N.W. corner of
 Breakfast house
 given in description as
 N 28° 15' W — ft

CS 7/20

Thence I return to
 point (E) and run
 S50°W 8.78 and at a
 point S80°30'E 38 links
 I locate point "J" there
 find white oak 8" North 9 L and
 " " " 12" S 70°W 12 L
 (extension N 70°W)

I retrace and from Point (E)
 I run S6°55'E 8.8 L to Point (J)

1/4 cor 24-25 ✓

at the 1/4 corner to
 Secs 24-25 I find
 B.T. B on N 89°E 120 O.K.
 stump S 70 L also old stake
 set 4x4x2' w oak stake marked
 1/4 S - 24 - 25
 Mark B.T. 15" Fir S 73°10' W 34 L
 (BT 1/4 S 25 C.S.)

Thence from above 1/4 cor
 I run due north 3.52 to
 point "L"

(9)

Thence from point "L"
D run N 50 W 5.34 to point "K"

Thence from point "K"
N 78° W to a point 42 miles
south of point "J"

Distance and Run from
Point K

N 93° 25' W 5.00 to
Point "J"

CS 3/20

CS FILE FOLDER

CONTAINS

MORE

INFORMATION