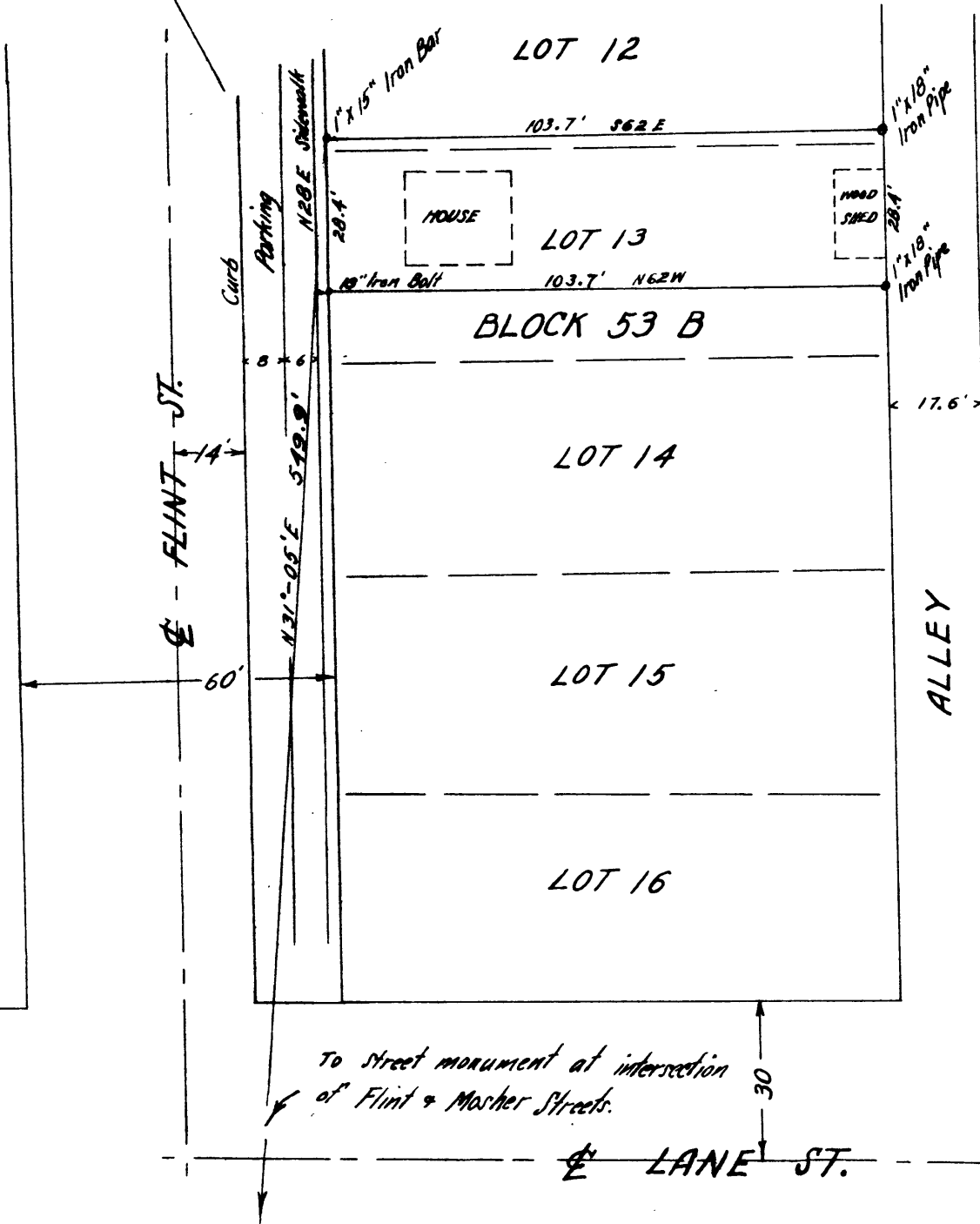


MAP
 SHOWING LOT & HOUSE
 IN
 BLOCK 53 B, ROSEBURG

H.L. EPPSTEIN, COUNTY SURVEYOR

DECEMBER 20, 1934

SCALE 1" = 30'



To street monument at intersection
 of Flint & Mosher Streets.

CS FILE FOLDER

CONTAINS

MORE

INFORMATION