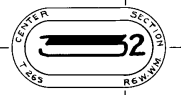


NORTH UMPQUA RIVER

27.46 ACRES

62.89 ACRES

75.64 ACRES



NORTH

MAP OF
N. CURRY ESTATE
SEC 32 T 265 R 6W W 1

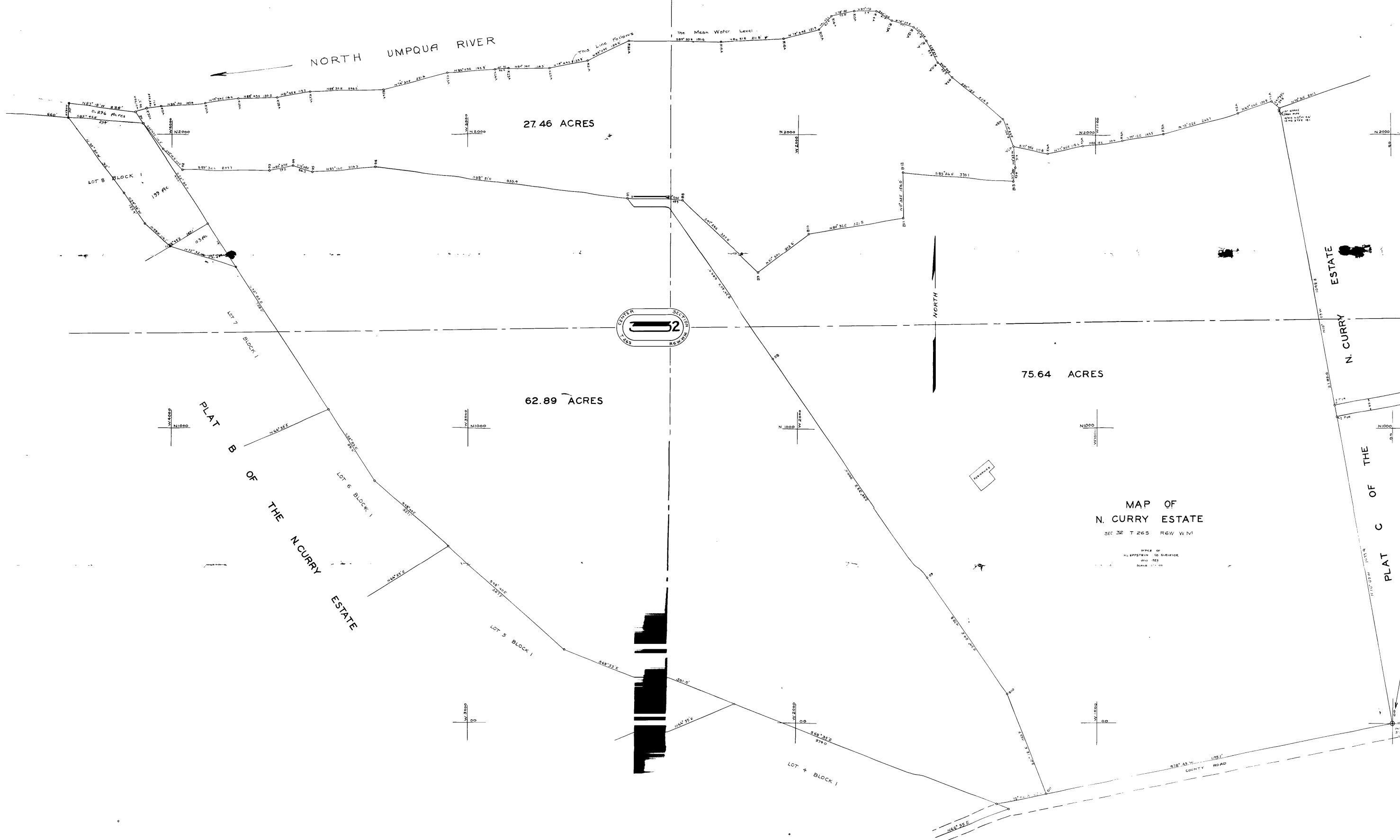
OFFICE OF
H. H. POSTHUM CO. SURVEYORS
AND
ENGINEERS
BANK 111-113

ESTATE

N. CURRY

PLAT C OF THE

ESTATE



CS FILE FOLDER

CONTAINS

MORE

INFORMATION