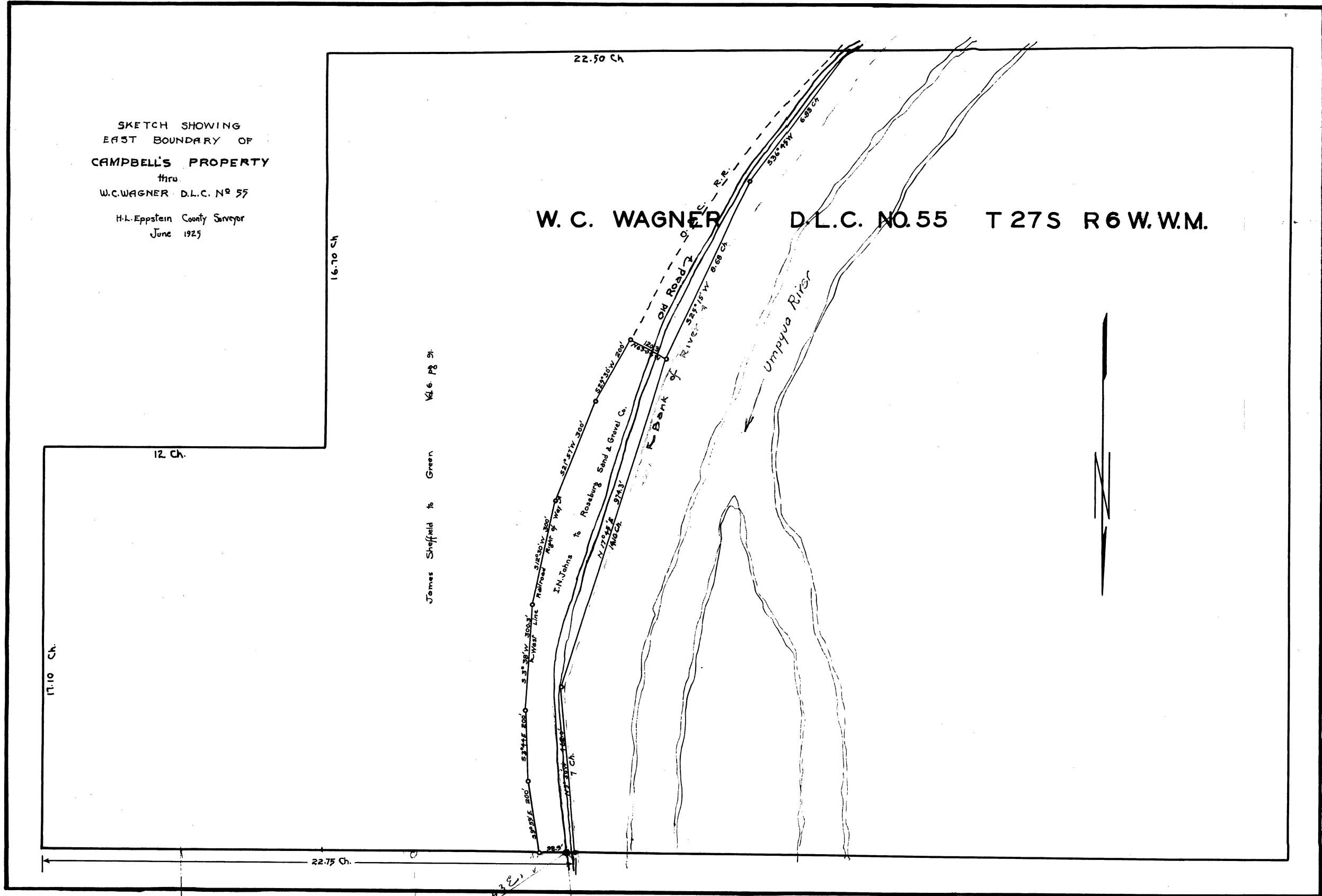


SKETCH SHOWING  
 EAST BOUNDARY OF  
 CAMPBELL'S PROPERTY  
 thru  
 W.C. WAGNER D.L.C. NO 55  
 H.L. Eppstein County Surveyor  
 June 1925

W. C. WAGNER D.L.C. NO. 55 T 27S R 6 W. W.M.



CS FILE FOLDER

CONTAINS

MORE

INFORMATION