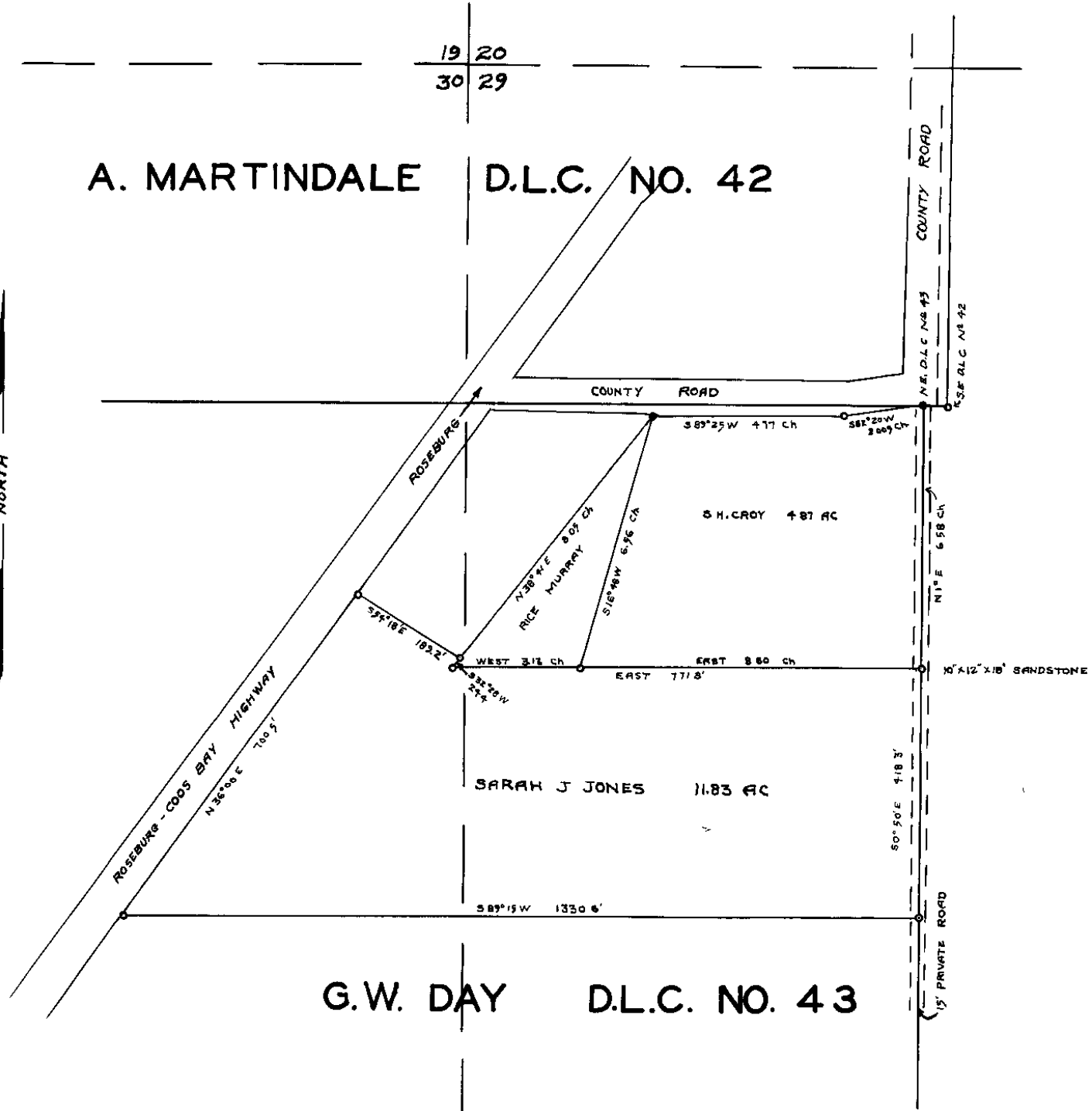


19 20
30 29

A. MARTINDALE

D.L.C. NO. 42

NORTH



G.W. DAY

D.L.C. NO. 43

SKETCH SHOWING
LAND OF SARAH J. JONES

AS ENCLOSED BY FENCE

SEC 29-30 T29S R8W W.M.

OFFICE OF
H.L. EPPSTEIN COUNTY SURVEYOR
JULY 1925

SCALE 1" = 3 CH

CS FILE FOLDER

CONTAINS

MORE

INFORMATION