

COUNTY SURVEYOR'S RECORD, DOUGLAS COUNTY, OREGON

BUSHONG & CO. PORTLAND, ORE. 87545

Survey No. 2-39 Made on May 19, 1925

In Town. 26 Range 6 Sec. 8

Made for Winniford and Soloman

Purpose of Deed description of tract.

Survey No. 2-39 Made on June 5, 1925

In Town. 27 Range 5 Sec. 36

Made for Karcher

Purpose of Deed description.

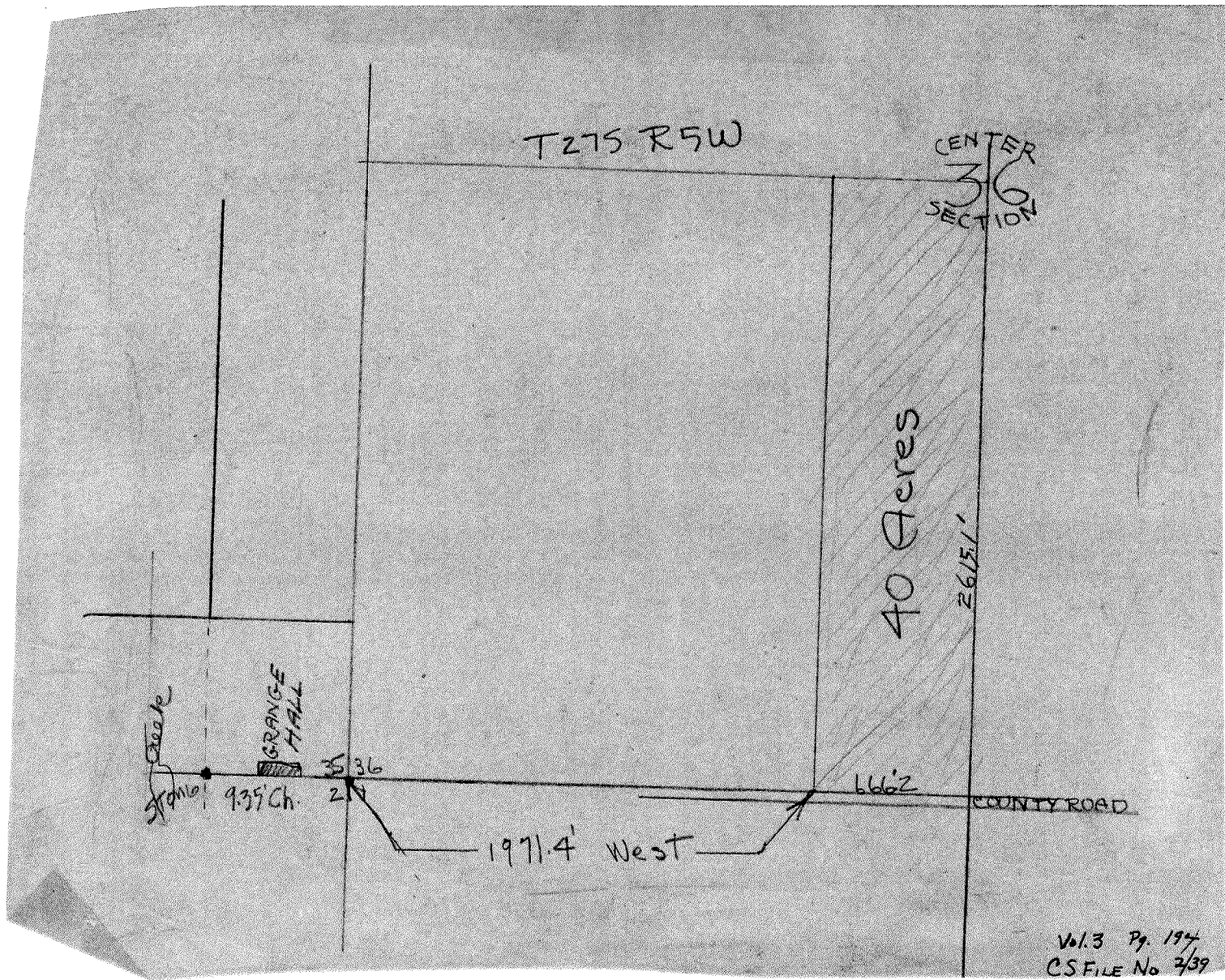
F.N. "LW"

TRACING IN FILE 2/39

I began at the 1/4 corner in the center of the county road and thence ran to a corner of the property to be described and thence around the tract. I made a deed description of the tract and calculated the acreage. All field notes and calculations are in Env. 37 Vault 2.

I ran around the tract, using the East fence line for the center line thru Sec. 36, the same being accepted as the division line between the properties, and using the north and south fence lines laid off a tract containing 40 acres, tied the same to a government corner and made a deed description covering the same.

The attached map shows the tract covered. Field notes and calculations are in Vault 2, ~~page~~ env. 38 39



CS FILE FOLDER

CONTAINS

MORE

INFORMATION