

311.6

293.5  
35.5

40.0  
230.0

911.5  
176.0  
89

1176.5  
86.2  
1262.7  
61.0  
1323.7

2-19

17.0  
147.6  
130.6  
23.0

200  
252.2  
52.2

15.6  
57  
72.6

1324.7  
126.3  
6.3

147  
24  
48

40.2  
3950.2  
1324.8  
1176.3  
147.5

Geo Mc Hugill T 255 R 6 W

Go To Sec Cor 33-34-3-4

Get from 1 O.B.T. others Down

Set 1 1/4" I.P for Cor Marked as 12'

Fir N 14° E 16<sup>8</sup> ft

16" Fir N 16° W 9<sup>2</sup> ft

36" Fir S 37° E 136<sup>2</sup> ft

4' Fir S 48° W 46<sup>8</sup> ft

Set in Presence J A & Fay leather wood

Geo Mc Hugill ; V. I. Baird

Cor B 34 12

1	26° 28' h	14° 30' 27° 55'	299 <sup>8</sup> 47 <sup>6</sup>	N 4° W	N 2° 16' W
2	15° 10'	22°	300°	N 11° 10' E	N 10° 54' E
3	15° 13' W	11° 30'	180 <sup>6</sup>	N 4° W	N 4° 19' W
4	0° 11' h	6° 10'	288 <sup>7</sup>	N 4° 30' W	N 4° 30' W
5	1° 06' R	3 1/2	190 <sup>8</sup>	N 3° 05' W	N 3° 74' W
6	1° 48' h	9 1/2	242 <sup>8</sup>	N 5° 10' W	N 5° 12' W
7	8° 58' R	34° 40'	300 <sup>2</sup>	N 4° E	N 3° 46' E

190<sup>4</sup>  
237<sup>6</sup>

299  
59  
230

262  
59  
202

574°25E

- 1 0°51' W 17°
- 2 14°58' L 7°
- 3 00' 8 1/2
- 4 6°20' 13°

175° 578 1/4 E 578 1/4 E

202 2/3 } 201 2/3  
299 2/3 } 295 1/3  
273 0 } 266 1/3  
763 2/3

N 86°46' E

6°20'  
4 1/2  
9 1/2  
4 1/2

191 5/8 = 190 2/3  
300 2/3 = 301 2/3  
299 3/8 = 295 2/3  
152 2/3 = 152 0/3  
938 2/3

$$\frac{x}{\sin 54^{\circ} 59'} = \frac{554 \frac{2}{3}}{\sin 130^{\circ}}$$

6190

$$\frac{8190 \times 554 \frac{2}{3}}{2252} =$$

$$x = 2015 \frac{5}{8}$$

N 86°46' E

4 0°42' R -

250<sup>6</sup>

N 87°38' E

5 4°54' R 10°

171 1/2 = 168 5/8

S 87°38' E

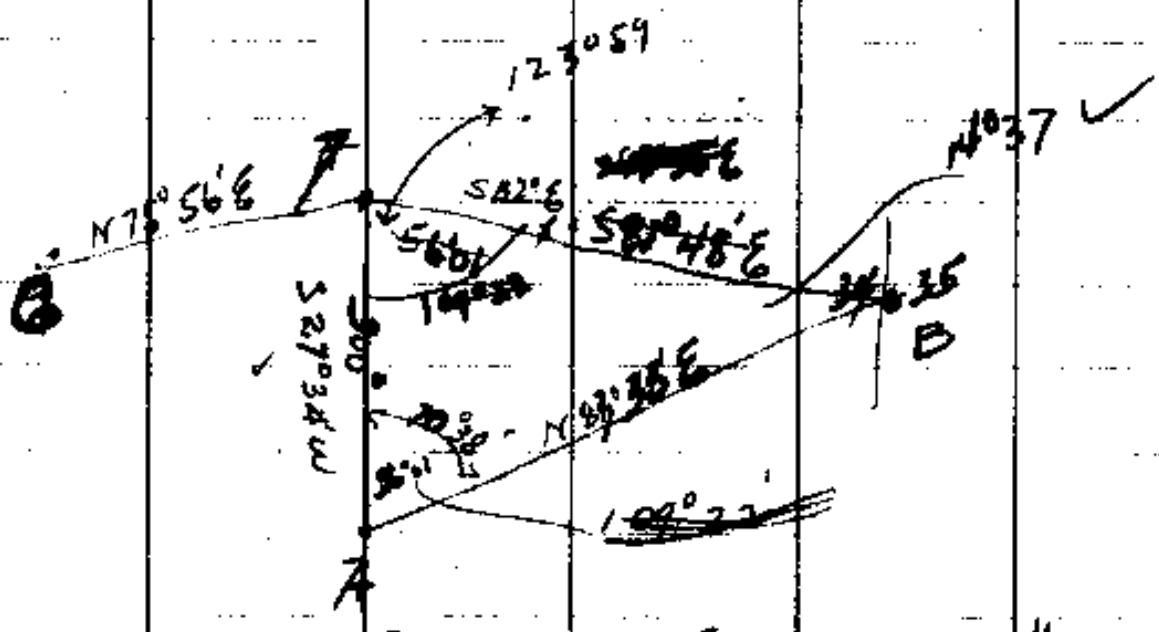
6 95° R 7 1/2

116 2/3  $\frac{1}{2} \times \frac{10}{16} 100$

CU 3/4

MacHughill

6	16°26' W	0	78 <sup>3</sup>	587'38" E
7				N75°56' E
8	131°38' R	Byrd	300°	S27°30' W
A				S27°34' W



B is E 15 ft. N 15 ft from 1/4 Cor.

Set Rock for 1/4 Cor. Bet 34 & 35

Found 16" B.O. N25°W 742' Pipe

Marked 0 18" Fir 53' ft

E. Bottom. wit. mens

$$\frac{x}{\sin 56^{\circ}01'} = \frac{300}{\sin 14^{\circ}57'}$$

x = 985' ft

Set Center of Sec. 34

Put in I. Pipe.

Marked 6" Level N85°E 62' ft

24' 00" N87°W 197'

G. McHughill.  
Subcontractor E. W.  
Spt. Off. Witness

570  
26

283.6  
100  
183.6

136  
19  
3.6

- 7 0° 50 R 4° 186<sup>3</sup> N 5° E N 40° 26' E
- 8 2° 00 L 7 1/2 180<sup>2</sup> 178<sup>5</sup> N 2° 40' E N 2° 36' E
- 9 8° 28 L 13 1/2 223<sup>1</sup> (217<sup>0'</sup>) N 6° W N 5° 52' W
- 10 8° 22 R 18° 261<sup>6</sup> (248<sup>5</sup>) N 2° 10' E N 2° 20' E
- 11 19° 35 L - 48° 48° N 16° 30' W N 17° 05' W

289<sup>9</sup>  
42<sup>L</sup>

12

278<sup>L</sup>

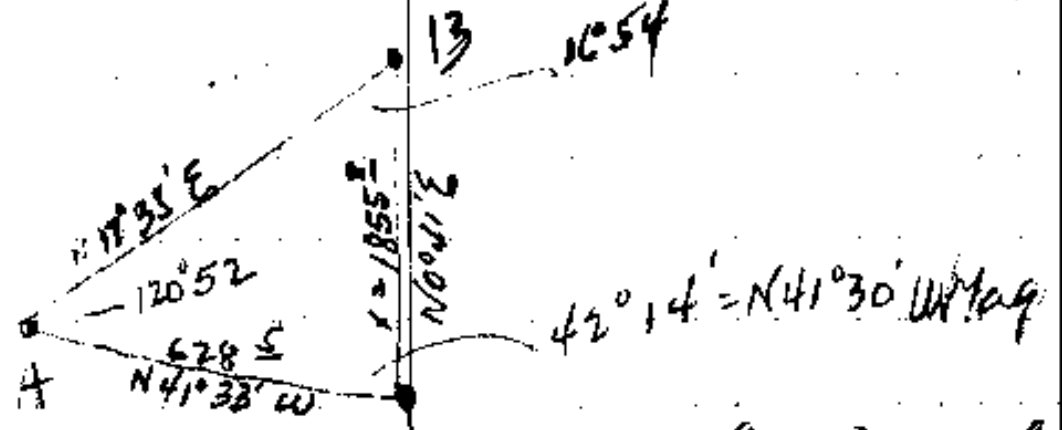
177<sup>2</sup>

287<sup>0</sup>

190<sup>2</sup>

239<sup>3</sup>

246<sup>2</sup>



$$x = \frac{628^E \times \sin 59^{\circ} 04'}{\sin 16^{\circ} 54'} \times \frac{1}{290^Z}$$

- 274<sup>9</sup> @ 5° 273<sup>9</sup>
- 297<sup>3</sup> @ 5° 20' 296<sup>0</sup>
- 60<sup>1</sup> @ 12° 45' 58<sup>6</sup>

628<sup>E</sup>

- 12 17° 46' R N 1° 06' N 0° 41' E
- 13 B.S.A. (6 1/2) 300° 98 E (298°) (85 N 17° 35' E)
- 14 16° 54' N 22° 91° N 0° 35' E N 0° 41' E

McHiguel

14				N041°E
	5°34' W	14°	196'	N5°20' W
15				N4°53' W
	9°40'	7°40'	235°	N5°45' E
Cor.				N4°41' E ✓

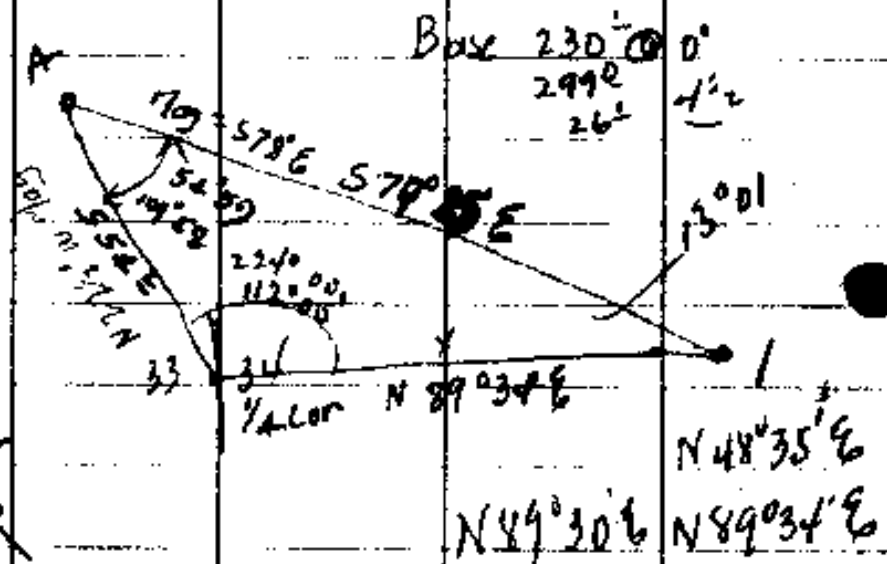
To Cor 27-28-33-34  
 Cor s set with Rock ~~and~~ O.B.T.s Standing

Reset 1/4 bet. 33 & 34. Midway  
 bet. Sec. Cors.

Set white I. pipe  
 24" Fir N42° W 62' ft.  
 30" " S66° W 63' ft.

Rec

Weather wood - Baird - Barton McHiguel Witness  
 Run East @ 90° To Section  
 start at 1/4 Cor Set



Cor 133# 12  
 40' 59" R

N49°30'E N89°34'E

