

33 34

(N 5381<sup>2</sup>  
W 2619<sup>2</sup>)

(E 28<sup>2</sup>  
N 5349<sup>2</sup>)

(N 5334<sup>4</sup>  
W 5267<sup>4</sup>)

N 0° 17' E  
1200'

(N 4034<sup>4</sup>  
W 5274<sup>4</sup>)

(N 4016<sup>2</sup>  
W 5950<sup>2</sup>)

3998<sup>5</sup>  
(N 4030<sup>2</sup>  
W 2626<sup>2</sup>)

N 89° 29' W

(N 2714<sup>4</sup>  
W 5280<sup>4</sup>)

(N 2696<sup>4</sup>  
W 3957<sup>4</sup>)

(N 2678<sup>5</sup>  
W 2633<sup>5</sup>)

(N 2660<sup>5</sup>  
W 1310<sup>5</sup>)

S 89° 13' E

(N 1391<sup>8</sup>  
W 5293<sup>8</sup>)

(N 1374<sup>4</sup>  
W 3960<sup>4</sup>)

N 0° 11' E

N 0° 14' E

(N 1338<sup>8</sup>  
W 1315<sup>8</sup>)

(N 1324<sup>3</sup>  
W 1315<sup>3</sup>)

N 89° 14' W

(N 1356<sup>5</sup>  
W 2638<sup>5</sup>)

N 0° 17' E

(N 169<sup>8</sup>  
W 5285<sup>8</sup>)

N 89° 13' W

(N 346<sup>5</sup>  
W 2642<sup>5</sup>)

(N 173<sup>3</sup>  
W 1321<sup>3</sup>)

4 3  
9 10

3 2  
10 11

34 35 36  
2 2 4

CS 7/14

27-28-33-34 T24SR60

North bet 33-34 Var 18 30 E.

1900 top of hill N 25° E,

2100 Leave oak opening Enter <sup>Timber</sup>

2600 Foot of steep desc. East N.

40.00 Set 2 sec posts from which.

A Fir 8 m dia. S 60° E. 119 lbs.

" " " " N 55° W. 55 "

4775 Stream 4 lbs wide S W.

4900 Small fir timber Oak opening

5200 leave creek bottom. begin ascent

5000 Set cor posts of sec. 27-28-

33-34 from which.

A Laurel 26 m dia S 50° E 106 lbs

Y Oak 18 " " N 57 1/2 W. 47 lbs

" " 24 " " S 67 1/2 W. 57. "

" " 11 " " N 31 W. 77 "

Coord y 14 cor  $\frac{3}{10} =$

W. 2635

N 38°

Coord No 3 hub =

2675

S 19°

go E. 40 ft No 27.

$\frac{12}{66}$   
782

48  
46  
2858  
3 1.68  
74  
3 9.5

OS  $\frac{2}{1}$

J. A.

Fay Leatherwood

March 22 - 1922

Found 1 B.T. a 12" W.O. S 64° E 82° ft.  
 stump of B.O. S 55° W 14° ft.  
 Set a sandstone for Cor with  
 + cotton it. for Cor Conn. To  
 2-3-D-10.

6" Pine S 15° W 135° ft  
 Rec 2" W.O. S 64° E 82° ft O.B.T

16" W.O. N 38° E 116° ft

No other Tree Suitable

J. A. Leatherwood, Fay Leatherwood  
 Witness

Cor

				North	
		10°	300°		N 1° 06' E
1	1° 06' L	13½°	300°	North.	North
2	0° 08' R	6°	283°		N 0° 08' E
3	0° 43' L	-	141° 260	No	N 0° 35' W
4	0° 15' L	11¾°	299°		N 0° 50' W
5					

300  
180  
120

300  
162  
138

300  
10

1380

4+45 = fence  
line

2954 ✓

2912 ✓

2814 ✓

4019 ✓

2936 ✓

05 9/14

5

255 R 6 W  
Leatherwood

1040' R. 8<sup>30</sup> - ~~7300~~ 700 e N1°10'E N0°50'W  
N0°50'E

6

0°21' R 5° 293<sup>7</sup> N1°15'E N1°11'E

7

0°13' R - 227<sup>9</sup> N1°45'E N1°24'E

8

2°11' L 1 1/2° 162<sup>5</sup> N0°30' W N0°47' W ✓

1/4 Cor let 2+3 1

Set sq Oak Post. for Cor.

✓ 16" Fir N63°E 32<sup>0</sup> ft.

✓ 18" Fir S59°W 15<sup>6</sup> ft.

Rec Foye J. A. Leatherwood Witness

E. E. Goodman. Geo Met. Hug. 11

Found 1 B.T. standing and dead

→ 1 B.T. Fallen

296  
100

Go To 2-3-9-10  
Site # 1

201  
385  
1625

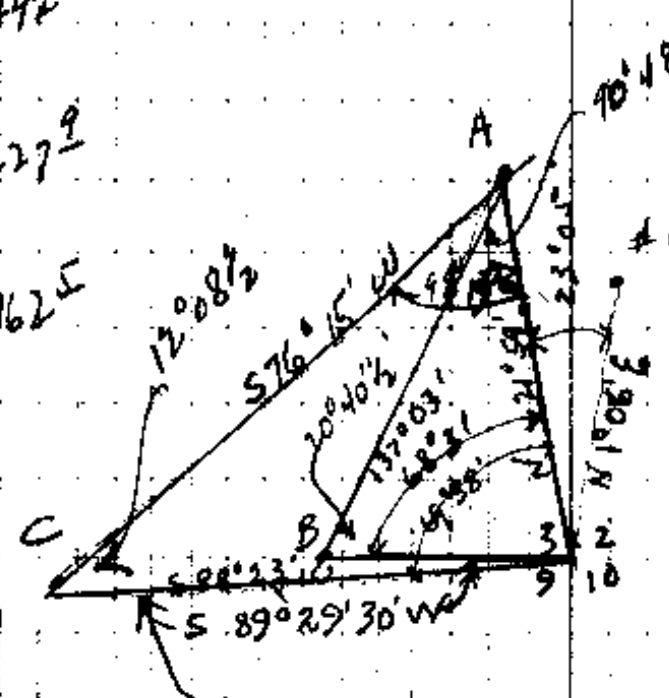
900  
300  
1320  
258

292

796  
400  
1396

227

1625



300 @ 10° 35' 24.9  
+ 1647 @ 15° 05' 19.0  
453

Base = 453 ft

Set at (2-3-9-10)  $\angle$  A-Cor-B 68° 31' 30" (M-N 99° W)  
 $\angle$  A " C 69° 38' (139° W) (58° 45' W)

Set at A.  
Cor-A-B 90° 48' + 181° 37' (S 68° 1/2 W) MAG  
Cor A-C 98° 14' 196.27' (S 76° 10' W)

$$x = \frac{y}{\sin 98^\circ 13' 30''} = \frac{453}{\sin 120^\circ 8' 1/2}$$

$$y = \frac{453 \times 989.7}{210} = 2137 \text{ ft}$$

CS 7/4

# Lashburn

588°23'W

C

4°09' R - 68<sup>5</sup> N87°30' W N87°28' W ●

1

4°23' R 5°40' 247<sup>9</sup> N83° W N83°05' W

2

4°53' W 3° 226<sup>4</sup> N88° W N87°58' W

3

2°52' L 7° 191<sup>8</sup> S89° W S89°10' W

4

4°54' R 16°50' 252<sup>7</sup> N86° W N85°56' W

5

4°54' L 15°20' 249<sup>2</sup> S89° W S89°10' W ●

6

0°28' R 4° 117<sup>1</sup> S89½° W S89°38' W

7

1°55' W 9° 300<sup>0</sup>/<sub>128</sub> S87°30' W S87°48' W

8

9°18' R 14°40' 104<sup>2</sup>  
13°30' 245<sup>2</sup> N83°30' W N82°54' W

9

1°22' R 26°55' 157<sup>2</sup> N81½° W N81°37' W ●

10

0°56' L 12½°  
3½° 95<sup>3</sup> N82°30' W N82°33' W

11

9°31' L { - 300°  
330° S87½° W S87°56' W

12

276  
243  
37

● 68<sup>5</sup>

246<sup>2</sup>

226<sup>4</sup>

190<sup>4</sup> ✓

241<sup>9</sup> ✓

●

240<sup>2</sup> ✓

116<sup>8</sup>

{ 296<sup>3</sup> ✓  
128<sup>0</sup> ✓

{ 100<sup>6</sup> ✓  
239<sup>3</sup> ✓

●

140<sup>3</sup> ✓

930

{ 299<sup>4</sup>  
33<sup>2</sup>

CS 8/14

Leatherwood

12	0° 12' h	4 1/2°	300	S 87 1/2° W	S 87° 56' W
13	14° 54' R	3°	205 <sup>I</sup>	N 78° 30' W	S 87° 44' W
14					

Sec ~~2-4~~ 9-10

Found O.B.T. in sec 10. others gone. Set Rock for Cor. 1' out of ground.

Marked a 48' Fir S 58° W 25° ft sec 9  
 8' Fir N 68° E 14° ft " 3 ●  
 24" Fir N 19° W 24 1/2 ft  
 15' " S 20° E 35° " D.B.T.

Fay & I.A. Heatherwood, Geo M<sup>c</sup>Hugill witness  
 3/22/1922

14 Continue from #14, North N 77° 22' W

14	78° 46' R	4° 10'	91 <sup>5</sup>	N 130° E	N 124° E
15	8° 09' W	12° 50'	65 <sup>8</sup>	N 7° W	N 64° 5' W
16	2° 40' R	26° 15' 16° 10'	224 <sup>4</sup> 159 <sup>4</sup>	N 4° W	N 4° 05' W
17					

299<sup>1</sup>

✓ 204<sup>2</sup>

91<sup>3</sup>

64<sup>2</sup> ✓

{ 201<sup>2</sup> ✓  
153<sup>1</sup> ✓

160.

# 14 is by sec  $\frac{3-4}{9-10}$

Cor. is 1<sup>o</sup> Doc East  
of # 14.

299<sup>4</sup>  
72  
22 ✓

17 is 20<sup>o</sup> North

05 2/4

Leather wood

17	5°38' R	27°05'	223 <sup>5</sup>	N2° E	N4°05' W N1°33' E
18	1°04' L	18°	120 <sup>5</sup>	N0°15' E	N0°29' E
19	0°49' L	27°50'	180 <sup>5</sup>	N0°30' W	N0°20' W
20	9°47' L	15 <sup>1</sup> / <sub>2</sub>	125 <sup>2</sup>	N10° W	N10°07' W
21	29°11' R	12°	112 <sup>3</sup>	N19° E	N19°04' E
22	15°14' R	4°	171 <sup>3</sup>	N34° E	N34°18' E
23	34°18' L	7°40'	284 <sup>5</sup>	North	North
24	4°02' L	8 <sup>4</sup> / <sub>5</sub>	261 <sup>4</sup>	N4° W	N4°02' W
25	13°57' R	3 <sup>1</sup> / <sub>2</sub>	158 <sup>5</sup>	N10°00' E	N9°55' E
26	8°20' L	2°	273 <sup>7</sup>	N1°30' E	N1°35' E
27	3°12' L	10°	248 <sup>8</sup>	N2° W	N1°37' W
28	5°10' R	10°	171 <sup>2</sup>	N3 <sup>1</sup> / <sub>2</sub> ' E	N3°33' E
29					

199<sup>0</sup> ✓

114<sup>6</sup> ✓

159<sup>6</sup> ✓

120<sup>6</sup> ✓

110<sup>0</sup> ✓

170<sup>9</sup>

282<sup>0</sup>

258<sup>4</sup> ✓

158<sup>3</sup>

273<sup>6</sup>

245<sup>0</sup> ✓

168<sup>4</sup> ✓

300  
51.2  
-----  
248.8

05/14

# Leatherwood

N 3° 33' E

29

132° 56' L

130°

S 51° 30' W S 58° 37' W ●

1/4 cor

1/4 Cor 384

Found laurel O.B.T. badly rotted  
 B.O. is gone. Set Rock for cor.  
 Marked 6' Fir N 51° W 4 ft  
 Rec 10' S 10° E 12 ft.

J. A. + Fay leatherwood. Witness

Geo McHughill; V. J. Baird 3/22/22

Cont.

North from 29 (BS 28) ●

29

0° 10' R

8°

122°

N 4° E

N 3° 33' E

N 3° 43' E

30

0° 26' R

11°

160°

N 3° 45' E

N 4° 09' E

31

0° 31' R

7 1/2°

183°

N 4° 30' E

N 4° 40' E

32

8° 38' W

8 4/5°

235°

N 4° W

N 3° 58' W

33

0° 05' W

11° 45'

220°

4° 00' W

N 4° 02' W

34

1° 37' R

6°

085°

N 2° 45' W

N 2° 26' W

35

● ✓ 130<sup>2</sup>  
Side shot to Cor.

189.60  
✓ 70.6  
-----  
118.98

399.0 58  
169  
-----  
130

259.3  
279  
58.7  
-----  
220.3

● 1708 ✓

1575 ✓

1812 ✓

2322 ✓

● 2157 ✓

882

(31) 9/4

Leatherwood

35	1°32' L	23½°	70 <sup>3</sup> / <sub>5</sub>	N4°W	N2°26' W N3°58' W
36	18°08' L	38°22' 22°40'	300 <sup>0</sup> / <sub>2458</sub>	N23°W	N22°06' W
37	27°42' R	14°	214 <sup>2</sup> / <sub>5</sub>	N5½ E	N5°36' E
38	3°37' R	23°	34 <sup>4</sup> / <sub>7</sub>	N9° E	N9°13' E
39	30°25' L	26°45'	162 <sup>6</sup> / <sub>5</sub>	N21°30' W	N21°12' W
40	3°59' R	20°10'	296 <sup>0</sup> / <sub>1</sub>	N17½ W	N17°13' W
41	41°22' R	13°	200 <sup>9</sup> / <sub>5</sub>	N24° E	N24°09' E
42	1°18' L	7°	297 <sup>6</sup> / <sub>2</sub>	N23° E	N22°51' E
43	5°55' L	—	212	N16°30' E	N16°56' E
Sec Cor	3-4-33-34				

645 ✓

{ 2352 ✓  
2268 ✓

2072 ✓

312 ✓

1452 ✓

2772 ✓

1958 ✓

2954 ✓

✓ 212

199 ✓  
36 ✓  
1626

CS 2/4

Leatherwood

$\frac{1}{16}$  Cor So of  $\frac{1}{4}$  bet  $\frac{2}{3}$   
Set 1" Iron. Marked a  
18" Fir S40°W 25° ft.

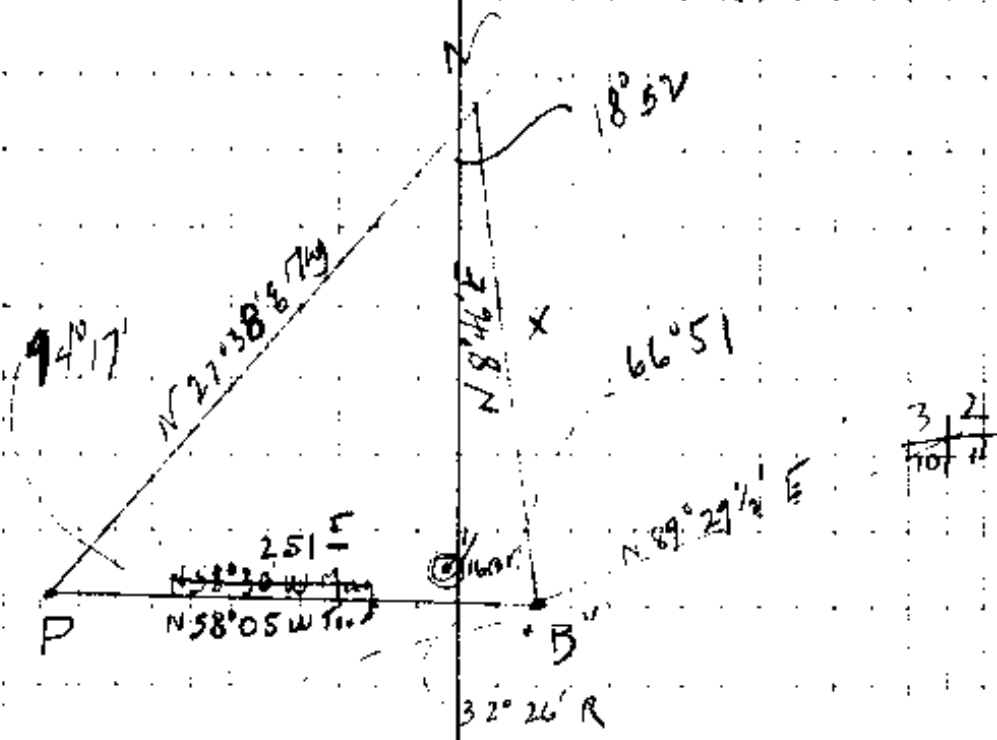
$\frac{1}{16}$  Cor East of  $\frac{1}{4}$  bet  $\frac{3}{10}$   
Set Window Weight for Cor.  
Marked 18" Fir Stump S30°E 30° ft

$\frac{1}{4}$  Cor bet  $\frac{3}{10}$

Set  $\frac{1}{2}$  way bet Sec Cor's.  
Set 4" squared Oak Post  
Marked a 24" Fir S33°E 24° ft  
18" Fir N 42°W 11° ft

3/23/1922 J.A. Leatherwood witness

go to 1/16 60 ft West of  $\frac{213}{1011}$



$$\frac{x}{\sin 94^{\circ}17'} = \frac{251.5}{\sin 18^{\circ}52'}$$

$$x = \frac{251.5 \times 9972}{3234} = 775.5 \text{ ft}$$

S: 89.29 W  
32 24  
21 30  
58 20

CS 9/14

"B"

	<del>N8</del>		77.5 <sup>S</sup>		N846E ●
1	4°28' L	15½	236 <sup>8</sup>	N43°E	N4°18' E
2	25°52' L	10°	241 <sup>L</sup>	N22°W	N21°34' W
3	18°44' R	10½	706 <sup>Z</sup>	N2°W	N2°51' W
4			95 <sup>S</sup>		S45° W
5	1°38' W	14°	224 <sup>0</sup>	N40°30' W	N4°28' W ●
6	7°09' R	15°45'	262 <sup>9</sup>	N3°E	N2°41' E
7	30°30' L	8½	156 <sup>0</sup>	N28°W	N27°49' W
8	24°45' R	-	181 <sup>0</sup>	N3°W	N3°04' W
9	1°10' L	18°	79 <sup>L</sup>	N4°15' W	N4°44' W
10	5°09' L	23½	192 <sup>Z</sup>	N9°W	N9°23' W
	25°32' R	-	110 <sup>Z</sup>	N15°E	N16°09' E

11

228<sup>2</sup> ✓

207<sup>4</sup> ✓

203<sup>2</sup> ✓

Set SE cor of W. & S. 64

To SE cor

● 217<sup>3</sup> ✓

Set 1

Window Weight

Marked

o 18' Fir N 51° W 26' I ✓

253<sup>0</sup> ✓

154<sup>3</sup> ✓

181<sup>0</sup>

75<sup>2</sup> ✓

● 176<sup>2</sup>

CS 7/4

11

2° 50' L

114 <sup>6</sup>

N 13° 30' E N 13° 19' E

12

Set Window Weight for Cor  
of NE Cor of NW 1/4 Sec 3  
Marked a 24" Fir (N 64° 30' E 30' ft.

Needle Line

19 <sup>30</sup>

273 <sup>8</sup>

N 89° 13' W

off set 6' No

14° 30'

90°

off set 6' So

5°

218 <sup>6</sup>

4 <sup>1</sup>/<sub>2</sub>

170 <sup>5</sup>

16°

90 <sup>2</sup>

off set 3' So

27 <sup>1</sup>/<sub>2</sub>

244 <sup>0</sup>

off set 3' No

7 <sup>1</sup>/<sub>4</sub>

170°

10°

120°

Cor Cent Sec. 3 set 6" x 6" x 16" Rock

14" Fir S 54° W 37 <sup>1</sup>/<sub>2</sub> ft

24" " S 22° E 62 <sup>8</sup> ft witness

3/24/1922 weather vane of 17<sup>th</sup> Hoop

258<sup>0</sup>

87<sup>2</sup>

218<sup>0</sup>

170<sup>2</sup>

86<sup>7</sup>

216<sup>5</sup>

1036.4

168.8

1205.2

118.7

1323.1

2633<sup>8</sup>  
1310<sup>3</sup>  
1323<sup>5</sup>  
205<sup>2</sup>  
118<sup>3</sup>

CS 2/14

Continue S from Cent Sec.

offset 3° East 50° 11' W

20° 223°

" 3° West

3° 167°

" 5° West

5° 248°

offset 5° 27° East

17 1/2 116

11° 10' 181°

4' 109°

offset 10° West

7° 277°

offset 10° East

25°

To 1/16 Cor. SW cor. NW 1/4 Sec 3

Put in 4x6x12 Rock

12" Cedar S 63° 30' E 112 ft

Thence W

N 89° 14' W

offset 2° So

18° 172°

" 2° No.

13° 10' 160°

2° No

209<sup>4</sup>

166<sup>9</sup>

247<sup>2</sup>

110<sup>7</sup>

178<sup>0</sup>

109<sup>0</sup>

275<sup>5</sup>

1296.7  
25.6  
1321.7

164<sup>3</sup>

156<sup>4</sup>  
320<sup>7</sup>

139

22

6

2660<sup>5</sup>

1338<sup>9</sup>

1321<sup>6</sup>

1246<sup>9</sup>

24.7

CS 9/14

Cont

Var  $21^{\circ} 10' E$

30	162 <sup>2</sup>	N $89^{\circ} 14' W$
" 20	South	
4 1/2	122 <sup>6</sup>	
5	108 <sup>7</sup>	
9	152 <sup>0</sup>	
14 1/2	223 <sup>3</sup>	
26 30'	96 <sup>9</sup>	
8 30'	158 <sup>0</sup>	

To 1/16 Cor SW cor N 6 1/4 Sec 3

Set rock for cor.

on 30° Fir N 17° W 58<sup>8</sup> ft

( 29° 45' 40<sup>8</sup> N 26° E  
27<sup>20</sup> )

Set NW cor of SW 1/4 of NW 1/4 Sec 3  
set Rock.

10" Fir N 20° E 32<sup>0</sup> ft

or set 12 No. N 89° 14' E

24° 20' 82<sup>6</sup>

1 So

15° W 48<sup>5</sup>

3 1/2 189<sup>6</sup>

12 No

320<sup>7</sup>

162<sup>0</sup>

172<sup>2</sup>

108<sup>0</sup>

150<sup>2</sup>

216<sup>2</sup>

86<sup>2</sup>

1166.0

156.0

1322.0

354

754

468

1894

204

88

60  
115  
25.5

99  
7.50  
23.5

3923

3960<sup>6</sup>

2638<sup>2</sup>

1322<sup>0</sup>

1166<sup>0</sup>

1556<sup>0</sup>

249<sup>8</sup>

259<sup>8</sup>

194  
354  
164.0

2/14

Fall weather record cont

12°  
300°  
35°

apt 1 vt So

33° 47°  
37°30 290°  
22°30 140°  
26°10 99°  
28°30 98°  
32°40 75°

Set 1/16 Cor. 116° or Sw'y 11W'y

Set Rock

Marked: ~~30~~ Fir 505W 28° ft 3/24/22

S. Indry 24 S R 6 W.  
S 89° 54' W on Boundary of SE 34

● Var 18° 40' E.

9.50 Prairie c. S.

21.00 Top of Ridge, c. N & S.

40 Set for Se Post from which.

A. Oak, 16 in  $\Pi$ , diam, b N 20° W 31.1 ks.

14 BS, 4 1/2 E 195"

Var 18° 15' E.

6250 Stream, 151 ks wide, c. S. E.

80 Set Post to cor Sec's 33, 34, 3 & 4.

● From which <sup>o</sup>W. Oak, 12 in  $\Pi$ , diam BS 12°  
E 42 / ks.

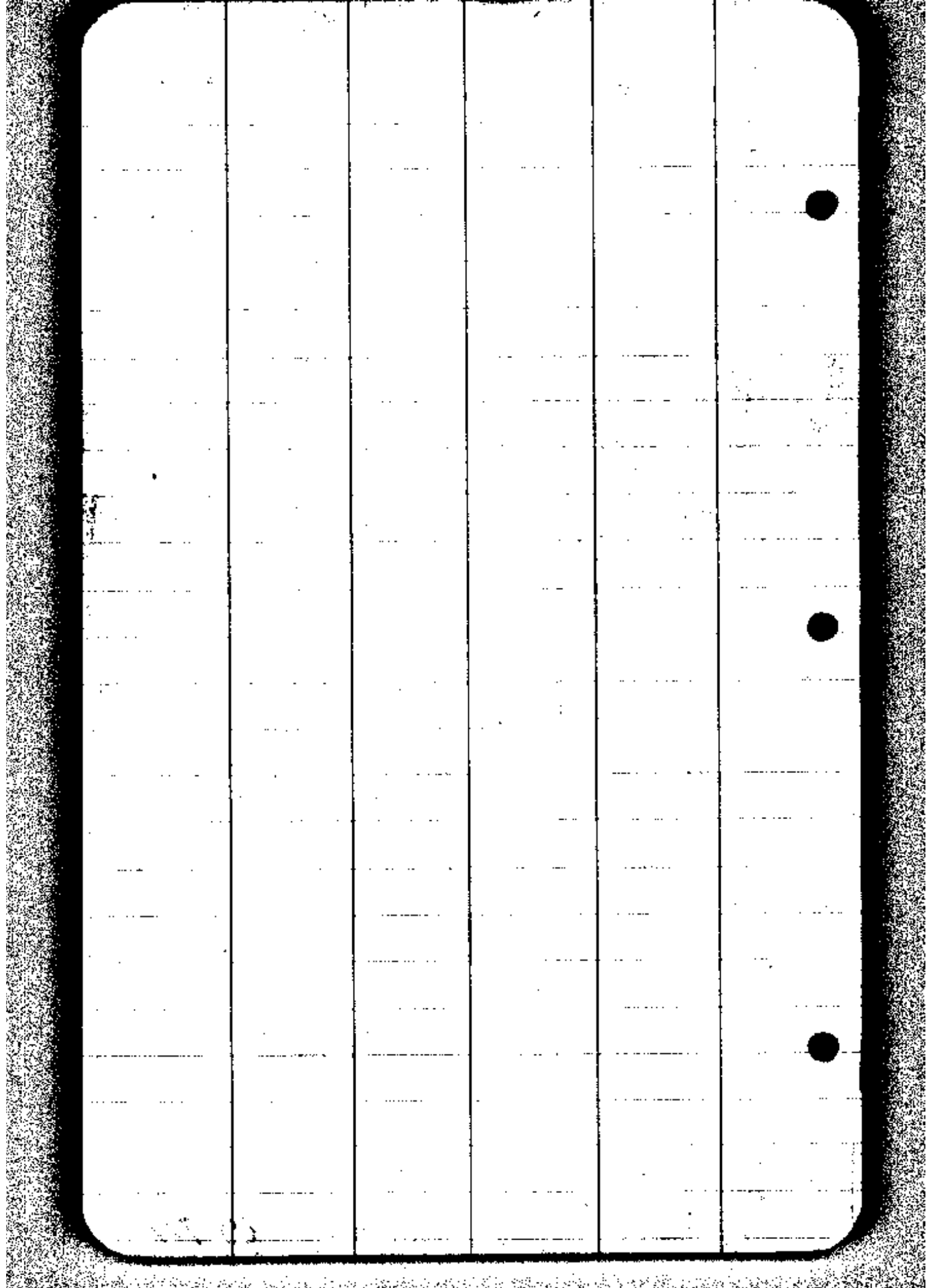
A Oak, 15 in B.S. 57° W 125."

A Laurel, 15" " B. N 39° W 110."

A. Oak B. N 0° 15' E 60"

Sandy Hilly Soil 2d note.

CS 9/14



66  
10  
17  
64  
102  
10

Se 33

S 89° 54' W on S. B. of Se. 33.

Var 18° 25' E

350 Top of Spur. c S.

20.00 ~~Set~~ Fir Timber. c N.S.

2200 Stream. 15 in wide. c 86° E.

40. Set or post. from which.

A Yellow Oak. 12 in diam. B. N 62° W 24

Fir 14 in B. S 68° W 21"

44.50 Top of Spur. c N to S.

8000 Set Post to cor Sec's 32, 33, 4-5.

From which.

A Laurel. 15 in in Diam. B. N 26° W 11 3/4

" " 20 " B. N. 11 1/2° E 38.1 ks

Fir 48 in " " B. S 57 1/2° E 43."

Laurel 15 " " B. S 18° W 17 "

S 89° 54' W on South Bdy of Sec. 32.

Var. 18° 50' E

870 Stream 12 ks wide c North.

1400 Fack trail. c N and S.

15.20 Stream 3 ks wide c N 70° E

4000 ~~Set~~ Post. From which.

A Fir 8 in Diam. B. N 4° W. 12.1 ks.

" " 12 " " B. S 5° E 16."

2  
4340 Stream, 3/ks wide, c. S. 70° E

67.00 " 3 " " c. N 70° E

80.00 Set Post ~~at~~ to 31, 32, 5, 6

From which:

A Fir 6 in Diam B N 32 1/2° E 54 k's.

" " 14 " B N 13 W. 58 k's

Y oak 12 " " B. S. 74° W 136 "

" 15 " " B S 6° E 155 "

Soil 2d rate.

S 89 3/4' W on Sbdwy 31.

Var 18° 55' E

7.50 Top of Ridge. c. N 1/2 S.

26.90 Stream, 3/ks wide, c. S. E.

40.00 Set gr. Post. From which.

A Fir 15 in Diam B. S. 11 1/4° W 83 k's

" " 18 " " B. N 19 W 108 "

Var 18° 55' E.

64 Summit of Mtn c. N 1/2 S. Begin to  
Descend.

8175. To Township cor.

Lowd Mln's Soil 3d rate.

Trail H - 25 - West.

On Random Betwixt 3 and 4

Var 18° 30' East.

● 80.60 Intersect at post.

South on true line Betwixt 3 and 4

925 Bed of stream 15 in wide SE

2500 Top of Ridge N.E.

Dry

Set up post from which

A level 16 in S 11° E 2 7/8 lbs.

Yook. 12 in S 83 W. 46."

48.50 Top of spur. N.W.

74.25 Bed of stream 4 lbs wide SE

● 80.60 to see Cor.

Dry

Betwixt 4 and 5

S 1° 30' E on true line Betwixt 4 and 5

4.600 Leave pond creek. 6 lbs wide. c. S.E.

650 Enter Baker's field N.W. Baker's

house bears N 75° W. 700. Change

1980 Leave field and valley begin

to ascend. E and N.

● 2400 Top of ascent. leave fence E.W.

39.87. Set up post. from which

A N Cap. 11 in Dial N 42 1/2° N 35 lbs.

Y" 22 " " S 6 1/2 E. 67 "

CS 7/14

4  
2 and 3<sup>TT</sup> 25 R 6

Northon Random. Betsecs 2 and 3.

Var 18° 15'

81.31 Intersect. 18 lbs from post. ●

88' How tree line Bet sect 2 and 3.

13.00 Top of spur N.E.

41.31 Set gr post. from which a white  
Oak, 12 in diam S 87° E. 12 lbs.

Yellow oak, 12 in diam N 30° W ~~45~~

84.31 To see cor.

---

N 89° 20' W Oak tree line Bet secs 3 and 10

900 Trail N. W. ●

12.25 Bed of stream 20 lbs wide.

S.E. Begin to ascend. N. W.

32.00 Top of ascent N Slope of hill

39.88 Set gr post. from which  
Laurel 15 in diam. S 15½° E 58 lbs.

Yellow oak. N 67° W 100 lbs.

6500 Ravine N 20° W.

7976 To see cor.

T 25 - 6 6

45.00 Enter prairie N.E.

54.00 foot of descent. N 70° W.

● 61.00 leave prairie enter Creek Bot.  
C.N. 70° E.

64.75 California Creek. 80 lbs wide N.W.

6800 Enter prairie N 70° E.

7985 To see Cor.

S 89° 32' E. On Random line Bet 4-9.

Var 18° 30' E.

8004 Intersect N. 11. lbs from front.

● N 89° 27' West on tree line Bet sec's 4-9.

25 Enter prairie N.E.

32 foot of hill N.E.

36 Enter oak opening. N.W.

4002. Set up post. from which.

A Laurel. 36 lbs diam S 15° N. 24th.

Var 18° 40' E. York. line dia N 21½° E 10"

45.00 Enter prairie N.E.

70.00 foot of hill and Road. c N.E.

● 804. to see Cor.

CS 7/4

66  
26  
296  
194  
231

North Bet Sec's 8-9.

Var  $18^{\circ} 30'$  E.

6.50 Top of hill N E leave oak opening  
Enter fir timber

1750 Enter Oak opening N N.

40.00 Set 9<sup>th</sup> post. from which

A y oak 16 in dia N  $47\frac{1}{2}$  N 26 lbs.

Var  $1830$  E, y oak 10 in dia  $57\frac{1}{2}$  N 60 "

5506 A y oak 15 in dia.

6200 foot of hill enter prairie N.E.

6900 Road East N.

80.00 Set Cor. post. to sects 4-5-8-9.

from which

A y oak 36 in dia N  $23\frac{1}{2}$  N 990 lbs.

A y oak 22 in dia N  $28^{\circ}$  E. 867 lbs.

Made trenches

North Bet 34 and 35 sec's Var.  $18^{\circ}40' E.$

11.00 Top of Ridge East N.

● 3500 Enter cañon opening East N.

40.00 Set up post. from which

A Hook 12 in dia.  $N 72^{\circ} E 221$  lbs.

Var  $18^{\circ}05' E$  " 16" "  $N 25^{\circ} W 367$  "

50.50 Top of Spur S N.

56.00 foot of descent East N.

80.00 Set post to connect 26-27-

34-35. from which.

A York 36 in dia  $N 68^{\circ} W 47$  lbs.

● " " 16 " "  $68^{\circ} E 87$  lbs.

" " 15 " "  $N 1^{\circ} E 40$  "

" " 18 " "  $S 37^{\circ} W 313$  "

OS  $\frac{3}{4}$

33 and 34. 9

North bet sects 31 and 32.

Var 18° 5' 6" E.

3300 Bigwits Decid.

4000 Set gr. sec post. from which

A Y oak. 10 in Dia 8. 78° N 27 lbs.

" " 20 " 30 E. 82 lbs.

4230 Fir 56 in Dia

4400 Stream 3 lks wide & east

6800 leave fir timber and  
enter oak openings. East N.

7800 top of spur.

8000 Set for Posts of, 29-30

31-32. from which

A Y Oak! 20 in Dia 8. 69 1/4° E 454 lbs.

" " 11 " " 46 3/4° E 362 "

" " 13 " " 48 9/16° N 68 "

" " 13 " " 86 6 3/4° N 50 "

A

T 24 S - R 6 W.

1/4 bet 26 + 27.

40° y.O. 20" S 44° W 19 links  
Javel 17" S 48° E 39"

1/4 27 + 34 N 89° 42' W

37 1/2 top hill; 40.16 1/2 1/4 cor  
W.O. 14" N 50° E 58 links  
" 20" S 6° W 176 "

Bet 28 + 33. N 89° 44' W.

23<sup>50</sup> stream; 40<sup>03</sup> 1/4 cor.  
15" Fir S 32° E 17 links  
6" " N 80° E 15 "

43<sup>50</sup> stream N 80° E.  
80<sup>06</sup> To cor.

N bet 32 + 33 - V 18<sup>50</sup>

38<sup>00</sup> top hill E + W  
40<sup>00</sup> 1/4 cor. W.O. 10" S 72° W 100 links  
y.O. 12" S 61° E 112

80<sup>00</sup> cor - 28 - 29 - 32 - 33.

6" yew N 47° E 14 links; 16" Fir S 34° W 40  
6" V Maple S 77° E 14; 20 Alder N 36° W 22

W 1/4

Net 28 + 29 @ 35° Top ridge E W

@ 40° 1/4 cor 24" Fir S 46° E 44 lks

18" Fir S 52 1/2° W 96 "

41 80 Fir 30" on line

@ 78° Top ascent on NW slope of hill

80° cor. 20 21-28-29

y. 0.10' S 76° E 25 lks; 16" Laurel

N 82° W 85 lks; 12" Laurel N 81° E 95

8" Laurel S 76° W 106

Net 29 + 32 S 89° 31' W

40° 05' 1/4 cor. W. O. 11° S 55° E 54

" 24" N 45° E 131.

80° 16 sec cor.

Net 27 + 28 North var 18° 50'

40° 1/4 cor y. 0.12" N 68° W 78 lks.

" 15" N 78 3/4° E 99

@ 63° y. 0 76" diam on line

S 89° 54' W on S of 35.

35° 25 Ravine N. 40° 1/4 cor

y. 0.12" S 46° E 20 lks

" 14' N 47° E 5 "

42° Top spur.

(C)

S boundary 35 (cont)  
70° Top ridge, start down

- 80° 34-35-2-3
  - y. O. 11" S 16° E 15
  - " 12" S 68° W 91
  - " 12" N 39° W 89
  - " 15" N 76° E 74

T 25 S R 6 W  
M. bet 10 + 11

- 40° 1/4 cor. y. O. 20" S 54° W 28
- " 10" N 83° E 62

80° Cor 2-3-10-11  
 W. O. 12" S 64° E 124; W. O.  
 12" N 22° W 7; y. O. 18" N 59° E 110;  
 y. O. 20" S 35° W 22

1/4 bet 2 + 11 39 96 1/4 cor  
 y. O. 16" S 15° W 76 lks; 20" y. O.  
 N 28° W 52 lks

- Cor 3-4-9-10 - 15" Fir S 2° E 35 i<sup>(13)</sup>
- y. O. 12" N 37° W 25; 8" Jamel N 63° E 16
- 7" Jamel S 68° W 55

as 1/4

4 bet 9+10. North.

W.O. 36" S 54° W 82

" " 16" S 85° E 45

② 35 5/8 36" y.O on line

T 24 S R. 6 W.

Ben at 1/4 post bet 32 + 33

W. 20 ch. marked. 5" F in for  
Cor. a 4" F in S 51° E 104 links  
4" " N 10 1/2° E 13 "

So. 20 ch. W. O 30" N 7° W 31 links

(?)

~~Ben at 1/4 bet 27 + 34~~

T 24 S R 6 W

From "K" just bet 32 + 33 - a rock

12 x 6 x 5 (Var 19° 55') N. 20° ch  
set rock 12 x 8 + 4 from which  
a 48" pin S 67 1/4° E .52 links

S 89° 58' E around, 65° Top of mound  
20° ch. set post from which a

12" pin N 80 1/4° E 36 links

20" pin S 54° E 58 "

South 20° ch. set post

C. U. G. 12' diam N 13 3/4° E 27 links

" " 16" N. 0° W. 26 links

CS 1/4

Reset Corners T 25 S R 6 W

Post. 5-6-78 R. Fir 8'  $N 49^{\circ} 40' E$  31 links

W.O. 6"  $N 23^{\circ} 45' W$  48; R. Fir 5"

S  $53^{\circ} 40' E$  4 links; R. Fir 5"  $S 28^{\circ} W$  25 links

1/4 cor W side 5. Red fir, 4"  $N 46^{\circ} 40' W$

77 links; R. Fir 34"  $N 47^{\circ} E$  39 links

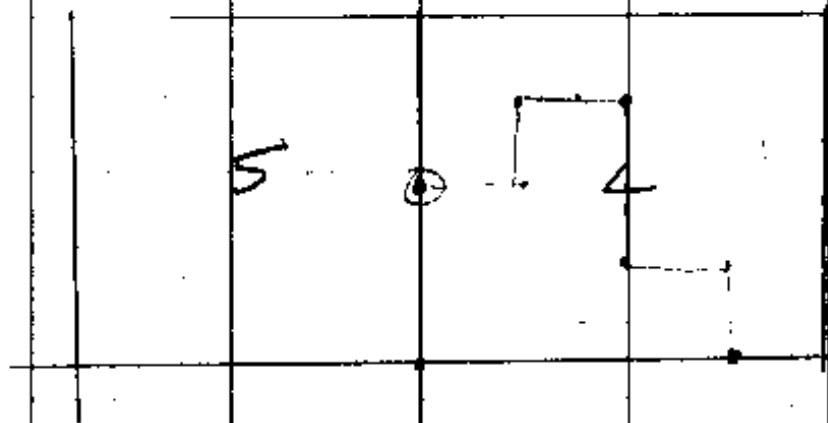
1/4 bet 7+8. Post.

R. Fir 8'  $N 52^{\circ} E$  16 links

R. Fir 50"  $N 60^{\circ} W$  77

1/4 on East side 8.

W.O. 40" diam  $S 26^{\circ} W$  53 links



T 24 - 6

1/4 cor bet 27 + 28

Plant. 6 x 14 x 16 blocks

B.G. 12" S 30° W 143 links

1/4 bet 10 + 11 25 - 6

10 x 10 x 10 sandstone

20' Fir 77 1/2° E 8 links

05/14

8/16/67

8/16/67

CS FILE FOLDER

CONTAINS

MORE

INFORMATION