

(2)

Survey for Compton T25 SR 510

Began at Cor. of Sec 20-21
28-29 which was previously
runned Thence East
for assumed 2045

Compass line
0 = Cor.

1

2

3

4

5

6

589°15E

7

Hot.

August 2, 1929

{ J. W. Cole
Mr. Bruegge

#3 near Ravine

Top of Hill

#33 Chain west of #6. intersect 25 ft of

Top of Hill called at 3550 ft

offset 50' south

Bazed Tree 20' L.

W. 27

8.

9.

Runne East along fence
to S. E. Cor.
Dec Cor.

East.

Corrected line through
7989° 30W on line of old blaze

offset 12" South.

Intersect $4\frac{3}{4}$ Poles N of BT. NY = 67 ft
North of Pie Con.

Revised. do to Dec 21-22-27-28
from Original B90 or Stump of 18 Lams
B. 75 $\frac{1}{2}$ to 83 lbs. 36" Fir 720 W 156

Fir shows peculiarities but no
scrub marks. Chopped tree open
but no marks show. Set a rock

10 x 10 x 20 marked X @ S and

3 notches on E side 2 notches

South side marked new tree

A Fir 14" S 66° E 154 ft

A Fir 8" N 48° 15 E 102 "

Rock 3' high 71 45° W 192 "

CS 2/2

From Apr to Dec 22-23-26-27
 Thence South 0° 45' N 21° 45'

+ 27°
 135° — 120°

#1

+ 24°
 215° — 196°

+ 21°
 106° — 99°

+ 11°
 111 — 109°

140°
 80°
 + 22°
 300° — 297°

190°

12312

600°

1832

+ 22°
 84° — 77°

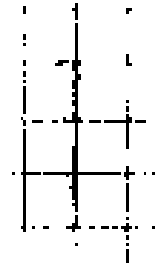
1910

+ 12° 30'
 300° — 293°

2203

+ 18°
 300° — 285°

2486



Near tree just before Xing Canyon

02-62

2631 }
1/4 }

194°

770°

269.9

3762

648°

821.9

10132

12837

13085

19885

2077°

2185°

2296°

25822

+26°20
160°

143°

+22°45
102°

65
94°

+9°
77°
-40

76°

100°
235
108°

998
1064

275°

2712

-15°
-180°
-16°30'

1739

200°

1918

270°

270°

+23°
27°

248

680

680°

+27°45
100°

885

108°

108°

-11°
113°

111°

-7°
300°

286°

-16°
101°

-

Offset 108 ft East to Cor.
 Thence S. 1° 07' E

1974	-20°	342
4070	210°	1974
6845	-21°	
8681	223°	2096
9232	-22° 20'	
10429	300°	2775
12855	-23° 30'	
	200°	1836
	-15°	
	-57°	551
	-23°	
	130°	1197
	-18°	
	255°	2425

05042

Balfour - Guthrie Contd

Begin at the approx NE Co of Sec
by JWC 1920 Thence

581°30E

{ 46°
300' 298°
46' 46°

Flag #1

43

West

340°

North 10W

+ 8°15
104° 103°

Thursday Aug 9-23
 Hot & Clear
 Buggy

76 - T-25 SR 500 as previously set

5509 E 340?



Laurel

Dead Cedar

8°30'

193'

#2

#3

6" Stumps

6" Leaning Stump

Fir

60° 28' 15"

Base 190.9 x Sin 89° 07'

Sin 3° 15'

54° 50' E

6°

51° 15' E

3367'

#1

25' 26"

02-2

-13°00'
51° 498

-32°30'
100° 843

-39°25'
71° 526

-35°30'
300° 2442

-24°30'
188° 171

-8°00'
100° 99

Returned to top mountain
3367 and run 8100E

-20°
140° 1916

-22°30'
180° 1663

-17°15'
194° 1852

-18°30'
104° 986

-23°
145° 1335

-22°15'
162° 1490

Intersect 28' E of Possible 1/4 Cor.

About 300 Further Intersect 108' E of
blazed Tree.

Blazed Trees 162 West.

CS22

1527⁵

-16°
185° 177⁸

-18°30'
125° 118⁵

-18°30'
100° 94⁸

+26°30'
54° 48³

-24°15'
70° 63⁸

-25°00'
110° 99⁷

-29°
60° 52⁵

+22°30'
58° 53⁶

4940²

+38°00'
100° 78⁸

+36°
83° 67²

34°
80° 66⁰

+31°
60°

Creek

0620

Thence west.

-8	
48-	475
178°	178°
+8	515
52-	45°
45	
270°	270°
-7°00'	734
74	
-7°30'	578
60-	
-9°30'	2238
228-	
+11°	1964
200°	
-21°	607
65°	
-35°	696
85°	
-40°	804
105°	

13535

By an at point on above line
1322 ft west of Randon

offset 6' South,

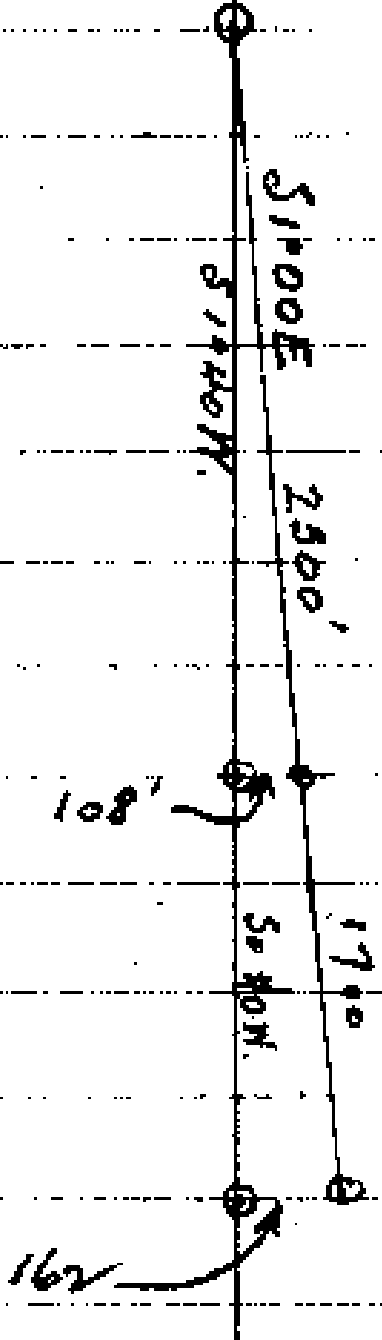
Cole
Brugger.

Takera Aug 13/23 Hot.

This dist 1031 A. in Govt field Notes

CS-2-12

June 7 1936 on possible
section line and looked for
slight trees



0528

Balfour - Guthrie Sep 5/23

From 1/4 Cor on N Side
Sec 26. Ran North

		+13°10'	202° ³
#1		+4°00'	97°
		97°	46°
		46°	
#2		-20°	282°
		300°	
#3		+8°00'	279°
		282°	
#4		21°	21°
#5		130°	130°
		+12°	154°
		158°	
#6		103°	

Cole
Richardson

Jan 21 '45

Near Spring

To Lot Cor

05712

Thence west by per page

11.1.

N89°15'W

22°

216³

22°

-10°40'
-220°

216³

238³

+9°20'
75°

74°

312³

300°

300°

612³

42°
144°

144°

756³

-14°20'
90°

87°

843⁵

-22°
300°

278°

11216

+7°20'
157°

155°

1277⁴

40°

1317⁴

N89°15'W

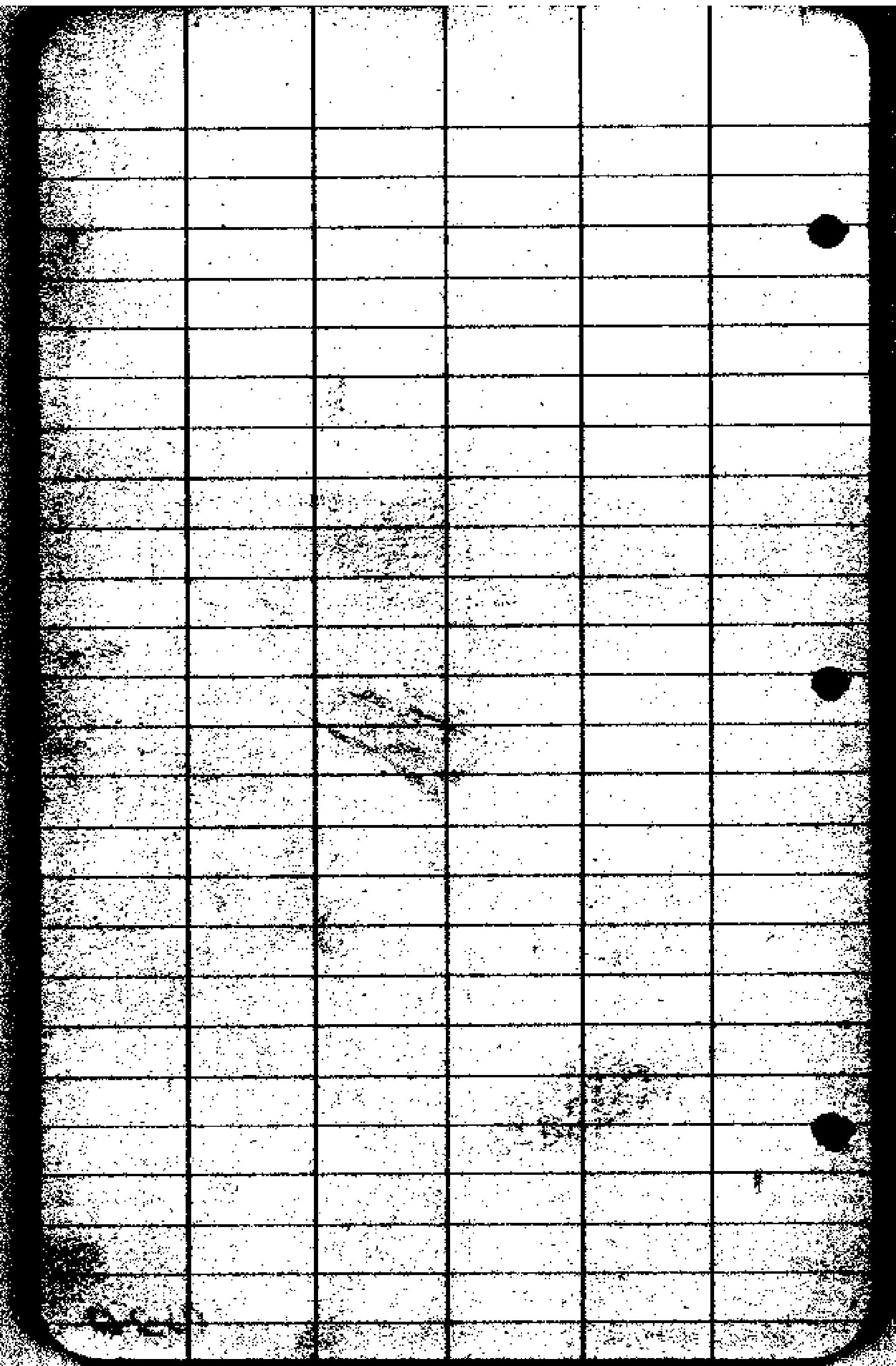
244°

1099B

To Revenue of Los State

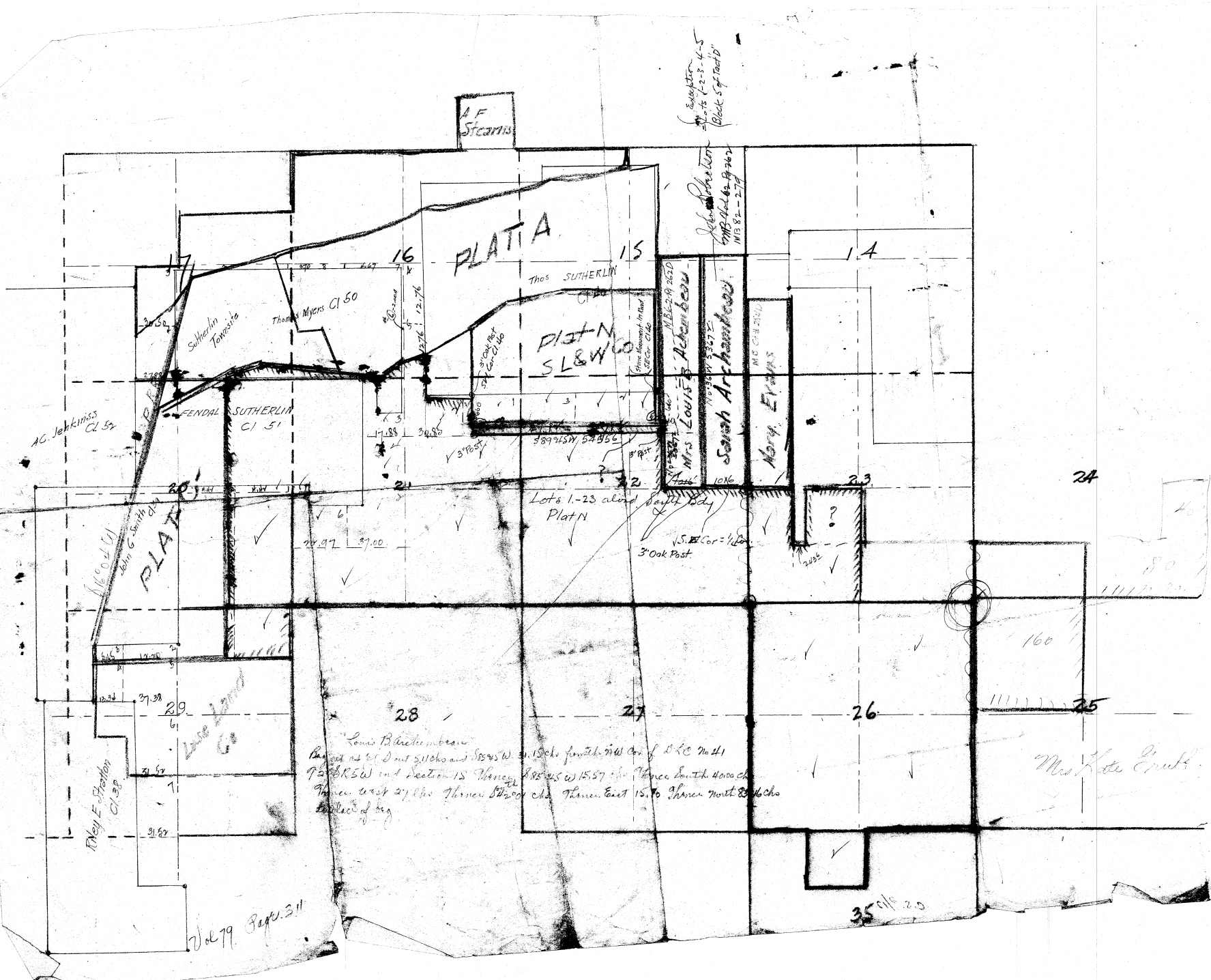
DE Cor of Horn on Plate 2

1099B



A F STEARNS

Exempt
Notes 2-2-4-5
Block 5 of Plat B



PLAT A

PLAT N
S L & W

PLAT G

PLAT L

PLAT M

PLAT O

PLAT P

PLAT Q

PLAT R

PLAT S

PLAT T

PLAT U

PLAT V

PLAT W

PLAT X

PLAT Y

PLAT Z

PLAT AA

PLAT AB

PLAT AC

PLAT AD

PLAT AE

PLAT AF

PLAT AG

PLAT AH

PLAT AI

PLAT AJ

PLAT AK

PLAT AL

PLAT AM

PLAT AN

PLAT AO

PLAT AP

PLAT AQ

PLAT AR

PLAT AS

PLAT AT

PLAT AU

PLAT AV

PLAT AW

PLAT AX

PLAT AY

PLAT AZ

PLAT BA

PLAT BB

PLAT BC

PLAT BD

PLAT BE

PLAT BF

PLAT BG

PLAT BH

PLAT BI

PLAT BJ

PLAT BK

PLAT BL

PLAT BM

PLAT BN

PLAT BO

PLAT BP

PLAT BQ

PLAT BR

PLAT BS

PLAT BT

PLAT BU

PLAT BV

PLAT BW

PLAT BX

PLAT BY

PLAT BZ

PLAT CA

PLAT CB

PLAT CC

PLAT CD

PLAT CE

PLAT CF

PLAT CG

PLAT CH

PLAT CI

PLAT CJ

PLAT CK

PLAT CL

PLAT CM

PLAT CN

PLAT CO

PLAT CP

PLAT CQ

PLAT CR

PLAT CS

PLAT CT

PLAT CU

PLAT CV

PLAT CW

PLAT CX

PLAT CY

PLAT CZ

PLAT DA

PLAT DB

PLAT DC

PLAT DD

PLAT DE

PLAT DF

PLAT DG

PLAT DH

PLAT DI

PLAT DJ

PLAT DK

PLAT DL

PLAT DM

PLAT DN

PLAT DO

PLAT DP

PLAT DQ

PLAT DR

PLAT DS

PLAT DT

PLAT DU

PLAT DV

PLAT DW

PLAT DX

PLAT DY

PLAT DZ

PLAT EA

PLAT EB

PLAT EC

PLAT ED

PLAT EE

PLAT EF

PLAT EG

PLAT EH

PLAT EI

PLAT EJ

PLAT EK

PLAT EL

PLAT EM

PLAT EN

PLAT EO

PLAT EP

PLAT EQ

PLAT ER

PLAT ES

PLAT ET

PLAT EU

PLAT EV

PLAT EW

PLAT EX

PLAT EY

PLAT EZ

PLAT FA

PLAT FB

PLAT FC

PLAT FD

PLAT FE

PLAT FF

PLAT FG

PLAT FH

PLAT FI

PLAT FJ

PLAT FK

PLAT FL

PLAT FM

PLAT FN

PLAT FO

PLAT FP

PLAT FQ

PLAT FR

PLAT FS

PLAT FT

PLAT FU

PLAT FV

PLAT FW

PLAT FX

PLAT FY

PLAT FZ

PLAT GA

PLAT GB

PLAT GC

PLAT GD

PLAT GE

PLAT GF

PLAT GG

PLAT GH

PLAT GI

PLAT GJ

PLAT GK

PLAT GL

PLAT GM

PLAT GN

PLAT GO

PLAT GP

PLAT GQ

PLAT GR

PLAT GS

PLAT GT

PLAT GU

PLAT GV

PLAT GW

PLAT GX

PLAT GY

PLAT GZ

PLAT HA

PLAT HB

PLAT HC

PLAT HD

PLAT HE

PLAT HF

PLAT HG

PLAT HH

PLAT HI

PLAT HJ

PLAT HK

PLAT HL

PLAT HM

PLAT HN

PLAT HO

CS FILE FOLDER

CONTAINS

MORE

INFORMATION