

MAP OF

SUB-DIVISION of SEC. 5-T.30S.-R.5W.-W.M.

DOUGLAS COUNTY, - OREGON.

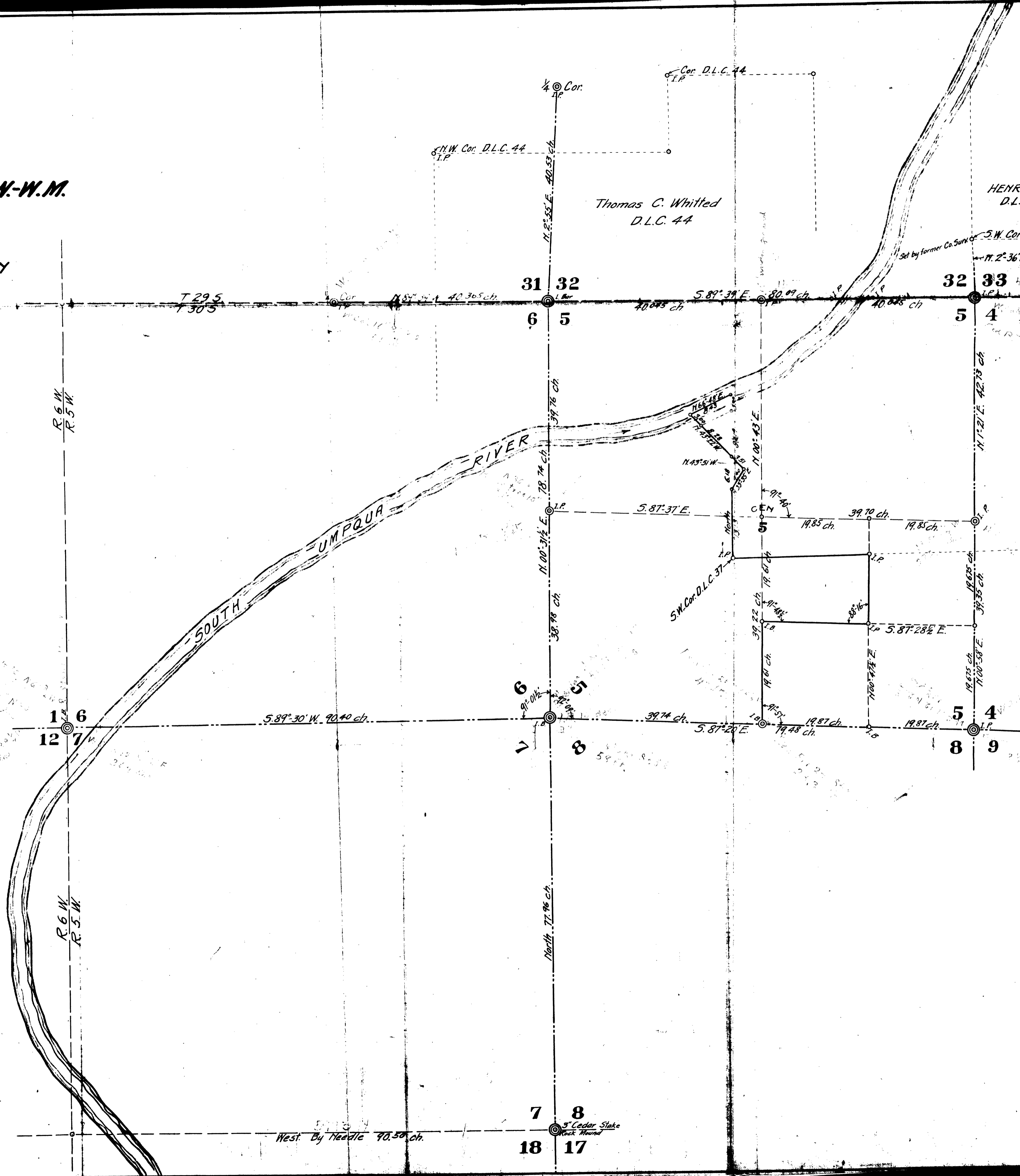
AND

ESTABLISHMENT OF LINES BETWEEN THE ESTATES OF JOHN R. WEAVER AND WILLIAM WEAVER (Deceased)

Surveyed by M.B. Germond C.E. Co. Surveyor, Feb. 1918.



Scale 1 inch = 10 chains



Thomas C. Whitted
D.L.C. 44

HENRY ADAMS
D.L.C. No 42

31 32
6 5

32 33
5 4

1 6
12 7

11 6
5 8

5 4
8 9

7 8
18 17

West By Needle 90.50 ch.

5 Cedar Stake
Rock Found

C.S. File No. 1/65-A Marks & Wolleneers 4 29 & 30 S R 5 & 6 W
Secs. 31, 6, 7, 1, 12- Legal Survey to establish lines on Chadwick Ranch
W of So. Impqua River- Ben B. Irving Dep. Co. Surveyor- Apr & May 1929
Recorded Vol 3 p 294-296

C.S. 1/65-A-3	MAP FILE M 1-61
C.S. 1/65-A-2	" M 1-49
C.S. 1/65-A-1	" M 22-63

(SEE ALSO 165-B)

C.S. 1/65A contains copies of the above maps.
Plus computations for the survey

12

0-0

CS FILE FOLDER

CONTAINS

MORE

INFORMATION