

66

1.5
5.9
6.1
3.1

79.2 39.2

S 1° 43' E

①

T 265 R. SW

Tom Dixon

D.L. (# 41)

Began at SW. cor D.L. (# 41)

Find 2 O.B.Ts. Badly decayed

Set 3/4" G.I.P. Marked

20" B.O. S 41 1/2° E 53 ft

8" B.O. N 41 1/2° E 48 ft

I.H. Short, Tom Dixon witnesses

cor

9 1/2 248<sup>5</sup> N 76° 50' E N 76° 50' E

1

10° 30' L 5 1/2 16° 250° 213 40° N 63° 10' E N 66° 20' E

2

23° 36' R - 62<sup>2</sup> N 85° 2' E N 89° 56' E

3

80° 06' R S 5° 10' E S 9° 58' E

A

Set B site "A" S 77° W N 75° 55' E  
11° 51' R

1'

13

20° 31' R 583° 33E

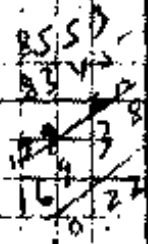
2

set 2. site B  
20° 29' L 15° 10 77<sup>2</sup> N 78° E N 75° 58' E

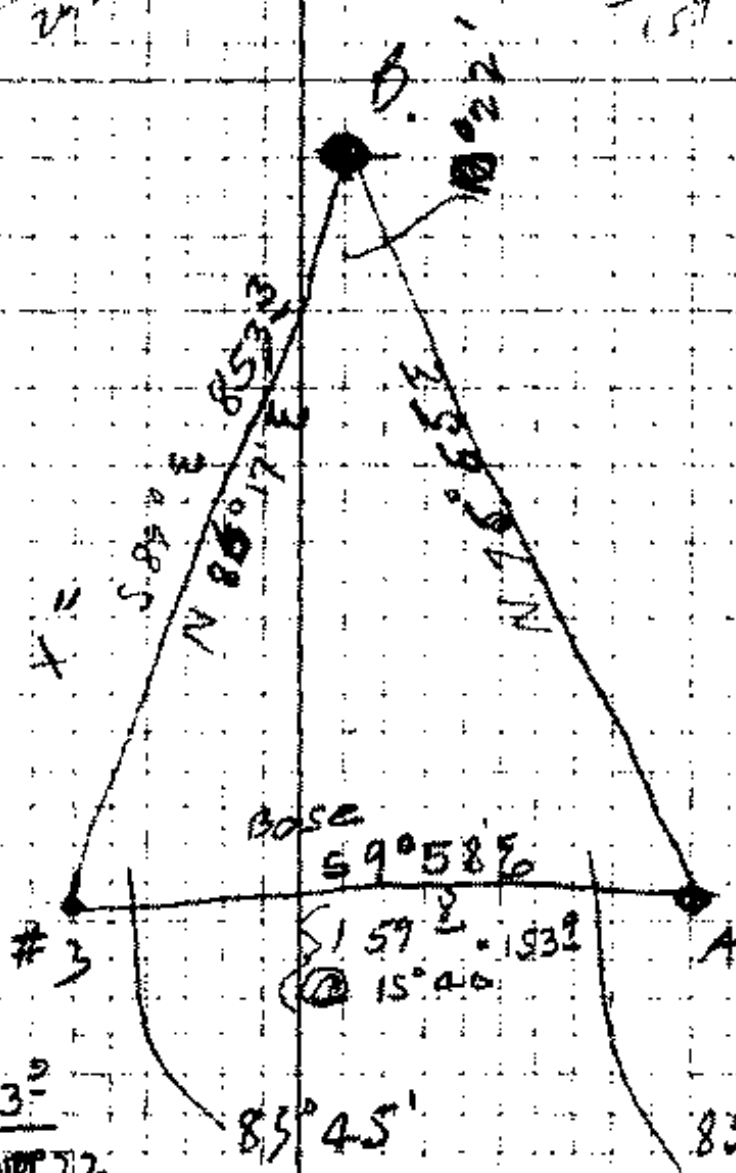
3

$$\frac{299}{2152}$$

$$\frac{2398}{80}{1598}$$

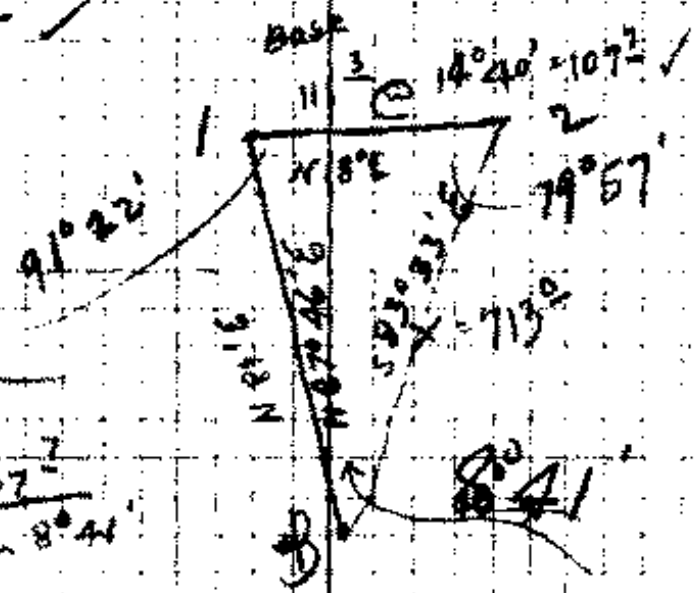


245 ✓  
 248.4  
 204.8  
 40.2  
 62 ✓



$$x = \frac{153}{\sin 85^{\circ}53'} = 853 \checkmark$$

85°45'      85°53'



$$\frac{20'31"}{11'51"} = 2.40$$

75 ✓  
 $x = \frac{107}{\sin 8^{\circ}41'}$   
 $x = 713$

25/56

(2)

3

13°10' R 26°20' 705<sup>L</sup> 589<sup>1/2</sup> E N75°58' E

4

0°55' L 14 1/2 234<sup>L</sup> 583<sup>2/3</sup> E 589°57' E

5

8°27' L 9° 145<sup>L</sup> N87°16' E N81°36' E

6

4°01' L - 300° ~~583°~~ 25<sup>L</sup> N82° E N77°35' E

\* 7

Tie to Cemetery

88°45' L 18° 175° N3° W N11°10' W

8

32°51' R 9 1/2 202<sup>S</sup> N24°50' E N81°31' E

9

2°39' L - 89° N25°2' E N19°02' E

10

9<sup>L</sup> N73° E N67° E

SW  
Cof. Cem.

I. Pipe

Marked a 8" B.O.S 48° E 26° ±

Continue

N77°35' E

\* 7

6°05' R 13 1/2 147<sup>L</sup> 588<sup>2/3</sup> E N83°40' E

8

299<sup>6</sup> 1-56  
②

237<sup>7</sup> ✓

226<sup>9</sup>

143<sup>9</sup>

325<sup>7</sup>

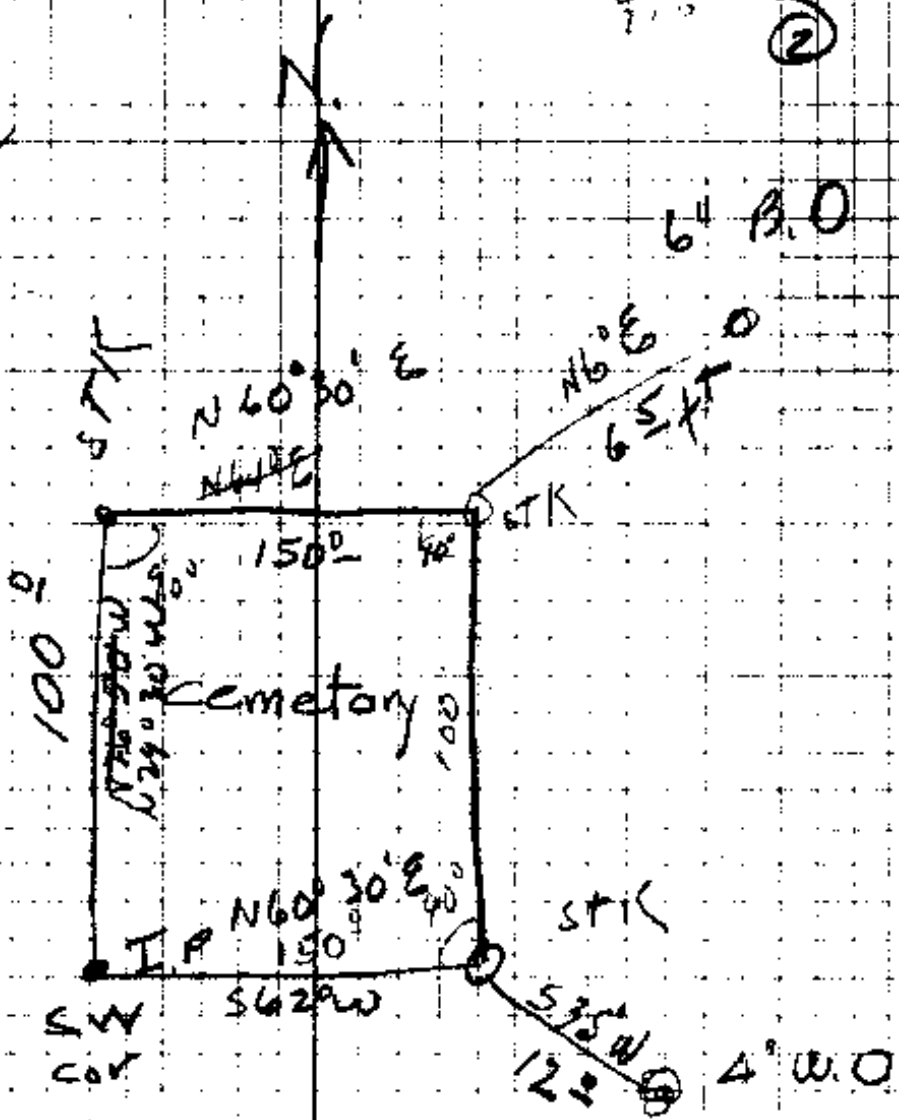
166<sup>2</sup>

200<sup>2</sup>

89<sup>6</sup>

97

143<sup>8</sup> ✓



c.s. 1/56

3

8

9° 18' L 20° 45' 2168° N 84° E N 83° 40' E N 74° 22' E

9

39° 30' R 11° 40' 1158° 561° E 566° 18' E

10

23° 32' L - 172° 584° 40' E 589° 50' E

11

4° 15' L 19° 165° 589° 50' E N 85° 55' E

12

1° 01' L 10 1/2 129° 588° E N 84° 54' E

13

1° 44' R - 71° N 86° 38' E

14

4° 15' R 13 1/2 189° 584° 2' E 589° 07' E

15

4° 28' R 15° 92° 576° E 584° 39' E

16

19° 40' L 11° 40' 300° 171° N 83 1/2° E N 75° 41' E

17

~~118° 19' L~~ ~~674~~ N 36° 35' W = N 42° 38' W

Tie line for Bedding

8° 53' R 7° 230° 589° E N 84° 39' E

18

6° 53' L 6° 300° 186° N 81° E N 77° 41' E

19

250<sup>6</sup> ✓

• 113<sup>3</sup> ✓

172<sup>0</sup>

156<sup>6</sup> ✓

126<sup>8</sup> ✓

• 71<sup>0</sup>

183<sup>2</sup> ✓

89<sup>2</sup> ✓

229<sup>30</sup>  
171<sup>7</sup>

Solar.

= S 34° 39' E Var = 7° E.

• 229<sup>0</sup> ✓

300<sup>0</sup>  
185<sup>2</sup>

(4)

19

19°09' R

241<sup>6</sup>

580' 10" E

N77°41' E

S83°10' E

20

Thence North

78°08' L

101<sup>2</sup>

N23°2' E

N18°43' E

21

~~70°45' L~~

N11°36' E

~~21~~

21-

13' 15"

N10°10' E

N5°28' E

22

set 22 site A Base

67°26' R

11°40'

232<sup>0</sup>

N76° E

A

N74°51' W

23

site

A

11°05' R

5°

300<sup>2</sup>  
69<sup>7</sup>

N12°2' W

N13°46' W

24

0°05' L

3

205<sup>5</sup>

N13°20' W

N13°51' W

25

1°01' R

6°

280<sup>4</sup>

N19° W

N12°50' W

26

7°02' R

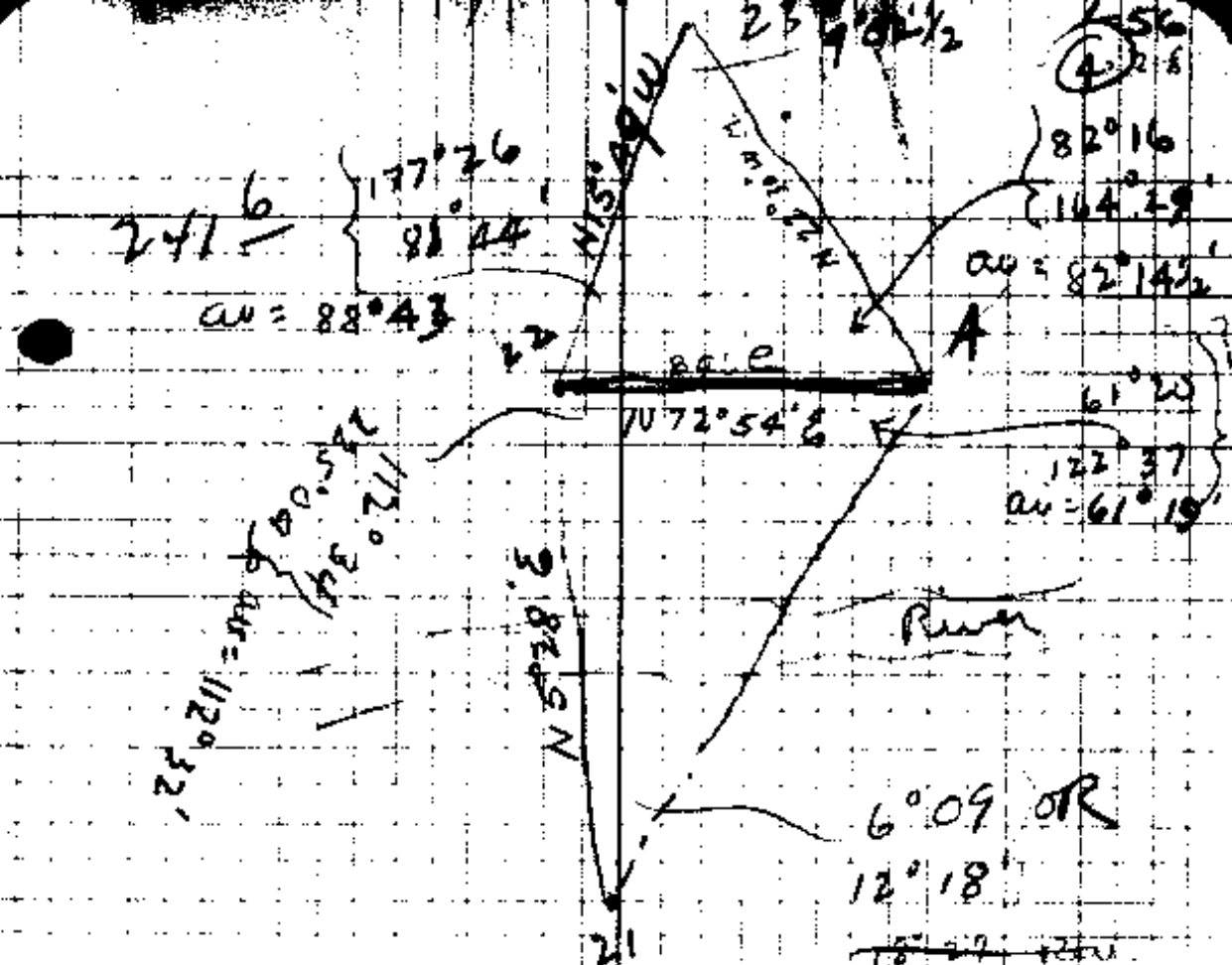
14 1/2  
15 50

67<sup>8</sup>  
300<sup>2</sup>  
70<sup>-</sup>

N15° W

N5°48' W

27



● 227<sup>3</sup> ✓

$$\frac{21 - 22}{\sin 61^{\circ} 19'} = \frac{227^3}{\sin 6^{\circ} 09'}$$

$$368^6 \times = 1984^5$$

$$\frac{205^2}{22 - 23} = \frac{227^3}{\sin 9^{\circ} 02 \frac{1}{2}'} = 1432^9$$

● 478<sup>9</sup>  
 154  
 598 ✓  
 90

24  
 23  
 678

⑤

27

N5°48'W

2°15' L

12°

91<sup>0</sup>/<sub>2</sub>

N7°W

N8°03'W

To point 2° East. of N66°

D.L.C # 47.

Drove I.P. from 2 A.B.T's.  
Marked

24" B.O. N51°E 52<sup>1</sup>/<sub>2</sub>

24" B.O. S70°W 107<sup>1</sup>/<sub>2</sub> O.B.T.

Tom Dixon, C. Crocker Witness

300<sup>2</sup>  
216

4°

N18°43'E

Set 20 side 21

Turn left 36°08' interior L.

62<sup>0</sup>/<sub>2</sub> ft N 2<sup>1</sup>/<sub>2</sub>° W N17°25'W

Drove I.P.

8" W.O. N64°W 66<sup>0</sup>/<sub>2</sub> ft

10" W.O. N32°E

12" B.O. N67°E 62<sup>0</sup>/<sub>2</sub> ft

CS FILE FOLDER

CONTAINS

MORE

INFORMATION