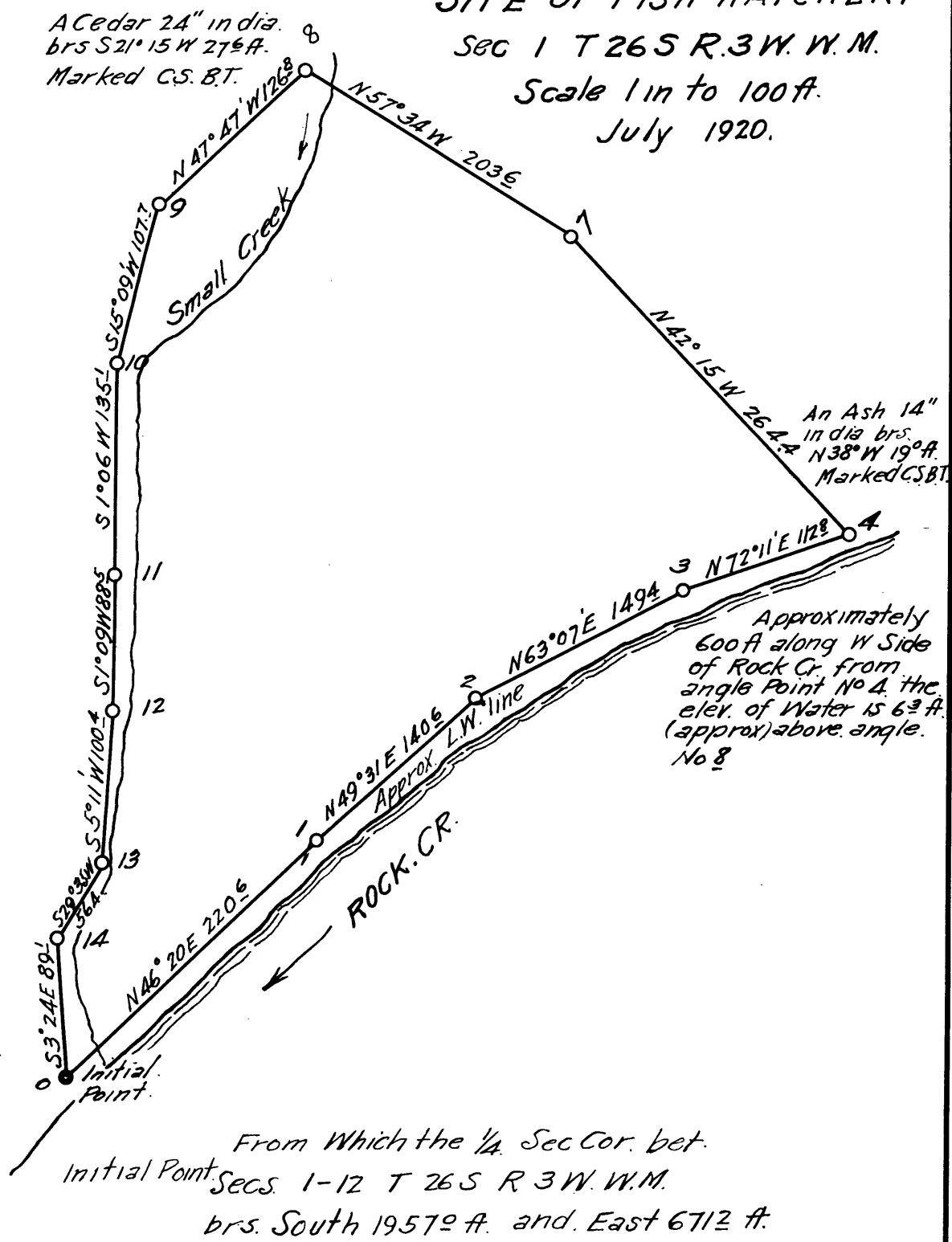


MAP OF TRACT  
 Proposed for  
 SITE OF FISH HATCHERY  
 SEC 1 T 26 S R. 3 W. W. M.  
 Scale 1 in to 100 ft.  
 July 1920.

Kendall Lbr. Corporation.



A fir 24" in dia.  
 S55° 30' W 19.8 ft.  
 Marked. C.S. B.T.

Surveyors Certificate.  
 I, J.W. COLE Deputy County Surveyor of Douglas County Ore. hereby certify that I have Surveyed and Marked on the ground, the tract of land as shown on the above plat.

J. W. Cole.  
 Deputy Co. Surveyor.

CS FILE FOLDER

CONTAINS

MORE

INFORMATION