

Kimmel - De Bernardi
Survey.

926 R3

Survey for Dr Bernidi

0 Solar Obs. near Cor 2-3

10-11

July 9 5³⁰ PM

#1 FS Trec R 153°47 MC N 80°W

AH 23°21 #2 R 154°48 MC N 74°W

AH 22°14

0

South

Solar obs
51°03E

-12°15'

145°

142⁶

#1

South

-2°

4235

283⁶

2808

#2

Bearings

-11°30'

141^L

138^L

#3

-14°30'

203²

196⁵

#4

Note
TURN all
1003' L for True
Bearings

-12°00'

300°

293⁵

-3°

300°

299.7

271³

271^L

#5

-9°30'

300°

295.9

-7°10'

300°

297.7

-5°

300°

298.9

#6

284⁴

284^L

From
 true line R $53^{\circ} 21'$

$352^{\circ} 23'E$
 R $53^{\circ} 20'$
 D $10^{\circ} 03'E$

H₀ $513^{\circ} E 16'$ from fence Cor - $515^{\circ} E 3'$

Solar Comput

Dec Sun. - - July 9/23 $22^{\circ} 27' 28''$
 $3 53''$
 Dec Sun at 5:30 PM $22^{\circ} 23' 35''$ ✓
 Lat. of Base Line $45^{\circ} 31'$
 $2^{\circ} 11'$
 Lat. of Obs. $43^{\circ} 20'$
 Meas Alt. $23^{\circ} 21'$
 Refr $1'$
 True Alt. $23^{\circ} 20'$

$\tan 23^{\circ} 20' = 4314$ $\cos 23^{\circ} 20' = 9182$ ✓
 $\tan 43^{\circ} 20' = 9485$ $\cos 43^{\circ} 20' = 7074$
 4070
 5706
 1630 $\sin Dec = 3807$
 $6679 = 5706$

$1234 24'$
 $180 00$
 $5 54 24'E$
 $5 54 24'$

$Q = N 80^{\circ} 35' W$
 $153 48'$
 $53 42'$

#6		South			292.9
#7 = 3092 E		S1°30 E			248
#8 = 3127 ³				+7°30	
				87.9	87 L
#9 = 3214 ⁴		S1°30 E			
				176 ⁴	176 ⁴
#10 ^{3390B}				+18°	
		S1°00 E		170 ⁷	162 ³
#11 3553 ¹				+11°	
				108 ³	106 ⁴
#12 ^{3695.7}				+22°45	
				178 ⁸	164.9
#13 ^{3860.9}				+11°	
				204 ⁰	200 ²
#14 ^{4060.2° #1} L1°22'		S2°30E	S1°20E	+15°	
				119 ³	115 L
#15 ^{4176.2° 26'} L1°13'		S3°45E	S2°33E	+28°50'	
				120 ⁶	105 ⁶
#16 ^{7°06'} R3°33'		S0°15E	S1°00W	+14°00'	
				144 ⁵	140 ³
#17 ^{10°17'} L0°39'		S0°45E	S0°21W	+22°	
				135 ⁴	125 ⁵
#18 ^{3°09'} R1°34'		S0°45W	S1°55W	+7°45	
				160 ⁰	158 ⁶
#19					

#19	350 L1°55'			1105	
	31°08'	S1°00'E	South	1965	1965
#20	R17°04'				
	56°32'	S16°15'W	S17°04'W	+17°00'	286.9
#21	L28°18'			300°	6.6
				+6.6 Horiz	293.5
		S12°00'E	S11°12'E	+5°23'	
#22	40°31' R2°15'			129°	1284
		S10°30'E	S8°57'E	-2°33'	
				150	150

Sec Cor
12-15-10-11

#19 - #20 Creek 146

#19 - #20 Line Tree 116 and 10' R

#20 Line Tree N 10' and 15' R

This cor established on same previous survey and an iron pipe driven.

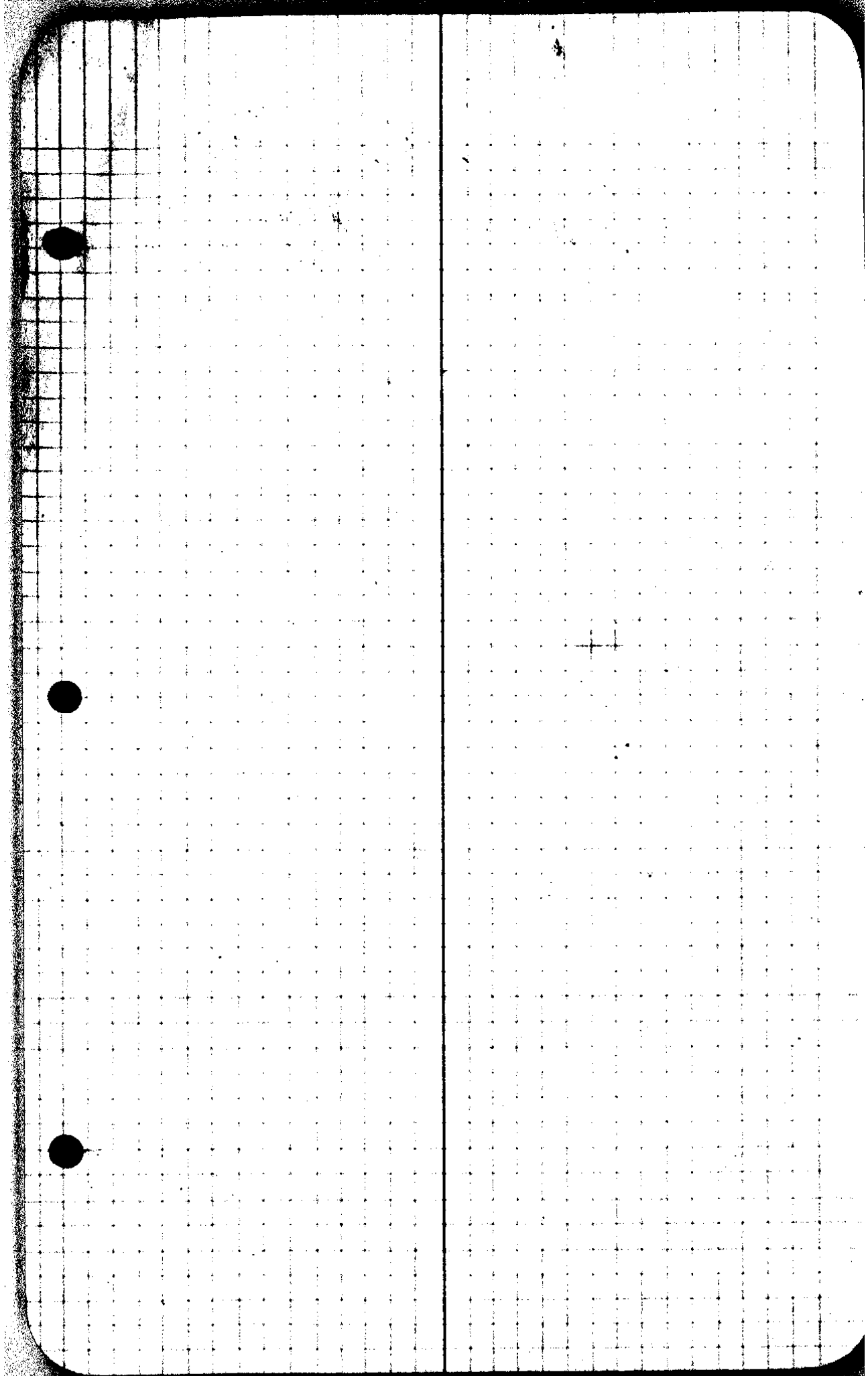
From Post # 6 go East 28.3 ft
and set witness corner 10 ft
North of True 1/4 Cor (Drove and iron pipe 5" x 3"
from which 36" Norway Pine
bears N 37° E 60.6 ft
7 in 40" N 74° 45' W 92.8 ft

True cor over bank of River
Corner located by testimony of W.A.
Smith also on line of old bluffs
found South

Line A

Began at 1/4 Cr bet 2 & 11
 1/2 Cr Mound of Rock & Stake
 also B.T. nearly dead.
 all Mag.

A*0 = 1/4		N 89° 00' W 588° 09' E	896	896
A*1	3° 57' ✓ L 1° 29'	S 89° 30' W 589° 48' E	$\left. \begin{array}{r} +3000' \\ 3002 \\ 57.6 \end{array} \right\}$	2996
A*2	1° 58' ✓ R 0° 58'	N 89° 30' W 588° 49' E	$\left. \begin{array}{r} -3015' \\ 3002 \\ 32.7 \end{array} \right\}$	2996
*3	8° 34' ✓ R 4° 20'	N 85° W 584° 29' E	-18° 00'	1767 ✓
*4	19° 11' ✓ L 9° 39'	S 85° 30' W 585° 01' E	$\left. \begin{array}{r} +12° 20' \\ 1592 \\ +21° 15' \\ 1074 \end{array} \right\}$	1553
*5	5° 28' ✓ R 2° 49'	N 85° 01' E	100.1	
*6	13° 20' ✓ R 6° 40'	S 89° 30' W 589° 48' E	+190' ✓ 3002	3002
*7	L 0° 20' ✓	N 84° 00' W 584° 37' E	+17° 15' ✓ 15215	1456
*8	12° 01' ✓ R 6° 00'	N 84° 15' W 584° 57' E	1026 ✓	1026
*9	24° 46' ✓ L 12° 23'	N 79° 30' W 578° 47' E	$\left. \begin{array}{r} -14° 15' \\ 1802 \\ +18° 30' \\ 502 \\ 67.5 \end{array} \right\}$	1260 474 67.5
*10		N 86° 40' E	2900 ✓	2900



6180
3 55

A Line

10

7°50'
R 3°53'

N 88°00' W S 87°25' E

-20°30'
49.7

46.6

11

11°31'
L 5°45'

S 86° W N 86°50' E

-26°20'
300'

21.7

12

184°43'
R 92°20'

N 10°45' W S 50°50' E

+11°45'
64.8

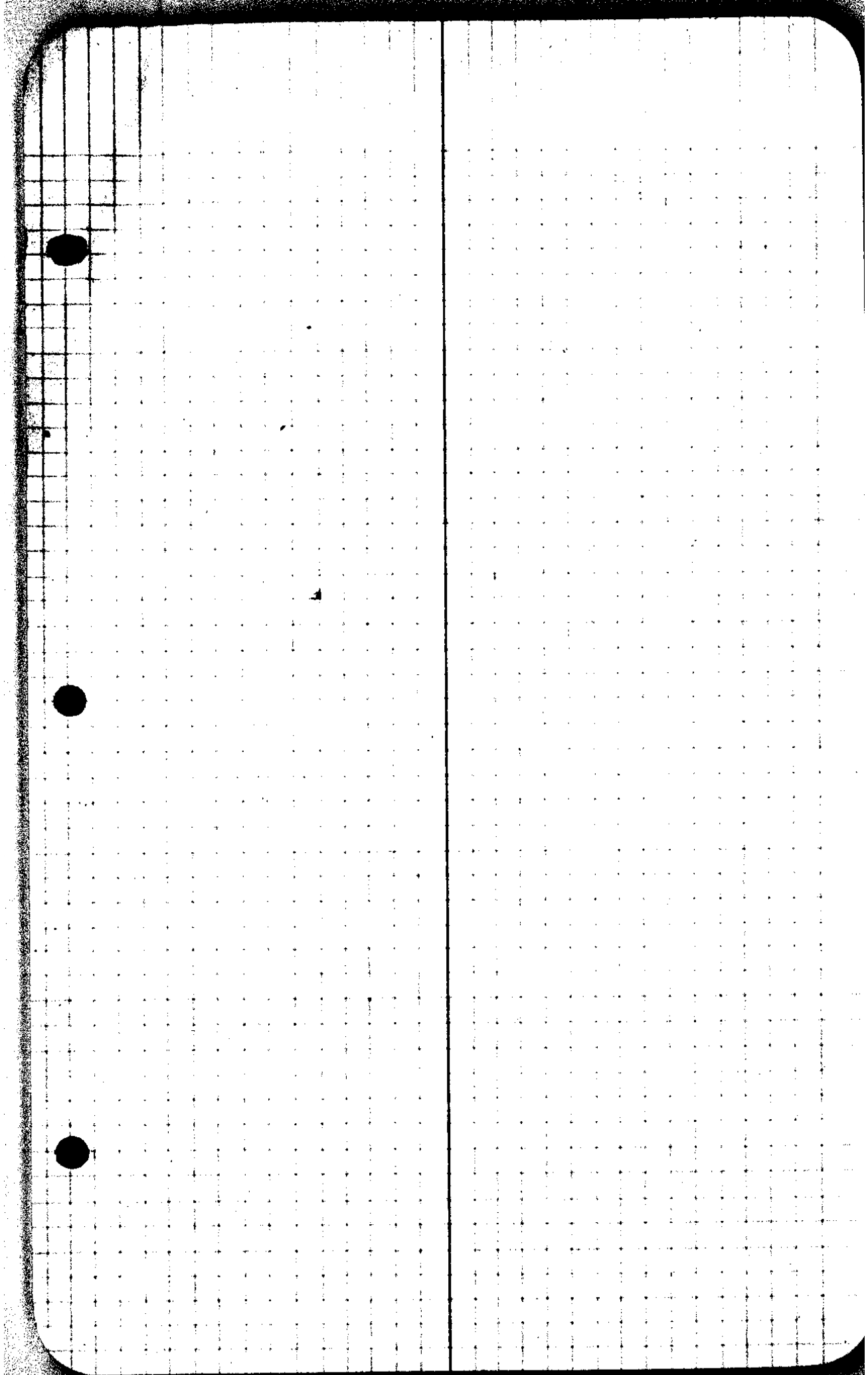
63.4

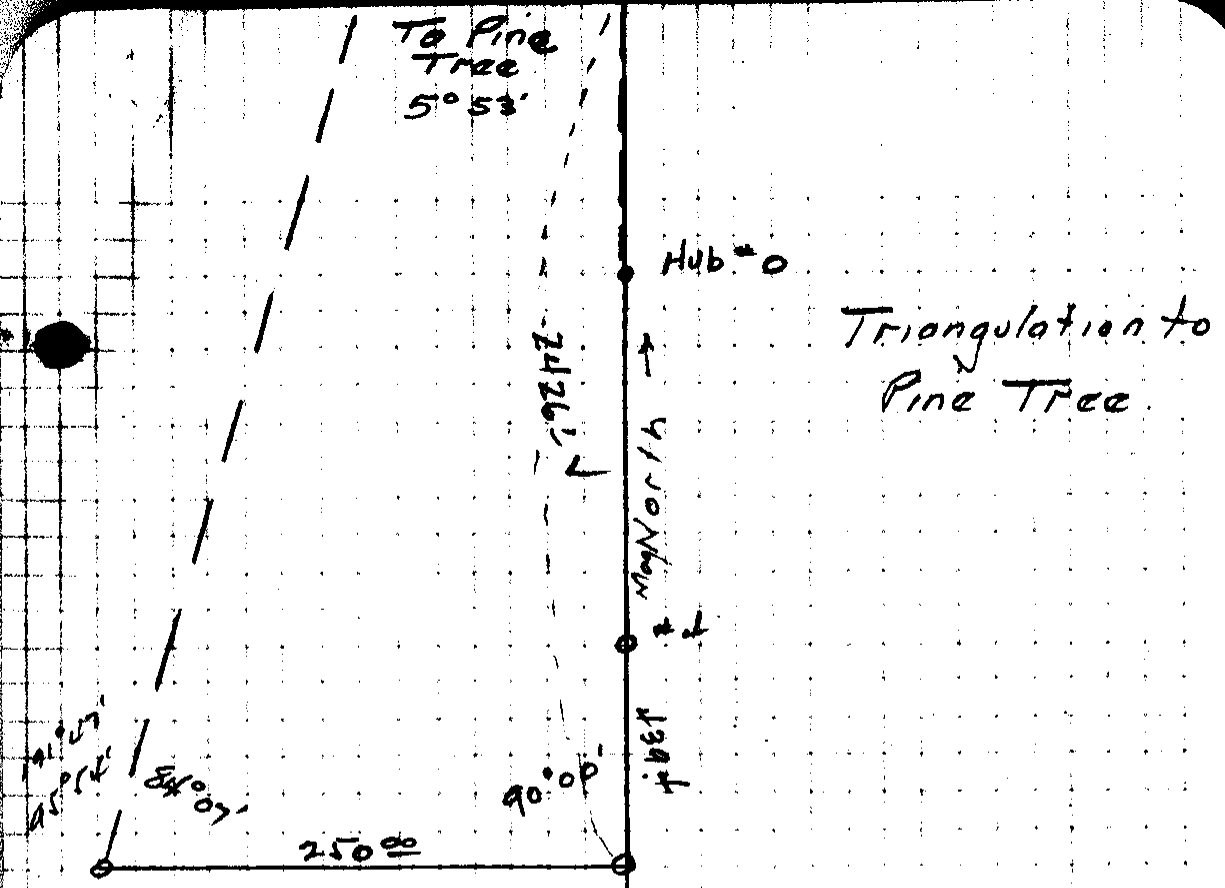
F.S. A # 12

A # 13 = # 0 R 0°50'

South South

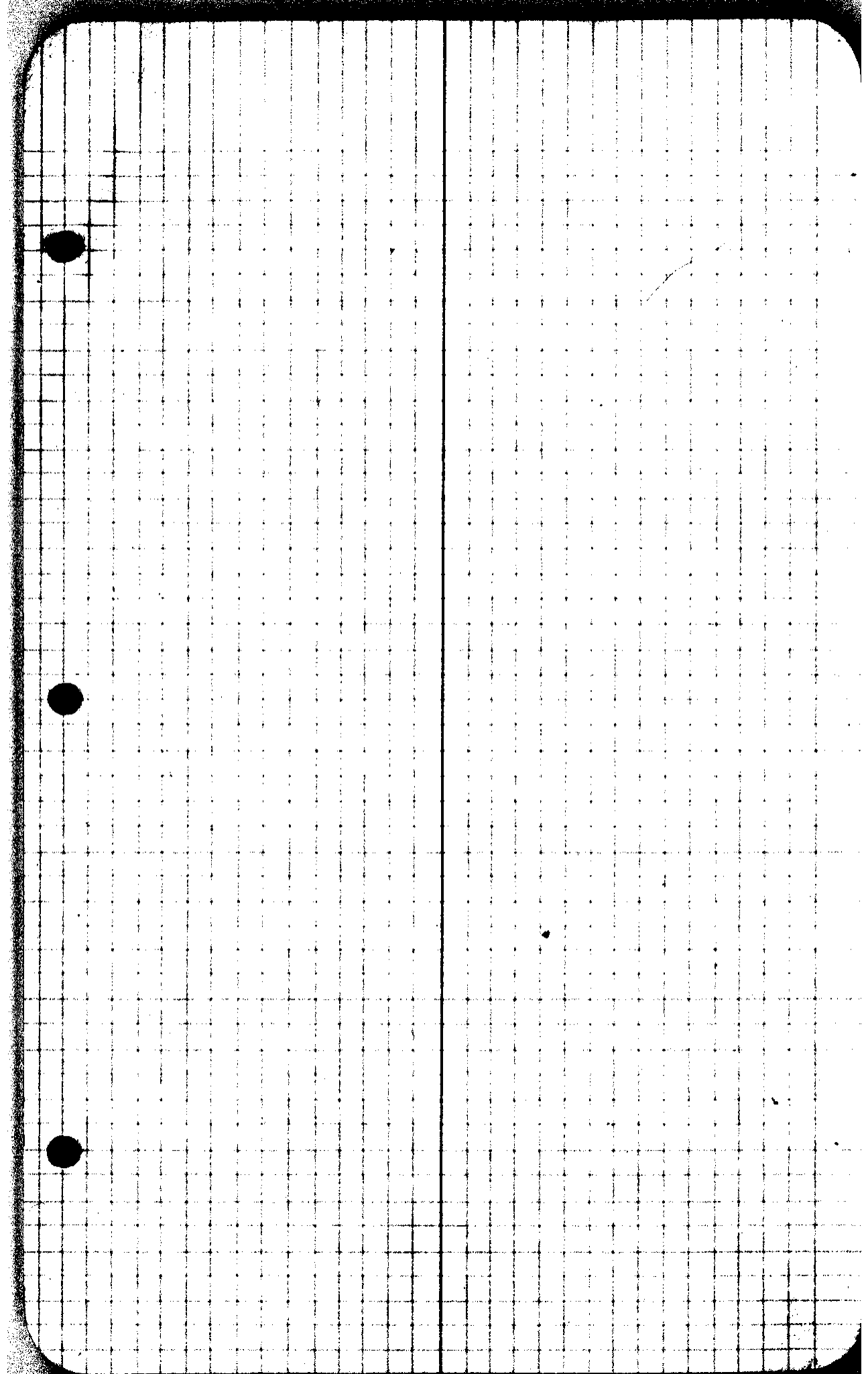
1





B 4 near 1/4 Cor

Set Round boulder 12" dia 6"
 Check S 45° E 50 etc from old
 OT 7 in standing bearing scribe
 marks - Remark also mark
 for S 60° 30' E 42.8 ft.



Hub #5

C Line

North. North ✓

Hub #6 = 90°15'
✓ #0C L45°07'

N45°30'W / N45°07'W ✓

1230.4

3000
+2000'
3000
+2000'
3000
+5000'
1500
+2030
1816

C #1

0°08'
R0°04'

N44°30'W N45°03'W ✓

1071.0

3000
+5030'
3000
+7000'
1600
+5000'
3000
147

C #2

N44°30'W N45°03'W ✓

+3015'
205.8

C #3

0°28'
L0°14'

N45°W N45°17'W ✓

+16034'
2320

C #4

L0°31'
R2°15'

N42°40'W N43°02'W ✓

+19005'
3000
25.3

C #5

30°24'
L1°42'

N44°45'W N44°44'W ✓

+12020
207.5

C #6

300.0 ✓

299.8 ✓

299.8 ✓

149.4 ✓

181.4 ✓

1730.4 ✓

300.0 ✓

298.6 ✓

158.8 ✓

298.9 ✓

14.7 ✓

1071.0 ✓

205.5 ✓

222.4 ✓

283.4 ✓

25.3 ✓

308.8 ✓

202.3 ✓

1730.4 ✓

1071.0 ✓

298.6 ✓

299.8 ✓

299.8 ✓

222.4 ✓

205.5 ✓

202.3 ✓

308.8 ✓

25.3 ✓

283.4 ✓

222.4 ✓

205.5 ✓

1071.0 ✓

1730.4 ✓

C#6 POT.

N45°30'W N44°44'W /

-822

C#7
0°24'
R 0°12'

N46°15'W N44°32'W /

12°37'
300°

C#8 POT.

~~N45°45'~~

33.8

C#9
~~N46°15'~~
R 23°10' 2K.

N45°45'W N44°32'W /

-8°30'

N22°45'W N21°22'W /

133.3

240

1/4 Sec Bet 3 & 10

84 ✓
 292.7 ✓
 338 ✓
 376.5 ✓
 1318 ✓

3240 ✓
 82 ✓
 33226
 3766
 36492
 13188
 378020

240
 Identified when corner from
 a 36° Laurel bearing outer
 marks which bears North
 76 lbs and a Laurel 16"
 which bears S 65° W 37.5 ft
 as against the got field note
 dist of 60 lbs (39.6 ft). Set a
 cedar post square 4' x 4' x 36"
 marked 'at S.B. on N. side 5/10
 on South side & C.S. on West
 side.

De Barnard Reed

Hub #	Angles	Directions	Distances	Sum
# Hub 5		North North		
# Hub #6	193°32' L 96°46'	S 83° W S 83° 14' W	3000 269.8	569.8
# 1	16°08' L 8°04'	S 74° 30' W S 75° 10' W	3000 127.7	427.7
# 2	520°07' R 27°04'	N 79° W N 77° 46' W	220 161.5	381.5
# 3	163°24' L 76°42'	S 27° 30' W S 25° 32' W	300	300
# 4	101°24' L 50°52'	S 24° 30' E S 25° 20' E	71.7	71.7
# 5	POT			
# 6		S 25° 20' E	-13°25' 182.2	177.2
				<u>248.9</u>
# 7	46°25' L 23°12'	N 79° W N 77° 46' W		
# 8	7°13' R 3°37'	S 79° 15' W S 79° 02' W	130 -130.7	
# 9		S 83° 30' W S 82° 39' W	3000 5.9	

Description

5
2
00 58

• ⁴⁴ N. E. Cor Iron Bolt 5 by 1/2 Rd
Co Rd

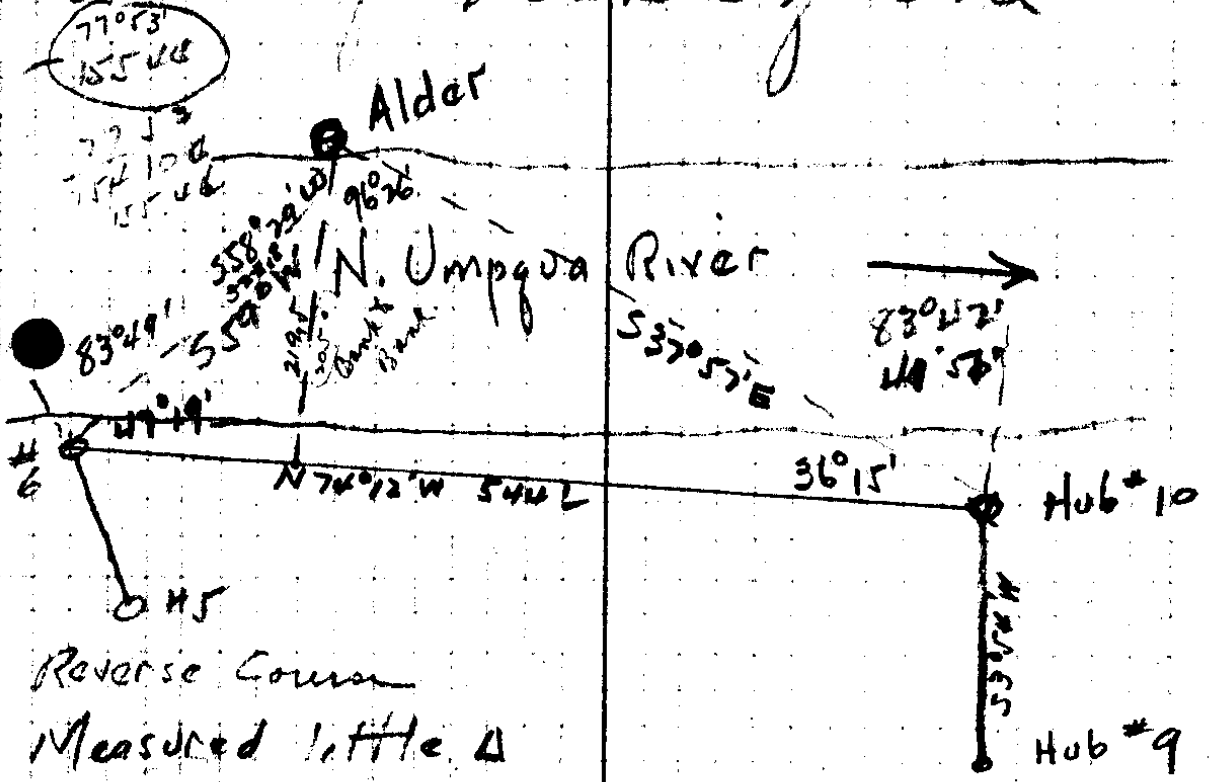
SE Cor for Meander of River

#8	169°05' L84°33'	S82°39'W		
#9	11°35' R5°48'	S1°30'E S1°54'E	40.2	
#10	doubled 102°08'	S55°W S3°54'N	-26°14' 74.4	667 Riv. 12'South
#11	25°038' R12°49'	N81°15'E N81°48'E	38.5	Riv. 22° S
#12	11°08' R5°34'	S86°E S85°25'E	132.4	Riv. 37° S
#13	13°26' L6°43'	S80°E S79°50'E	163.4	Riv. 44° S
#14	178°05' R64°02'	S86°15'E S86°34'E	182.0	Riv.
#6	5°20' L2°45'	S77°E S72°32'E N47°W	-17°53' 41.8	Riv. 15'S
#5		S75°17'W ✓		

7960
 7752
 10208

W cor Iron Bolt S by G Rd
 60 R/W.
 #9

S.W. cor Meander of River



Reverse Course
 Measured little Δ

$$\frac{\sin 36^\circ 15' \times 544.2}{\sin 96^\circ 26'} = \sin 36^\circ 15' \times 544.1 \times \cos 96^\circ 26'$$

.59131
 544.1
 321.73

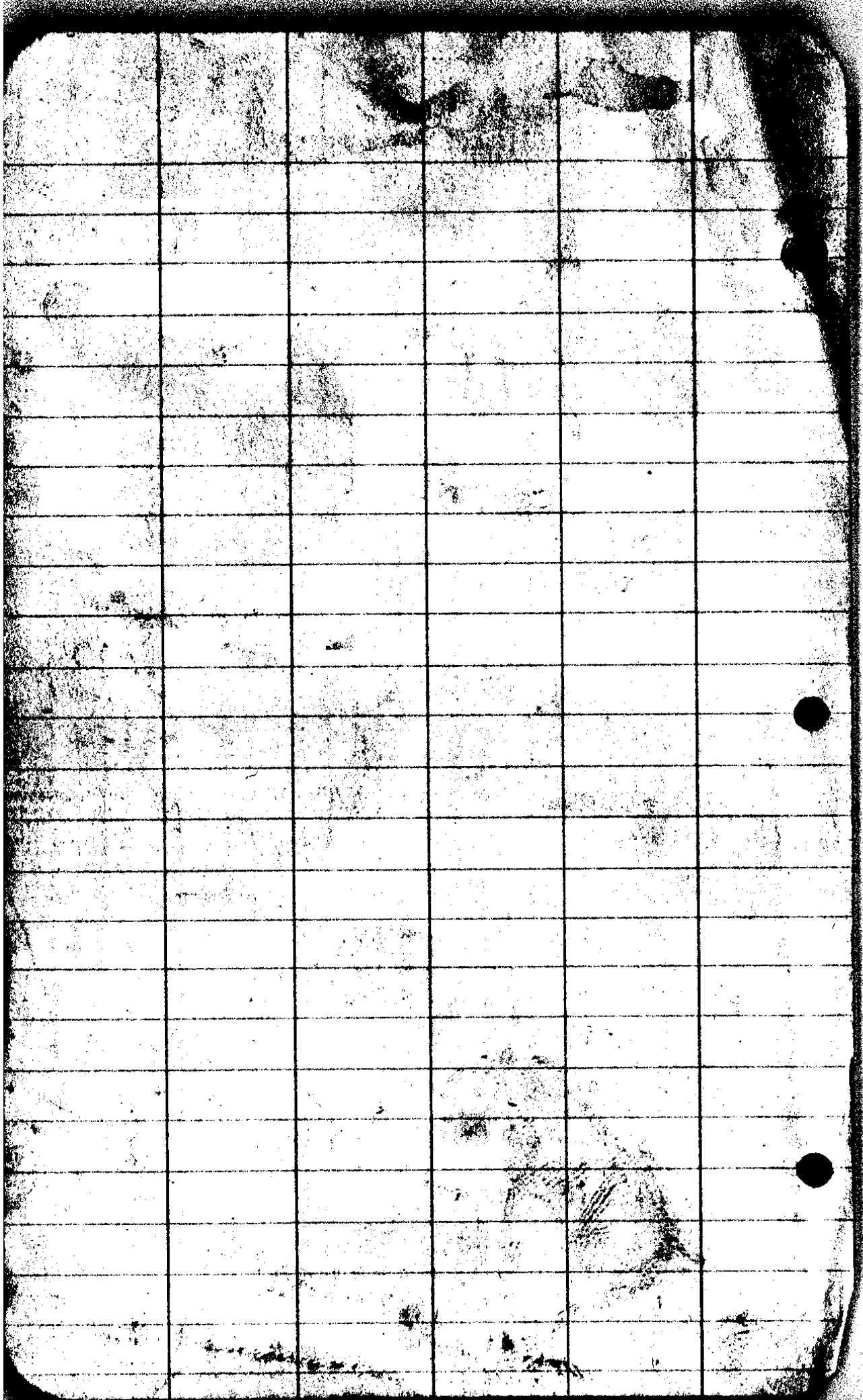
After establishing Sec Cov
to Sec 2-3-10 & 11 T76

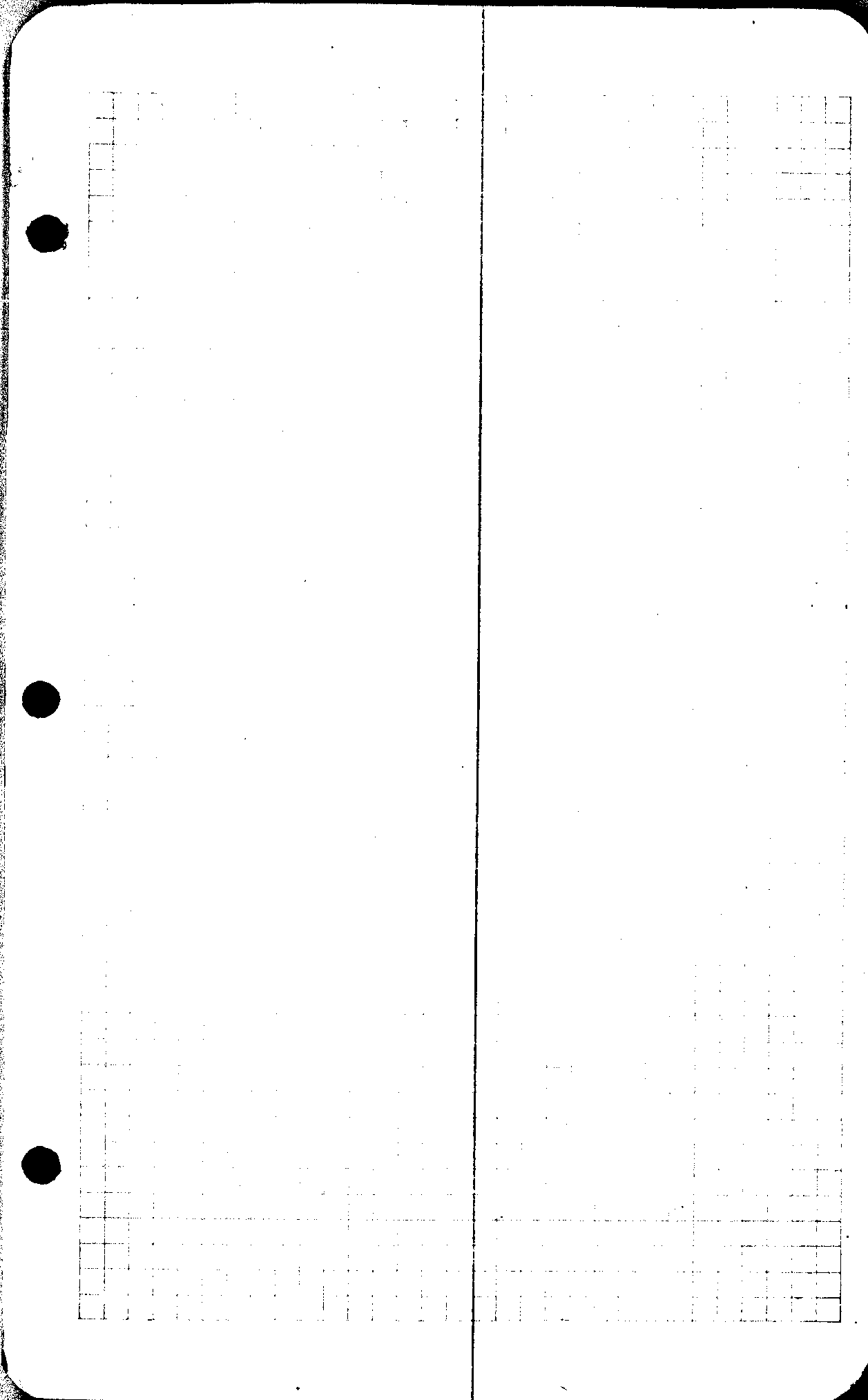
R3 Disproportionate
measurement. I drove an
iron bolt 1" x 24" in the
ground with a piece of
pipe 1 1/2" x 12" around it -
Also made a pile of rock
18" x 18" x 18" for Cov from
which a

10"	Alder	N 15° E	36.2 ft
8"	Fir	N 42° W	77.2 ft.
9"	B. Oak	S 41° 45' E	126.1 ft.
9"	Cedar	S 20° 30' W	97.0 ft

36
172

16° 45'
131.7
- 8° 07'
98.0





Vosburgh
cup co

Cor.

86.4

Δ11

23-30
150⁵

138⁰

Δ10

13-30
82⁰

79⁷

Δ9

2-20
300

57⁰
298³

355⁹

Δ8

137²

Δ7

113⁸

Δ6

5 167³

166³

Δ5

2 240⁴

240³

89-19

East

Δ4

111.6

Δ3

21-45
300 218³
11-30

492.7

Δ2

24
300

274.1

Δ1

11-20
300 163

441.6

1/4 Cor
11

South

H M
T 9.54 10"
25445

H 27°24'
26 25 Aug 9 1930

V 46°38'
47°05"

N 57°63°30'W

T

H

H

V

R

048

Voklung
Copro!

4 west

T

H

2

Voklung
Copro

C.S. 1-40-1

2249
150

2099

Vosburg & Vleck

NW cor.

301³ 6°

Δ B 5

81³ 17°

Δ B 4

74⁶ 30-15

Δ B 3

74⁶ 30-15

Δ B 2

195° 35

Δ B. / North

✕

A / south

211²

90

Δ 2

262⁵

Δ 1

397⁵

90

N 89 W

New corner

3-000'

North

N 80-39 W

Mad 29

Time 4:39:35
Hor 84°32'
Ver 19°32'
Needle 575W

mean -
Time 4-40
Hor 83-55-30
Ver 19'-46'
Lat 43-19'
Long. 123° 2'

void

Time 4:42:50
Hor. 83°19'
Ver. 20°00'
Needle. 75°30'

00B

7546'

2000'

Δ2

7°56'

1/4

on wet line

N 1/2 W

N 1/2 E

92°57'

488°E

20.9

auth pin 150.

360
90
180(17-2)
400

90- 720
180-1

7 36

5 87-53 W

86 3

87-13

247

87-53

178 31

180 57

203

614

179
87

924

896
2996

2438

860
243

2162

71-03
310
75

91
313

7-3 W
129

1285

17
137
154
16
53-10 W

Station	Dist	total 32476	L R	L L	MC	CC
$\Delta 12$ 89.8	73.8		3410 ¹			
$\Delta 11$ 344	270					
$\Delta 10$ 470	296					
$\Delta 9$ 1327	1044					
$\Delta 8$ 1914	1755					
$\Delta 7$ 706	661					
$\Delta 6$ 2082	2045					
$\Delta 5$ 912	864					
$\Delta 4$ 1697	1631	26429		152.2w		
$\Delta 3$ 2479.8w	363.92			426 w		
$\Delta 2$	39.9			(121.9w)		
$\Delta 1$	2076.07			(119.5fatw)	South	

on in
11/12

29°30'

38°

Chimney Tree

512 Bluff

38°

Red Fir

2 24" N 8 W 26'

4 11 Fir 18" S 4 E 47'

23°-30'

20°-30'

Tack on hug between

10°

18°-45' ver

River

16° ver.

61-05'

N 79 E V
126.9

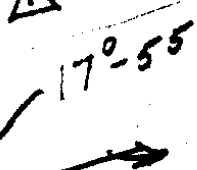
2076.02 feet
South

406'
59°-32' S 59° W

510-20 W

10-37'

75-41



⑦

Sta	Dist	Right Angles	Left Angles	M.C.	G.C.
-----	------	-----------------	----------------	------	------

$\Delta 23$	<u>1276.4</u>				
90° 213	352 2004				

$\Delta 22$					
300° 1150°	329°				
34.5°	245				

$\Delta 21$					
223°	222.9		5		

$\Delta 20$					
	250	10			

$\Delta 19$					
	250		50 0		

$\Delta 18$					
	738				

$\Delta 17$					
72°	57.5				

$\Delta 16$					
1880	145.1				

$\Delta 15$					
781	581				

$\Delta 14$					
	231				

$\Delta 13$					
1295	1159				

$\Delta 12$					
-------------	--	--	--	--	--

20

37°

39°

44°-30'

26°-30'

on stump

(3)

$\Delta 34$
300° 11R 294.5 17-12 N 81 W N 79-36 W

$\Delta 33$
95° 6-45 94.3 12-23 S 83 W S 83-12 W

$\Delta 32$
257² 9.30 254.2 55-43 S 70° W S 70-49 W

$\Delta 31$
75² 18° 72.0 15-06 S 14° W S 15-06 W

$\Delta 30$
84² 13° 82.6 598.1

$\Delta 29$
218² 11° 209.2 5.00

$\Delta 28$
60 10

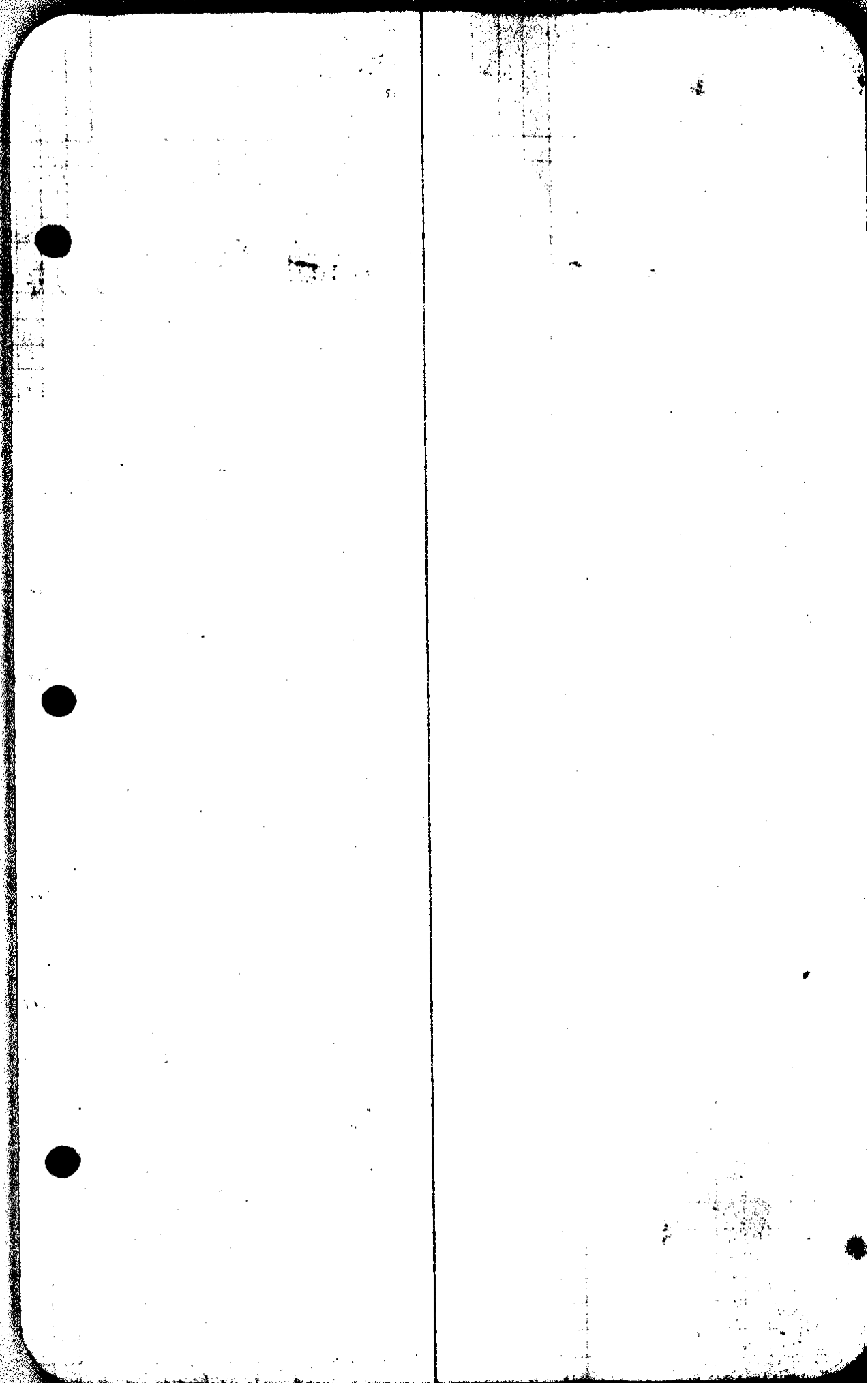
$\Delta 27$
60

26
5° 137° 136.5 5

25
50 10° 5 South

$\Delta 24$
50 50

$\Delta 23$



(4)

Left
Angles

Δ 46
206° 50'

205.2

14-28'

N 8° W N 8-02° W

Δ 45

50

34-06 N 15° E N 15-30° E

Δ 44

306.2

100°-17' N 22° W N 18-36° W

Δ 43

289-20°

271.6 9-06

S 60° W S 61-07° W

Δ 42

311 930

306.7 15-14

S 70° W S 70-13° W

Δ 41

297° 8'

282.2

35-19 S 84° W S 85-22° W

Δ 40

161.6 4-50

~~4~~ S 49° W S 50-08° W

Δ 39

3000 79° 80'

376.1

2-28 S 52-30° W S 54-51° W

Δ 38

125° 32'

124.8 44-55'

S 50° W S 52-30° W

Δ 37

300 64° 15-30'

353.1

26°-33' N 84° W N 82-35° W

Δ 36

211° 30'

210.7

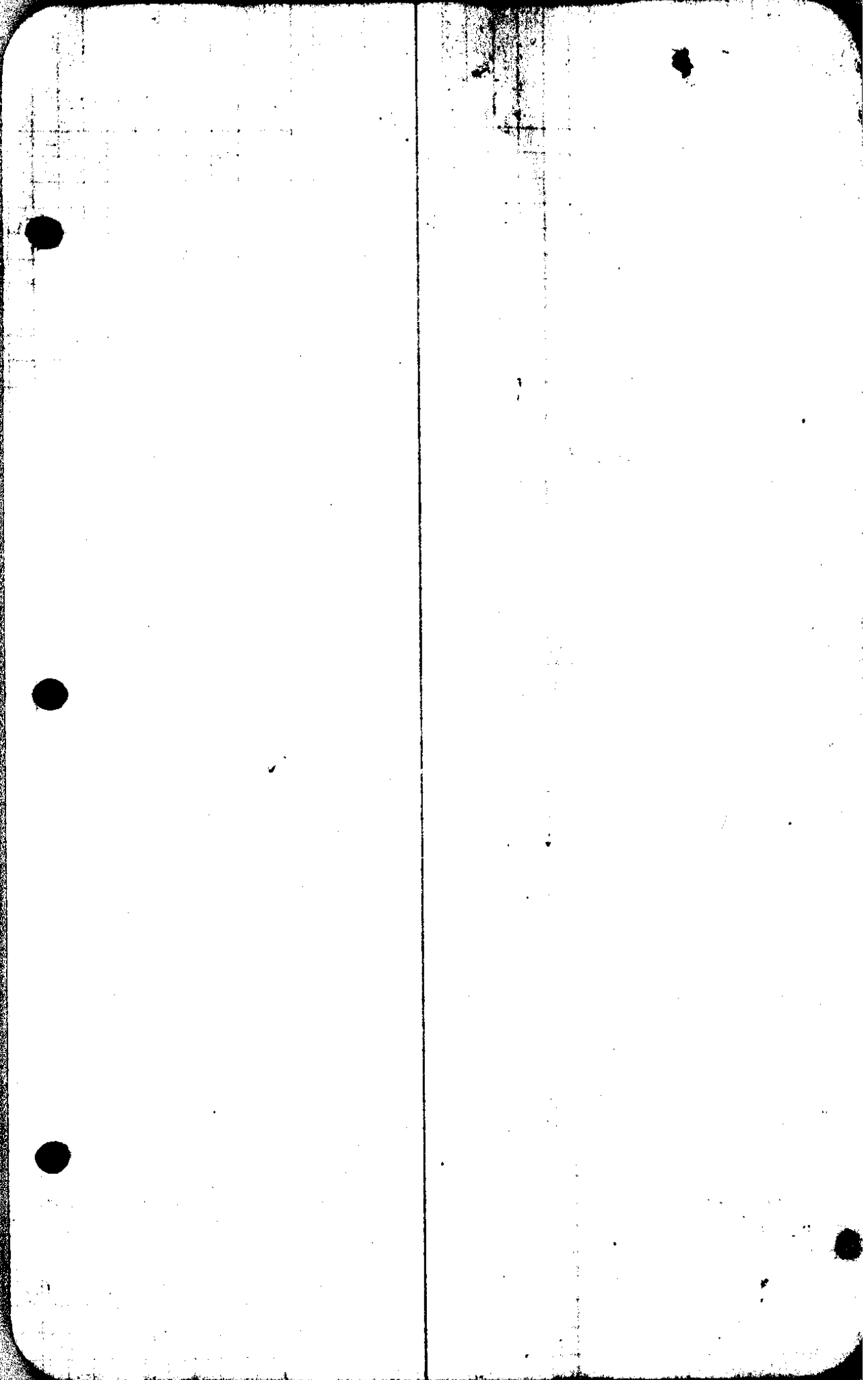
5-50 S 70-30° W S 70-52° W

Δ 35

110.8 35-22

S 65° W S 65-02° W

34



(7)

Δ 5 1254.2

4A 2078

Δ 4

8484

90 East

Δ 3

25 90

North

Δ 2

203

90 East

with
rec
10411

45

90

North

39A on min
100°

1429

90-23

Δ 1

162-430

1615

East

1/4 5/11
40 5/14

#

Cor 10-11
14-15 1620

1726

1655

70-37 N62-30E NE2 E

Δ 47

292 17-30

2785 7°-35'

N9W N80-37W

Δ 46

Turn $2^{\circ}33'$ from Cole
line East

Dist. From 29 to $29A = 33'$

Turned from 30 on $29A$ To $\Delta 1$ on
on line East line from 4 cor

6

596.4

Δ 16
65

65. 20

Δ 15

65°

65.

10.

Δ 15

150 95°

92.5

Δ 14

Measured by BBI
Feb 6 1935

25' 10°

221.7

East

Δ 13

152.2

68°

90

South

Δ 12

130.3
90

201.4

200°

East

Δ 11

25

90

South

Δ 10

197.6 33°

197.2

48.2
197.2
64.2
284.1
213.5
349.3
25

Δ 9

64.2

64.8 40°

284.1

Δ 8

214 40°

213.5

Δ 7

349.3

90

East

Δ 6

25

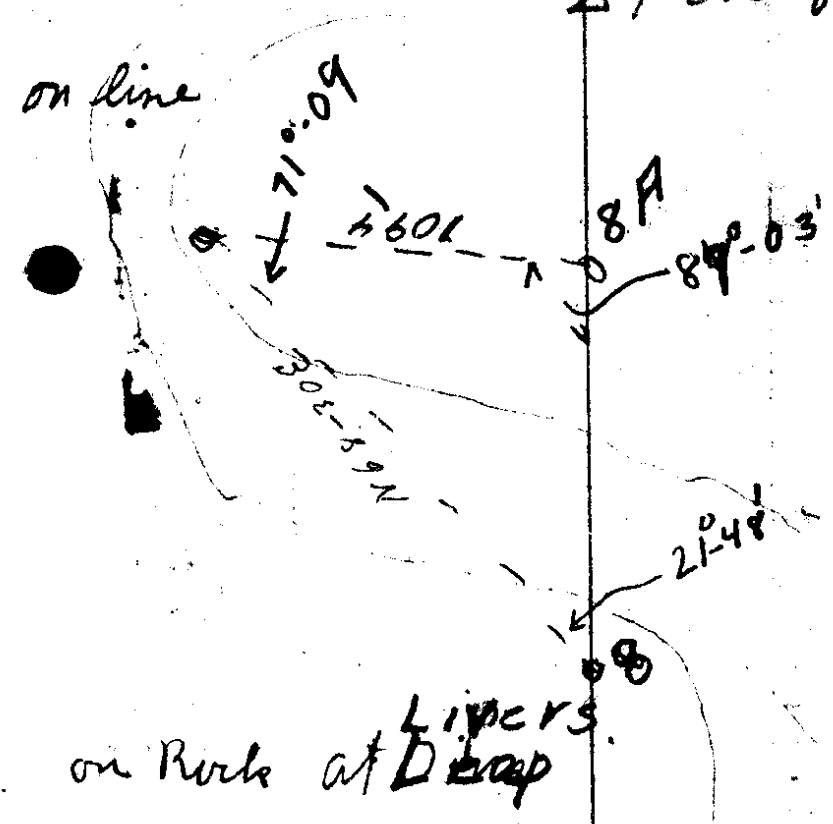
90

North

Δ

776
1241
517

Turned 87-13 right
5.6 feet to station
A9 on other line



7

Δ 7
101 25°
26

91.5

69.95

43.2 cut at true line

38.2 East Δ 7

Δ 5

94 33°-30'

78.3

70

offset 32.5 cut on Δ 6

37.5

cut at true line on Δ 5

Δ 4

201.2

87.3

32.7 cut

Δ 3

115 27

97.0

27.3 cut

Δ 2

26.3 17

85.0

21.5 cut

Δ 1

273

260.4

16.1 cut

83-10

Δ 1

157.5 7-30

156.2

Cor. SW

87-13'

Δ 17

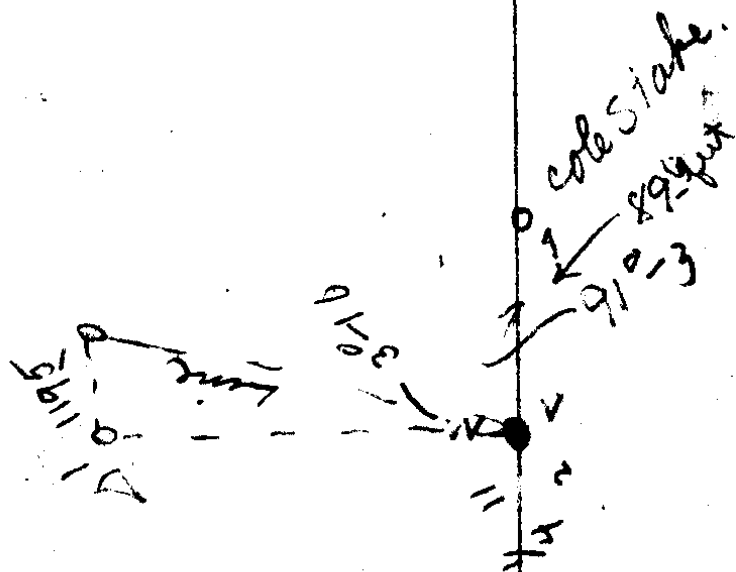
59.8

10

East

Δ 16

56.2



N 5°-30 W

Δ 9

Δ 8

Δ 7

1747.5

50

90

Total 2447.0

90

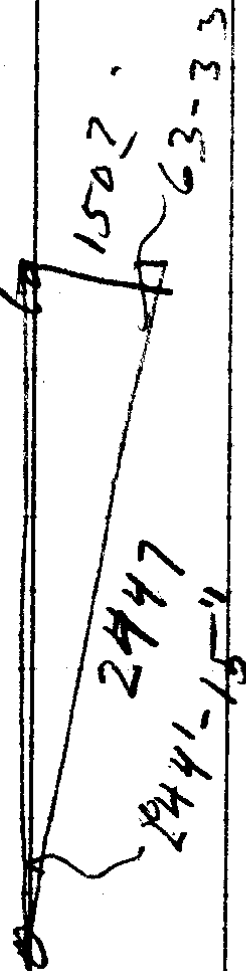
9

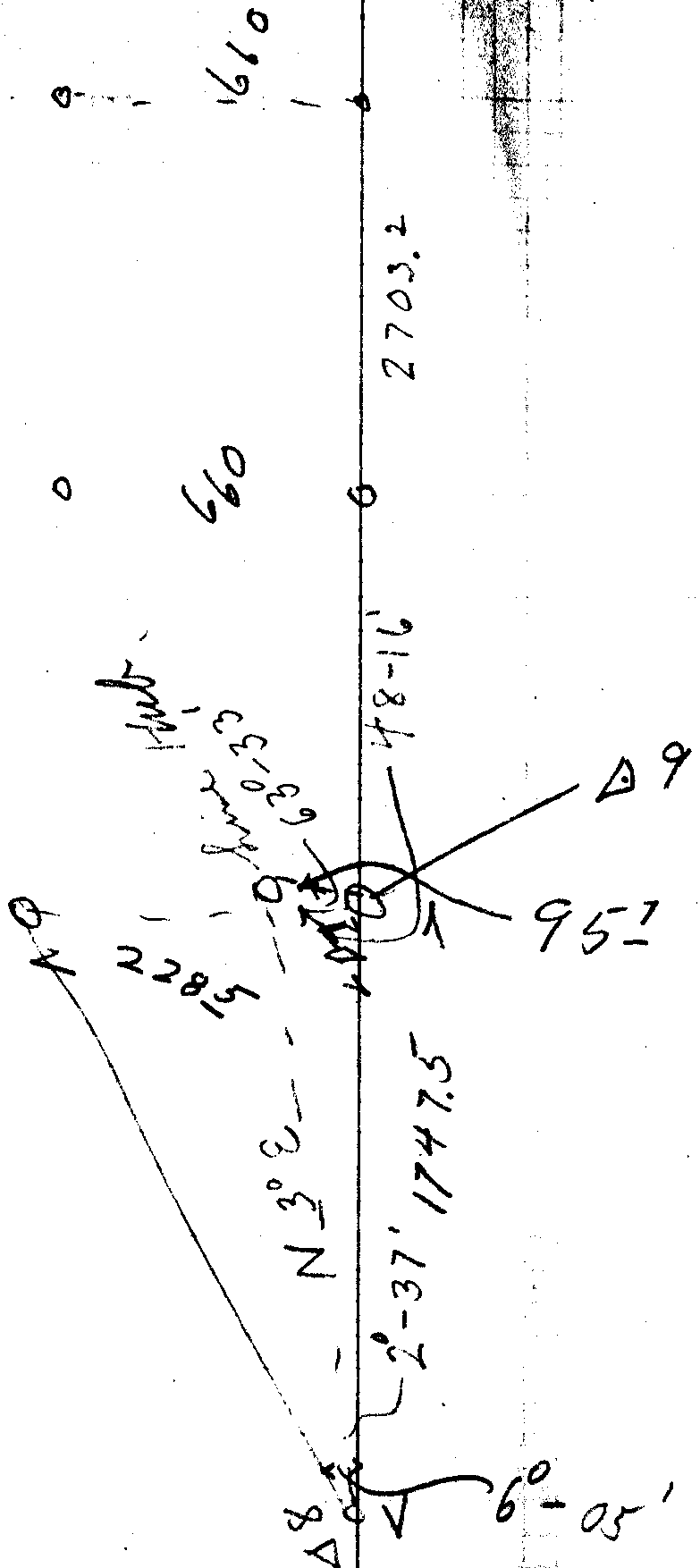
11.8 feet wide 8

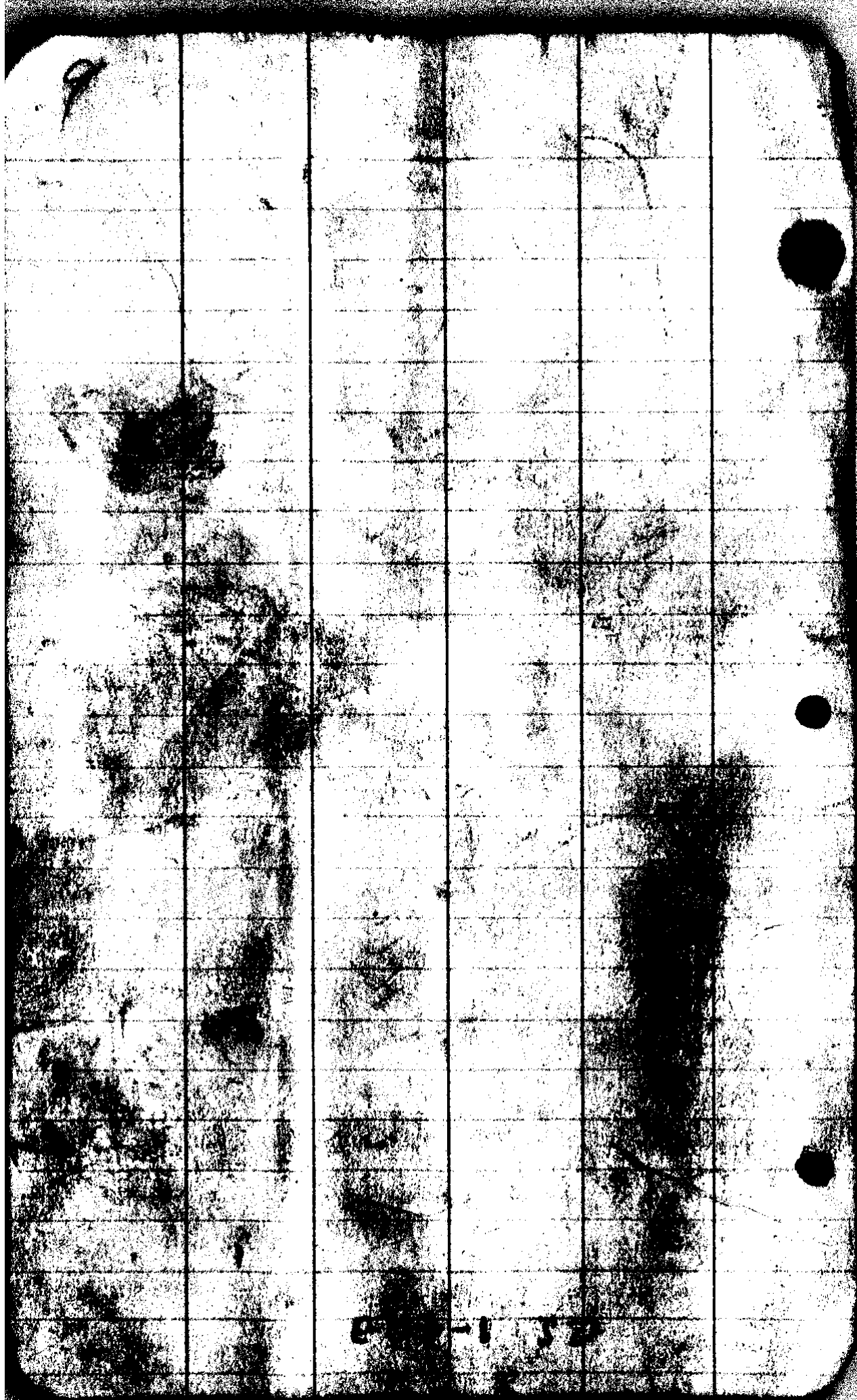
38.2 East 87

259.60
246.33
13.27

113° 43' - 45"







21-1-3

CS FILE FOLDER

CONTAINS

MORE

INFORMATION