

① 24-5

Legal survey For T.I. Medley  
Jan. 16-1922. G.G. Stewart. P.C.

I start at Sec. Cor To 25-36-30-31

Find 2 orig. B.Ts T 24-4.w.

Set squared W.O. Post, Marked new B.T

25 12" W.O N 59° W 39<sup>8</sup> feet

30 12" W.O N 32° E 58<sup>5</sup>

36 14" S 79° W 32<sup>0</sup>

31 16" S 25° E 60<sup>8</sup>

Cor Var 21° 15' W

14°

138<sup>0</sup>

West

~~451<sup>4</sup>~~

2 0 0 451<sup>2</sup>

3 0 0 1261<sup>2</sup>

4 0 0 199<sup>9</sup>

5 0 0 278<sup>2</sup>

6A 0 <sup>approx</sup> 3° 300<sup>2</sup>

~~7~~ 1230<sup>9</sup>

8 316<sup>6</sup>

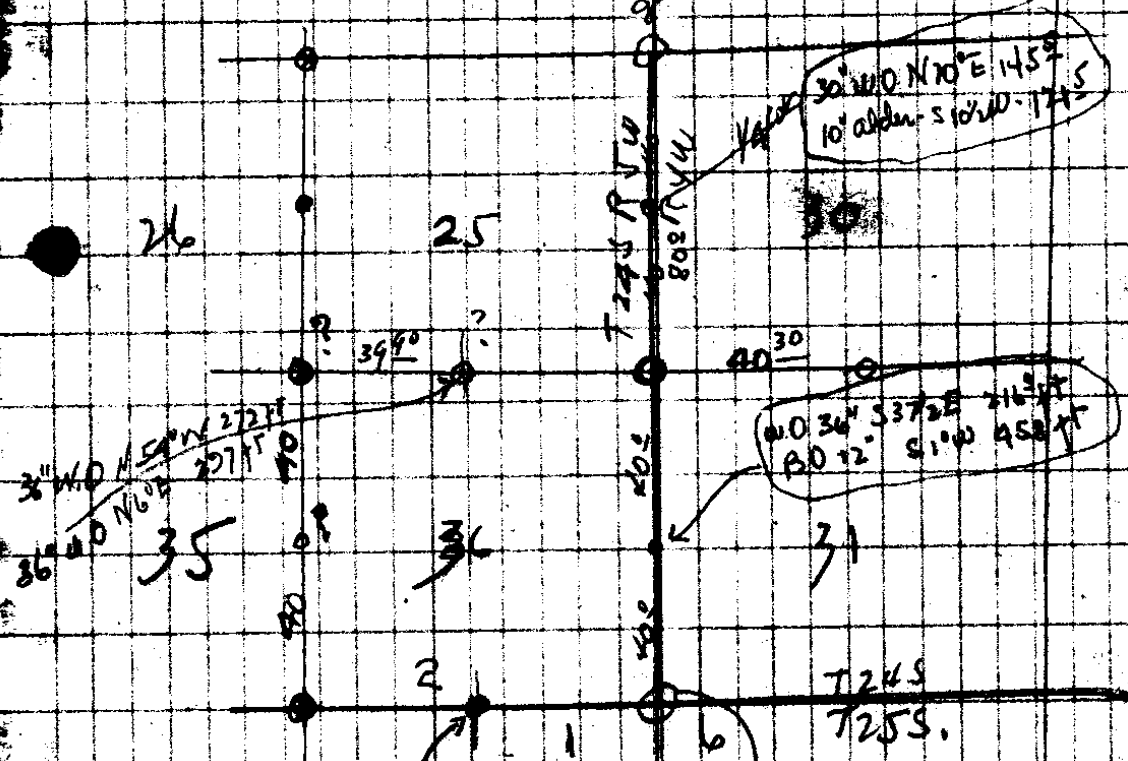
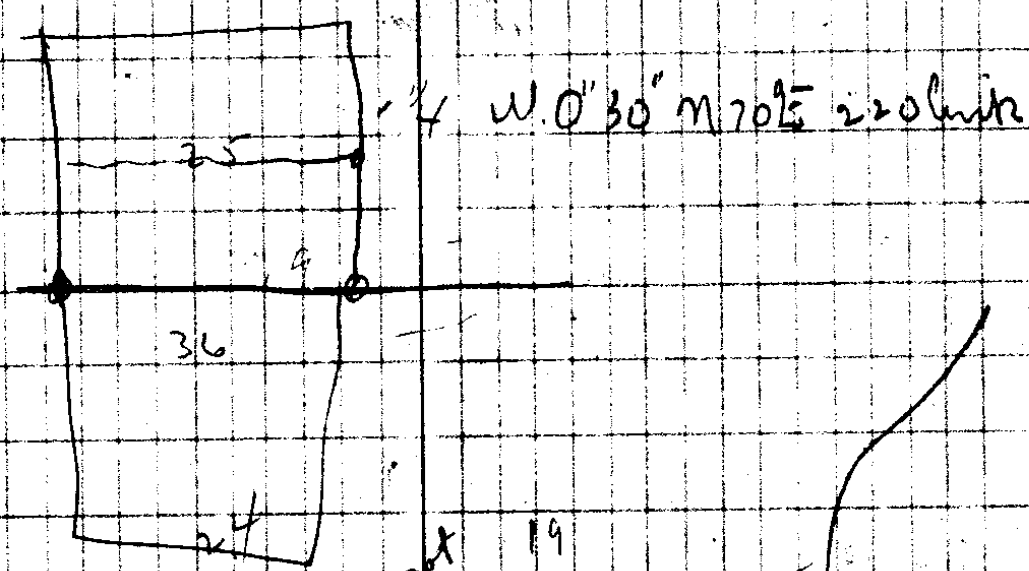
9 1147<sup>1</sup> 5020<sup>2</sup>

10 259<sup>3</sup>

Total 5280<sup>9</sup>

witnesses  
A. Th...  
T. I. Medley  
J. W. Medley  
R. H. Clark

Cannot find sec. cor 25-26-35-36. Trees  
down. Go 1/2 mile South to 1/4 cor and  
find B.Ts which do not agree with



3" W. 0° N 50° W 272 FT  
 36" W. 0° N 60° W 271 FT

W. 0° 0' 722 90 82 FT  
 S. 0° 09' S 60° W 11 1/2

T24S  
 T25S.  
 12" Level N 7° W 208. FT  
 20" " N 41° E 132  
 10" " B. 0° S 62° E 252  
 12" " B. 0° S 22 1/2° W 82.5

Sec. for. set in Presence of  
R.P. Clark - T.J. Medley.

1339

13 y. Brush fence

edge clear - alfalfa

Edge Creek East

309 1-24  
②  
25-26-35-36

Thorn 6" N34°E 23' <sup>ft</sup>

alder 40" N58½°W 47' <sup>ft</sup>

Willow 4" S10°E 16' <sup>ft</sup>

" 5" S80°W 18' <sup>ft</sup>

25-36 ¼ 39' <sup>ft</sup>

awo. 36" N54°W 37' <sup>ft</sup>

" " 36° N6°E 29' <sup>ft</sup>

as for

③

T. J. Medley - Cont

Gov't Field Notes by about 33 ft.

R.R. Clark will not accept 1/4 cor as set from these trees so I go to sec. Cor common to 35-36-1-2

Find 2 orig. B.T.

Set 4" sq. tin post Marked.

Blaze New B.Ts

2	18" Fir	S 62° W	62 <sup>5</sup> ft
58	18" Fir	S 57° E	73 <sup>0</sup>
35	B.O. orig	N.W	79 <sup>2</sup>
1	8" Fir	N 67° E	37 <sup>0</sup>

Set in presence of A. Thiele

T. J. Medley, R.R. Clark, Roy Medley.

Cor		Var. 20° 15' E			
		10°	272°	N	North
1	4° 25' L	0	38 <sup>8</sup>	N 4° W	N 4° 25' W
2	5° 56' R	10°	228 <sup>9</sup>	N 1° 30' L	N 1° 31' E
3	2° 32' R	11°	289 <sup>8</sup>	N 4° 10' E	N 4° 03' E

1-23  
4

268°

38<sup>8</sup>

225<sup>4</sup>

284<sup>6</sup>

CS 4/24

4	50	30	110 <sup>1</sup>	N4°10'E	N4°03'E
5	22°17'L	16°	1119	N17°30'W	N18°14'W
6	4°21'R	15°	2636	N13°50'W	N13°53'W
7	13°39'R	12°	2998	N0°10'E	N0°14'W
8	0°34'L	0	1029 <sup>2</sup>	N30'W	N0°48'W
9	0		1951 <sup>2</sup>		N0°48'W
10	80°04'R	—	2996		N79°16'E
11	set 12 Bs # 11				N6°11'E
	run to #9 first line E-W				
	59°36'L	0	1004		N53°25'W
	set 12 Bs # 11				N6°11'E
	18°11'L	—	825 <sup>1</sup>	N12°W	N62°W
13	—		506 <sup>2</sup>	N11°40'W	N12°0'W
14					

Set Temp'N cor. bet 35-36  
proportioning error of B.Ts.

$$\frac{4(5'29'')^2}{1324.3}$$

1/4 Bet 35-36

Set Cedar Post, Piled Rocks around it

A 12" B.O N 85°W 147° ft

T.J. Melley, R.R. Clark

Witness

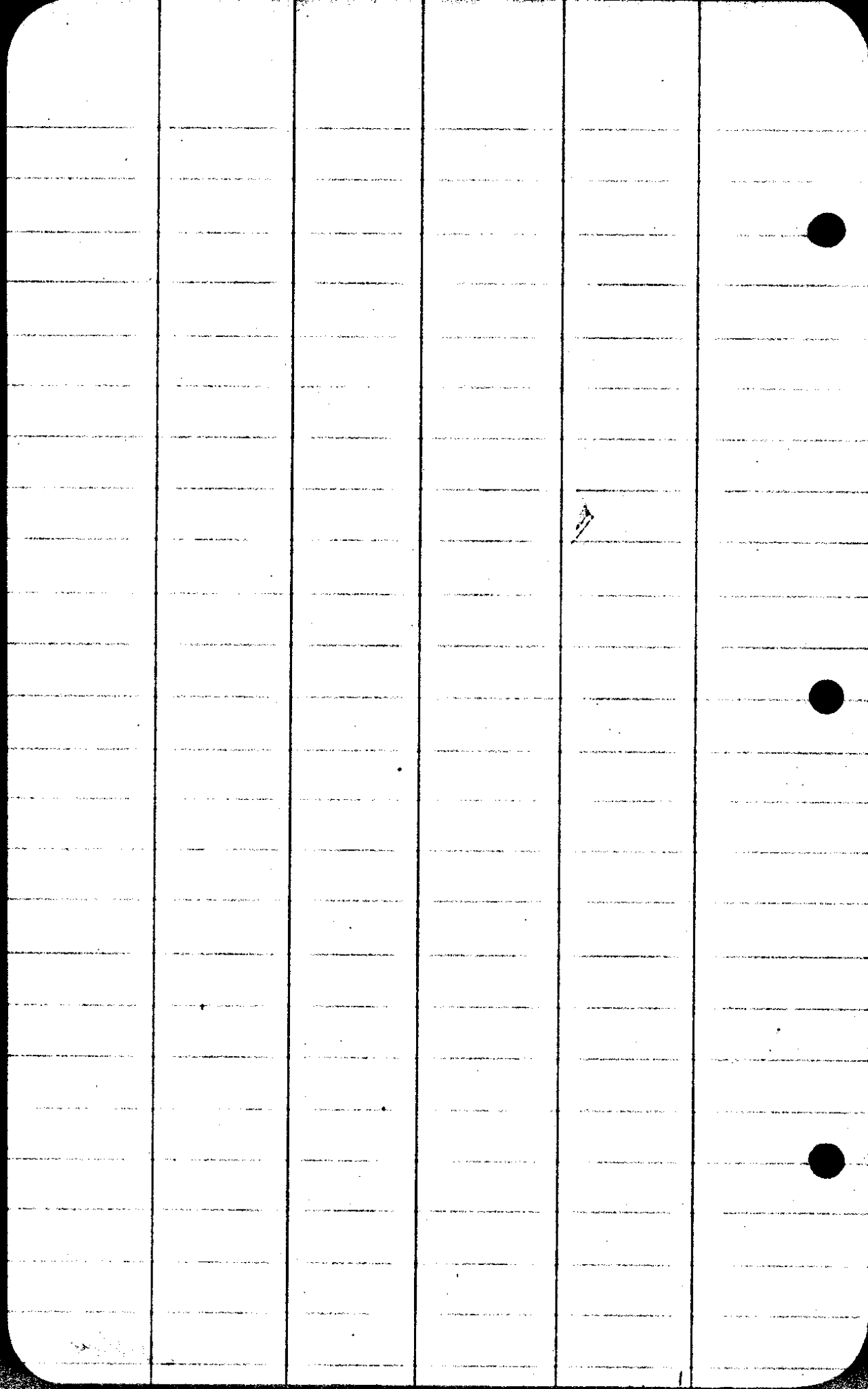
From cor. as set Iron compass line

Var 20°30', 1324 ft East. Set

W.O. Post. A 24" Fir

S 81°W 8<sup>2</sup> ft

CS 1/24





14					N 12° 0' W
	0° 48' L		158'	N 12° 15' W	N 12° 48' W
15					
	8° 35' R	-	372'	N 3° 50' W	N 5° 13' W
16					
	3° 01' R	-	376'	N 1° W	N 2° 12' W
17					
	40° 10' L	9°	102'	N 41 1/2' W	N 42° 22' W
18					
	38° 18' R	-	264'	N 3° W	N 4° 04' W
19					
	13° 55' L		188'	N 16° 35' W	N 17° 59' W
1/4 Cor bet 25 26					

Find 1/4 B. Ts. Oak & Ash.  
 Set squared Chitem Post. for Cor.  
 Set in presence of R.R. Clark  
 T. J. Medley - A. Thiel.

Piled Mound Rocks around stik  
 cor cont East.

	106° 20' R	22°	88'	East	
1		-	63'	"	
			101 1/2'		
			150'		

#9

N0°48'W

1/4 cor

31°52R

68<sup>2</sup>

N31°E

N31°04'E

E + W line intersects Secd cor

26-25

11<sup>6</sup> ft So of cor.

35-36

\$89°53'W 5297<sup>2</sup> = length to East cor

Drove 1/8" I Pipe

30" Maple N48°E 68<sup>3</sup> ft

30" Maple S62<sup>1</sup>/<sub>2</sub>°W 39<sup>5</sup>

24" Ash. S64<sup>1</sup>/<sub>2</sub>°E 99<sup>4</sup>

30" " N17<sup>1</sup>/<sub>2</sub>°W 136°

T.J. Medley R.R. Clark, Roy

Medley witnesses

set 1/6 cor Iron Buggy Axle in ground

4" W.O.

N63°W

24<sup>6</sup> ft

$$\begin{array}{r}
 888 \\
 927 \\
 \hline
 6216 \\
 1776 \\
 7992 \\
 \hline
 8231.76
 \end{array}$$

$$\begin{array}{r}
 144 \\
 66 \\
 \hline
 864 \\
 864 \\
 \hline
 950.4 \\
 65 \\
 66 \\
 \hline
 390 \\
 390 \\
 \hline
 2290
 \end{array}$$

Top hill

101<sup>7</sup>

$$\begin{array}{r}
 145.5 \\
 1019.2 \\
 \hline
 1264.7
 \end{array}$$

$$\begin{array}{r}
 1320.6 \\
 46 \\
 \hline
 1315.4 \\
 1247 \\
 \hline
 150.7
 \end{array}$$

S 52° E 144  
 apl 7165 W 65

959  
 429

1/4 - 35-36  
 S 85<sup>3/4</sup>° E 119 ft. S 75° W 136 ft.

18' offset N

$$\begin{array}{r}
 823 \\
 632 \\
 11699 \\
 \hline
 1315.4
 \end{array}$$

CS 164

1-24

Set out # 7 hub Move North  $44^{\frac{8}{2}}$   
East  $41^{\frac{9}{2}}$

for 40 cor  
put in stik

A 18" Fir S  $60^{\circ}$  E  $14^{\circ}$   
T hence West Var  $20^{\circ}$

Set Cor  $\frac{1}{2}$   $\frac{35}{2}$

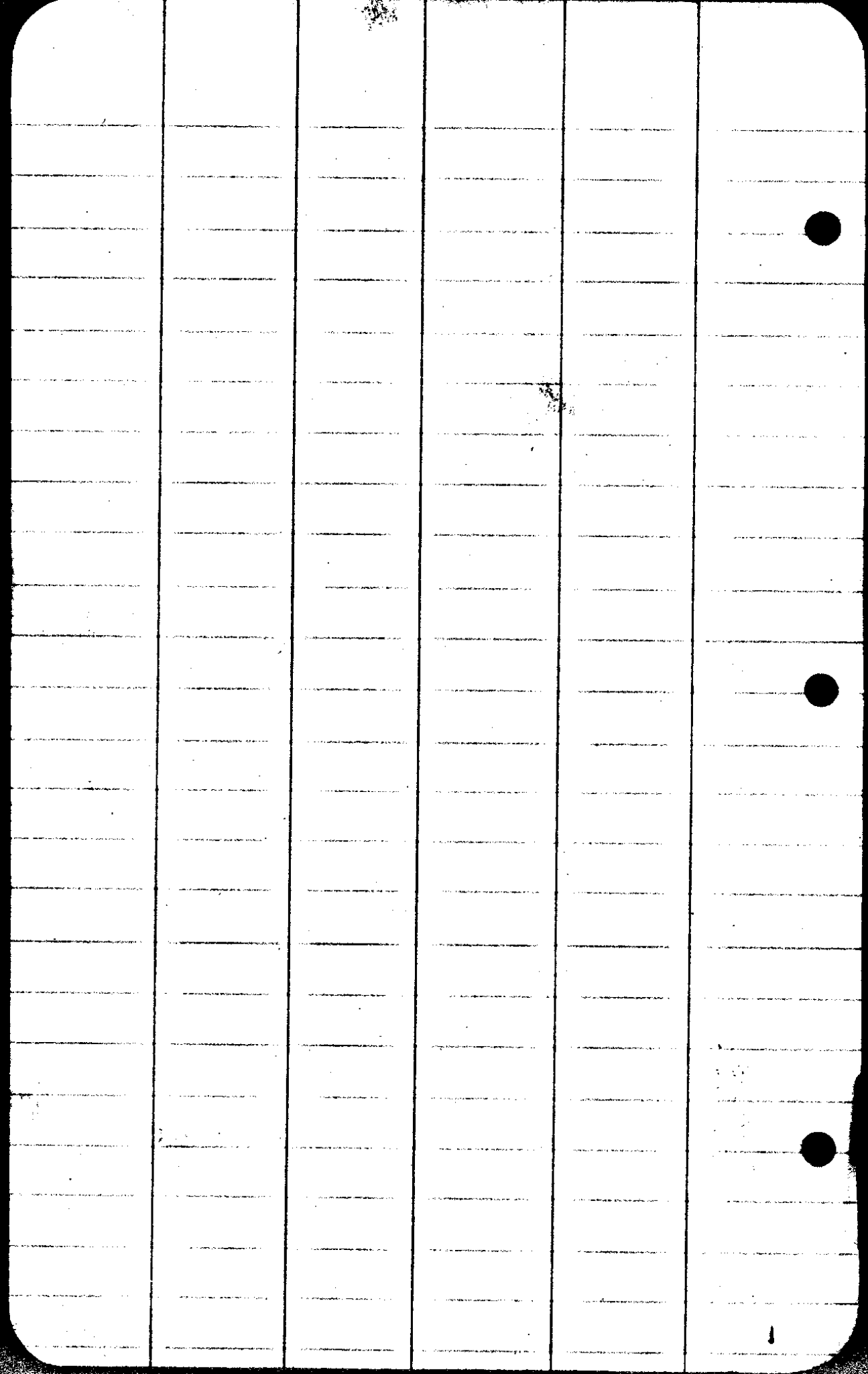
Found 0 B.Ts 1 Badly decayed

Set Steel Auto Spring

Marked 14" W.O N  $88^{\circ}$  E  $26^{\frac{7}{2}}$  ft

10" B.O S  $28^{\circ}$  E  $44^{\frac{8}{2}}$

05/24



CS FILE FOLDER

CONTAINS

MORE

INFORMATION