

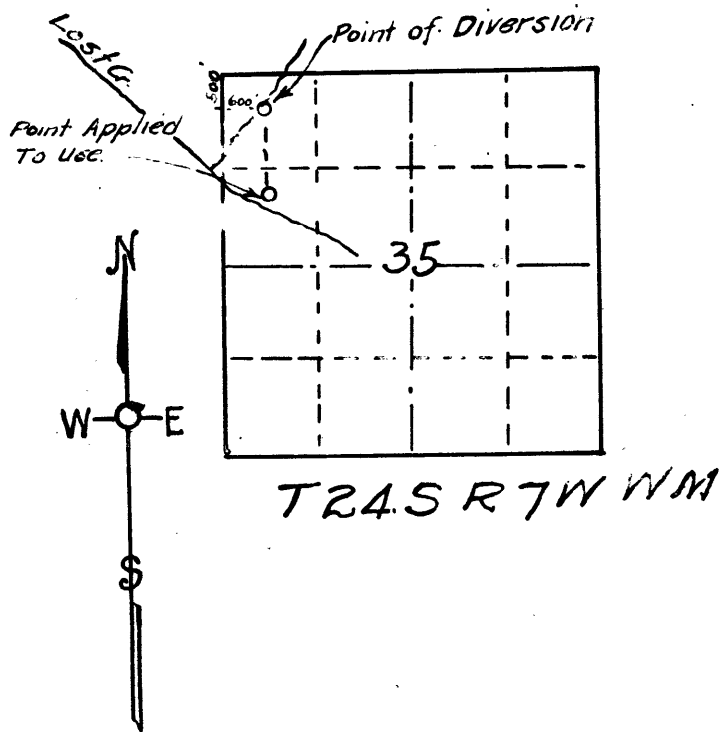
MAP OF  
 DIVERSION POINT  
 of  
 WATER APPLIED FOR  
 By JACK SABONJIAN

Scale 1 inch to 40 ch's

Surveyors Certificate

I. J. W. Cole, of Roseburg Ore, do hereby certify that this map was made from notes taken during an actual Survey made Jan 18 1924, and that it correctly represents the works described in the accompanying application, together with the location of the streams in the immediate vicinity.

J. W. Cole  
 County Surveyor.



CS 1/22-3