

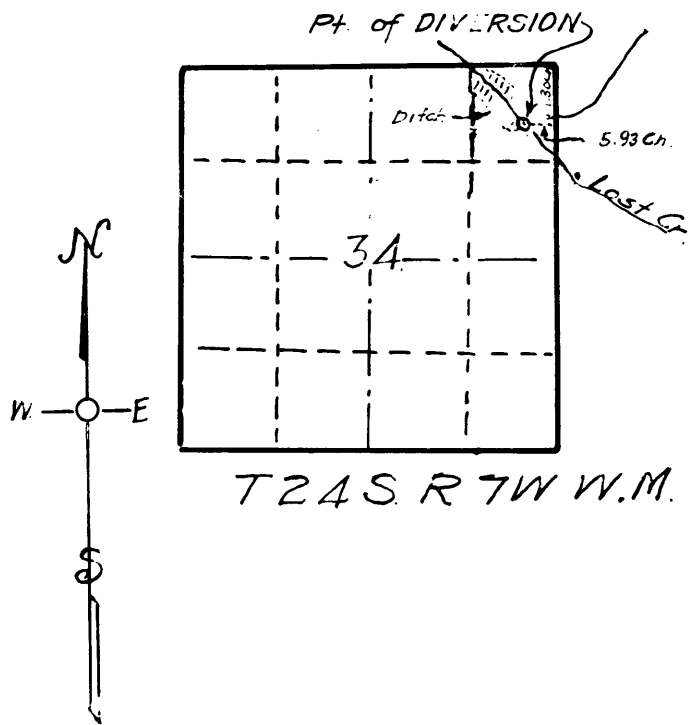
MAP OF
 DIVERSION POINT
 of
 WATER APPLIED FOR
 By *Barbara E Harris*

Scale 1 in to 40 Ch's.

Surveyors Certificate

I, J. W. Cole of Roseburg Ore. do hereby certify that this map was made from notes taken during an actual Survey made Jan. 18 1924, and that it correctly represents the works described in the accompanying application, together with the location of the streams in the immediate vicinity.

J. W. Cole



CS 1/22-1