

**Explanation**

All distances reckoned unless followed by the letters F

Except as otherwise shown on the map - distant corners marked with stones

At the intersection of the east side of street with the north boundary of

the Goodell division with the north boundary of Drain town and

of the course of lots 20 + 21 = Lots numbered south layer

Lyzins near center

Lots (Except as otherwise shown on the map parallel ( ? ) fronting

50 feet on the street

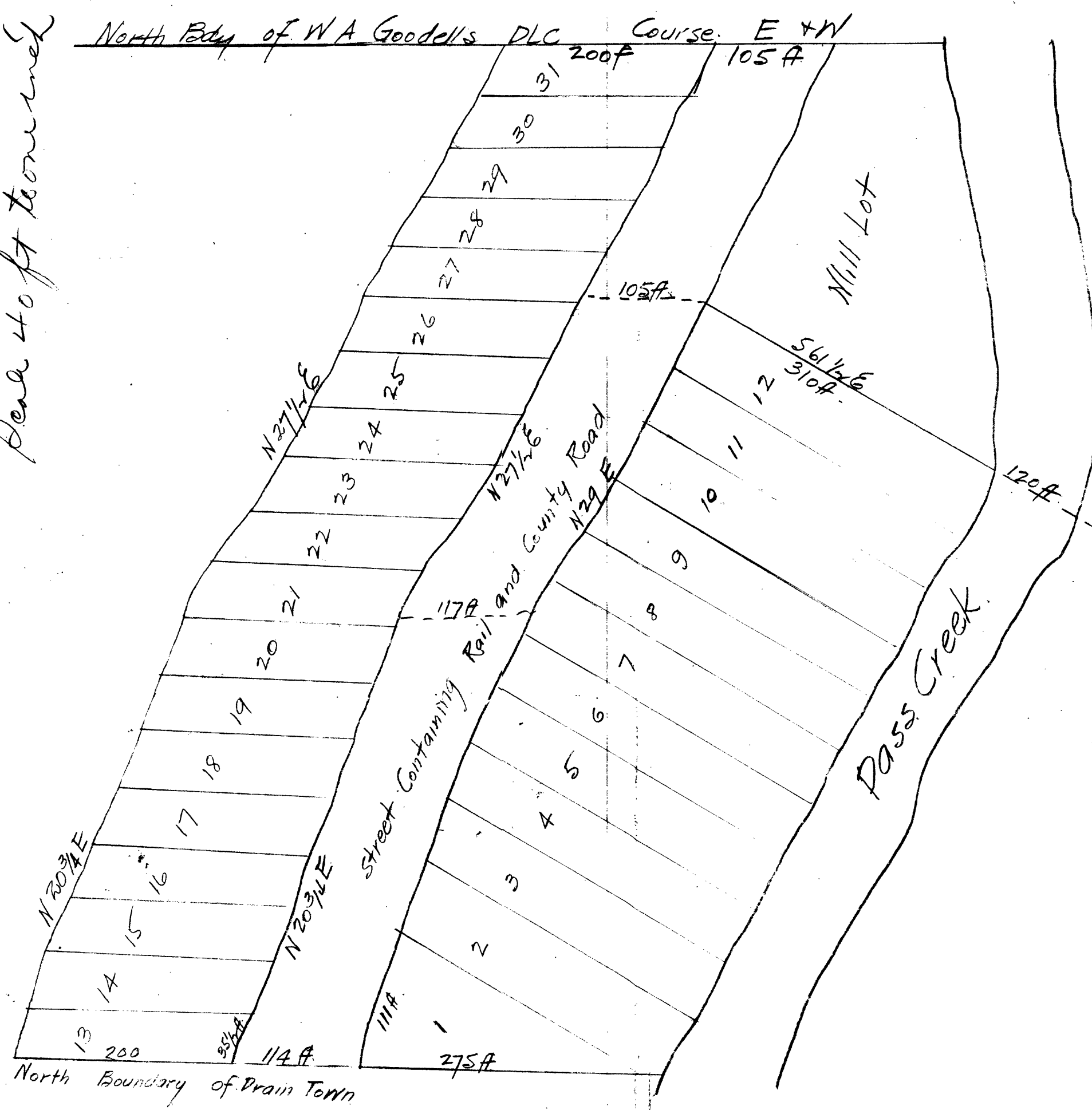
Those east of the street parallel to the south boundary of

the mill lot and running back to Pass Cr.

Those west of the street running back 200 ft.

Parallel to the north boundary of the Goodell division

Perch 40 ft to corner



435 West of M6 Cor of  
685 South Goodell Claim

Dec Vol 10 P 181 Dead Record for Field Notes