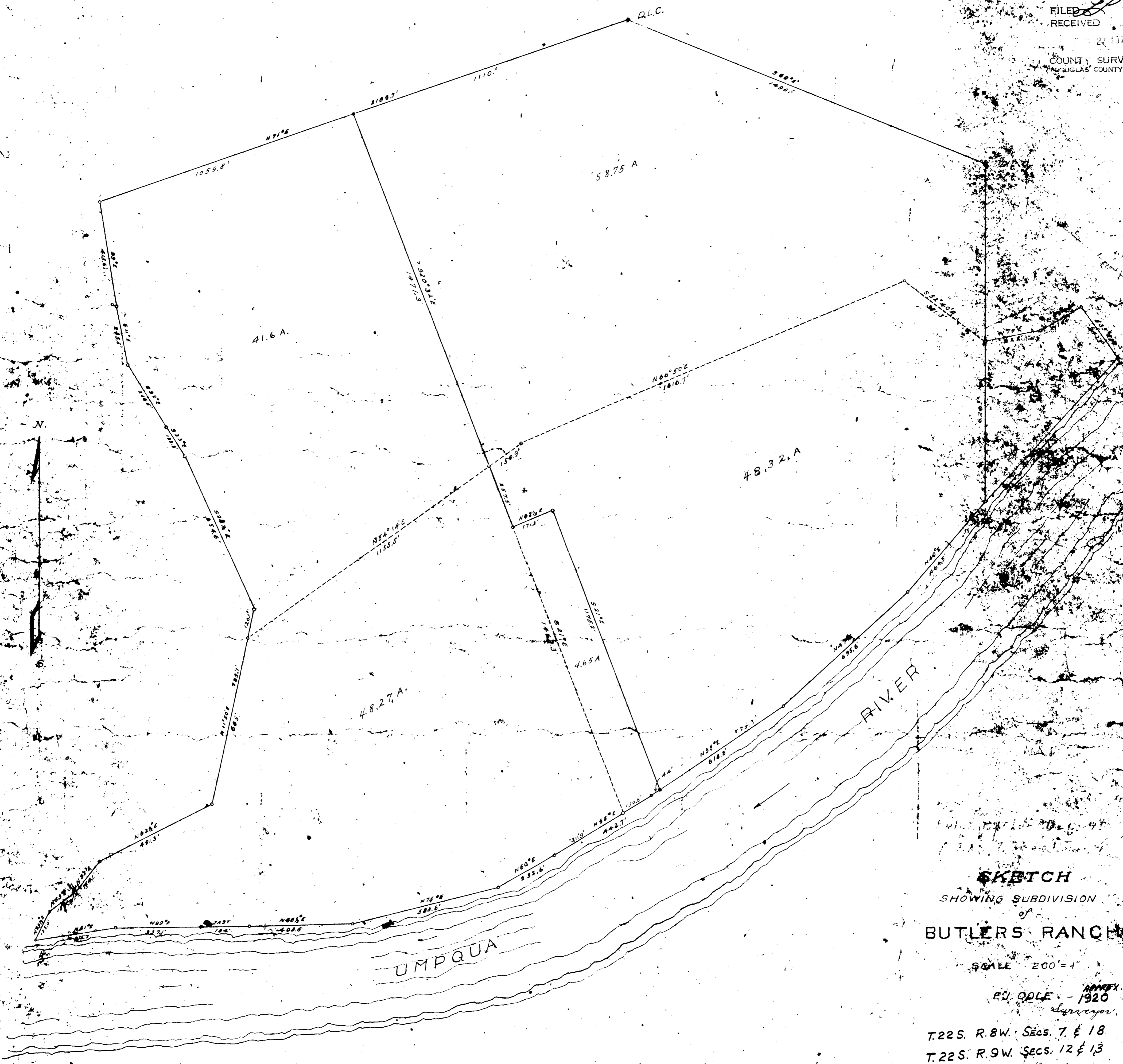


FILED
RECEIVED

27 1977

COUNTY SURVEYOR
DOUGLAS COUNTY, ORE



SKETCH
SHOWING SUBDIVISION
of
BUTLERS RANCH

SCALE 200' = 1"

PA. ODLE - 1920
Surveyor

T.22S. R.8W. SECS. 7 & 18
T.22S. R.9W. SECS. 12 & 13

T.22S. R.8W. SECS. 7 & 18
T.22S. R.9W. SECS. 12 & 13