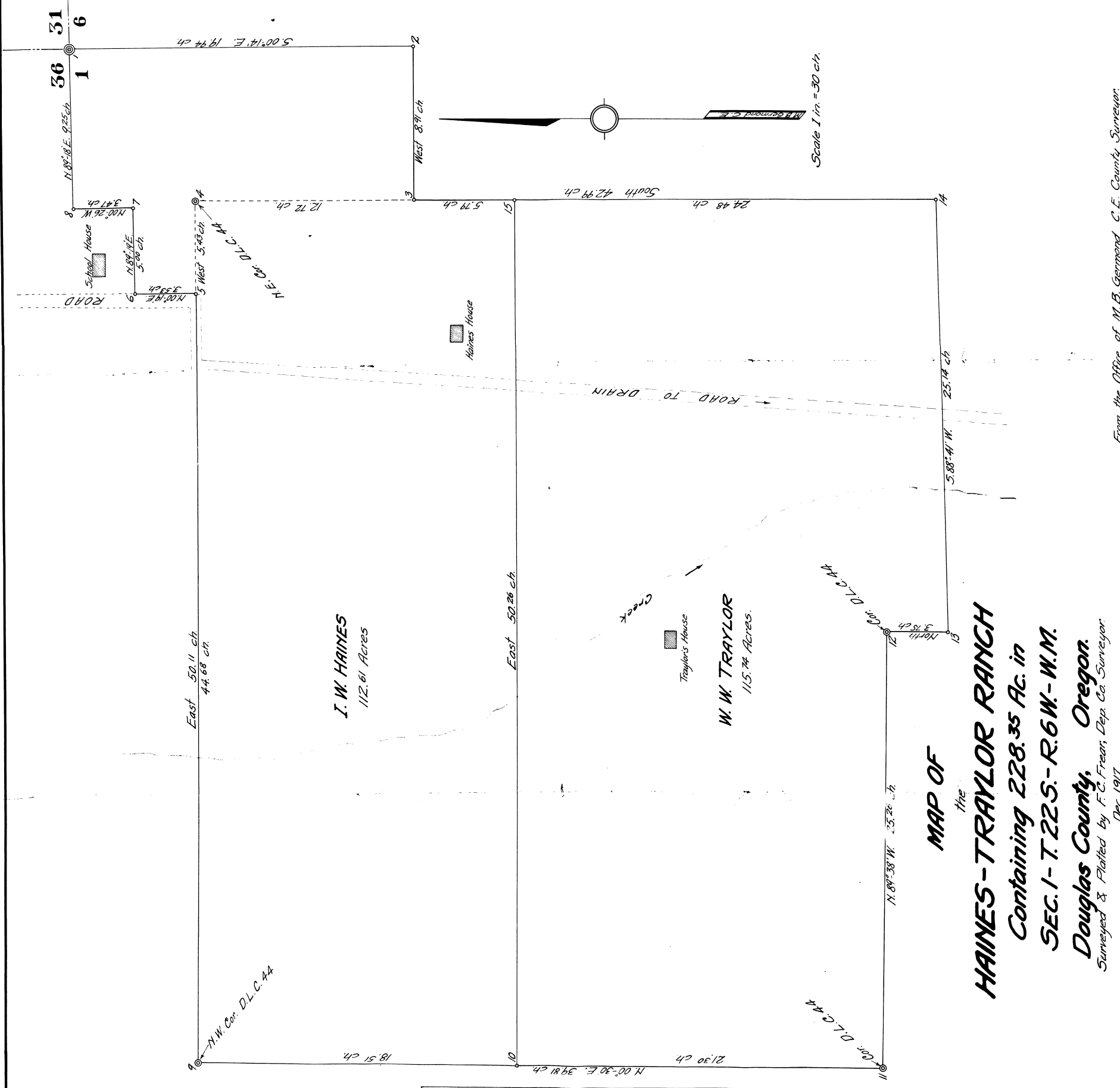
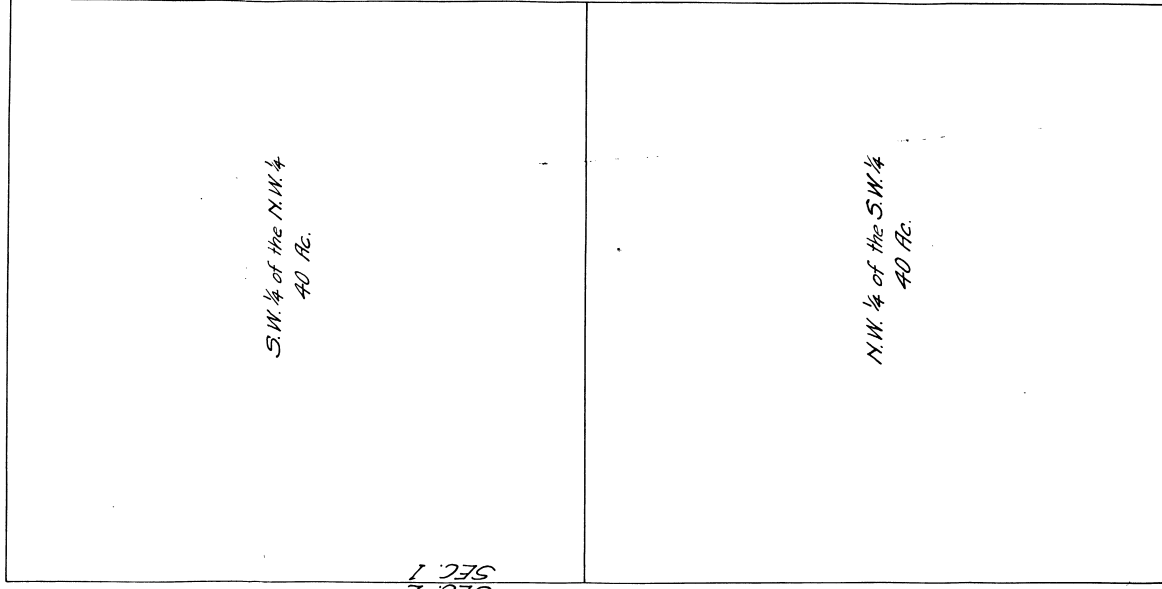


Cont.	Description	Bearing	Trees	Remarks
1	1 1/2 x 30" Iron Pipe TP Cor	N 89° 18' E 9.25 ch	18" Fir Beams N 15° W 2.10 ch 20" W. " " S 78° E 1.45 ch	New Witness Tree Marks plain on old Tree Found old Stake here marked 1/8".
2	5 x 12 x 18 Sandstone	N 89° 18' E 5.00 ch		
3	5 x 10 x 16 "	N 89° 18' E 5.00 ch		
4	8 x 10 x 14 "	N 89° 18' E 5.00 ch	24" Oak Beams N 10° W 2.25 ch 12" " " N 12° W 1.61 "	24" Marks Possible Tree shown Marks plain on old Tree New Witness Tree
5	1/2 x 30" Iron Bolt & Sandstone	N 89° 18' E 5.00 ch	8" Apple Tree S 67° W 3.26 "	
6	12" Fence Post	N 89° 18' E 5.00 ch		On F.J. Cole's Survey
7	12" Fence Post	N 89° 18' E 5.00 ch		On F.J. Cole's Survey
8	1/2 x 30" Iron Bolt	N 89° 18' E 5.00 ch		Found stake set by F.J. Cole
9	1 x 30" Iron Pipe	N 89° 18' E 5.00 ch	36" Fir Beams S 48° E 0.39 ch 36" " " S 48° E 0.39 ch 24" Oak " " S 77° W 0.54 "	New Witness Tree Marks plain on old Tree "
10	3 1/2 x 16" C.I. Wagon Spindle	N 89° 18' E 5.00 ch	60" Fir Beams N 25° W 0.35 ch Oak Slump " " N 40° E 1.09 "	70 Marks Possible Really Witness Tree "
11	3 x 20" Steel "	N 89° 18' E 5.00 ch	12" " " N 38° E 0.48 "	
12	8 x 12 x 12" Sandstone	N 89° 18' E 5.00 ch	24" Oak Beams N 15° W 1.68 ch 20" " " N 50° W 1.71 "	Marks plain on old Tree "
13	6 x 6 x 12 "	N 89° 18' E 5.00 ch		On Old E. & M. Fence
14	Fluohare & 3" Cedar Stake	N 89° 18' E 5.00 ch		" "
15	5 x 8 x 14" Sandstone	N 89° 18' E 5.00 ch		" "



MAP OF  
the  
**HAINES-TRAYLOR RANCH**  
Containing 228.35 Ac. in  
SEC. 1- T. 22 S. - R. 6 W. - W. M.  
Douglas County, Oregon.  
Surveyed & Platted by F. C. Frear, Dep. Co. Surveyor  
Dec. 1917

CS FILE FOLDER

CONTAINS

MORE

INFORMATION