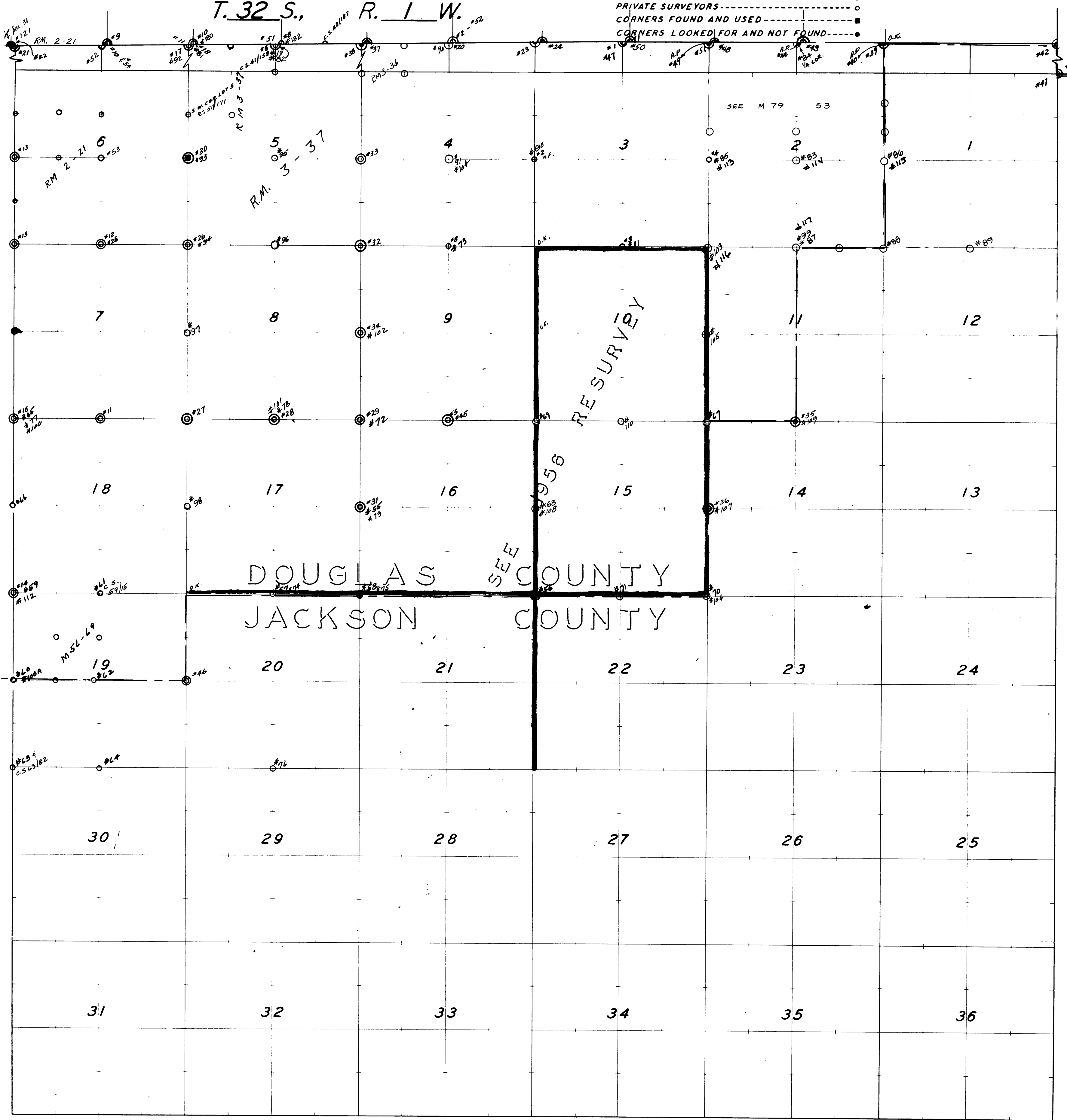


CORNERS RENEWED BY
 BUREAU OF LAND MANAGEMENT -----◆
 COUNTY SURVEYOR'S OFFICE -----○
 PRIVATE SURVEYORS -----○
 CORNERS FOUND AND USED -----■
 CORNERS LOOKED FOR AND NOT FOUND -----●

T. 32 S., R. 1 W.



DOUGLAS COUNTY
 JACKSON COUNTY

RESURVEY