

Douglas County Surveyor's Record of
Government Corners Renewed

T. 31 S. T. S. R. 9 W. R.W.W.M.

KOKE-CHAPMAN CO., EUGENE, ORE. 21091

152

John M. Powell
W. Penley and J. Heritage
C.S. File No 53/53

Section Corner to Secs. 4 & 3, T31-9W. and
Secs. 33 & 34, T30-9W.
Found - 14", now 38" D. Fir, N. 63 3/4° E. 22.5 ft. (Rec. 25.1), shows good scar.
7", now 26" D. Fir, N. 31 1/2° E. 38.9 ft., shows good scar.
6", now 14" D. Fir, N. 84 1/2° W. 16.7 ft., opened for scribe "W".
20" Cedar, now snag, S. 32° W. 19.4 ft. (Rec. S45W 16.5),
burnt face on tree, also "X".
Set - Brass Cap at Cor. Mkd: County Surveyor's T30S
Office, 1970 T31S R9W S 33 | S 34
S 4 | S 3
New BT: 15" D. Fir S. 60 1/2° W. 32.5 ft. mkd: "T31S R9W S 4 CS BT".
Other Bearing Trees O.K.
This corner lies in bottom of north - south draw.

8/11/70

153

John M. Powell
W. Penley
C. S. File No. 54/32

1/4 Corner to Sec. 3, T31-9W. and Sec. 34, T30-9W.
Found - No trace of stone at 1/4 corner.
30", now 50" D. Fir, S. 72° E. 17.8 ft., opnd. for scribe "1" "S".
17", now 28" D. Fir, N. 44 1/2° W. 7.6 ft., opnd. for scribe, found
burnt face, part os scribe and old axe work.
Good call & distance to creek. 72.0 ft. E., hits pretty good.
Old camp nearby probably fire place.
Set - Brass Cap at Cor. Mkd: County Surveyor's T30S
Office, 1970 T31S R9W 1/4 S 34
S 3
New BT: 26" W. Fir N. 9 1/2° W. 34.2 ft. mkd: "1/4 S34 CS BT".

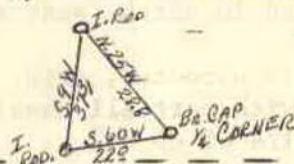
8/11/70

154

Ronald A. Brandt
For: Robert Dollar Co.
July, 1971
C.S. File No. 55/191

1/4 Corner to Sections 9 and 16.
Found - 3/4" Iron Pipe, bent over & buried in skid road, Ren.#21.
No trace of Orig. BT's., logged & burnt.
Unrecorded Scribed Stump S. 51 1/2° E. 24.6 ft. scribed "BT 1/4".
Set - Brass Cap alongside I.P. Mkd: County Surveyor's T 31 S R 9 W
Office S 9
1970 S 16
New Bearing Objects: 5/8" I. Rod at base of 22" F. Stump N. 25° W. 28.8 ft.
5/8" I. Rod at Base of 40" F. Stump S. 60° W. 22.0 ft.

8/21/70



MARCH 11

155

JAN. 1972

Oregon State Dept. of
Forestry
Arnold Gibson
Charles W. Cook
July 20, 1972
C.S. File 55/233

1/4 Corner for Sections 11 and 12. FO. OK BY K. DeGroot 6/01 M 137-13
Purpose: - to reestablish the obliterated 1/4 corner and establish
line between those sections. The 1/4 corner was monumented
and the S 1/2 of the section line brushed out & blazed.
Set - 1" x 36" Iron Rod, driven flush, from which bears -
8.8" D.F. N. 83° 58' W. 19.54 ft. mkd: "1/4 S11, O.E. 6803, B. T.
7.2" D.F. S. 26° 46' E. 29.54 ft. mkd: "1/4 S12, P.E. 6803, B.T.
Corner set by proportionate measurement. 1/4 Car. Post set in 1958 Staff
Compass Survey by The Robert Dollar Co. is N. 8° W., 2 ft. from the
Iron Rod set in this survey.

July 6 - 12, 1971

156

JAN. 1973

Township corner common to Section 31, T31-9 & Sec. 36, T. 31-10
Original 14" x 8" x 5" Basalt Stone (now in place, no marks
visible) from which a:
5" Laurel, bears N. 50° E., 48 lks.; clump of 4 in place, no marks visible.
5" Fir, bears N. 70° W., 180 lks.; now 22" in place, exposed scribe B.
Set - 4" x 4" x 72" white painted cedar post 2.0 ft. S. 67° E., of corner
stone from which a:
13" Fir, bears East 21.5 ft. to face; scribed T31S R9W S31 BT RS359.
18" Fir, bears N. 40 1/2° W., 56.7 ft. to face; scribed T31S R10W S36 BT.
Oregon State Forestry Department metal location poster on 13" Fir BT
East 21.5 ft.

7/20/72