

Douglas County Surveyor's Record of
Government Corners Renewed

T. 30 S. T. S. R. 6 W. R.W.W.M.

KOKE-CHAPMAN CO., EUGENE, ORE. 21881

Bruce R. Rogers, Deputy
For. C. & D. Lumber Co. & Wm. Phillips.
March 1965
C. S. File No. 53/117
M 22 - 65

$\frac{1}{4}$ Corner to Sections 1 and 12. 186
Set by proration.
Set - Brass Cap in mound of rocks mkd:
County Surveyor's T30S R6W $\frac{1}{4}$ S $\frac{1}{12}$
Office, 1965
New BT's: 14" Pine bears N.33°E. 148.0 ft. Mkd: $\frac{1}{4}$ S1 CS BT.
8" Oak bears S. 4°E. 85.5 ft. Mkd: $\frac{1}{4}$ S12 CS BT.

C. W. 1/16 Corner Section 12. 187
Bearing Trees: Set $\frac{3}{4}$ " I. Rod from which:
7" Madrone bears N.50°E. 15.3 ft. Mkd: CW 1/16 S12 CS BT.
6" Madrone bears S.29°W. 21.0 ft. Mkd: CW 1/16 S12 CS BT.

S. W. 1/16 Corner Section 12. 188
Set - $\frac{3}{4}$ " I. Rod, from which:
BT's: - 8" Oak bears S.76°E. 12.4 ft. Mkd: SW 1/16 S12 CS BT.
6" Oak bears N.32°W. 7.5 ft. Mkd: SW 1/16 S12 CS BT.

C. N. 1/16 Corner Section 12. 189
Set - $\frac{3}{4}$ " I. Rod. Corner is on steep rocky slope.
BT's: - 14" Maple bears S. 2°W. 14.2 ft. Mkd: CN 1/16 S12 CS BT.
15" Pine bears N.24°E. 36.2 ft. Mkd: CN 1/16 S12 CS BT.

$\frac{1}{4}$ Corner To Sections 12 and 13. 190
Prorated $\frac{1}{4}$ Corner.
Set $\frac{3}{4}$ " Iron Rod for Corner. (see # 25)

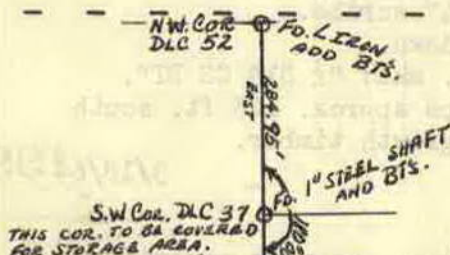
Marvin C.
Ramsey
For J.H.Baxter
C. S.
File
No. 51/316

S. E. 1/16 Section Corner btwn. Sec. 32, T30-6 and 191
Sec. 5, T31-6.
19.91 point for the E. 1/16 at proportionate distance.
Set - 1" I. Pipe 3 ft. long 28" in the ground, from which:
6" D.Fir bears N. 30° E., 17 lks. dist., mkd. E 1/16 S32 RS404 BT.
16" D.Fir bears S. 68° W. 13 lks. dist., mkd. E 1/16 S 5 RS404 BT.
July 21, 1965

John M.
Powell
J.Brady &
F. Jones
Nov.24,
1965
C. S. File
No. 53/40

$\frac{1}{4}$ Corner to Sections 19 and 20. 192
Found - 5" Pine S. 50° W. 138 lks. 91.1 ft., opened & found scribe "B".
This tree rotten snag, also had been rescribed above the
old face, scribe visible "B". This tree good for right size.
No trace of 4" Pine N. 75° E. 42.9 ft.
14" Pine S. 89° E. 52.8 ft., scribed "B" about 80 yrs. ago by
ring count. Tree faces about South. No record of this tree.
Set - Brass Cap at Cor. Mkd: County Surveyor's Office, 1965
T30S R6W $\frac{1}{4}$ S 19/S 20
New BT's: 9" Cedar N. 52° W. 10.6 ft. scribed $\frac{1}{4}$ S19 CS BT.
12" Pine S. 31° E. 15.3 ft. scribed $\frac{1}{4}$ S20 CS BT.

Wit. Cor. For S. W. Corner DLC No. 37.
(Refer to Ren. #23)



Set - Brass Cap, Wit. Cor. for SW. Cor. DLC #37,
Mkd: County Surveyor's Office, 1966
W.C. 207' West to SW Cor. DLC 37, T30S
R6W
New BT's: 7" Laurel bears S. 20° W. 34.3 ft. scribed WC SW DLC 37 CS BT.
10" Bl. Oak bears N. 36° E. 22.0 ft. scribed WC SW DLC 37 CS BT.

James W. Byron, Co. Surv.
Mike Stone &
Jack Heritage
April 7, 1966
C. S. File No. 53/117

193