

Douglas County Surveyor's Record of
Government Corners Renewed

T. 30 S. T. S. R. 6 W. R. W. W. M.

KOKE-CHAPMAN CO., EUGENE, ORE. 21881

Corner to Sections 6 and 7, only, T30-5W. 139

Found - 1" I. Bolt, 12" under surface.

20" W. Oak S. 39° W. 268.6 ft., shows good scar. #227

20" B. Oak N. 62° W. 314.5 ft., shows good scar.

16" B. Oak S. 10° E. 240.2 ft., shows good scribing.

(See Ren. Cor. No. 39 and No. 28) T30-5W

New BT: 11" B. Oak bears S. 29° E. 213.7 ft. scribed S7 T30S R5W CS BT.

Corner to Sections 1 and 12 only, T30-6W. 140

Found - 1 1/4" Axle at Cor. (See Ren. No. 19), 21" under surface.

No trace of BT found., checks bear. & dist. from

Sections 6 & 7, N. 1° W. 262.7 feet.

Set - 3/4" Iron Rod alongside Axle & 12" Under.

New BT's: 8" W. Oak bears S. 59° W. 143.6 ft. scribed S12 T30S R6W CS BT.

12" B. Oak bears N. 65° W. 106.8 ft. scribed S1 T30S R6W CS BT.

Note - Set 3/4" I. R. under field fence N. 65° W. 49.6 feet.

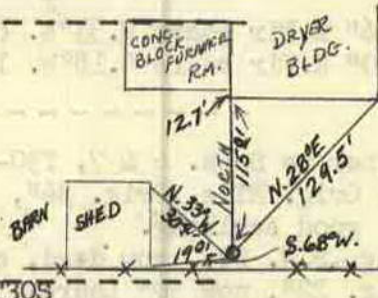
West 1/4 Section Corner to Section 7, T30-5W. 141

Found - 2" I. Pipe 24" under. Neither BT. standing

We do find roots of N. E. Bearing Tree.

Set - Brass Cap alongside I.P., set flush, & Mkd: County Surveyor's Office, 1963 W 1/4 S7 T30S R5W & R6W.

See Sketch below:



Township Corner

S36 | S31

R6W S1 | S6 R5W T31S

Found - 3/4" I. Pipe at Corner & all BT's. as recorded Cor. No. 43. #228 142

Bearing Trees to north, now stumps.

Note - Small stream is 25 feet west of corner.

New BT's: 14" Maple bears North 37.6 ft. scribed S36 T30S R6W CS BT.

6" R. Fir bears N. 70° E. 30.9 ft. scribed S31 CS BT.

1/4 Section Corner to Sec. 36, T30-6W. & Sec. 31, T30-5W. 143

Found - 3/4" I. Pipe at Corner, See Ren. Co. No. 41.

14", now 18" B. Oak N. 53° E. 54.4 ft., shows good scribing. #229

S.W. Bearing Tree, now snag, shows scribing.

New BT: 16" R. Fir bears S. 8° W. 10.4 ft. scribed 1/4 S36 CS BT.

Sec. Cor. to Secs. 30 and 31, only, T30-5W. 144

(East boundary of T30-6W)

Found - 1" I. Pipe at Corner, See Ren. No. 62, T30-5W. #223

10" Fir N. 29° E. 61.4 ft., O.K. S.E. BT., now stump.

New BT: 16" R. Fir bears S. 6° E. 24.2 ft. scribed T30S R5W S31 CS BT.

1/4 Corner to Sections 11 and 14. 145

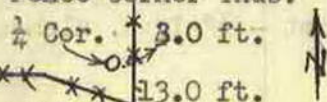
Found - 34" W.O. S. 41° W. 153.1 ft. Open & fd. good scrbing. See Cor. #6.

Set - Brass Cap at Cor. Mkd: County Surveyor's 1/4 S11 T30S R6W

Office, 1963 S14

Rescribe 34" W.O. S. 41° W. 154.1 ft. 1/4 S14 CS BT.

No trees near North of Section Line. Fence Corner Thus:



James W. Byron, Deputy County Surveyor
Mike Darby and Jim Halterman
October 1963
C. S. File No. 53/26

Dec. 1963
C. S. File 53/40

FD. 2/14/61
R. Mason
M 87-10 - (also FD.
what appears to be
AN ORIG. B.D. NW BT.)