

Douglas County Surveyor's Record of
Government Corners Renewed

T 30 T. S. R 5 R. W. W. M.

KOKE-CHAPMAN CO., EUGENE, ORE. 21891

1/4 Corner for Secs. 17 and 18
Found - 1969 BLM brass cap stamped: T30S R5W 1/4 S18 S17 1969.
An 8" White Oak, bears N.19 1/2°E., 32.2 ft. Tree scribed "1/4 S17 BT
tagged "T30S R5W S17 49 1/2 lks. S.9 1/4°W" 8-76 NC.
An 8" White Oak, bears N.20°W., 36.0 ft. Tree scribed "1/4 S18
BT" tagged T30S R5W S18 56 lks. S.20 1/2°E., 3-76 NC.
Ford Axle, loose has been disturbed.
Southwest and Southeast BT's are both snags with well healed blazes.
Note: Approx. bearing and distance from Brass Cap to axle is
S.44°E., 140 ft. See Ren. #25.

8/30/76

272

Southeast Corner D.L.C. No. 42
Found - Orig. 12" now 36" W. Oak. Tree bears N.30°W., 96.4 ft. previously
opened, center partially rotted. I open tree below chopped out
portion and find fragmentary reverse scribing "8"
[REDACTED], a 3/4" I.P. from which orig. BT bears N.27°W., 96.1 ft.
Set - 1" x 30" I.P. with brass cap attached at DLC corner stamped:
Douglas County Surveyor
T 30 S R 5 W
S.E. Cor
DLC #42
1976

L.E. Monrean
P.L. Earle
Doug. Co. Surveyors
Nov. 2, 1976
C.S. 59/26

From Which:
Orig. W. Oak bears N.30°W., 96.4 ft.
A B. Oak 50", bears S.65°E., 77.9 ft. Tree double blazed and
scribed "T30S R5W SE DLC 42 CS BT". Bearing and dist. recorded
to center of base.
3/4" I.P. bears S.56 3/4°W., 4.3 ft.

11/2/76

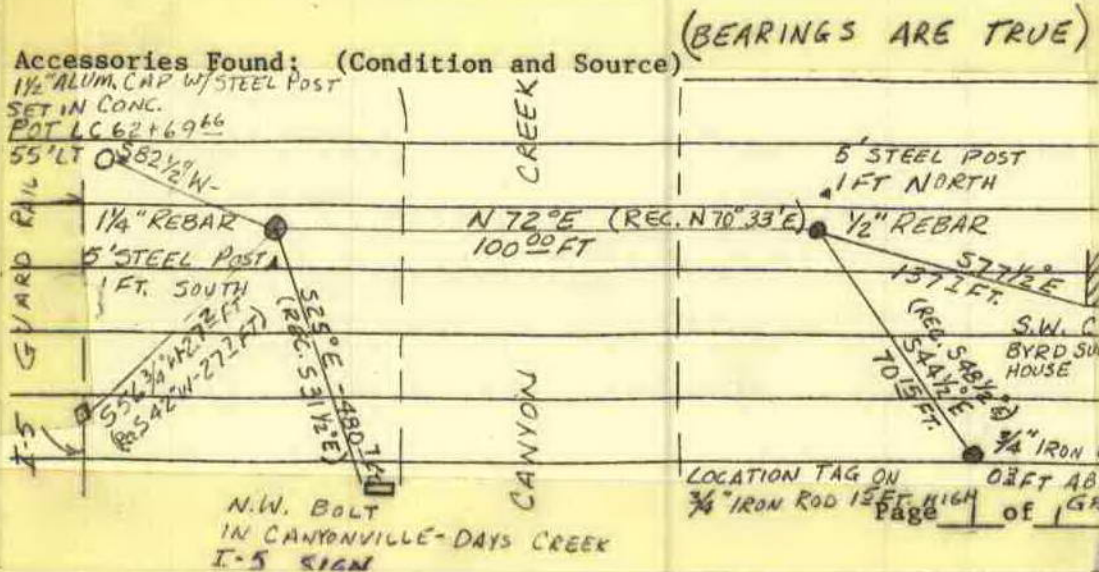
273

Northeast Corner D.L.C. No. 42
Set - 1" Iron rod by intersection in the survey of McCullough
Tracts Subdivision.
Initial Point for Subd. is S.68°14'30"E., 32.5 ft. from DLC
Corner.
Arthur R. Evans
For: J.T. McCullough
Nov. 7, 1947
Plat Book: Vol.
10 Page 49

11/7/47

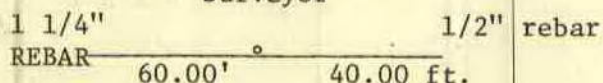
S.E. Corner for D.L.C. #59
No monument found.
Found accessories: See Ren. #240

274



R. B. Kimberling
M. W. Cline
Doug. Co. Surveyors Office
October 4, 1977
C.S. 59/40

Set - 5/8" x 30" Rebar with alum. cap stamped "Douglas County"
S.E. Cor.
DLC 59
1977
Surveyor



Corner lies in Canyon Cr. Bed.

10/4/77

JAN 78